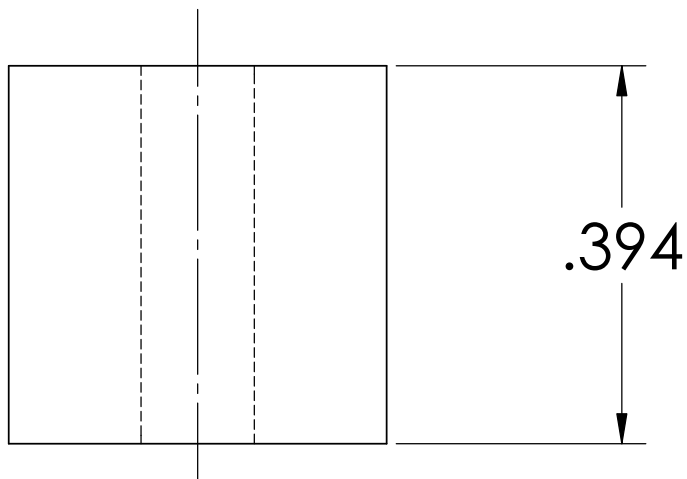


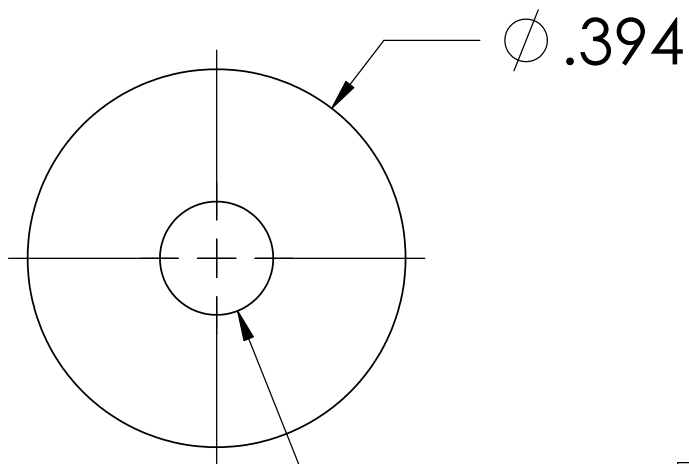
NOTES: (UNLESS OTHERWISE SPECIFIED)

1. DIMENSIONS IN INCHES
2. ALL MACHINING FLUIDS SHALL BE WATER SOLUBLE AND FREE OF SULFUR, CHLORINE AND SILICONE, SUCH AS CINCINNATI MILACRON'S CIMTECH 410 (STAINLESS STEEL)


REV.	DATE	DCN #	DRAWING TREE #
A	24 JUNE 2004	E040303-00	



D030076_magnetspacer_steel.step



4-40 UNC-2B

DIMENSIONS ARE IN INCHES		NAME	DATE	 CALIFORNIA INSTITUTE OF TECHNOLOGY MASSACHUSETTS INSTITUTE OF TECHNOLOGY
TOLERANCES: .XX ±0.01 .XXX ±0.005 ANGULAR ±1°		CIT	03/02	
MATERIAL		CHECKED		SYSTEM
300 SSSL				ADVANCED LIGO
FINISH		COMMENTS:		SUB-SYSTEM
				SUS
				NEXT ASSY
				MC: COIL
				PART NAME
				MAGNET SPACER (STEEL)
		SIZE	DWG. NO.	REV.
		A	D030076	A
		SCALE: NTS	PROJECTION:	SHEET 1 OF 1