

NOTES: (UNLESS OTHERWISE SPECIFIED)

1. DIMENSIONS IN INCHES

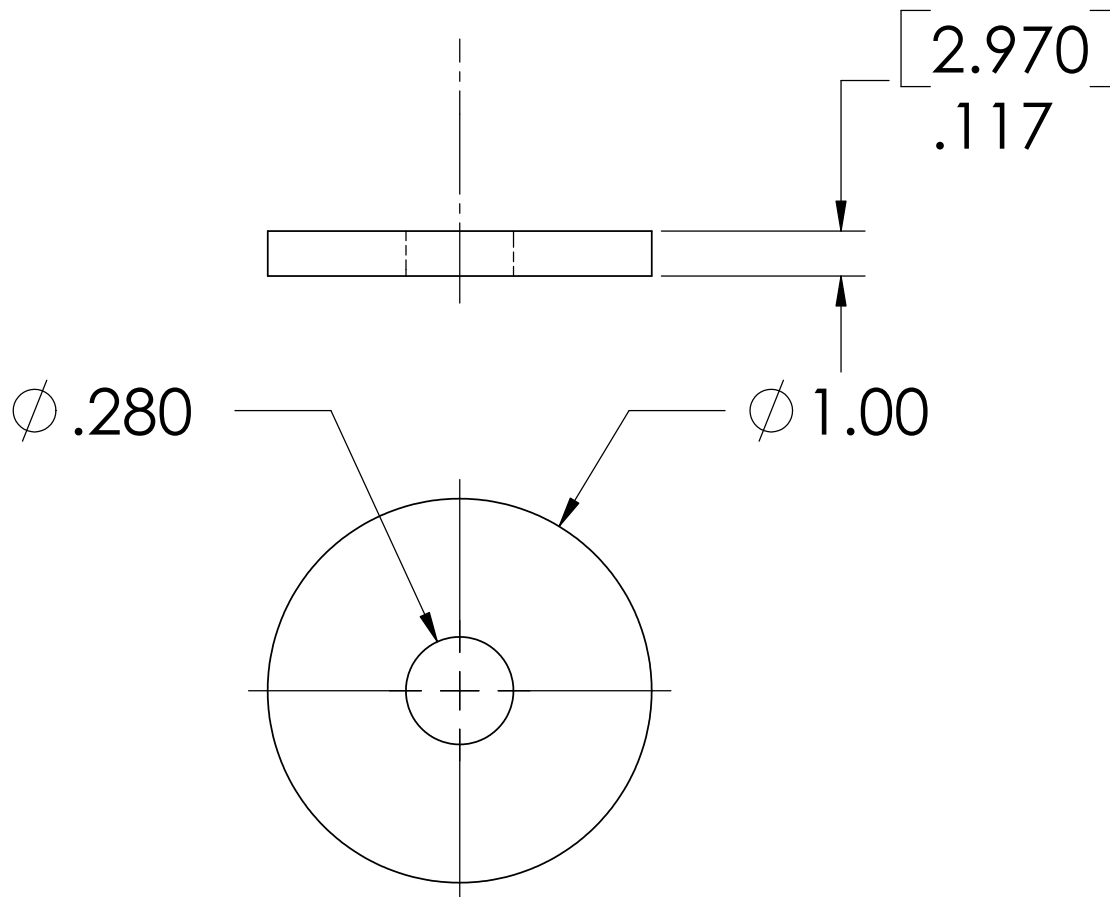
2. REMOVE ALL SHARP EDGES, R.02 MIN


3. ALL MACHINING FLUIDS SHALL BE WATER SOLUBLE AND FREE OF SULFUR, CHLORINE AND SILICONE, SUCH AS CINCINNATI MILACRON'S CIMTECH 410 (STAINLESS STEEL)

REV.	DATE	
A	24th JUNE 2004	E040303-00



D030079\_10g\_ADDONMASS.step



DIMENSIONS ARE IN INCHES TOLERANCES: .XX ±0.01 .XXX ±0.005 ANGULAR ±1°	DRAWN	NAME	DATE	 <b>CALIFORNIA INSTITUTE OF TECHNOLOGY          MASSACHUSETTS INSTITUTE OF TECHNOLOGY</b>	
	CIT		06/28/02		
	CHECKED				SYSTEM ADVANCED LIGO
					SUB-SYSTEM SUS
MATERIAL 300 SERIES STAINLESS	COMMENTS:			NEXT ASSY MC: UPPER MASS	
FINISH				PART NAME UPPER MASS 10g ADD ON MASS	
	SIZE <b>A</b>	DWG. NO. D030079	REV. A		
	SCALE: NTS			SHEET 1 OF 1	