

NOTES: (UNLESS OTHERWISE SPECIFIED)

1. DIMENSIONS IN INCHES.
 2. BREAK ALL SHARP EDGES.
 3. ALL MACHINING FLUIDS SHALL BE WATER SOLUABLE AND FREE OF SULFUR, CHLORINE AND SILICONE, SUCH AS CINCINNATI MILACRON'S CIMTECH 410 (STAINLESS STEEL.)
- ④ ETCH OR STAMP THE DRAWING PART NUMBER ON NOTED SURFACE OF PART AND THEN A THREE DIGIT SERIAL NUMBER. SERIAL NUMBERS START AT 001 FOR THE FIRST PART AND PROCEED CONSEQUETIVELY. USE .07" HIGH CHARACTERS. EXAMPLE: ~~D010165-A 001~~
D030113-A 001

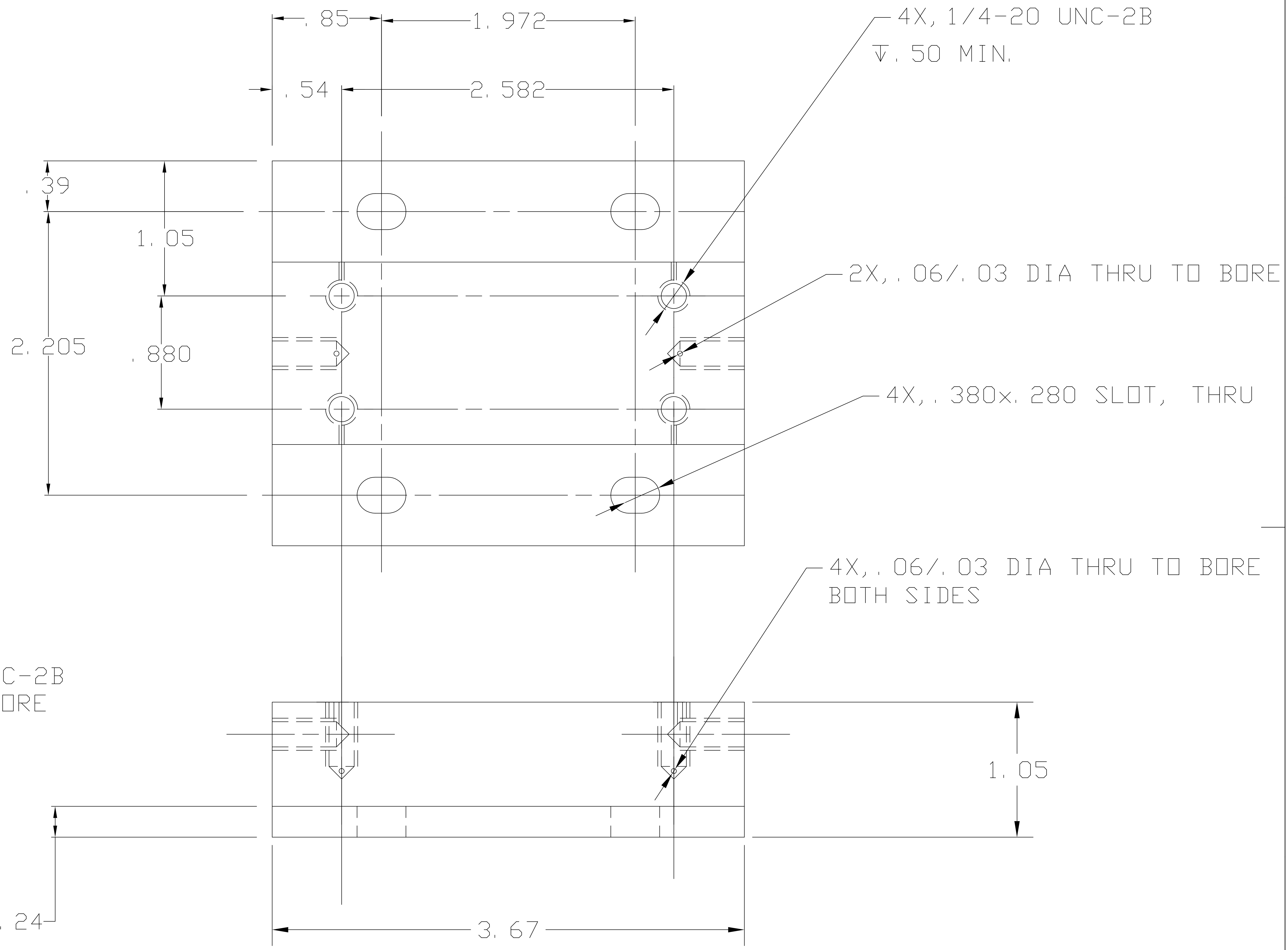
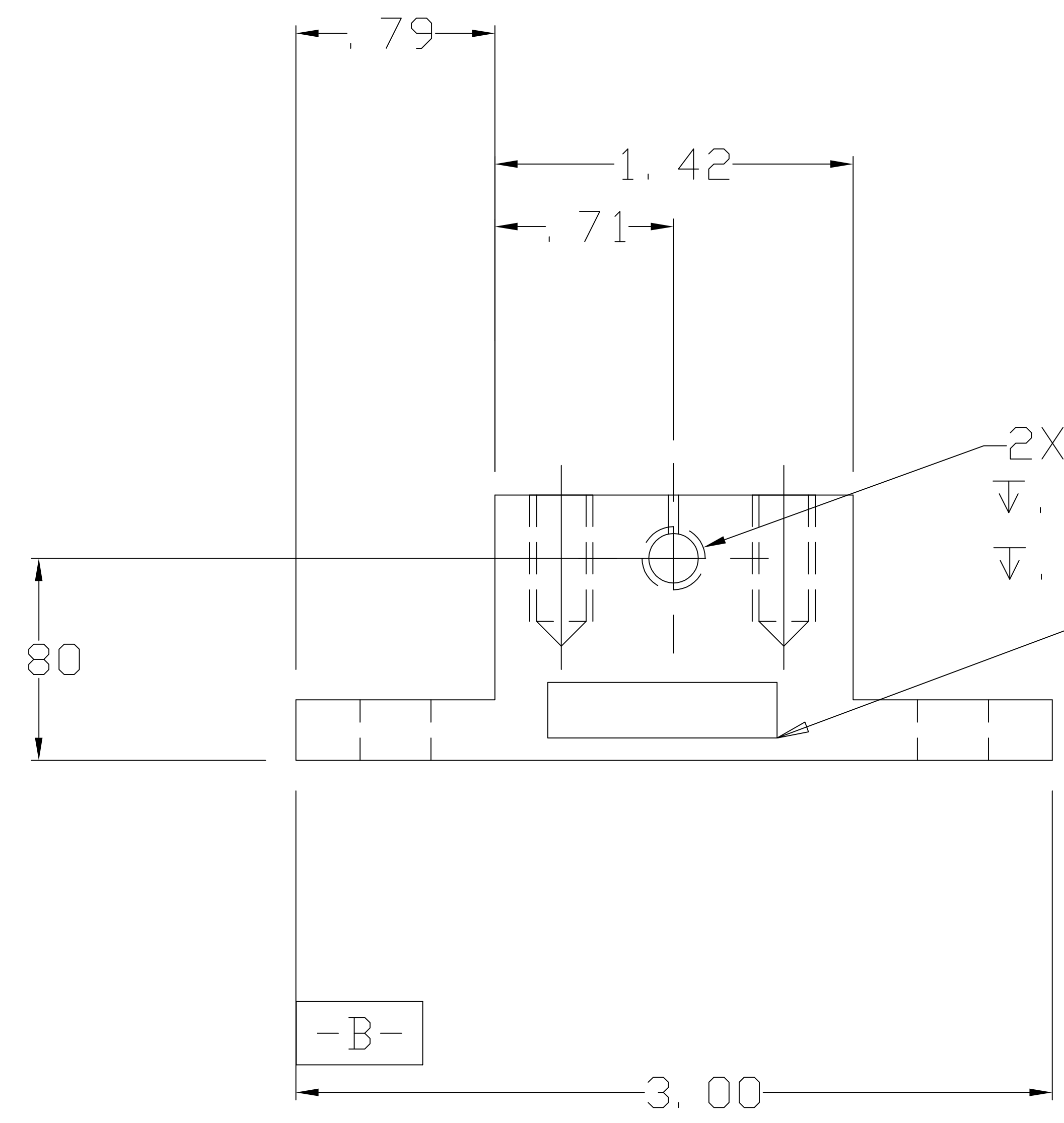
REV	DATE	DRAWN BY	CHECKED	DCC	DCN/DESCRIPTION
A	9/03	J. Romie			E030462/INITIAL RELEASE

A

B

C

D



QTY REQD	FSCM NO	PART OR IDENTIFYING NO	NOMENCLATURE OR DESCRIPTION	MATERIAL SPECIFICATION	ITEM NO
PARTS LIST					
UNLESS OTHERWISE SPECIFIED DIMENSIONS ARE IN INCHES TOLERANCES ARE:			APPROVALS		
FRACTIONS			DRAWN		DATE
DECIMALS			J. ROMIE		3/03
0. XX=±0.01			CHECKED		
0. XXX=±0.005					
ANGLES=±0.5°					
DO NOT SCALE DRAWING			TITLE		
MATERIAL			LIGO CALIFORNIA INSTITUTE OF TECHNOLOGY		
ALUM 6061-T6			MASSACHUSETTS INSTITUTE OF TECHNOLOGY		
FINISH			DWC NO.		
			D030113		
NEXT ASSEMBLY			REV		
D030110			A		
FILE LOCATION			SCALE		
/home/dcc/docs/D030113.pdf			NTS		
			SHEET 1 OF 1		