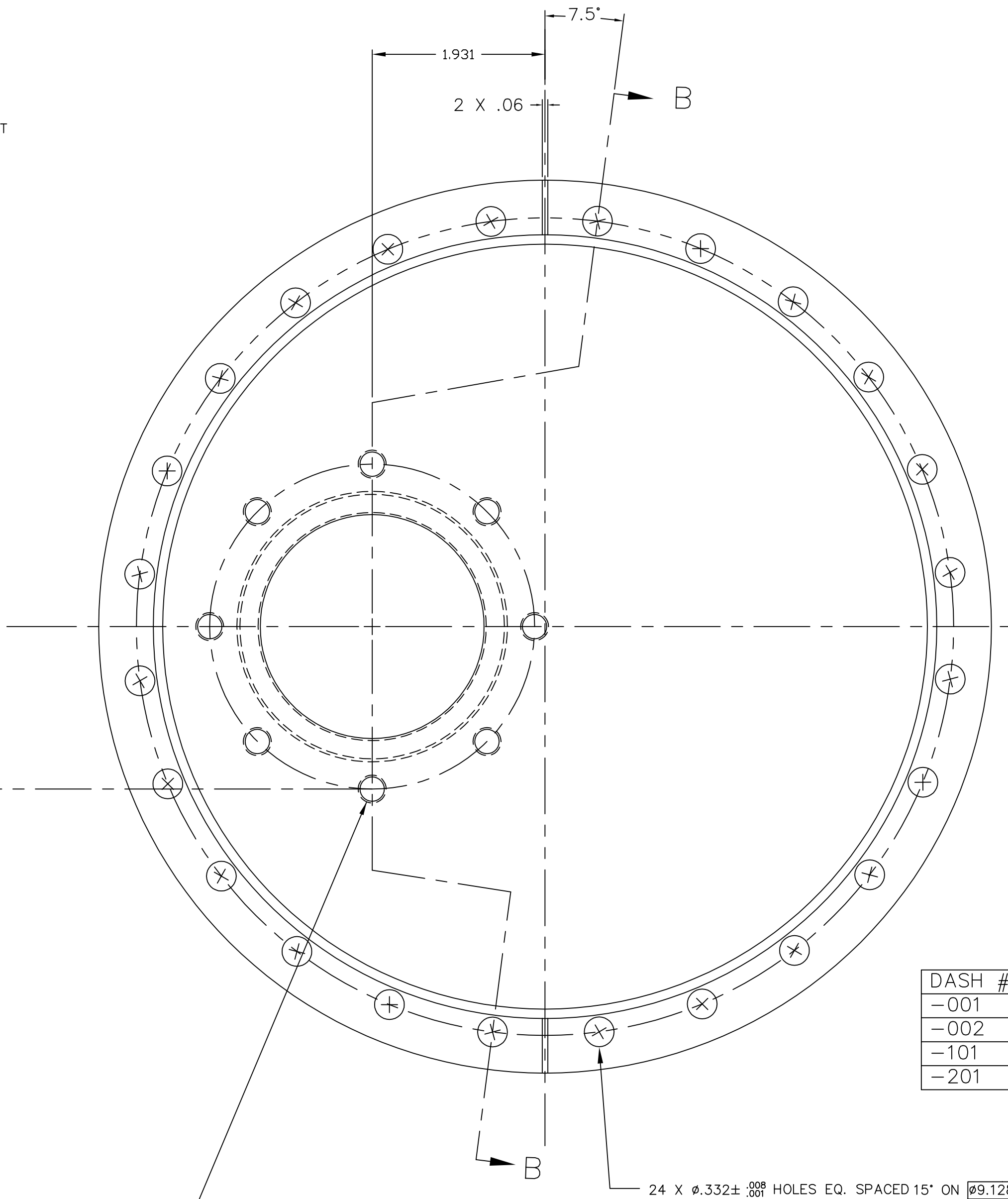
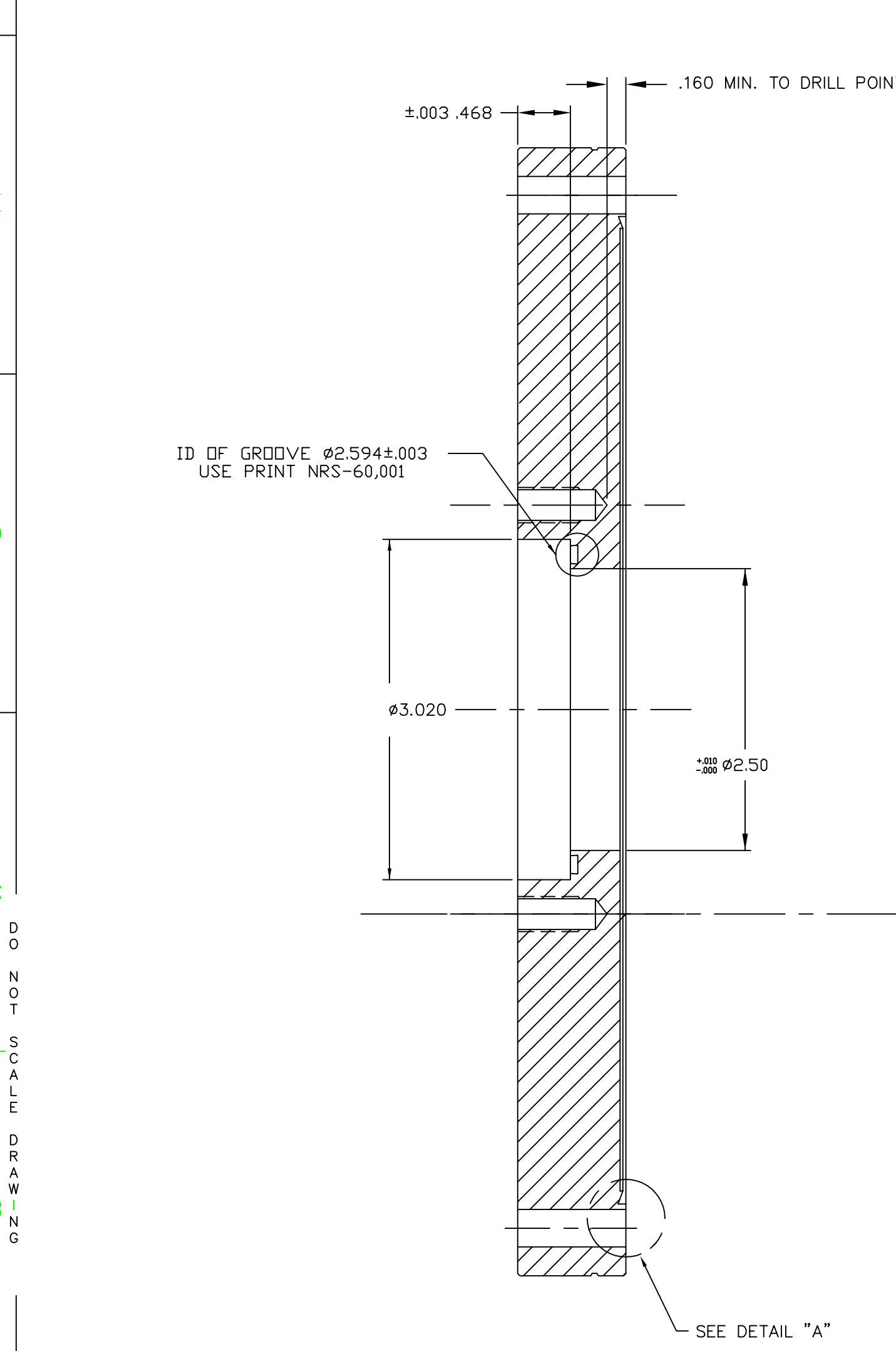
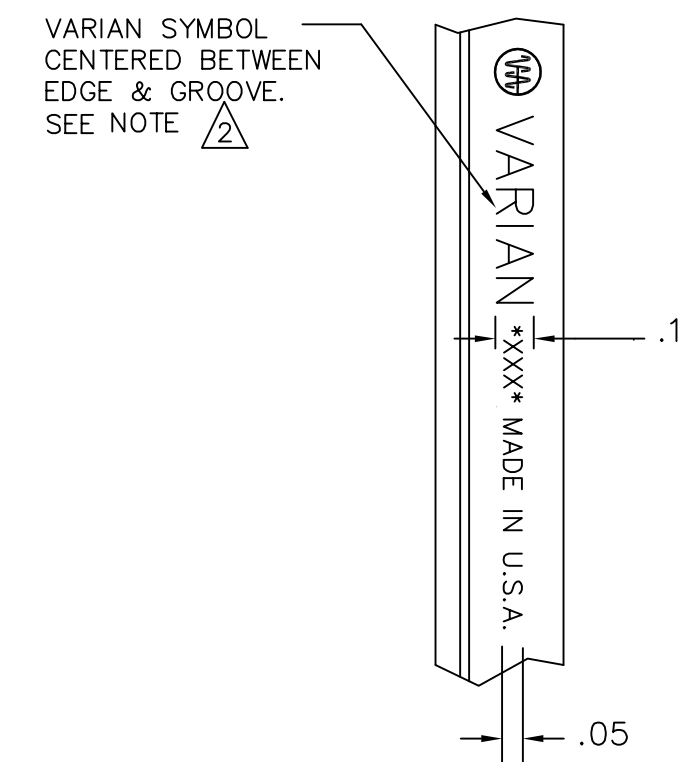
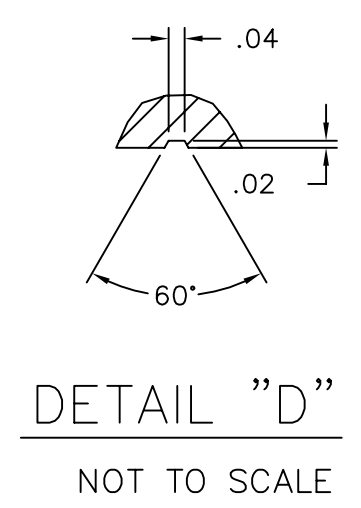
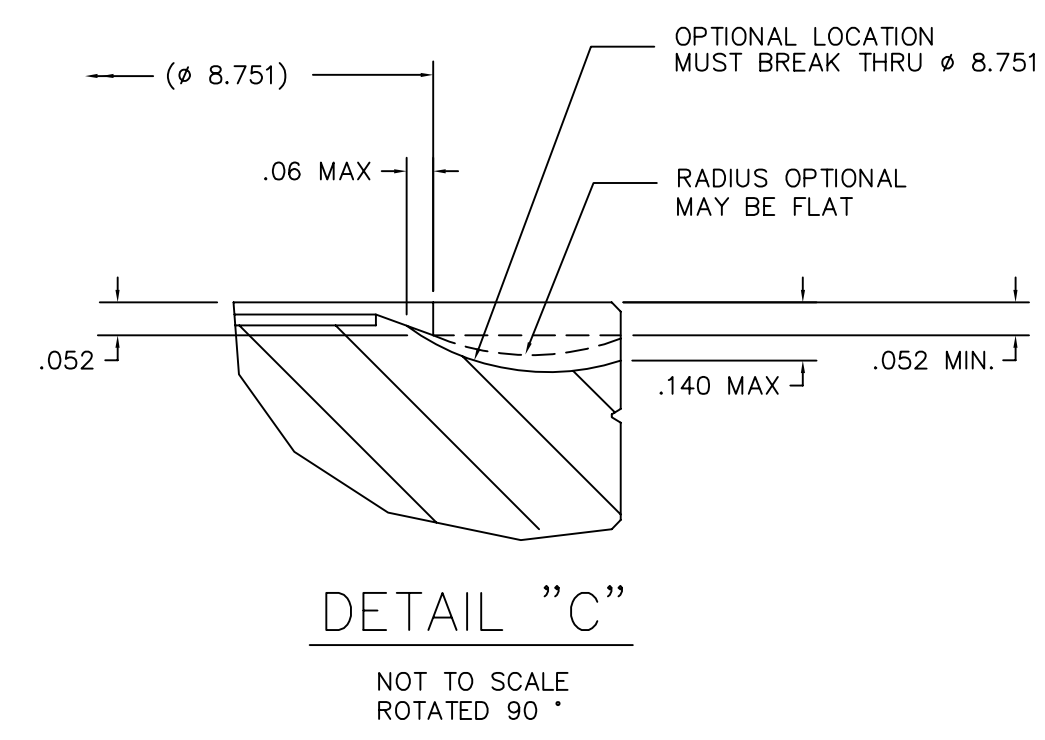
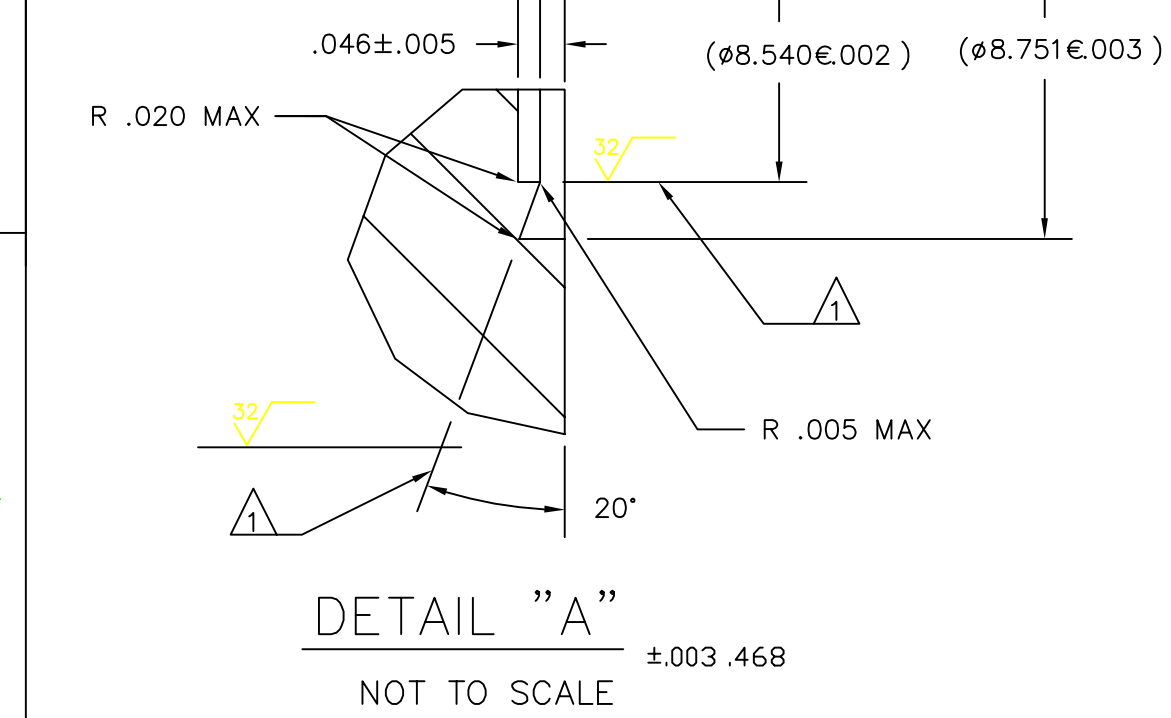
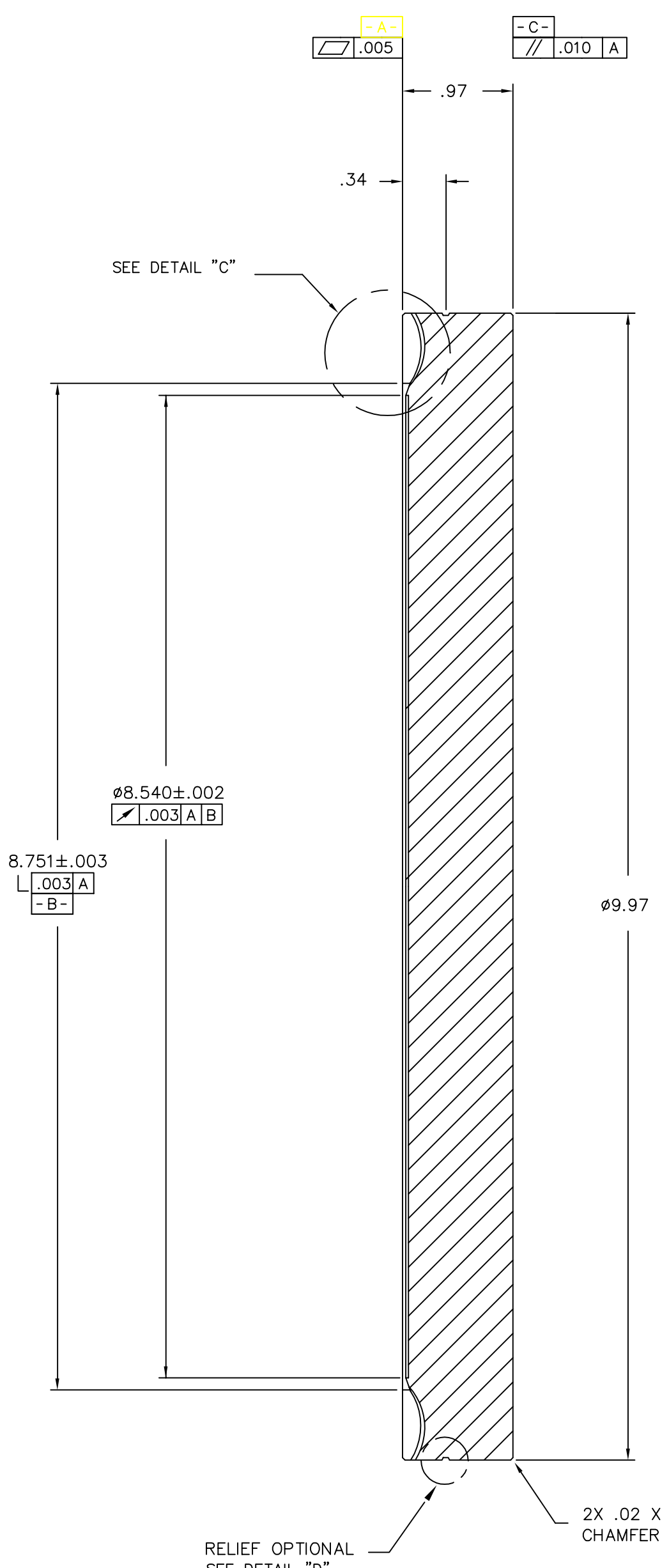


QTY.				FIND	PART NUMBER	DESCRIPTION
-201	-101	-002	-001	1	Z1000-401	304 S/S ESR PLATE DISC
-	1	-	-	2	Z1000-601	304 S/S DISC
1	-	-	-	3	Z1000-804	316LN S/S DISC



DASH #	"A"
-001	5/16-24 UNF-2B TAP
-002	M8X1.25 -6H
-101	5/16-24 UNF-2B TAP
-201	5/16-24 UNF-2B TAP



- NOTES:
- THIS SURFACE MUST BE PROTECTED DURING MACHINING & HANDLING AND BE FREE OF SCRATCHES, NICKS & BURRS.
  - ROLL MARK PER ROUTING.
  - MAKE PER VVP WORKMANSHIP STANDARDS QA-8000
  - CLEAN PER LMP1-6001.
  - PLACE PART WITH SEALING SURFACE DOWN ON CORRUGATED CARDBOARD AND SKIN PACK WITH POLYETHYLENE SHEET.

LIGD D030125-00-D Author Jonathan Kern  
 COS Viewport, Reducer Flange 10.0" OD to 6.0" (Varian) 40mm offset

CAD GENERATED DOCUMENT MANUAL CHANGES NOT PERMITTED				variano VACUUM PRODUCTS							
THIS DOCUMENT CONTAINS PROPRIETARY INFORMATION IT MUST NOT BE REPRODUCED OR DISCLOSED TO OTHERS EXCEPT AS AUTHORIZED IN WRITING BY VARIAN ASSOCIATES				DRAWN	DATE	CHECKED	DATE	APPR.	DATE	APPR.	DATE
FABRICATE IN ACCORDANCE WITH VARIAN FABRICATION PROCEDURES QA 8000 AND/OR M-70000 FOR OTHER REVISIONS SEE ECO HISTORY FILE.				JAN	3-23-99						
SPECIAL 10.00" CFF FLANGE 10.0" OD TO 6.0"				NOT OTHERWISE SPECIFIED FRAC± ANG± 1" DEC.XX±.015 .XXX±.005 FIN. 125RMS		D		MSPB0186		A	
SCALE 1:1				PROD. 70		DRAWING NO.		REV.		SHEET 1 OF 1	
H	G	F	E								

DO NOT SCALE DRAWING

A

G

F

E

D

C

B

A

G

F

E

D

C

B

A