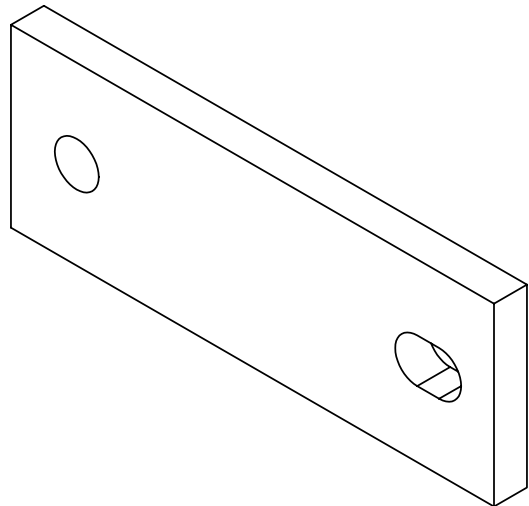
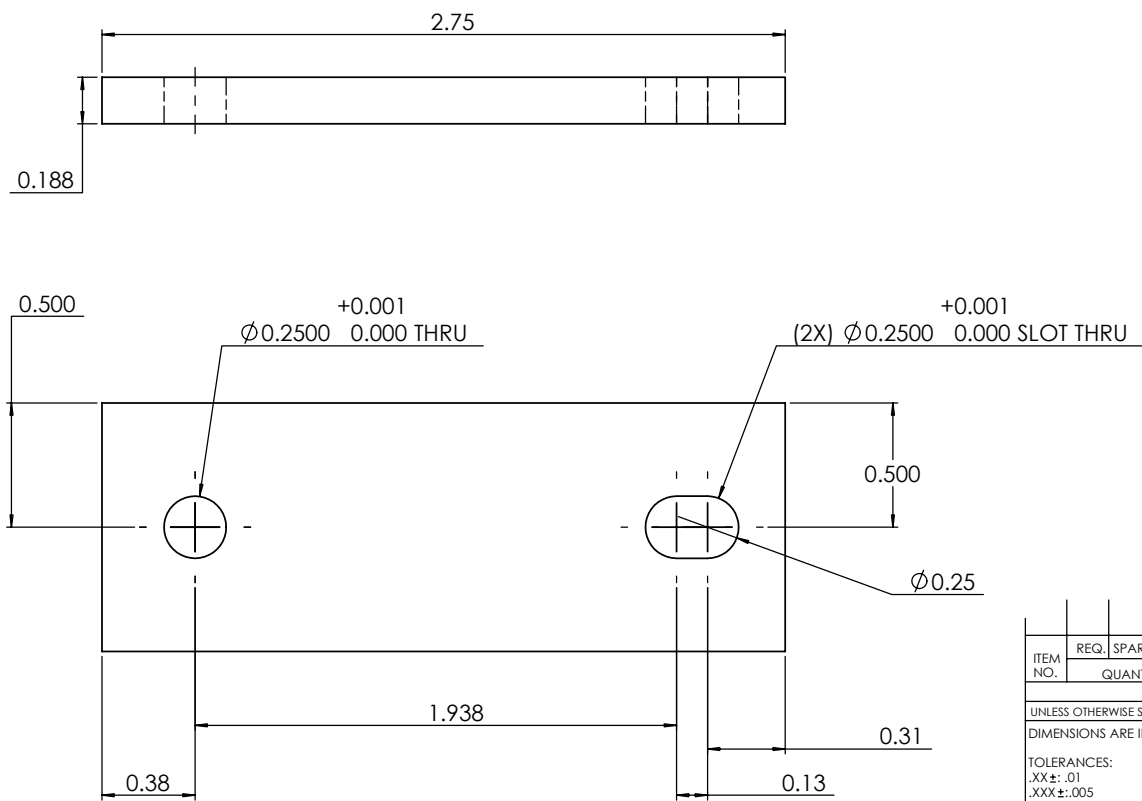


8 7 6 5 4 3 2 1

NOTES: (UNLESS OTHERWISE SPECIFIED)  
 1. REMOVE ALL BURRS AND BREAK SHARP EDGES TO A MAXIMUM OF .015  
 2. PART NUMBER (DRAWING NO., DASH NO., REVISION NO., SERIAL NO.)  
 TO BE CLEARLY MARKED ON THE PART ITSELF

REV.	DATE	DCN #	DRAWING TREE #



ITEM NO.	REQ. QUANTITY	SPARE	TOT.	PART NUMBER	DESCRIPTION	SUPPLIER
PARTS LIST						
UNLESS OTHERWISE SPECIFIED:				DATE	NAME	<b>CALIFORNIA INSTITUTE OF TECHNOLOGY</b> <b>MASSACHUSETTS INSTITUTE OF TECHNOLOGY</b>
DIMENSIONS ARE IN INCHES				7/8/03	D MASON	
TOLERANCES:				SYSTEM		
.XX ± .01				SUB-SYSTEM		
.XXX ± .005				NEXT ASSY		
ANGULAR: ±1				PART NAME		
MATERIAL: 304 SS				OPTIC STAND		
FINISH: NONE				PART NAME		
COMMENTS:				FLAT CLAMP		
SCALE: 2:1				SIZE	DWG. NO.	REV
D030331-00.SLDDRW				<b>B</b>	D030331-00-D	
SHEET 1 OF 1				FILE NAME/LOCATION:		

8 7 6 5 4 3 2 1

DATE