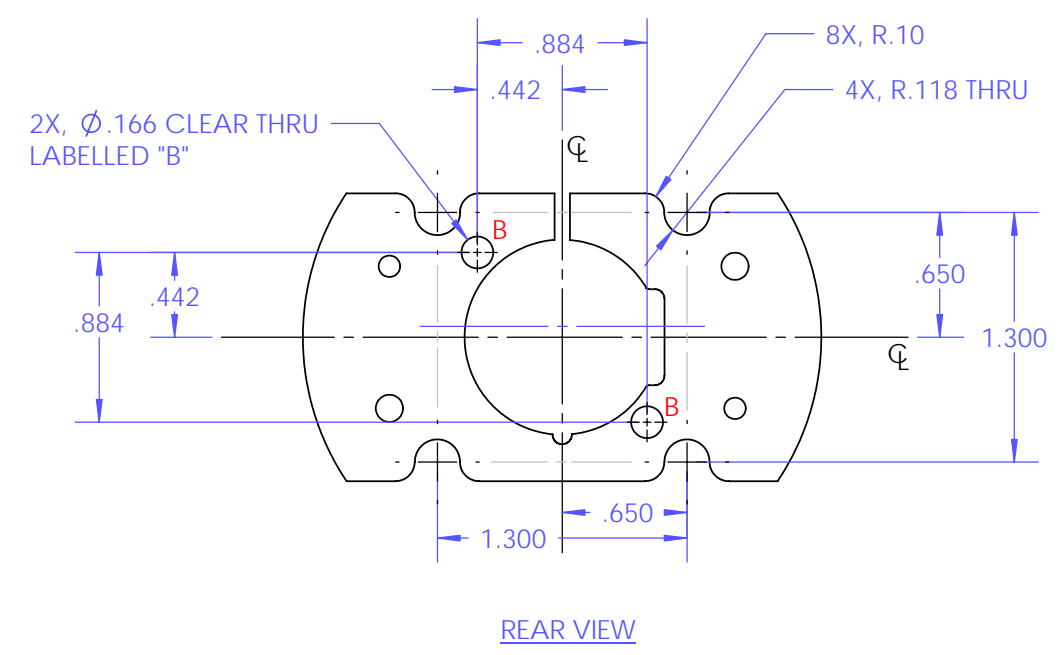
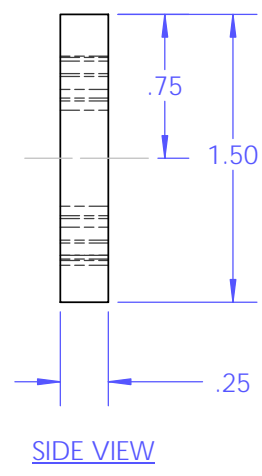
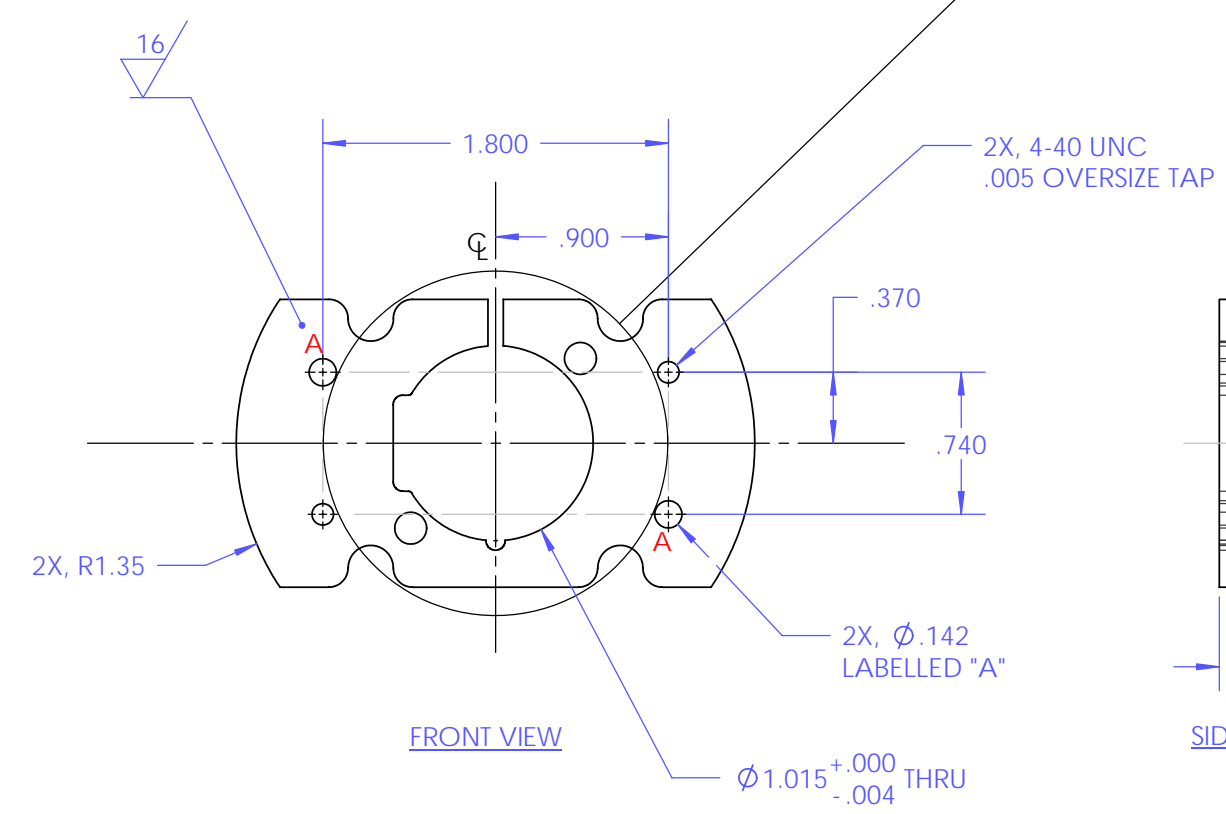
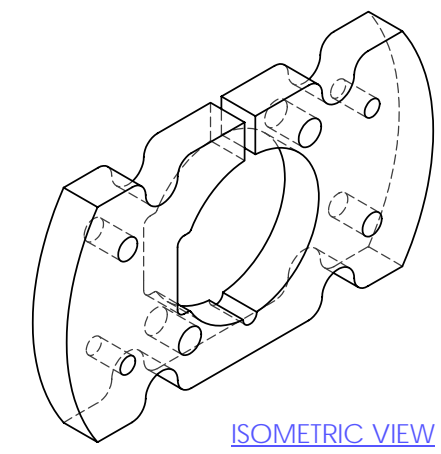
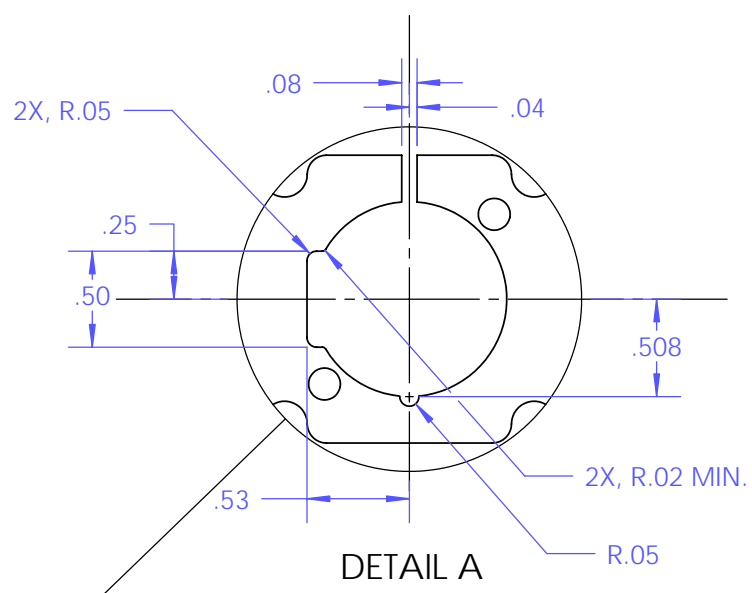
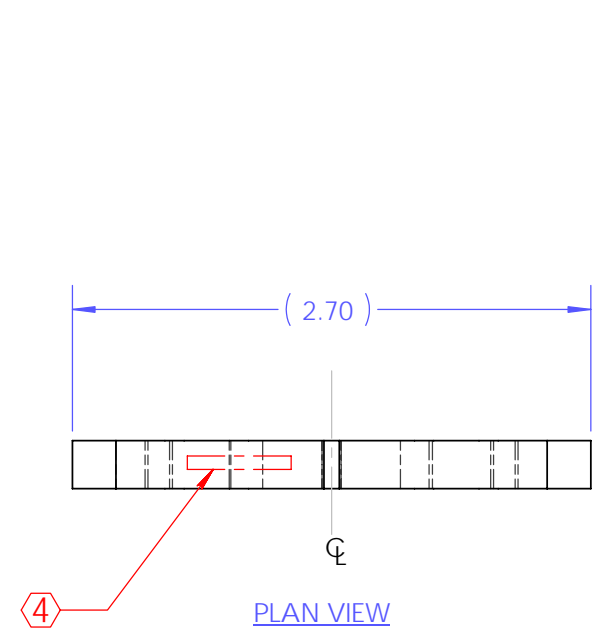


REV.	DATE	DCN #	DRAWING TREE #
A	FEB 17th 2006	E060057-00	E060059-A



NOTES: (UNLESS OTHERWISE SPECIFIED)			PARTS LIST	
1. REMOVE ALL SHARP EDGES, R.02 MIN. 2. DO NOT SCALE FROM DRAWING. 3. ALL MACHINING FLUIDS SHALL BE WATER SOLUBLE AND FREE OF SULFUR, CHLORINE AND SILICONE, SUCH AS CINCINNATI MILACRON'S CIMTECH 410 (STAINLESS STEEL) ④ ENGRAVE DRAWING PART NUMBER ON NOTED SURFACE OF PART AND A THREE DIGIT SERIAL NUMBER. SERIAL NUMBERS START AT 101 FOR THE FIRST PART AND PROCEED CONSECUTIVELY. USE .07" HIGH CHARACTERS. EXAMPLE: D030703- 101. A VIBRATORY TOOL MAY BE USED.			DIMENSIONS ARE IN INCHES	
			TOLERANCES: .XX ± 0.01 .XXX ± 0.005 ANGULAR ± 0.5 °	
			MATERIAL 6061-T6 Al	
FINISH 32 µinch			SYSTEM ADVANCED LIGO SUB-SYSTEM SUS NEXT ASSY ETM: COIL PART NAME COIL FORMER BRACKET	
DRAWN CIT/RAJ CHECKED LI / CIT APPROVED			DATE 27/10/03 11/03	
SCALE: 1:1			PROJECTION: SHEET 1 OF 1	