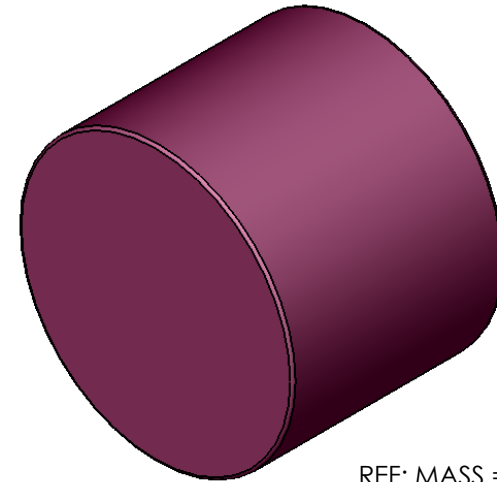
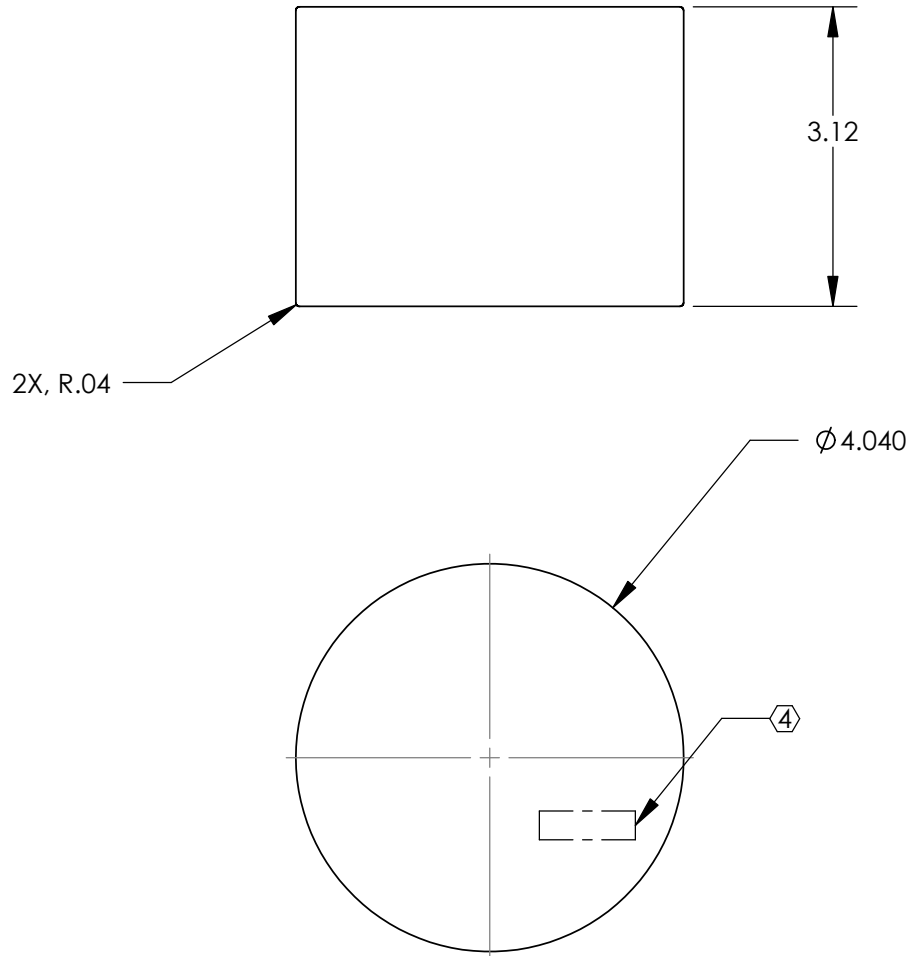


REV.	DATE	DCN #	DRAWING TREE #
A	FEB 17th 2006	E060057-00	E060059-A



REF: MASS = 5.1766 (kg)

NOTES: (UNLESS OTHERWISE SPECIFIED)

1. REMOVE ALL SHARP EDGES, R.02 MIN.
2. DO NOT SCALE FROM DRAWING.
3. ALL MACHINING FLUIDS SHALL BE WATER SOLUBLE AND FREE OF SULFUR, CHLORINE AND SILICONE, SUCH AS CINCINNATI MILACRON'S CIMTECH 410 (STAINLESS STEEL)
- ④ SCRIBE, ENGRAVE OR STAMP DRAWING PART NUMBER ON NOTED SURFACE OF PART AND THEN A THREE DIGIT SERIAL NUMBER. SERIAL NUMBERS START AT 001 FOR THE FIRST PART AND PROCEED CONSECUTIVELY. USE .07" HIGH CHARACTERS. EXAMPLE: D020188-001. A VIBRATORY TOOL MAY BE USED.

REF: DENSITY 7900 kg/m³ REFERENCE DESIGN MEETING DM019 SEPT 2nd 2004.
<http://www.ligo.caltech.edu/SUS.html>

REF: DESIGNED BY C Torrie, M. P-Lloyd, N. Robertson

DIMENSIONS ARE IN INCHES

TOLERANCES:
 .XX ± 0.01
 .XXX ± 0.005

ANGULAR ± 0.5 °

MATERIAL
 303/304 SSSL

FINISH
 32 μ inch

	NAME	DATE
DRAWN	C Torrie	28 JAN 2004
CHECKED	L Jones	29 JAN 2004
APPROVED		



SYSTEM ADVANCED LIGO

SUB-SYSTEM SUS

NEXT ASSY ETM_C_PTYPE TEST + PEN. MASS

PART NAME INSERTS, MAIN BODY

SIZE **DWG. NO.** D040037 **REV.** A

SCALE: NTS **PROJECTION:** SHEET 1 OF 1