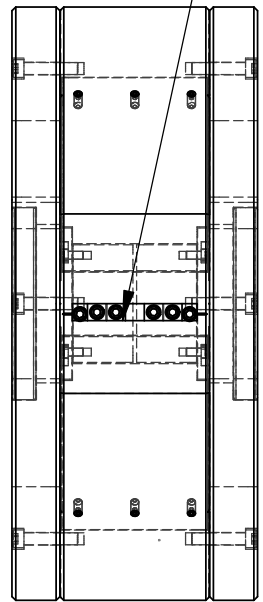
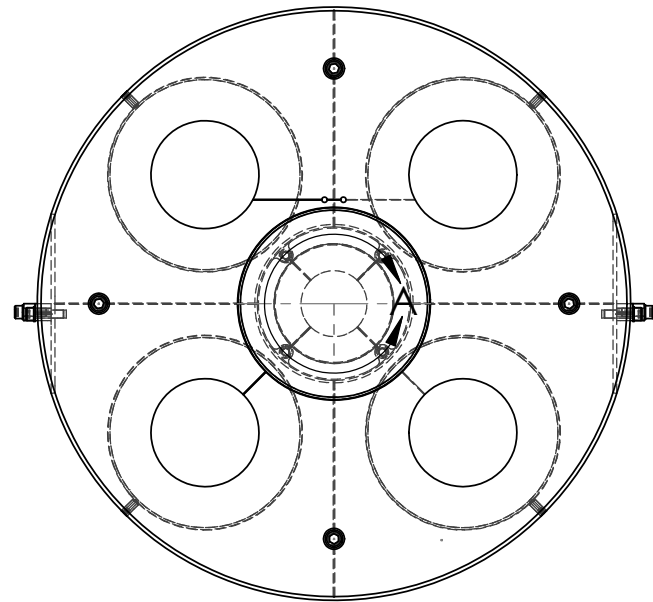
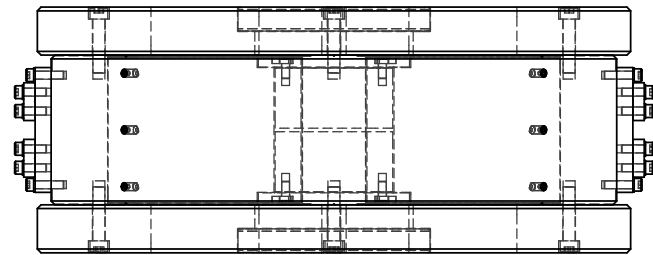
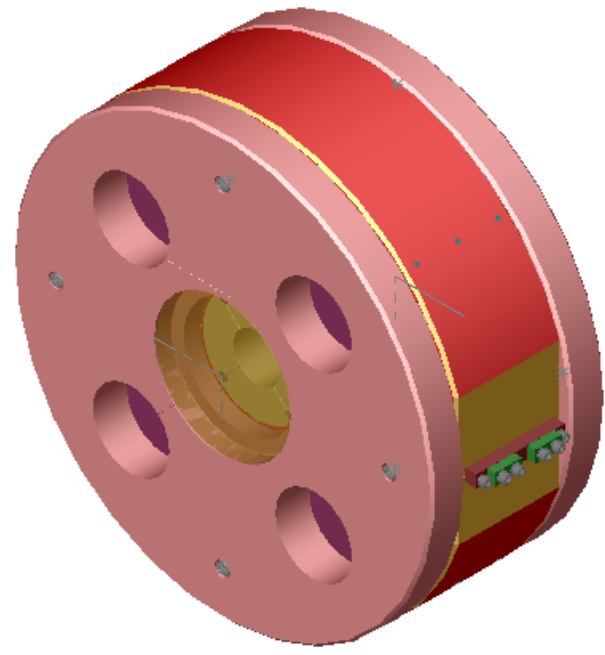


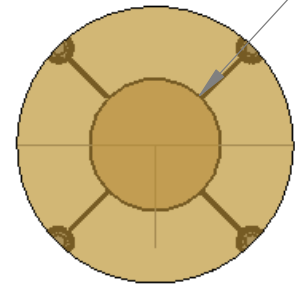
REV.	DATE	DCN #	DRAWING TREE #
A	FEB 17th 2006	E060057-00	E060059-A



REF DRAWING LIGO-D040161
FOR INFORMATION ON POSITION
OF CLAMP WRT FLEXURE POINT
AND "d" VALUE.



Mass = 39.5643 (kg)



Ø 1.38
THRU HOLE
REQUIREMENT Ø .75" MIN
FOR CAVITY TESTS

DETAIL A
SCALE 1 : 2

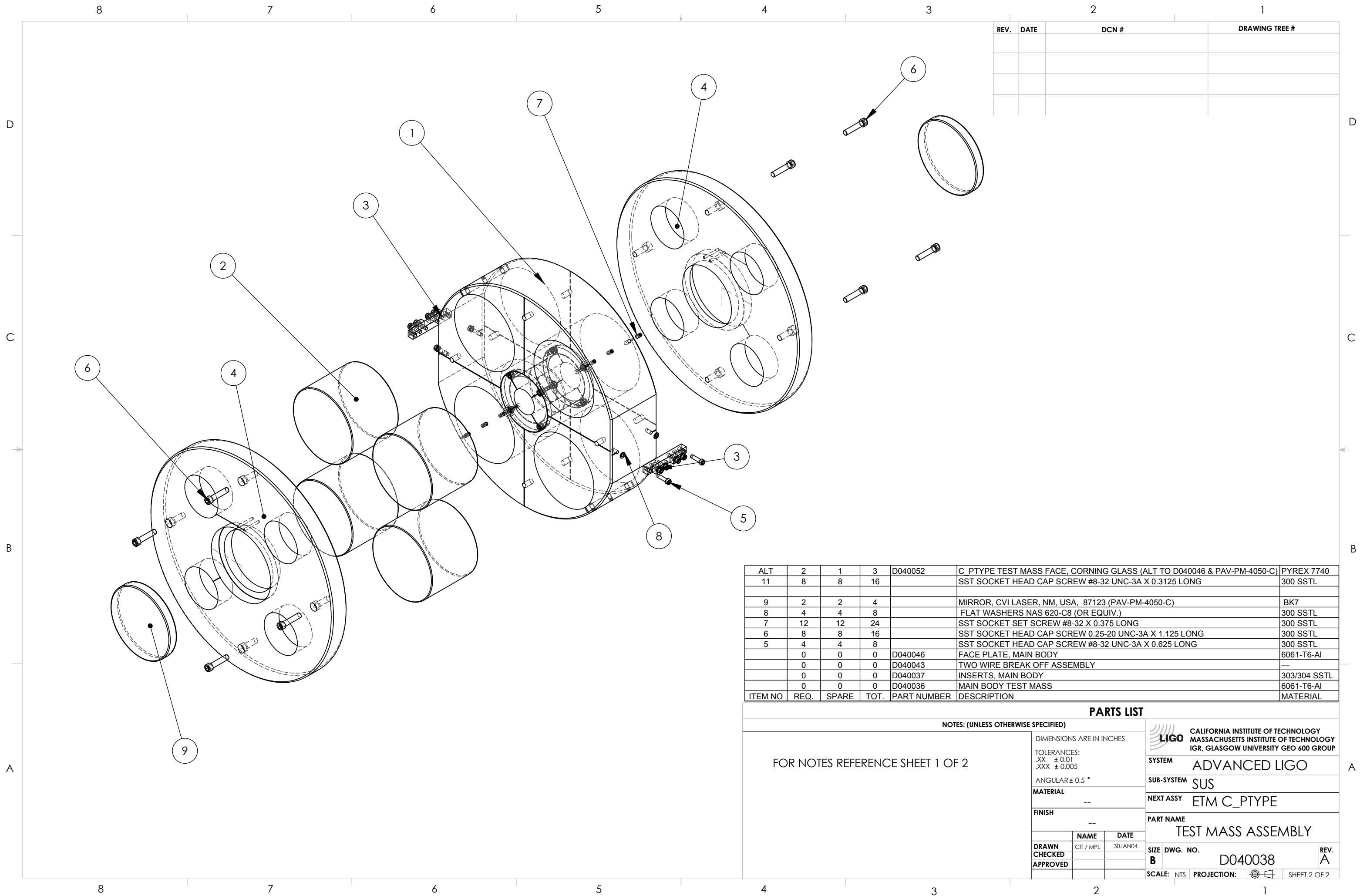
NOTES: (UNLESS OTHERWISE SPECIFIED)

- DO NOT SCALE FROM DRAWING.
- REFERENCE TECHNICAL NOTE LIGO-T040013
- PHYSICAL PROPERTIES (MUST BE UPDATED MANUALLY IF CHANGE IS MADE)
ASSUMING DENSITY(kg/m³) of 7900 for "303/304 SSSL", 2510 for "BK7 & 2700 FOR "6061-T6-Al"
Mass = 39.5643 kilograms
Center of mass: (meters)
X = 0.000, Y = 0.000, Z = 0.000
Moments of inertia: (kg*m²) Taken at the output coordinate system.
I_{xx} = 0.462, I_{yy} = 0.273, I_{zz} = 0.272
- AS SHOWN IN THE BILL OF MATERIALS ON SHEET 2 OF 2 THERE ARE TWO ALTERNATIVE ARRANGEMENTS FOR THE TEST MASS ASSEMBLY. IN ASSEMBLY LIGO-D040053 BOTH D040046 & PAV-PM-4050-C ARE REPLACED BY LIGO-D040052.

PARTS LIST

DIMENSIONS ARE IN INCHES		
TOLERANCES: .XX ± 0.01 .XXX ± 0.005		
ANGULAR ± 0.5 °		
MATERIAL --		
FINISH --		
	NAME	DATE
DRAWN	CIT / MPL	30JAN04
CHECKED		
APPROVED		

CALIFORNIA INSTITUTE OF TECHNOLOGY MASSACHUSETTS INSTITUTE OF TECHNOLOGY IGR, GLASGOW UNIVERSITY GEO 600 GROUP		
SYSTEM	ADVANCED LIGO	
SUB-SYSTEM	SUS	
NEXT ASSY	ETM C_PTYPE	
PART NAME		
TEST MASS ASSEMBLY		
SIZE	DWG. NO.	REV.
B	D040038	A
SCALE:	NTS	PROJECTION:
SHEET 1 OF 2		



REV.	DATE	DCN #	DRAWING TREE #

ALT	REQ.	SPARE	TOT.	PART NUMBER	DESCRIPTION	MATERIAL
2	1	3	D040052	C_PTYPE TEST MASS FACE, CORNING GLASS (ALT TO D040046 & PAV-PM-4050-C)	PYREX 7740	
11	8	8	16	SST SOCKET HEAD CAP SCREW #8-32 UNC-3A X 0.3125 LONG	300 SSSL	
9	2	2	4	MIRROR, CVI LASER, NM, USA, 87123 (PAV-PM-4050-C)	BK7	
8	4	4	8	FLAT WASHERS NAS 620-C8 (OR EQUIV.)	300 SSSL	
7	12	12	24	SST SOCKET SET SCREW #8-32 X 0.375 LONG	300 SSSL	
6	8	8	16	SST SOCKET HEAD CAP SCREW 0.25-20 UNC-3A X 1.125 LONG	300 SSSL	
5	4	4	8	SST SOCKET HEAD CAP SCREW #8-32 UNC-3A X 0.625 LONG	300 SSSL	
0	0	0	D040046	FACE PLATE, MAIN BODY	6061-T6-AI	
0	0	0	D040043	TWO WIRE BREAK OFF ASSEMBLY	---	
0	0	0	D040037	INSERTS, MAIN BODY	303/304 SSSL	
0	0	0	D040036	MAIN BODY TEST MASS	6061-T6-AI	
ITEM NO	REQ.	SPARE	TOT.	PART NUMBER	DESCRIPTION	MATERIAL

PARTS LIST

NOTES: (UNLESS OTHERWISE SPECIFIED)

FOR NOTES REFERENCE SHEET 1 OF 2	DIMENSIONS ARE IN INCHES		CALIFORNIA INSTITUTE OF TECHNOLOGY MASSACHUSETTS INSTITUTE OF TECHNOLOGY IGR, GLASGOW UNIVERSITY GEO 600 GROUP												
	TOLERANCES: .XX ± 0.01 .XXX ± 0.005														
	ANGULAR ± 0.5 °														
	MATERIAL --														
FINISH --		SYSTEM ADVANCED LIGO SUB-SYSTEM SUS NEXT ASSY ETM C_PTYPE PART NAME TEST MASS ASSEMBLY													
<table border="1" style="font-size: small;"> <tr><td> </td><td>NAME</td><td>DATE</td></tr> <tr><td> </td><td>CIT / MPL</td><td>30JAN04</td></tr> <tr><td> </td><td> </td><td> </td></tr> <tr><td> </td><td> </td><td> </td></tr> </table>			NAME	DATE		CIT / MPL	30JAN04							SIZE DWG. NO. D040038 REV. A SCALE: NTS PROJECTION: SHEET 2 OF 2	
	NAME	DATE													
	CIT / MPL	30JAN04													