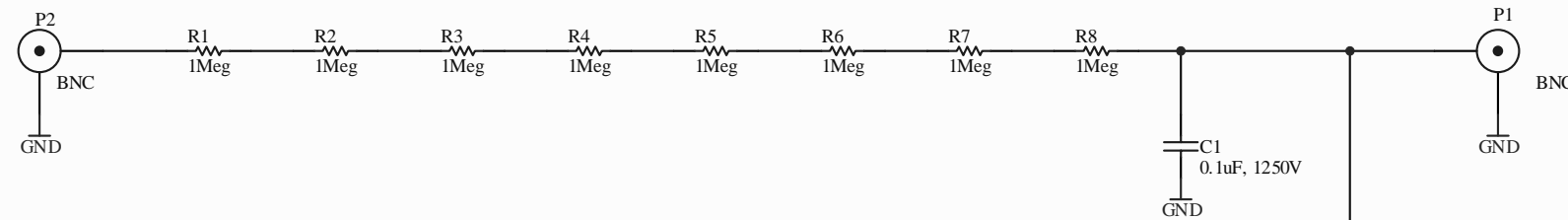


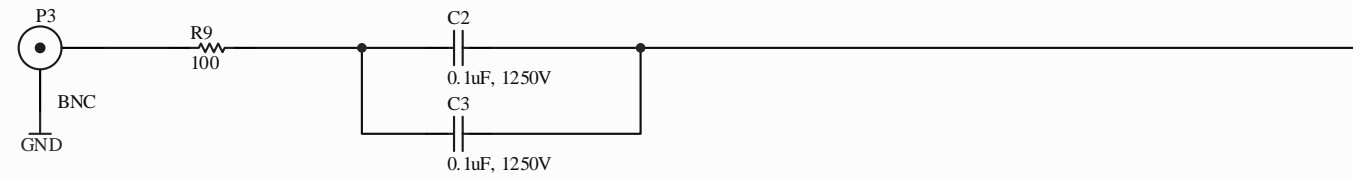
## PZT Driver Input



## Output to PZT

Approximate PZT Capacitance is 95nF

## Oscillator Input



Notes:

1. Response from Driver to PZT is single pole at ~0.05Hz with PZT connected.
2. C3 and C1 can be removed to set pole at ~0.1Hz
3. PZT Driver input should be limited to < 300V to avoid breakdown of BNC connectors and RG58 cable

Title <b>OMC PZT Interface Box</b>			LIGO Laboratory California Institute of Technology Massachusetts Institute of Technology		LIGO <sup>®</sup>	
Size: B	DCC Number: D040168-00	SCH / PCB Revision: 00	Engineer: J. Heefner	Date: 4/23/2004	Time: 11:02:29 AM	
File: E:\h\cad\ligo\users\jay\OMC_PZTInterface\OMC_PZTInterface.SchDoc				Sheet 1 of 1		