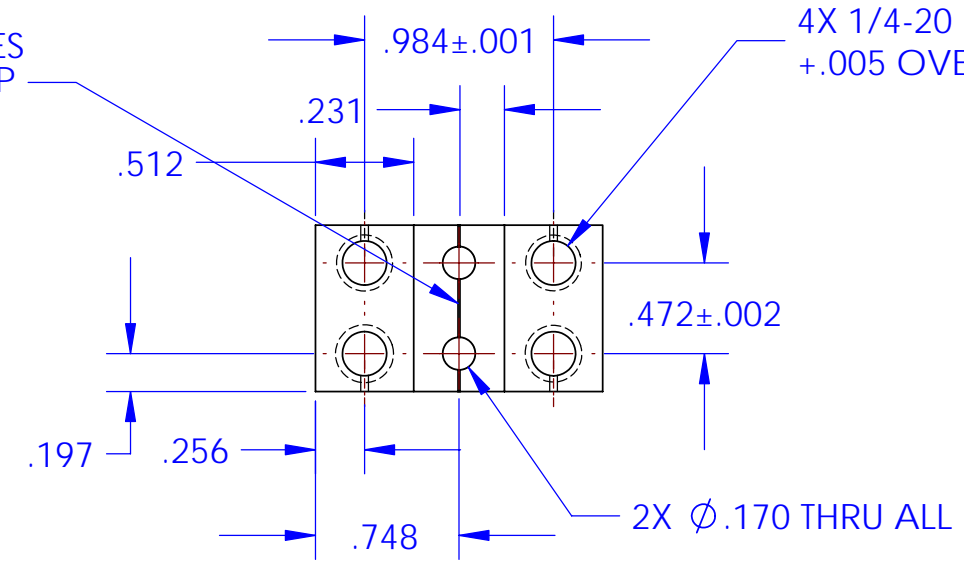


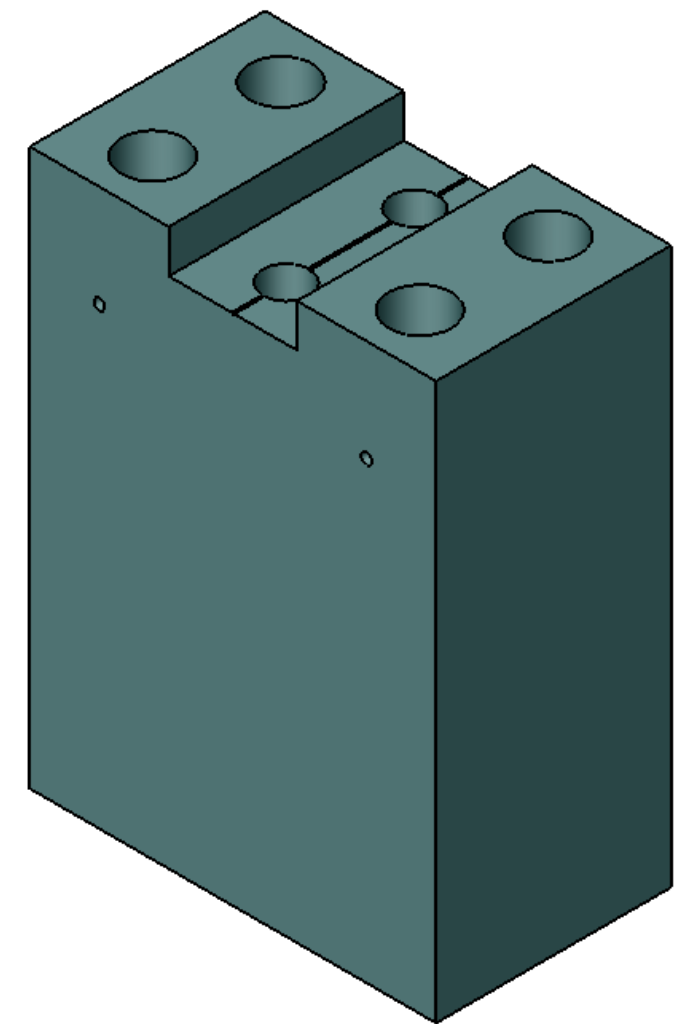
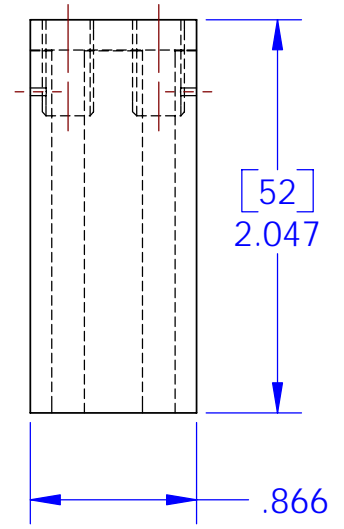
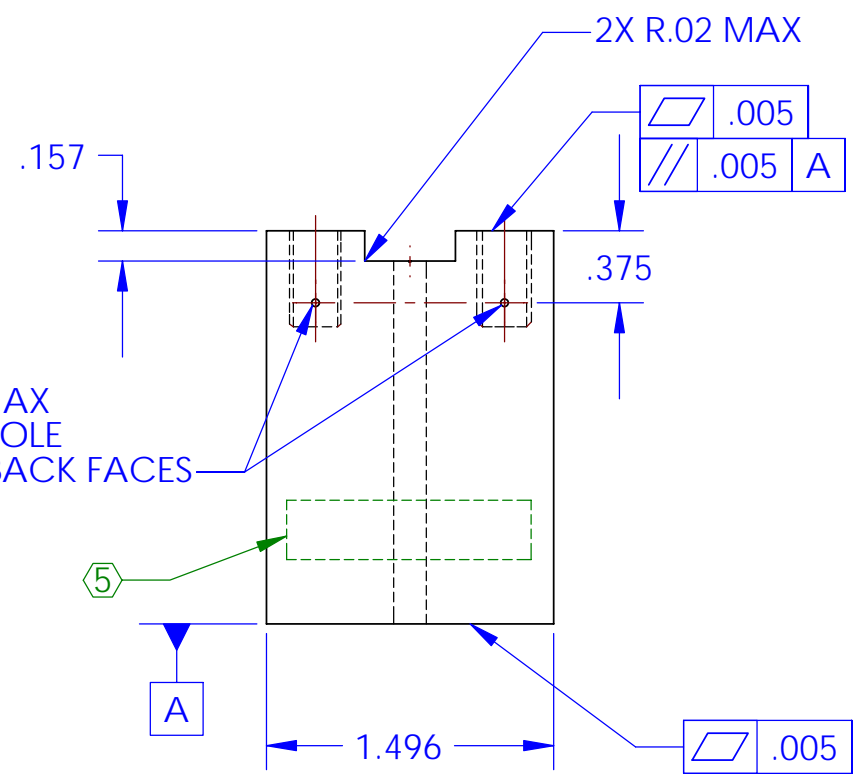
REV.	DATE	DCN #	DRAWING TREE #
A	23MAR05	E050063-00-K	E0500062-A-K

ADD VENT GROOVES  
.02 WIDE BY .02 DEEP

4X 1/4-20 UNC-2B  $\nabla$ .50  
+.005 OVERSIZE TAP



2X VENT HOLES Ø.04 MAX  
THRU TO TRANSVERSE HOLE  
ON BOTH FRONT AND BACK FACES



NOTES: (UNLESS OTHERWISE SPECIFIED)			PARTS LIST	
1. DO NOT SCALE FROM DRAWING. 2. REMOVE ALL SHARP EDGES, R.02 MIN. 3. ALL MACHINING FLUIDS SHALL BE WATER SOLUBLE AND FREE OF SULFUR, CHLORINE AND SILICONE, SUCH AS CINCINNATI MILACRON'S CIMTECH 410 (STAINLESS STEEL) 4. DUAL DIMENSIONS FOR INTERNAL USE 5. SCRIBE, ENGRAVE OR MECHANICALLY STAMP DRAWING (NO INKS OR DYES) PART NUMBER, REVISION ON NOTED SURFACE OF PART FOLLOWED ON THE NEXT LINE WITH A THREE DIGIT SERIAL NUMBER. SERIAL NUMBERS START AT 001 FOR THE FIRST ARTICLE AND PROCEED CONSECUTIVELY. USE .12" HIGH CHARACTERS, UNLESS THE SIZE OF THE PART DICTATES SMALL CHARACTERS. A VIBRATORY TOOL MAY BE USED. EXAMPLE: D050035-A S/N 001			DIMENSIONS ARE IN INCHES TOLERANCES: .XX ± 0.01 .XXX ± 0.005 ANGULAR ± 0.5°	
MATERIAL 303/304 SST			SYSTEM ADVANCED LIGO	
FINISH 32 μ inch			SUB-SYSTEM SUS	
DRAWN M.Perreur-Lloyd 22SEP04			NEXT ASSY C-Ptype ETM TOP MASS	
CHECKED C.Torrie 30SEP04			PART NAME Upper-Lower Central Block	
APPROVED			SIZE DWG. NO. B D040389	
SCALE: 1:1			PROJECTION:  SHEET 1 OF 1	