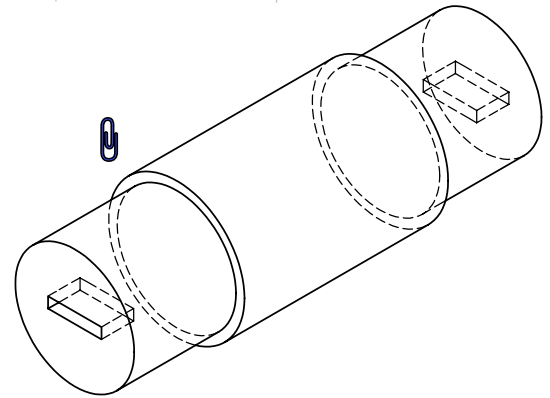
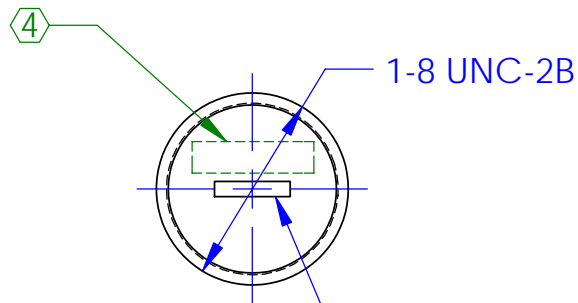


REV.	DATE	DCN #	DRAWING TREE #
A	23MAR05	E050063-00-K	E0500062-A-K

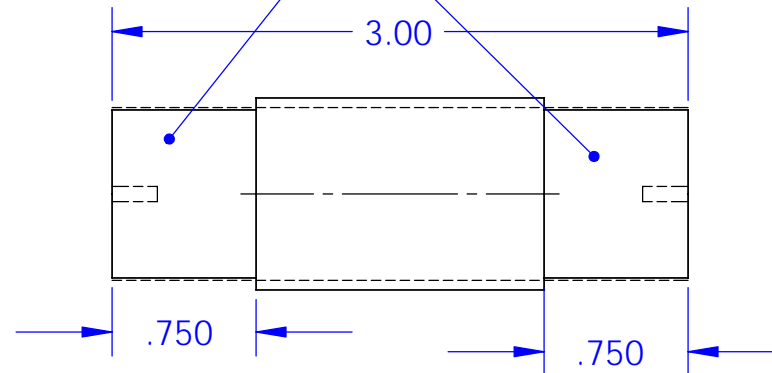
MANUFACTURE FROM 1-8 UNC-2B THREADED ROD



TURN DOWN TO $\phi .875$



1-8 UNC-2B



MILL SLOT FOR STANDARD 5/16" FLAT BLADE SCREWDRIVER ON BOTH END FACES

NOTES: (UNLESS OTHERWISE SPECIFIED)

- DO NOT SCALE FROM DRAWING
- REMOVE ALL SHARP EDGES, R.02 MAX.
- ALL MACHINING FLUIDS SHALL BE WATER SOLUBLE AND FREE OF SULFUR, CHLORINE AND SILICONE, SUCH AS CINCINNATI MILACRON'S CIMTECH 410 (STAINLESS STEEL)
- ④ SCRIBE, ENGRAVE OR MECHANICALLY STAMP DRAWING (NO INKS OR DYES) PART NUMBER, REVISION ON NOTED SURFACE OF PART FOLLOWED ON THE NEXT LINE WITH A THREE DIGIT SERIAL NUMBER. SERIAL NUMBERS START AT 001 FOR THE FIRST ARTICLE AND PROCEED CONSECUTIVELY. USE .12" HIGH CHARACTERS, UNLESS THE SIZE OF THE PART DICTATES SMALL CHARACTERS. A VIBRATORY TOOL MAY BE USED.
EXAMPLE: D050035-A
S/N 001

DIMENSIONS ARE IN INCHES		
TOLERANCES: .XX ± 0.01 .XXX ± 0.005		
ANGULAR ± 0.5 °		
MATERIAL 303/304 SST		
FINISH 32 μ inch		
	NAME	DATE
DRAWN	M.Perreux-Lloyd	07JUL04
CHECKED	C.Torrie	01OCT04
APPROVED		

LIGO CALIFORNIA INSTITUTE OF TECHNOLOGY
MASSACHUSETTS INSTITUTE OF TECHNOLOGY
IGR, GLASGOW UNIVERSITY GEO 600 GROUP

SYSTEM **ADVANCED LIGO**

SUB-SYSTEM **SUS**

NEXT ASSY **C-Ptype ETM TOP MASS**

PART NAME **T-PIECE PITCH ADJUSTMENT MASS**

SIZE **A** DWG. NO. **D040394** REV. **A**

SCALE: 1:2 PROJECTION: SHEET 1 OF 1