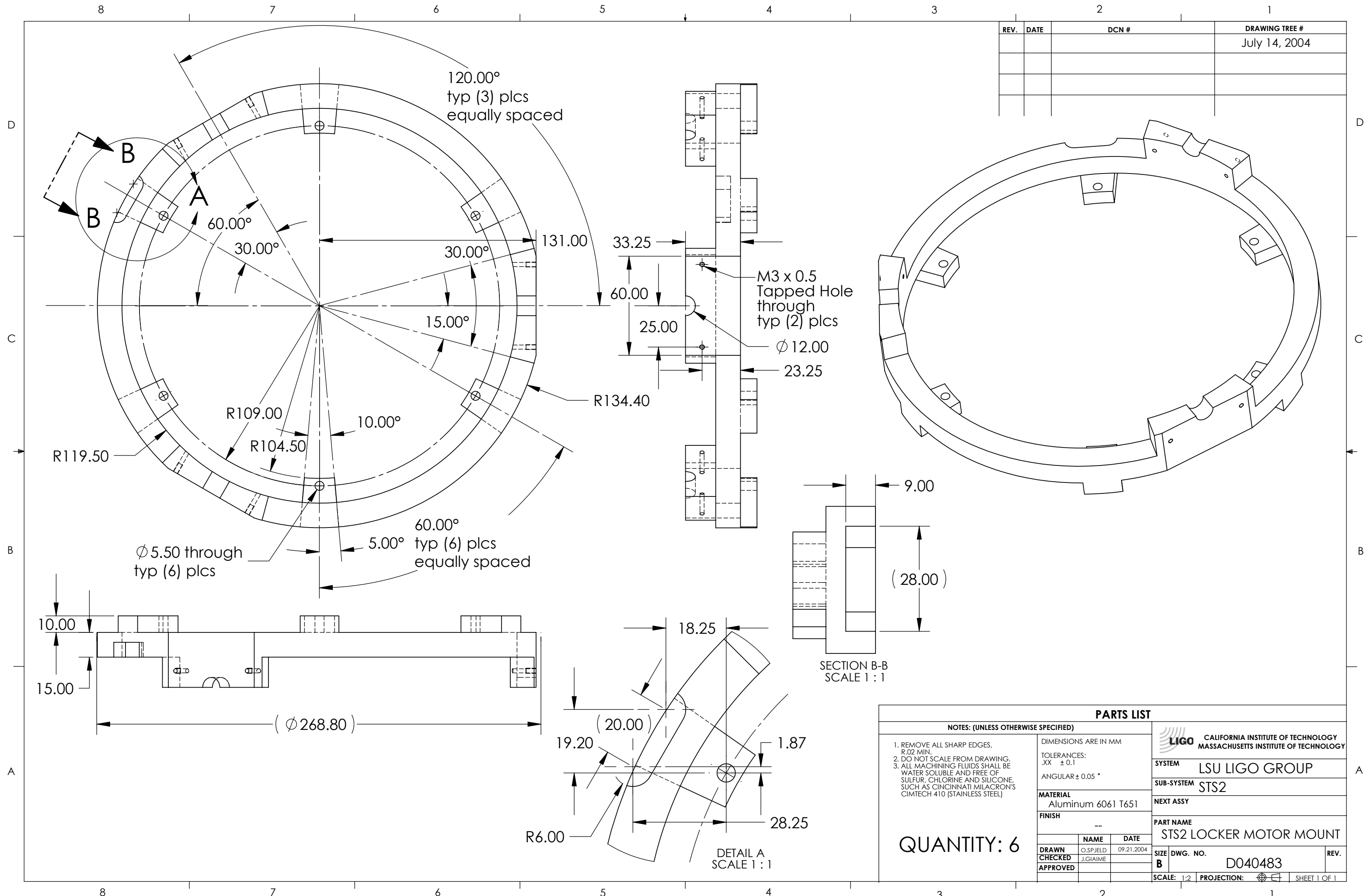


REV.	DATE	DCN #	DRAWING TREE #
			July 14, 2004



PARTS LIST		
NOTES: (UNLESS OTHERWISE SPECIFIED) 1. REMOVE ALL SHARP EDGES, R.02 MIN. 2. DO NOT SCALE FROM DRAWING. 3. ALL MACHINING FLUIDS SHALL BE WATER SOLUBLE AND FREE OF SULFUR, CHLORINE AND SILICONE, SUCH AS CINCINNATI MILACRON'S CIMTECH 410 (STAINLESS STEEL)		
DIMENSIONS ARE IN MM		
TOLERANCES: .XX ± 0.1		
ANGULAR ± 0.05 °		
MATERIAL Aluminum 6061 T651		
FINISH --		
CALIFORNIA INSTITUTE OF TECHNOLOGY LIGO MASSACHUSETTS INSTITUTE OF TECHNOLOGY SYSTEM LSU LIGO GROUP SUB-SYSTEM STS2 NEXT ASSY PART NAME STS2 LOCKER MOTOR MOUNT		
DRAWN O.SPJELD 09.21.2004 CHECKED J.GIAIME APPROVED		SIZE DWG. NO. D040483 REV.
QUANTITY: 6 SCALE: 1:2 PROJECTION: SHEET 1 OF 1		