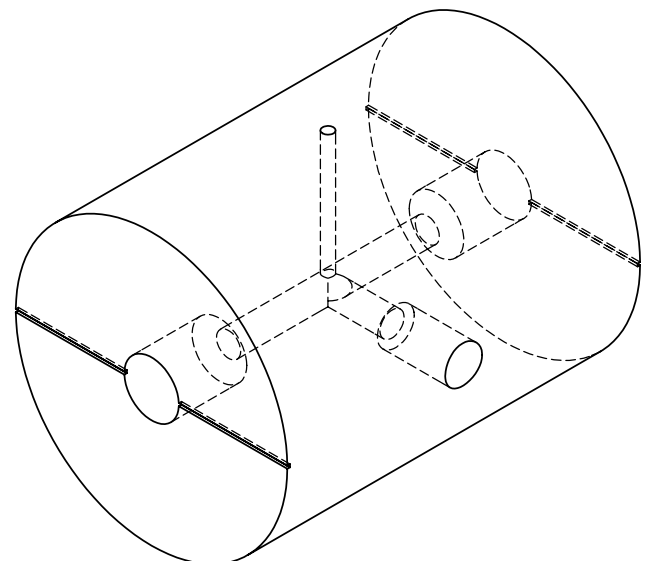
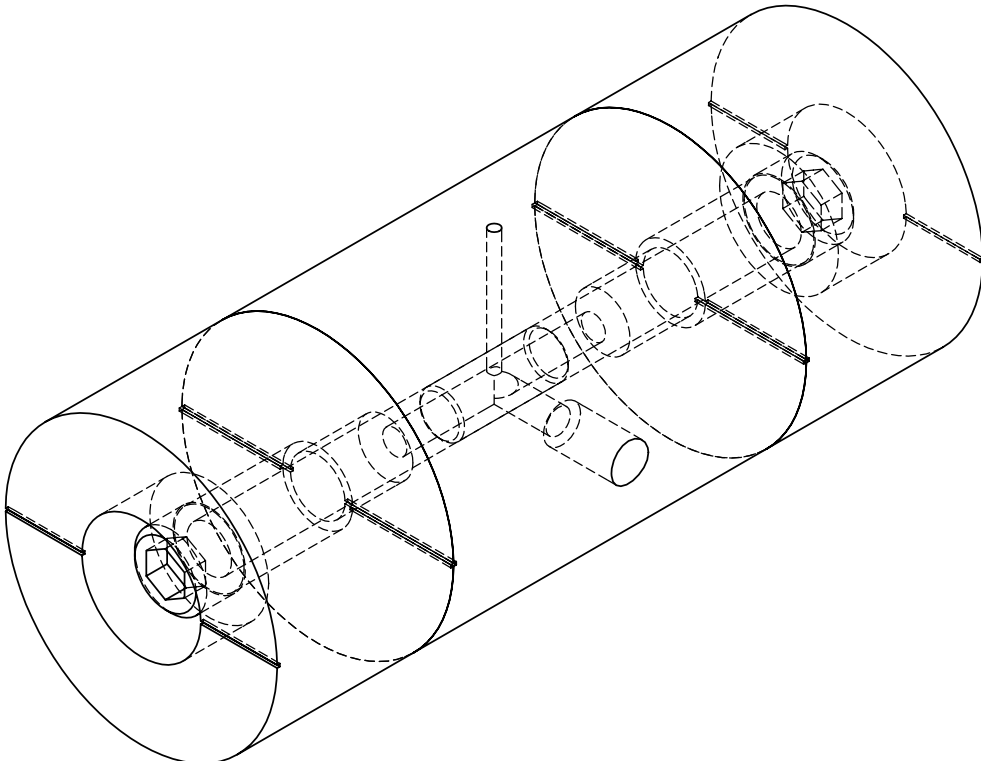


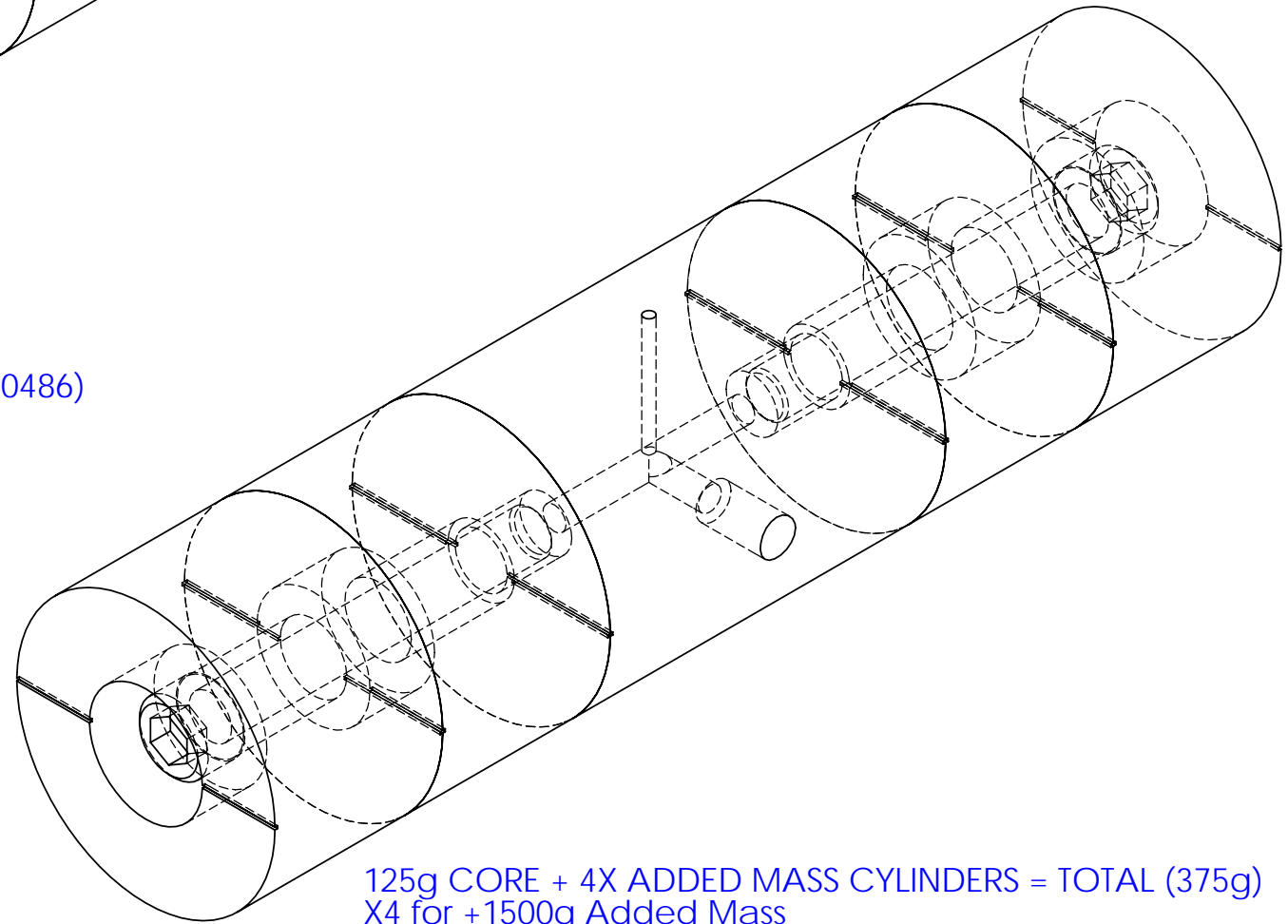
REV.	DATE	DCN #	DRAWING TREE #
A	23MAR05	E050063-00-K	E0500062-A-K



125g CORE (D040485)
X4 for +500g Added Mass

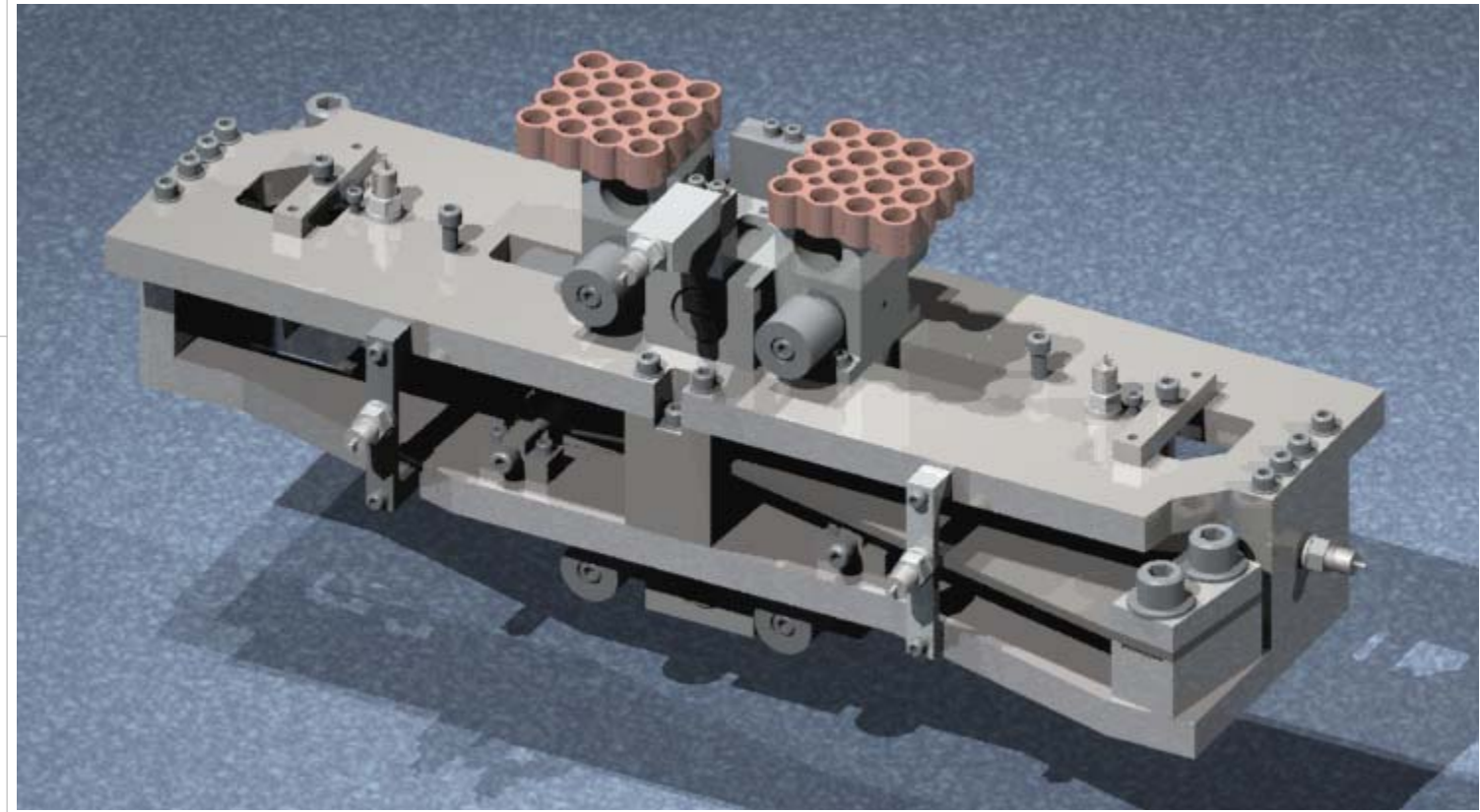


125g CORE + 2X ADDED MASS CYLINDERS (D040486)
= TOTAL (250g) X4 for +1000g Added Mass



125g CORE + 4X ADDED MASS CYLINDERS = TOTAL (375g)
X4 for +1500g Added Mass

C-Ptype ETM TOP MASS WITH +1500g ADDED
NOTE: Four of the above assemblies make up the total added mass



PARTS LIST		
NOTES: (UNLESS OTHERWISE SPECIFIED)		
1. DO NOT SCALE FROM DRAWING.		
2. REMOVE ALL SHARP EDGES, R.02 MIN.		
3. ALL MACHINING FLUIDS SHALL BE WATER SOLUBLE AND FREE OF SULFUR, CHLORINE AND SILICONE, SUCH AS CINCINNATI MILACRON'S CIMTECH 410 (STAINLESS STEEL)		
④ SCRIBE, ENGRAVE OR MECHANICALLY STAMP DRAWING (NO INKS OR DYES) PART NUMBER, REVISION ON NOTED SURFACE OF PART FOLLOWED ON THE NEXT LINE WITH A THREE DIGIT SERIAL NUMBER. SERIAL NUMBERS START AT 001 FOR THE FIRST ARTICLE AND PROCEED CONSECUTIVELY. USE .12" HIGH CHARACTERS, UNLESS THE SIZE OF THE PART DICTATES SMALL CHARACTERS. A VIBRATORY TOOL MAY BE USED.		
EXAMPLE: D050035-A S/N 001		
DIMENSIONS ARE IN INCHES		
TOLERANCES: .XX ± 0.01 .XXX ± 0.005		
ANGULAR ± 0.5 °		
MATERIAL --		
FINISH -- μ inch		
DRAWN M.Petreur-Lloyd 22SEP04		
CHECKED C.Torrie 30Mar05		
APPROVED		
CALIFORNIA INSTITUTE OF TECHNOLOGY MASSACHUSETTS INSTITUTE OF TECHNOLOGY IGR, GLASGOW UNIVERSITY GEO 600 GROUP		
SYSTEM ADVANCED LIGO		
SUB-SYSTEM SUS		
NEXT ASSY C-Ptype ETM Top Mass T-Piece		
PART NAME		
Additional Mass (+500g/+1000g/+1500g)		
SIZE	DWG. NO.	REV.
B	D040487	A
SCALE: 1:2	PROJECTION:	SHEET 1 OF 1