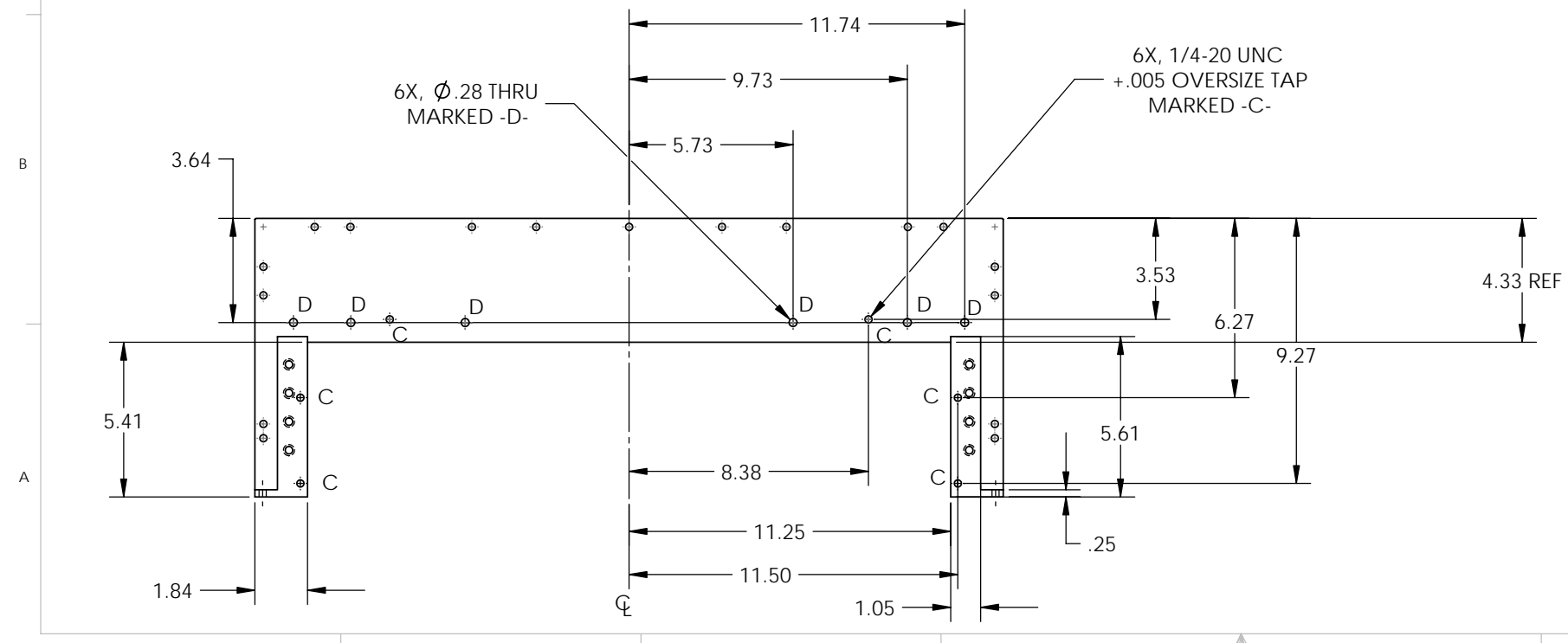
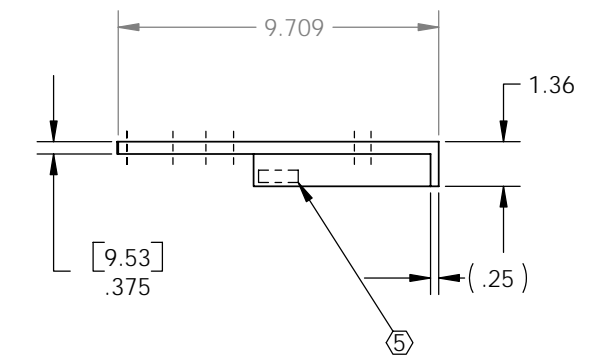
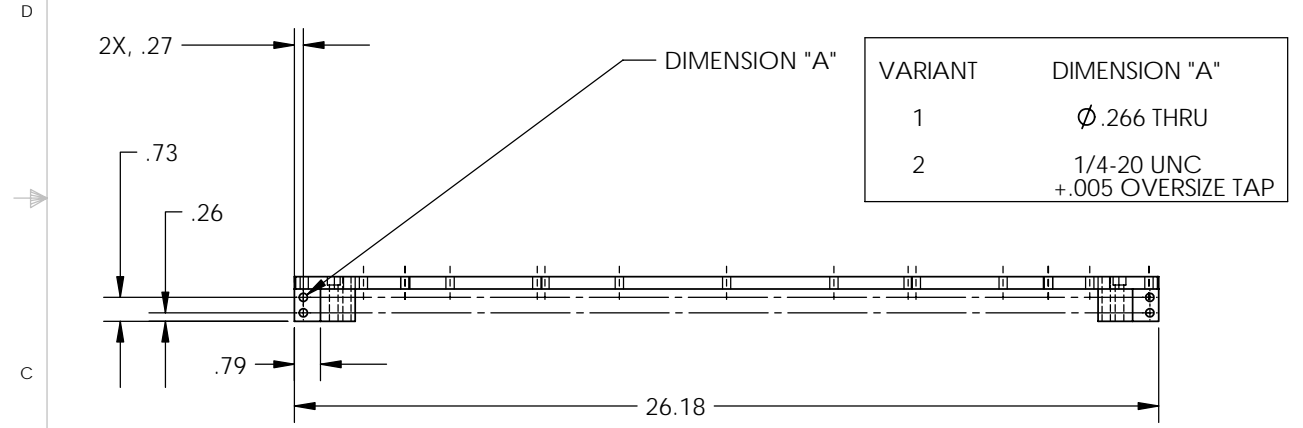
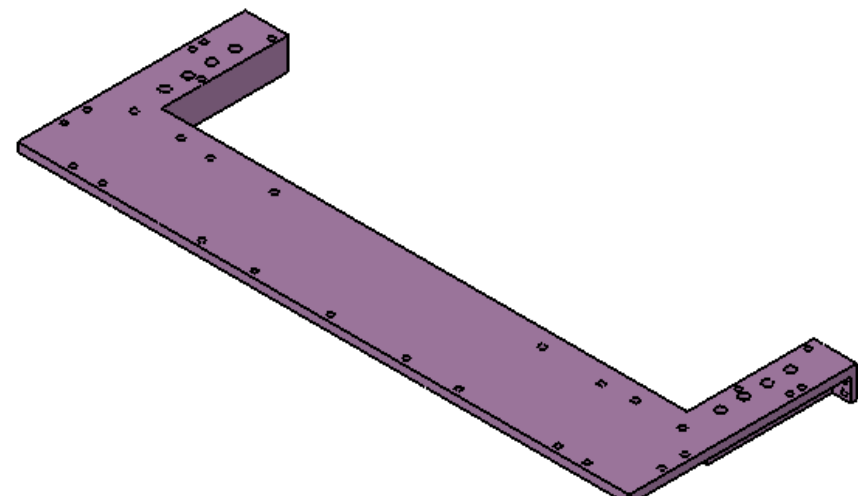
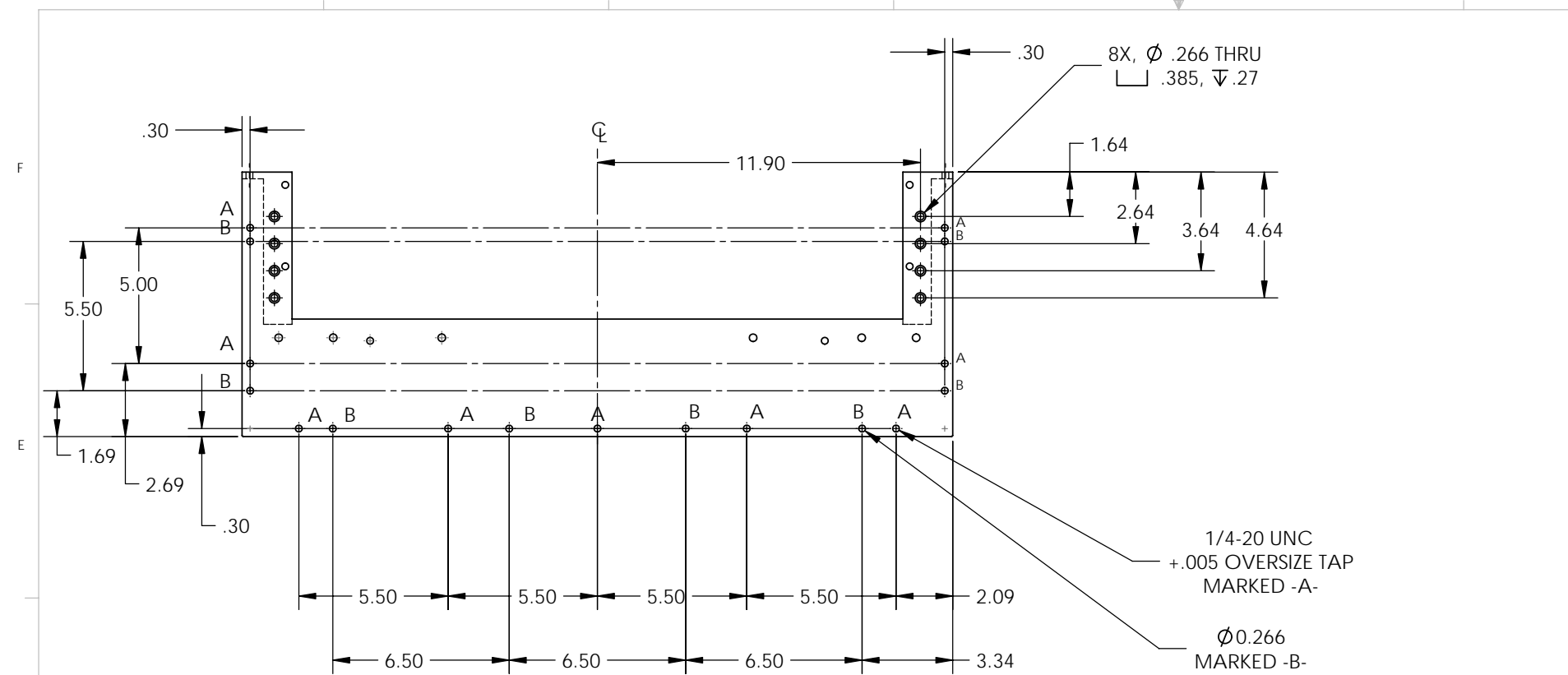


REV.	DATE	DCN #	DRAWING TREE #
A	28 MAR 2006	E060057-00	E060059-A



**NOTES: (UNLESS OTHERWISE SPECIFIED)**

- DO NOT SCALE FROM DRAWING.
- REMOVE ALL SHARP EDGES. R.02 MIN.
- ALL MACHINING FLUIDS SHALL BE WATER SOLUBLE AND FREE OF SULFUR, CHLORINE AND SILICONE.
- PART MAY BE CONSTRUCTED OF THREE PIECES BOLTED TOGETHER WITH SAME OUTSIDE GEOMETR. I.e. MAIN SECTION 3/8" THICK PLATE

⊗ SCRIBE, ENGRAVE OR MECHANICALLY STAMP DRAWING (NO INKS OR DYES) PART NUMBER, REVISION ON NOTED SURFACE OF PART FOLLOWED ON THE NEXT LINE WITH A THREE DIGIT SERIAL NUMBER. SERIAL NUMBERS START AT 001 FOR THE FIRST ARTICLE AND PROCEED CONSECUTIVELY. USE 12" HIGH CHARACTERS. UNLESS THE SIZE OF THE PART DICTATES SMALL CHARACTERS. A VIBRATORY TOOL MAY BE USED. EXAMPLE: D050050-A S/N 001

**PARTS LIST**

DIMENSIONS ARE IN INCHES

TOLERANCES:  
XX  $\pm$  0.01  
XXX  $\pm$  0.005  
ANGULAR  $\pm$  0.5°

MATERIAL: 6061-T6-AL

FINISH: 32  $\mu$  inch

DRAWN	CHECKED	APPROVED	NAME	DATE	SIZE	DWG. NO.	REV.
			C. TORRE	10 MAY 2005		D050047	A
			R. JONES	10 MAY 2005			

SCALE: 1:4 PROJECTION:  $\square$  SHEET 1 OF 1

CALIFORNIA INSTITUTE OF TECHNOLOGY  
MASSACHUSETTS INSTITUTE OF TECHNOLOGY  
IGR, GLASGOW UNIVERSITY GEO 600 GROUP

SYSTEM: ADVANCED LIGO  
SUB-SYSTEM: SUS  
NEXT ASSY: LOWER STR, D040516  
PART NAME: ETM LOWER STR ASSEMBLY RIG