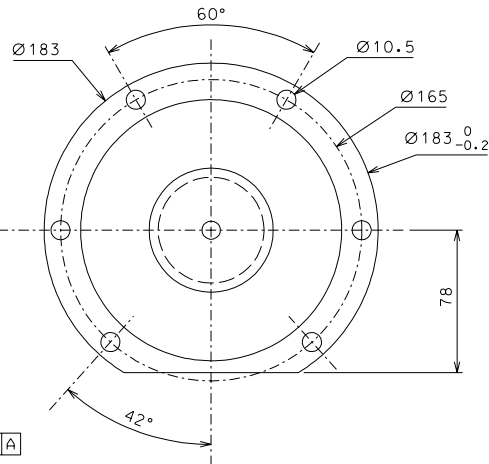
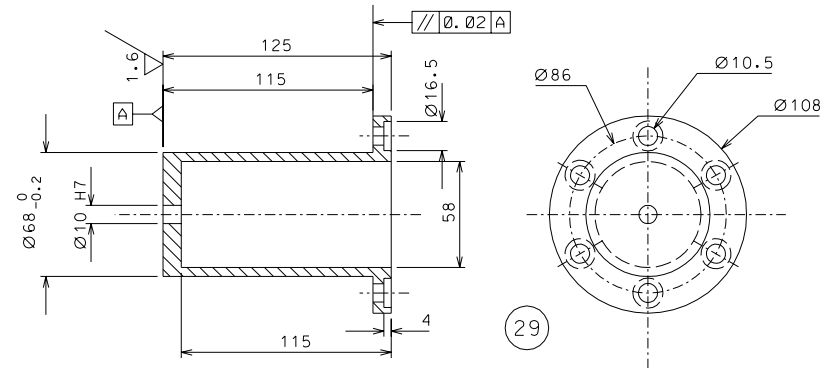


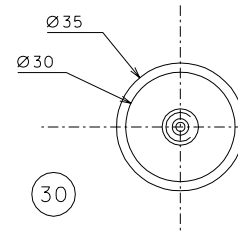
67



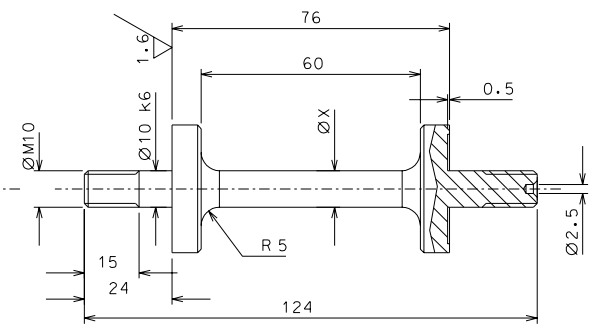
66



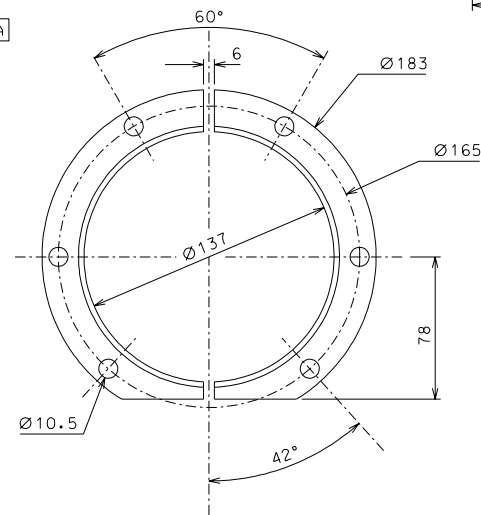
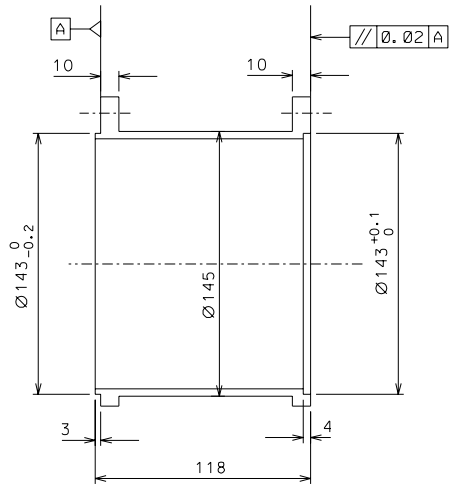
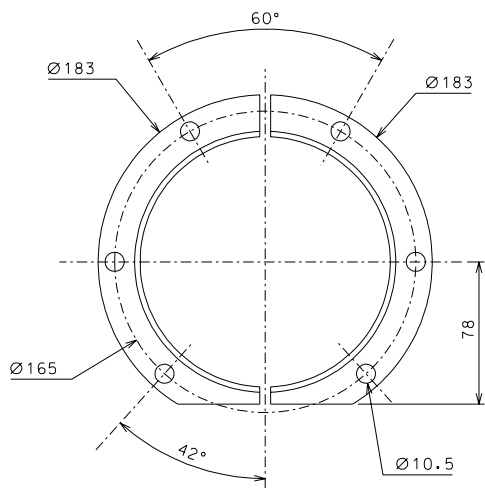
29



30



X = 9.5 reference for 1000 Kg load, adjust according to required load



NOTE: The details 93 and 30 must be aligned and slip fit with the details 71, 67, 29

ref.	note	date	signature
modifications			
67	2	AISI 304	1/2
66	2	AISI 304	1/2
30	4	maraging	1/1
29	2	AISI 304	1/2
ref.	pieces	mat. and treatments	scale

General machining tolerances UNI 5307-63								
Dimensions	< 6	> 6-30	> 30-120	> 120-315	> 315-1000	> 1000-2000	> 2000-4000	> 4000
Linear Toli.	± 0,1	± 0,2	± 0,3	± 0,5	± 0,8	± 1,2	± 2	± 3
angular Toli.	± 1'	± 30'	± 20'	± 10' referred to the shortest side				

designed for	R.De Salvo		
draw. by	G. Gennaro-PROMEC		
date	8-01-05	scale	1/2
title	HAM-OPTICAL BENCH		
	INVERTED PENDULUM		
date ¹ from	107	A	2