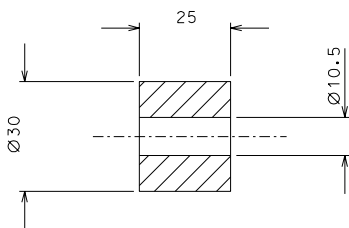
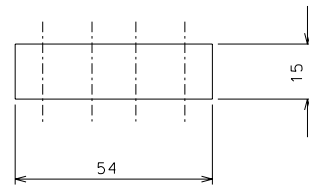
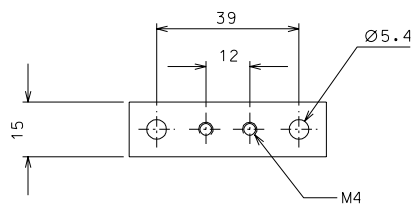


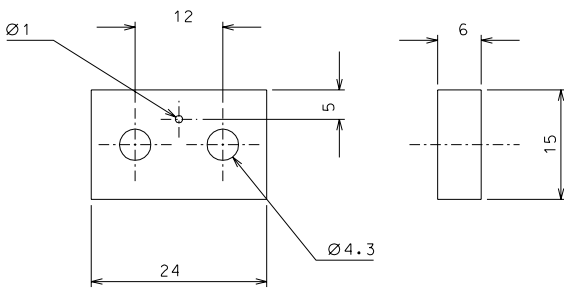
69



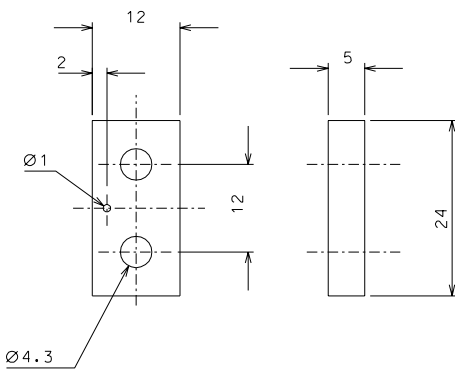
70



57



58



59

ref.	note	date	signature
modifications			
70	8 EN 6082	1/1	
69	4 EN 6082	1/1	
59	4 AISI 304	2/1	
58	4 AISI 304	2/1	
57	4 AISI 304	1/1	
ref.	pieces	mat. and treatments	scale

General machining tolerances UNI 5307-63								
Dimensions	< 6	>= 6-30	>= 30-120	>= 120-315	>= 315-1000	>= 1000-2000	>= 2000-4000	>= 4000
Linear Toli.	± 0.1	± 0.2	± 0.3	± 0.5	± 0.8	± 1.2	± 2	± 3
angular Toli.	± 1'	± 30'	± 20'	± 10'				

designed for: **R.De Salvo**  
 draw. by: **G. Gennaro-PROMEC**  
 date: **13-01-05** scale: **1/1**  
 title: **HAM-OPTICAL BENCH**  
**MOTORIZED VERTICAL SPRING**  
 LIGO PROJECT  
 LIGO-D050141-01-D  
 detail from: **109** scale: **A 2**