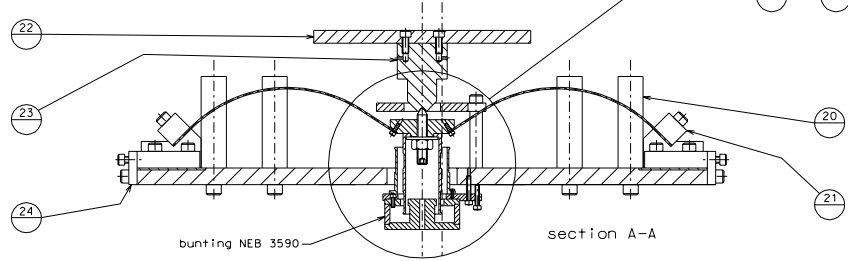
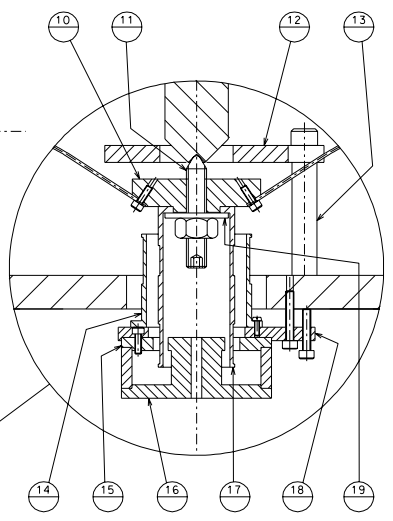
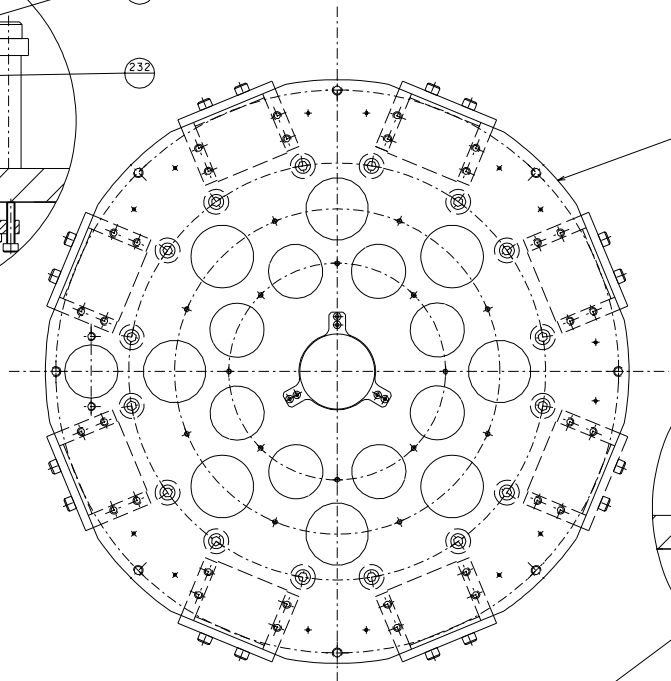
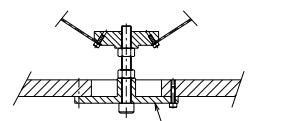


section B-B

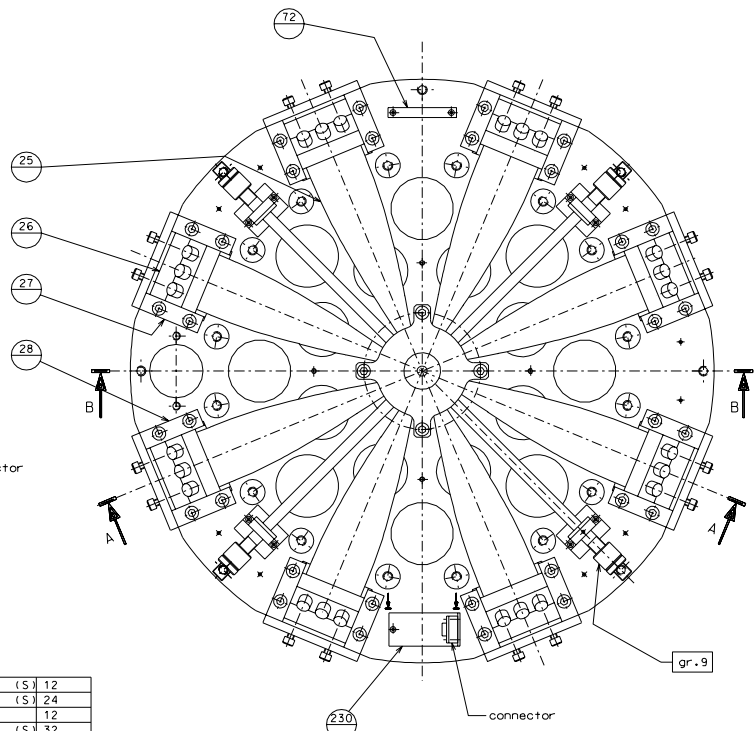


bunting NEB 3590

section A-A



Mounting tool



Note: Press fit of 10 into 17 after wiring disassemble yoke 16 to reach screw. Use only special wrench to lock unlock nut.
 Note: Mount connector on opposite side on half of the filters to allow for cabling from the side of the spring box



Accu-Glass 9D-PKS 10440
 9 pin sub-D female connector
 on stand

Connection convention:

- 1 LVDT drive -
- 6 LVDT drive +
- 2 LVDT sense -
- 7 LVDT sense +
- 3-4 act. coil -
- 8-9 act. coil +
- 5 shields

detail	type	n°piec.
14-18	flat head M3x8 (S)	12
18-9	tommy head M5x30 (S)	24
18-15	tommy head M4x12 (S)	12
25-10	tommy head M4x12 (S)	32
12-13-9	tommy head M10x25 (S)	16
22-23	tommy head M8x20 (S)	12
9-20	tommy head M12x40 (S)	64
21-26	tommy head M10x40 (S)	96
27-28-9	tommy head M10x35 (S)	128
24-26	tommy head M8x20 (S)	64
24-9	tommy head M10x25 (S)	64

Screw's table

ref.	date	signature
changed position connector	25-05-06	
added connection and details	11-05-06	
modified detail 9	06-03-06	
modified ref. detail 22	06-02-06	

ref.	date	signature			
21	123	blade clamp plate	gr.9	167	balance
20	124	filler's struct. column	232	168	drilled screw
19	124	washer	231	168	spacer pipe
18	125	coil adjust. plate	230	124	support connector
17	126	LVDT/act. coils	77	121	mounting tool
16	126	magnet yoke back	72	123	electrical conn. bar
15	125	magnet yoke front	28	123	guide right
14	125	LVDT coil	27	123	guide left
13	122	end-stop column	26	123	blade clamp
12	124	end-stop plate	25	120	GAS blade
11	124	central screw	24	123	tuning pusher
10	168	blade central support	23	122	connection nose
9	121	filter main platform	22	207	connection table

designed by: **R.De Salvo**
 G. Gennaro-PROMEC
 date: 10-12-04
LIGO-O051106-04-D
 HAM-OPTICAL BENCH
 FILTER GR. 1
 page: 1/3
 A 1