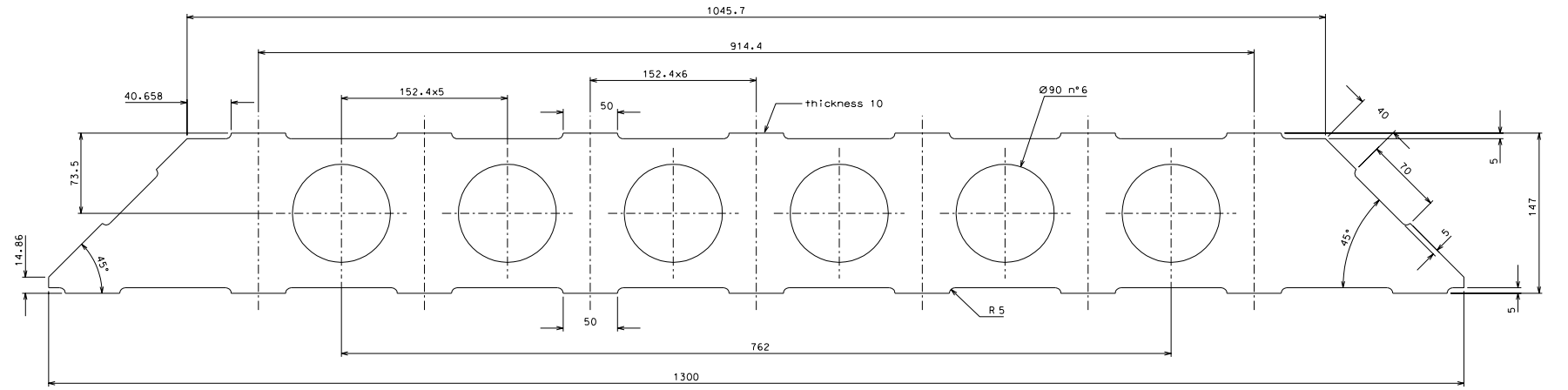
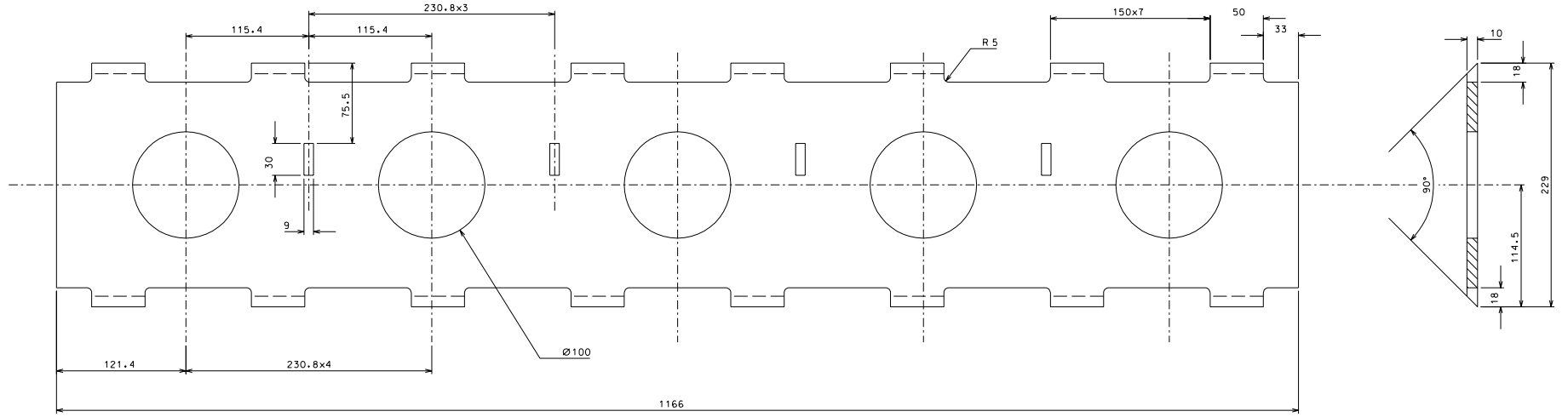


1.3



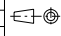
1.2



1.3	2	EN 5083 H111	1/2				
1.2	2	EN 5083 H111	1/2				
ref.	pieces	mat. and treatments	serie	ref.	pieces	mat. and treatments	serie

General machining tolerances UNI 5107-85							
dimension	< 4	4-30	30-100	100-300	300-1000	1000-4000	> 4000
linear tol.	± 0.1	± 0.2	± 0.3	± 0.4	± 0.7	± 1.2	± 2
angular tol.	± 1'	± 30'	± 20'	± 10'	related to the shortest side		

modified edge of part 1.2	04-05-06		
ref.	date	signature	
modifications			


LIGO PROJECT
 designed by **R. De Salvo**
 drawn by **G. Gennaro-PROMECH**
 date **20-12-04** scale **1/2**
HAM-OPTICAL BENCH
 DETAILS BASE
 drawing number **LIGO-D051115-01-D**
 sheet number **114** of **A 1**