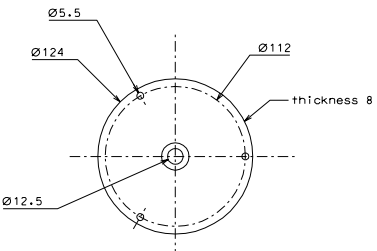
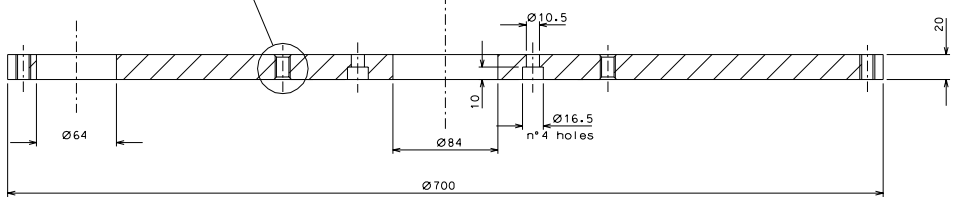
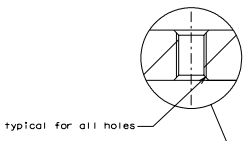


9



Note: All holes are threaded through  
Nota: tutti i fori sono filettati passanti!

77

9		added and modified holes		4-10-05		
rev.	date	signature				
modifications						
77	4	AISI 304	1/2			
9	4	AISI 304 brama	1/2			
ref.	pieces	mat. and treatments	scale	ref. pieces	mat. and treatments	
General machining tolerances UNI 5301-43						
Dimensione	< 6	6-30	30-120	120-315	315-1000	
Tolleranza	± 0.1	± 0.15	± 0.2	± 0.3	± 0.5	
Superficie	± 0.1	± 0.15	± 0.2	± 0.3	± 0.5	
designed by R.De Salvo						
drawn by G. Gennaro-PROMECC						
date 29-12-04 scale 1/2						
Title HAM-OPTICAL BENCH PLATFORM				LIG0-0051121-00-D		
				sheet	106	
				of	A 1	