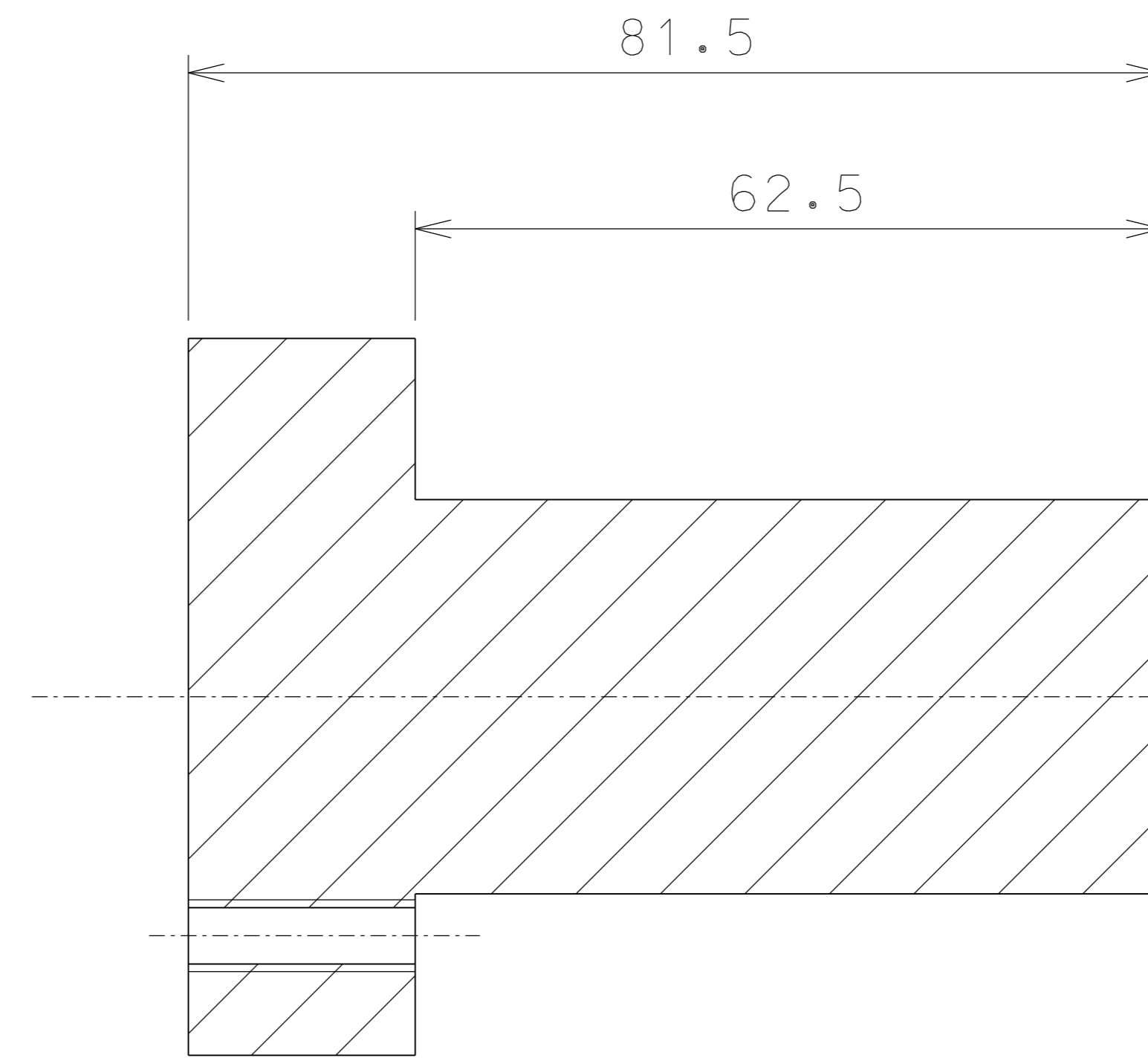
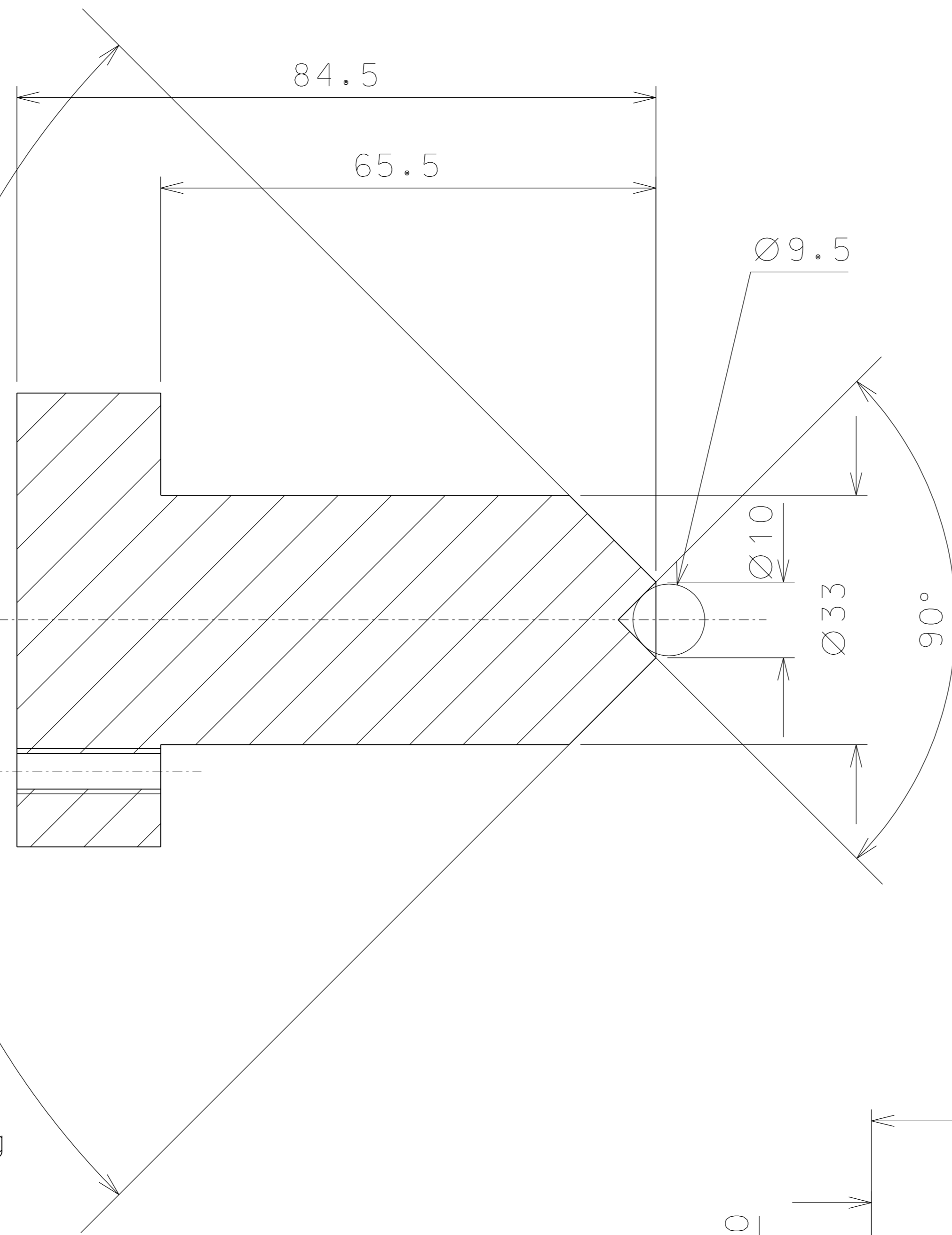


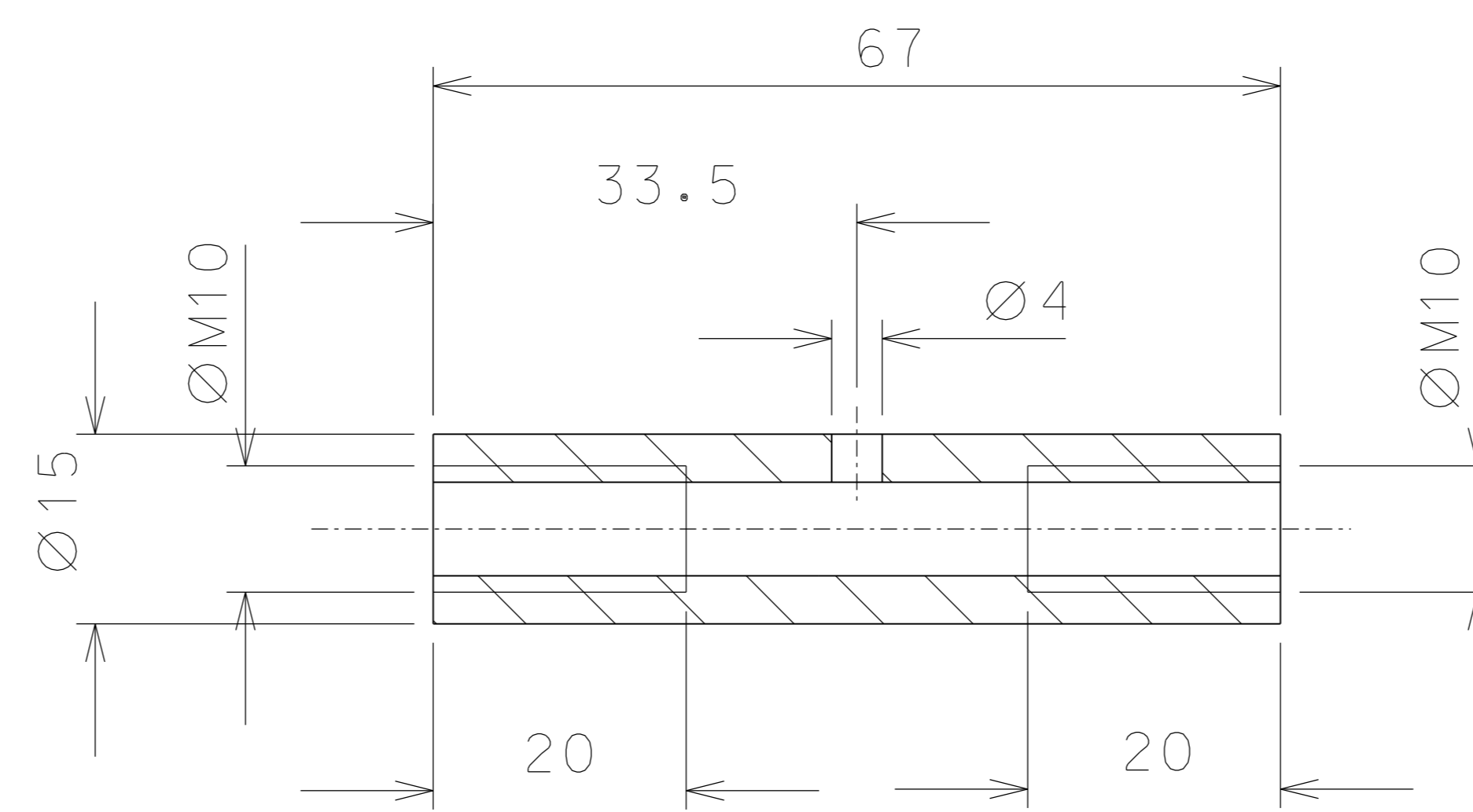
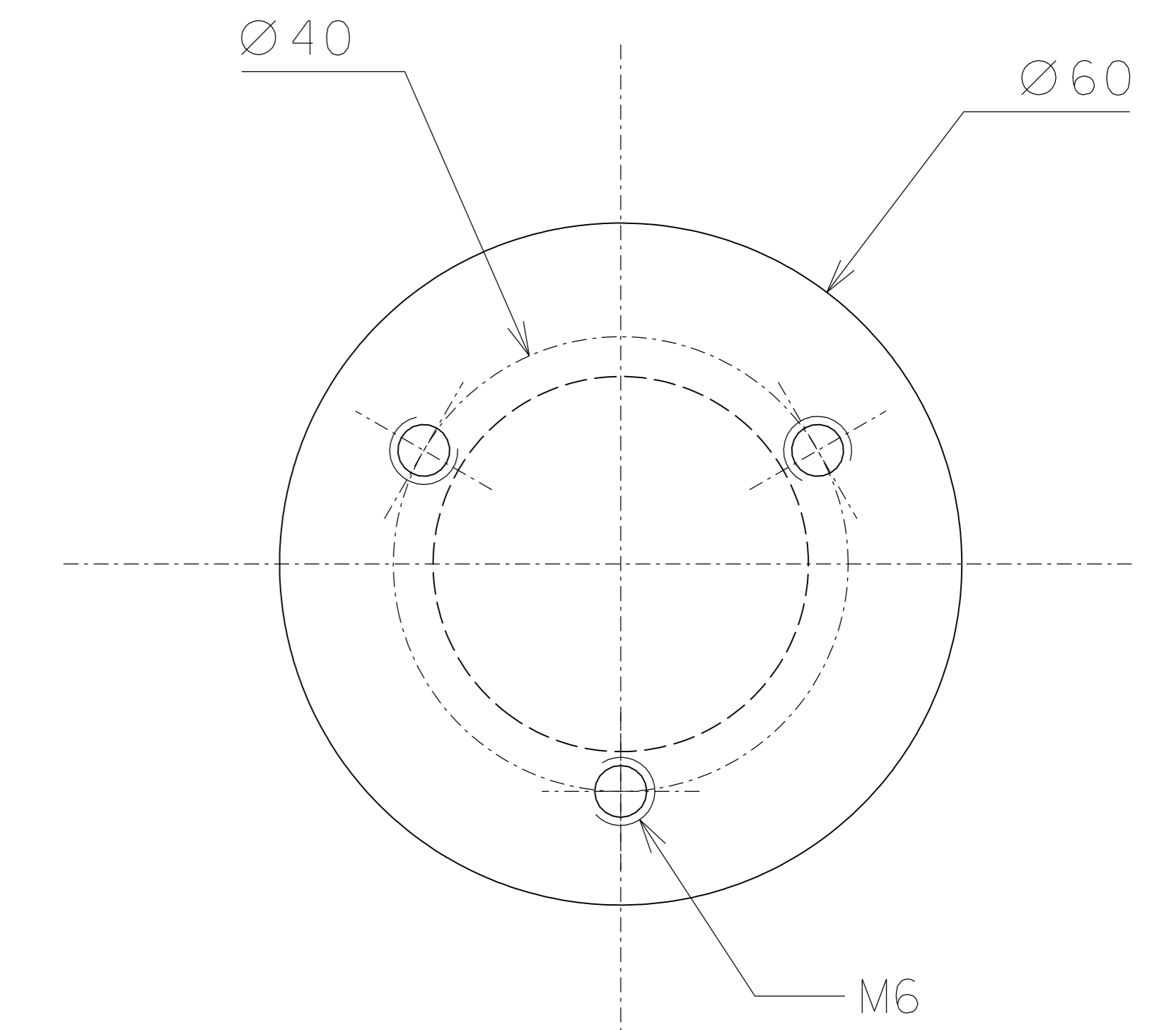
23

nickel flashing

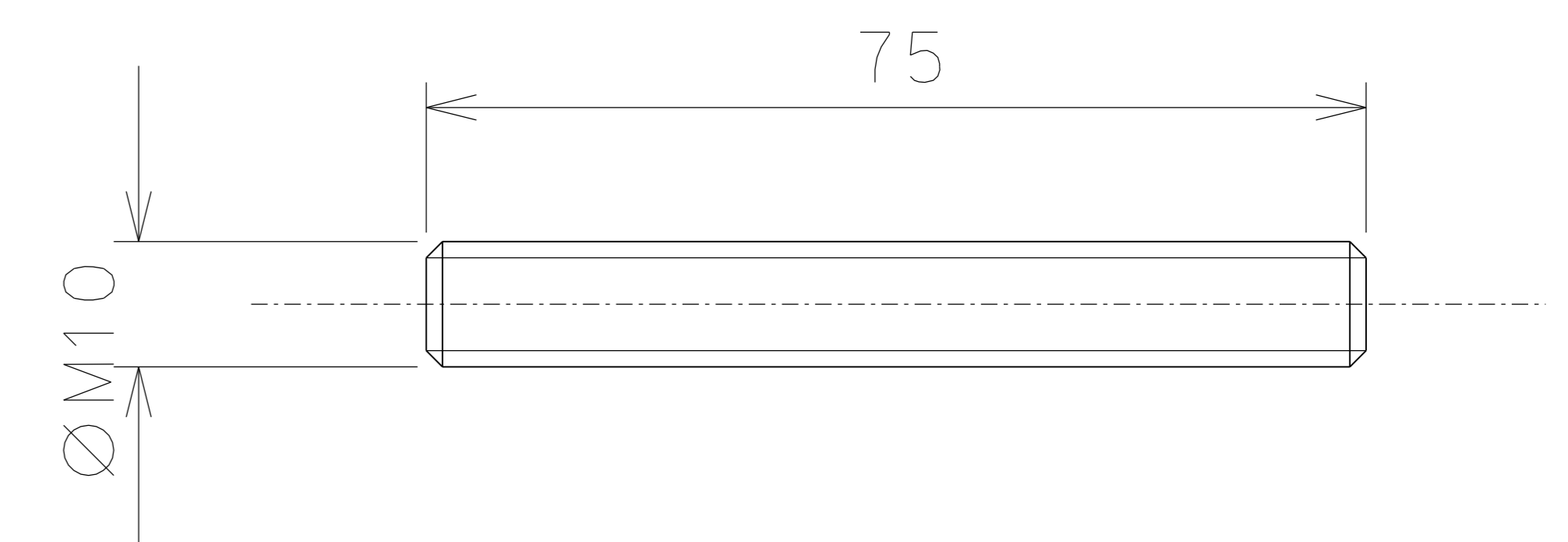


23.1

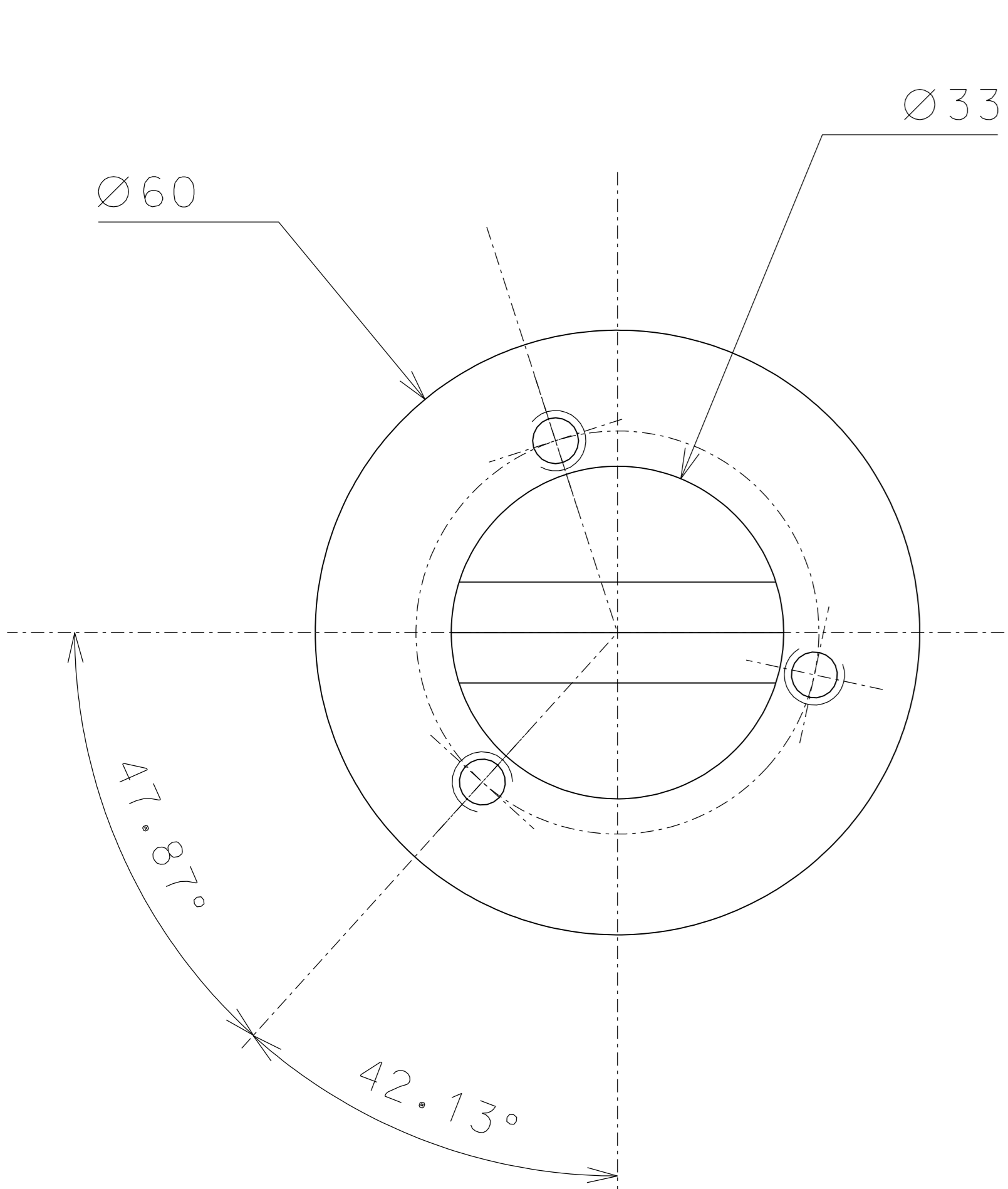
nickel flashing



13

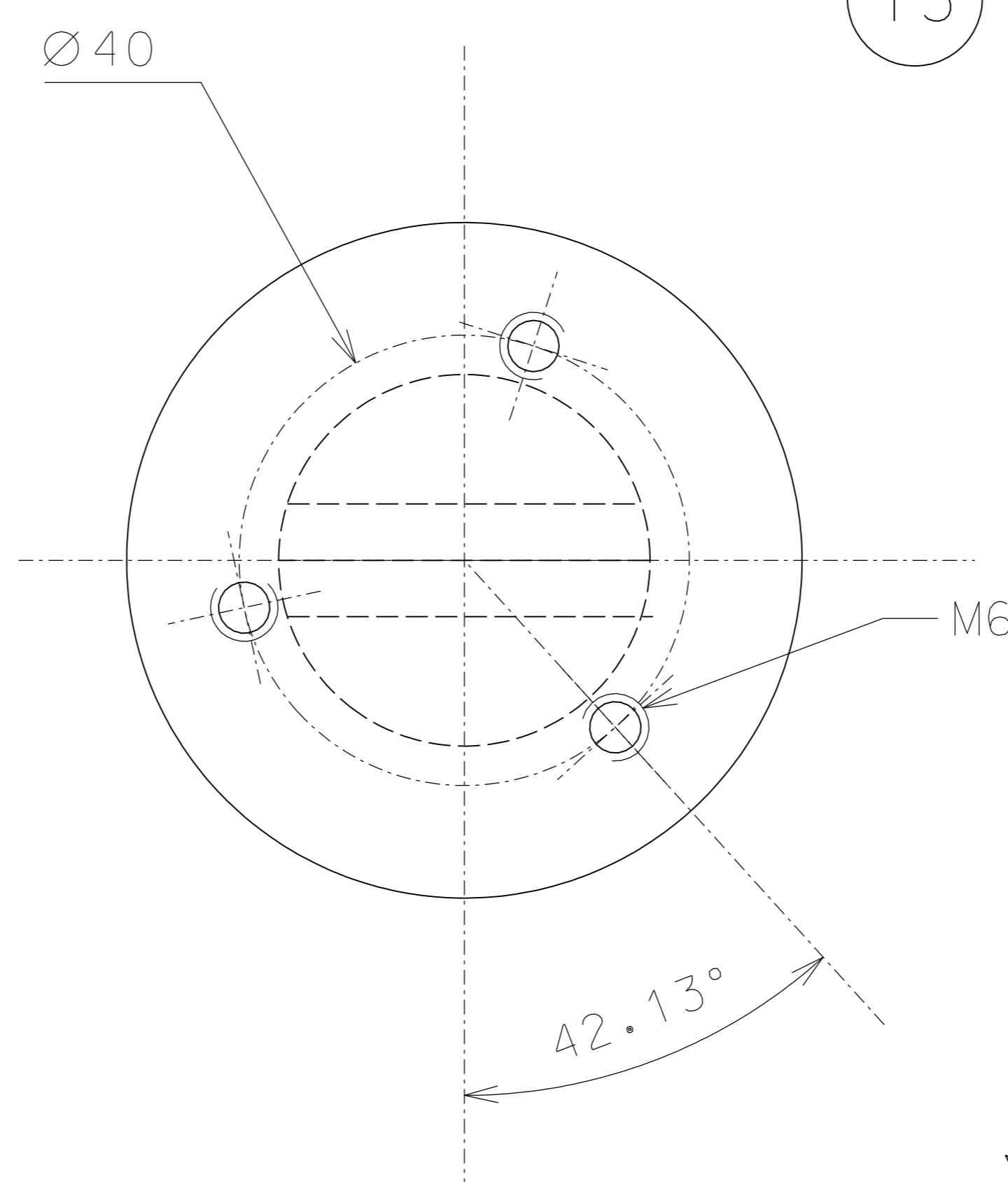
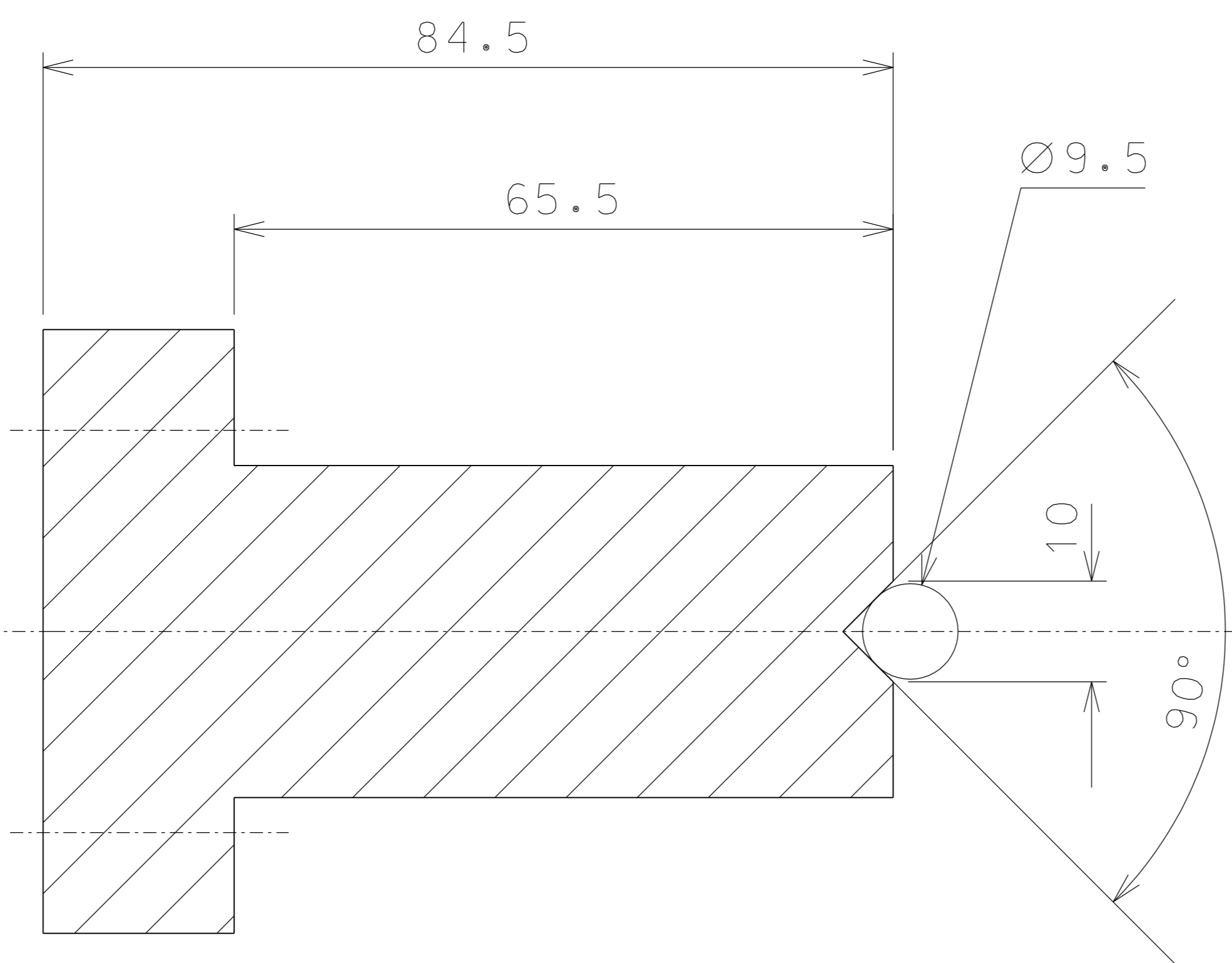


288



23.2

nickel flashing



AS IS

		new change of parts 23-23.1-23.2	15-11-06	
		modified parts 23 and 23.2	03-11-06	
		added part 288 and modif. 13	02-10-06	
		modified all parts	19-06-06	
ref.		note	date	signature
modifications				
288	4	AISI 316	1/1	
23.2	1	C 40 hardened	1/1	
23.1	2	C 40 hardened	1/1	
23	1	C 40 hardened	1/1	
13	16	AISI 304	1/1	
ref.	pieces	mat. and treatments	scale	
ref.	pieces	mat. and treatments	scale	

General machining tolerances UNI 5307-63							
Dimensions	< 6	>6-30	>30-120	>120-315	>315-1000	>1000-2000	>2000-4000
linear Toll.	±0.1	±0.2	±0.3	±0.5	±0.8	±1.2	±2
angular Toll.	±1	±30'	±20'	±10' referred to the shortest side			
designed for		R.De Salvo					
draw. by		G.Gennaro-PROMECA					
date		2-01-05		scale		1/1	
title		HAM-OPTICAL BENCH					
		LIGO-D051122-06-D					
DETAILS FILTER		detail from		106		A 2	