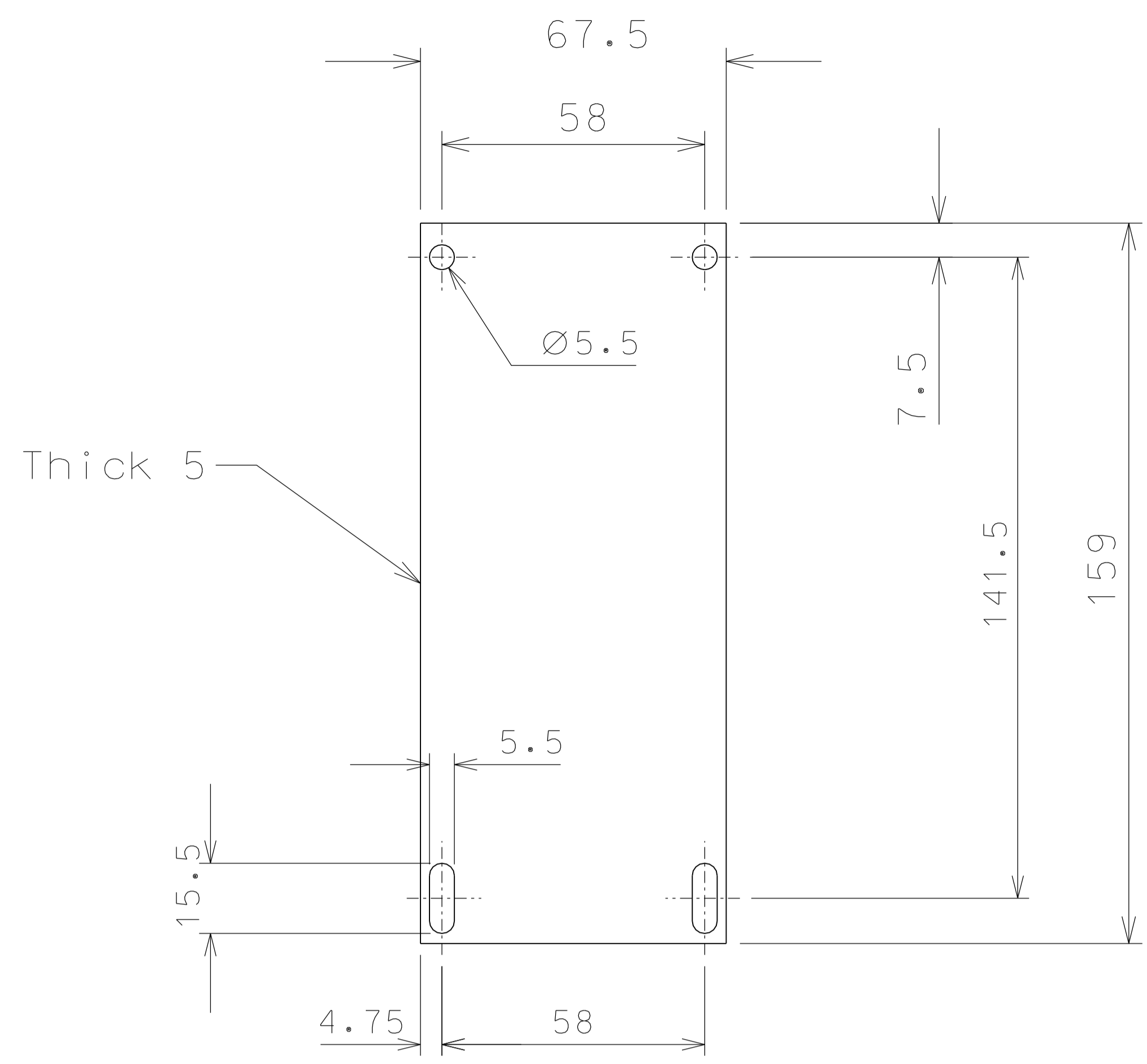
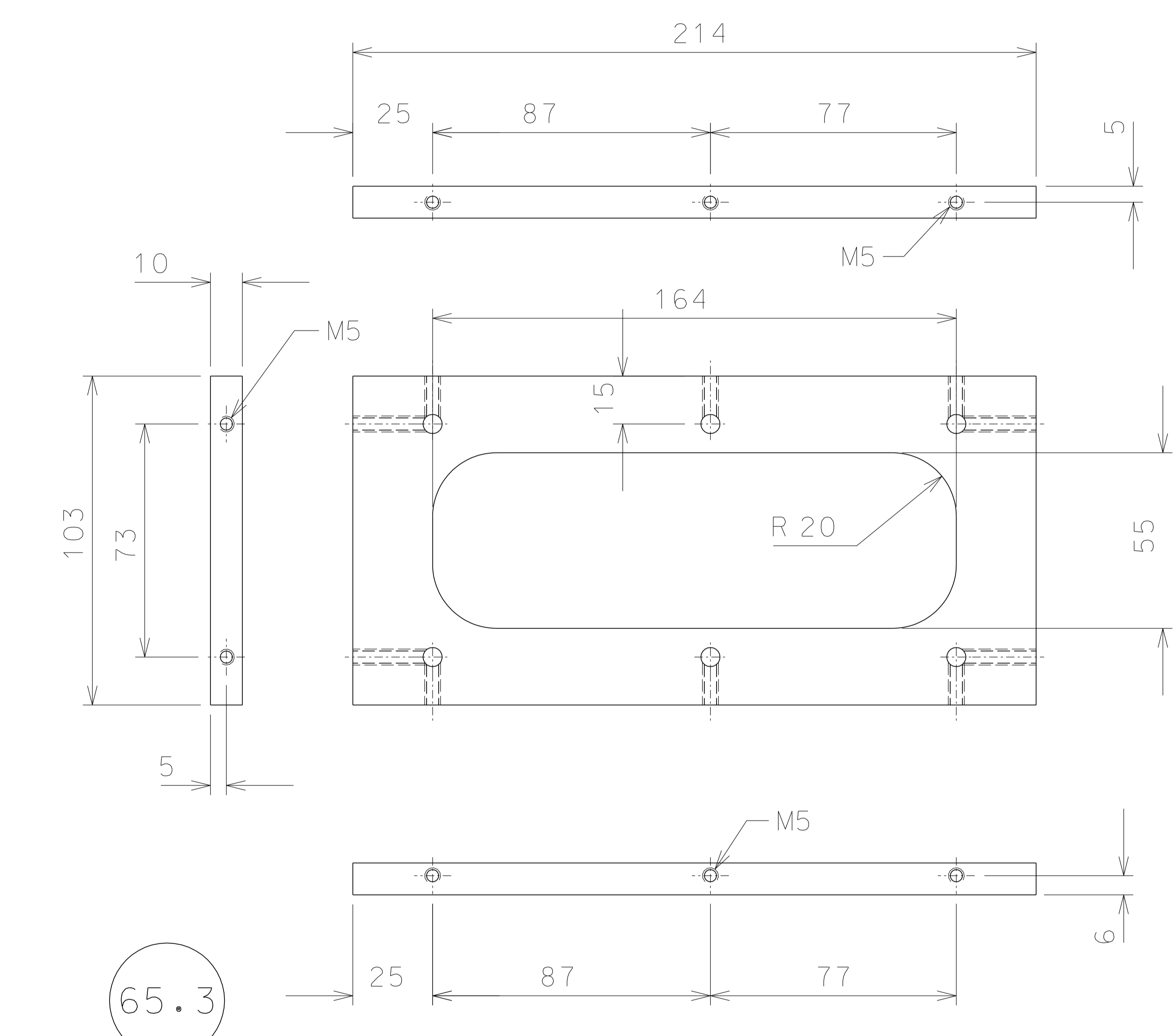


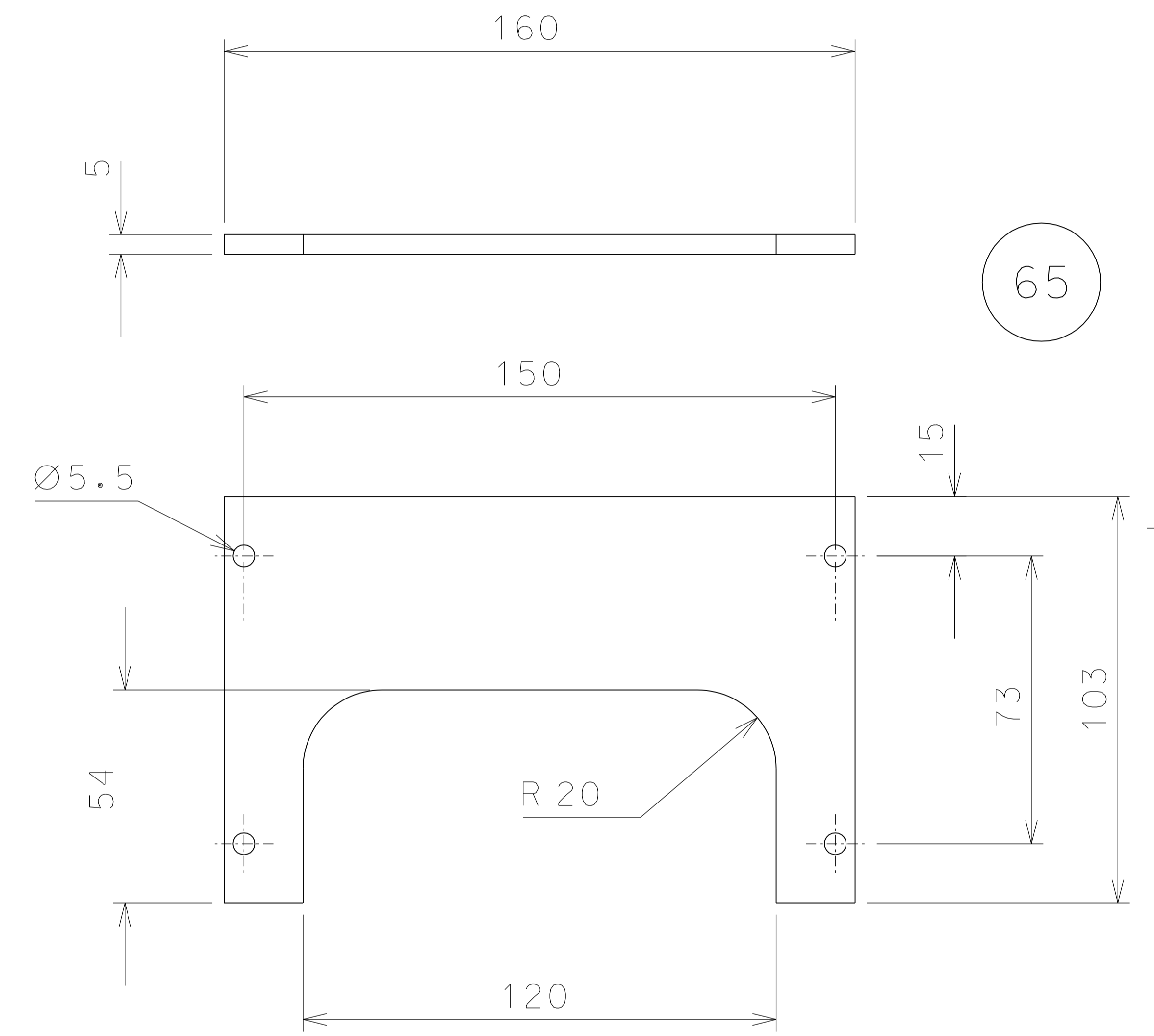
65.2



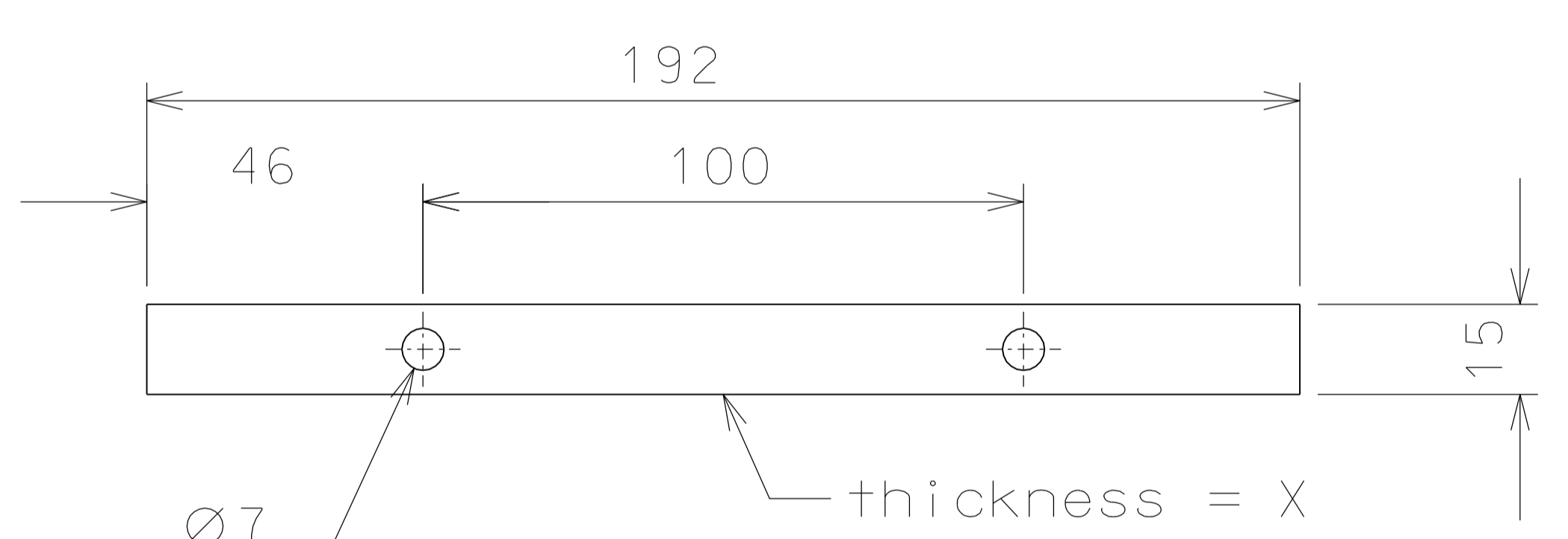
68



65.3

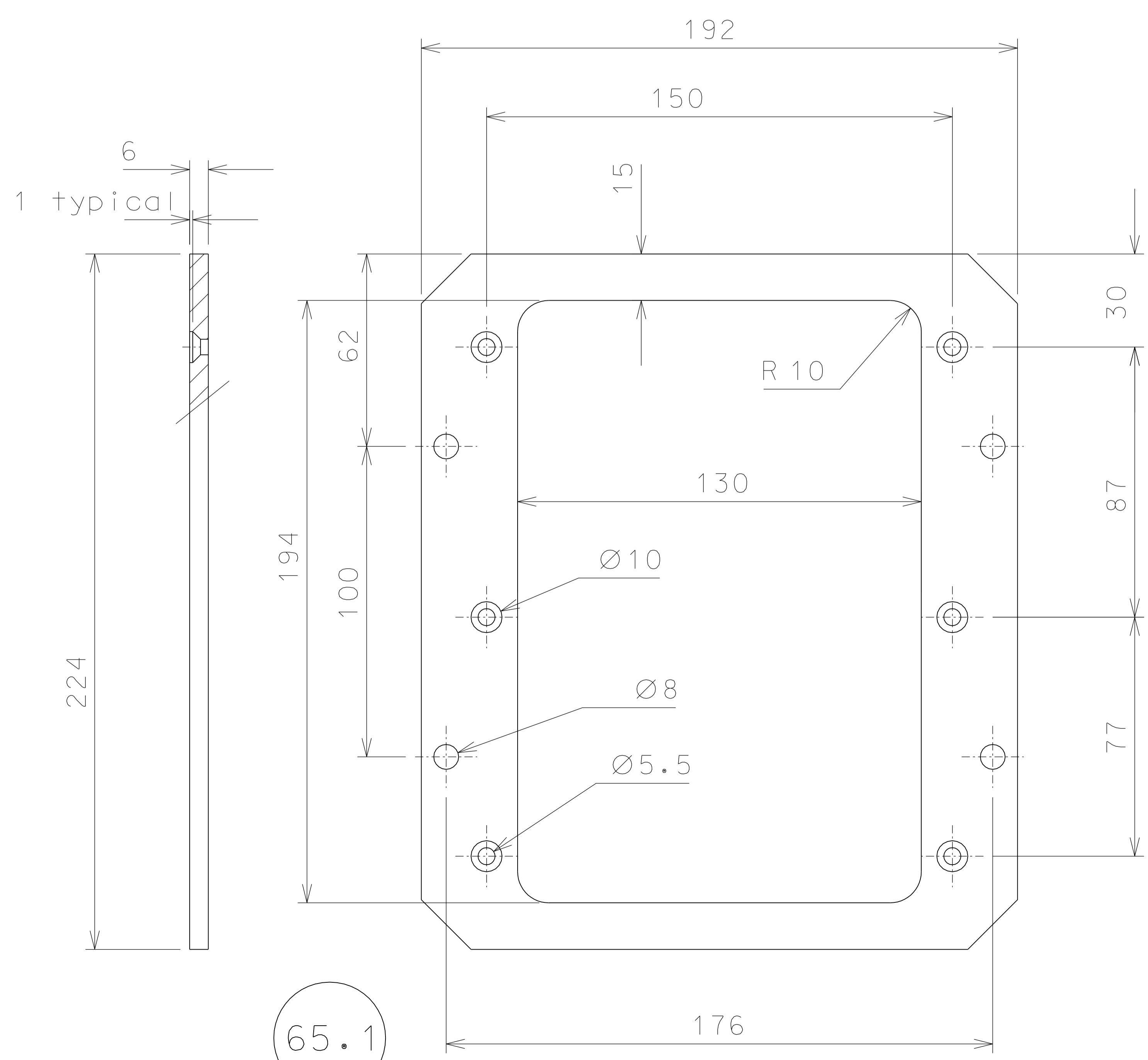


65



- X = 4 n° 8 pieces
- X = 2 n° 8 pieces
- X = 1 n° 8 pieces
- X = 0.5 n° 8 pieces

65.4



65.1

		added part 65.4		05-11-06			
		modified part 68		26-09-06			
		replaced the holes on the base		30-03-06			
rif.		note		data		firme	
modifiche							
65.4	X	EN 6082	1/2				
65.3	4	EN 6082	1/2				
65.2	4	EN 6082	1/2				
65.1	12	EN 6082	1/2				
65	8	EN 6082	1/2	68	8	AISI 304	1/2
ref.	pieces	mat. and treatments	scale	ref.	pieces	mat. and treatments	scale

General machining tolerances UNI 5307-63											
Dimensions	< 6	> 6-30	> 30-120	> 120-315	> 315-1000	> 1000-2000	> 2000-4000	> 4000			
linear Toll.	± 0.1	± 0.2	± 0.3	± 0.5	± 0.8	± 1.2	± 2	± 3			
angular Toll.	± 1	± 30'	± 20'	± 10' referred to the shortest side							
				designed for				R.De Salvo			
				draw. by				G.Gennaro-PROMEC			
title <b>HAM-OPTICAL BENCH</b> DETAILS LVDT ACTUATOR				date		04-09-06		scale		1/2	
				ref. from				105		A 2	