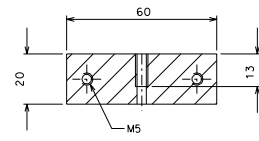
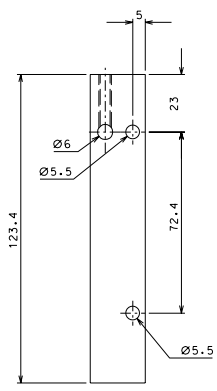
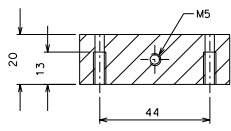


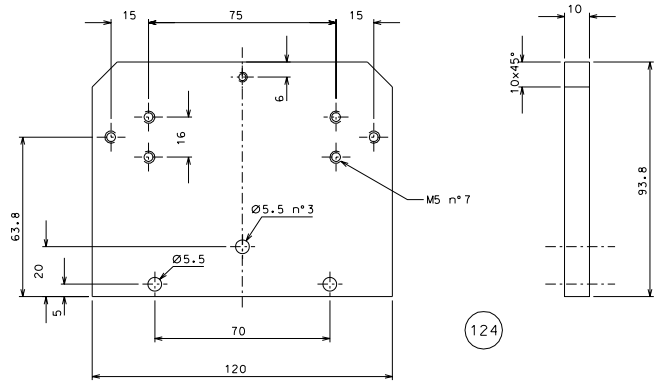
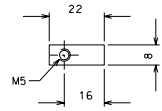
272



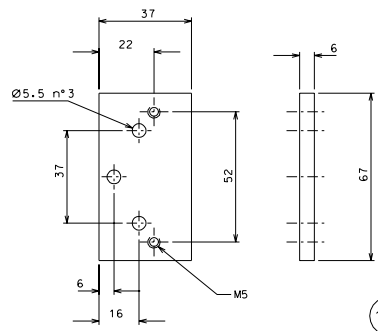
275



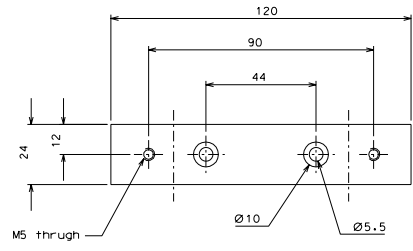
273



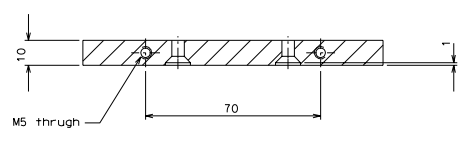
124



129



274



| | | | |
|------------------|------|-----------|---------------|
| total changement | | 06-09-06 | |
| ref. | date | signature | |
| modifications | | | |
| 274 | 4 | EN 6082 | |
| 273 | 8 | EN 6082 | |
| 272 | 4 | EN 6082 | |
| 129 | 4 | EN 6082 | |
| 124 | 4 | EN 6082 | |
| ref. | date | signature | 275 4 EN 6082 |

| | | | |
|--|-------|--------|--------|
| General machining tolerances UNI 5307-63 | | | |
| Dimensione | < 6 | 6-30 | 30-120 |
| Tolleranza | ± 0.1 | ± 0.15 | ± 0.2 |
| Superficie | ± 0.1 | ± 0.15 | ± 0.2 |
| designed for R.De Salvo | | | |
| LIGO PROJECT | | | |
| 06-09-06 | | | |
| HAM-OPTICAL BENCH | | | |
| ACTUATOR | | | |
| 1/1 | | | |
| 111 | | | |
| A 1 | | | |