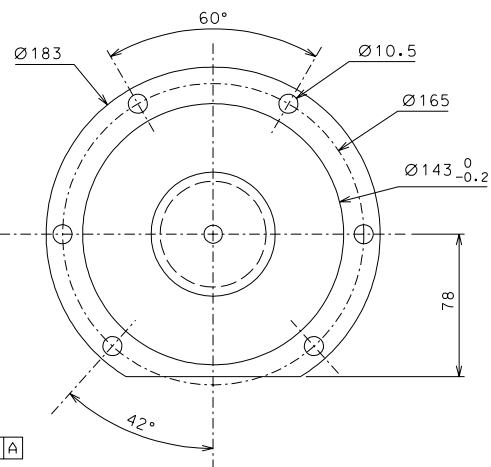
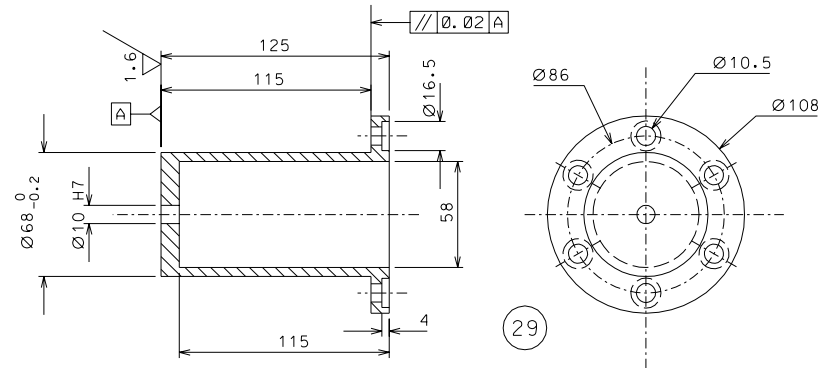


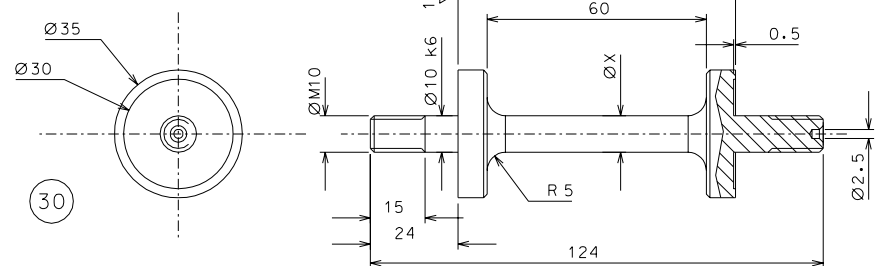
67



66

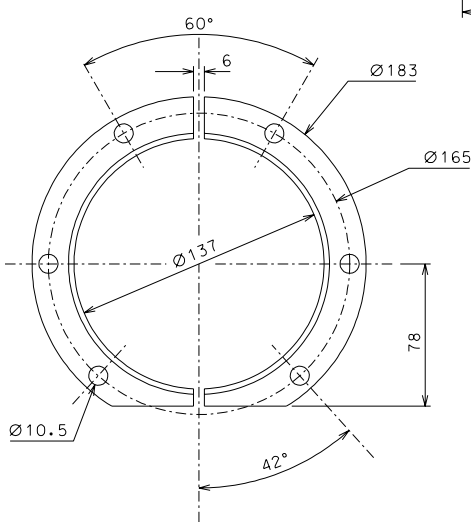
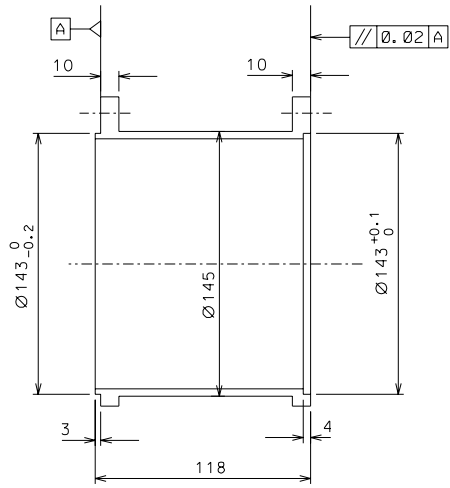
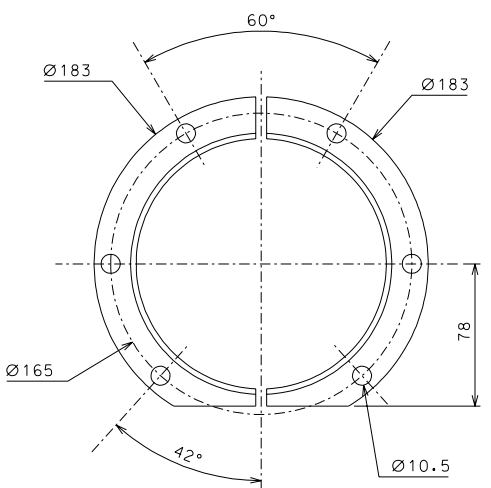


29



30

X = 9.5 reference for 1000 Kg load, adjust according to required load



modified dimension part 67				07-06-06	
ref.	note	date	signature		
modifications					
67	2	AISI 304	1/2		
66	2	AISI 304	1/2		
30	4	maraging	1/1		
29	2	AISI 304	1/2		
ref.	pieces	mat. and treatments	scale	ref.	pieces

General machining tolerances UNI 5307-63									
Dimensions	< 6	> 6-30	> 30-120	> 120-315	> 315-1000	> 1000-2000	> 2000-4000	> 4000	
linear Toli.	± 0,1	± 0,2	± 0,3	± 0,5	± 0,8	± 1,2	± 2	± 3	
angular Toli.	± 1'	± 30'	± 20'	± 10' referred to the shortest side					
designed for		R.De Salvo							
draw. by		G. Gennaro-PROMEC							
date		8-01-05		scale		1/2			
title		HAM-OPTICAL BENCH					LIGO-D051135-01-D		
INVERTED PENDULUM		date ¹ from		107		A 2			

NOTE: The details 93 and 30 must be aligned and slip fit with the details 71, 67, 29