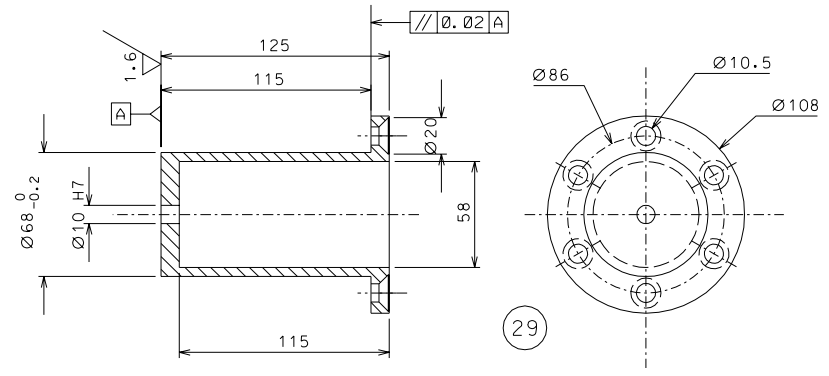
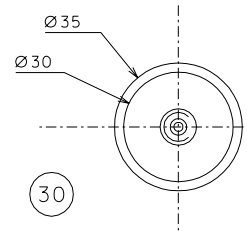


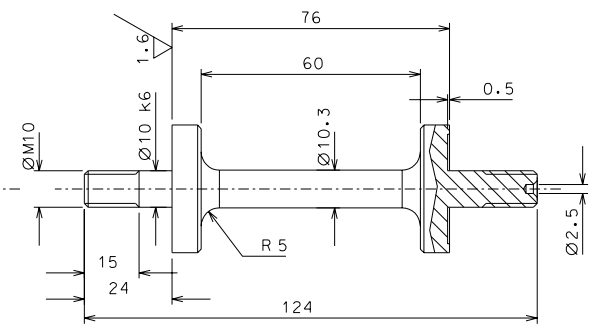
67



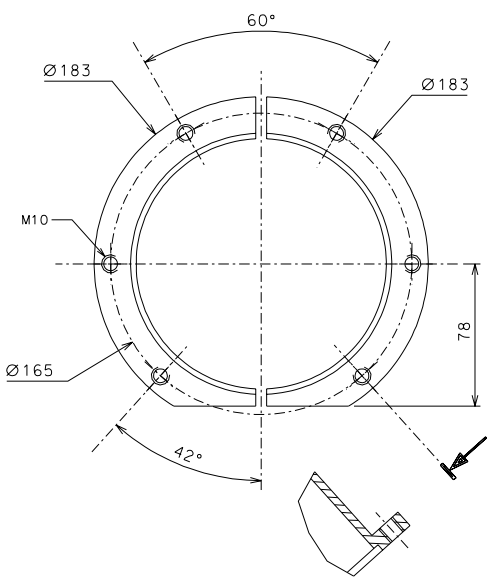
29



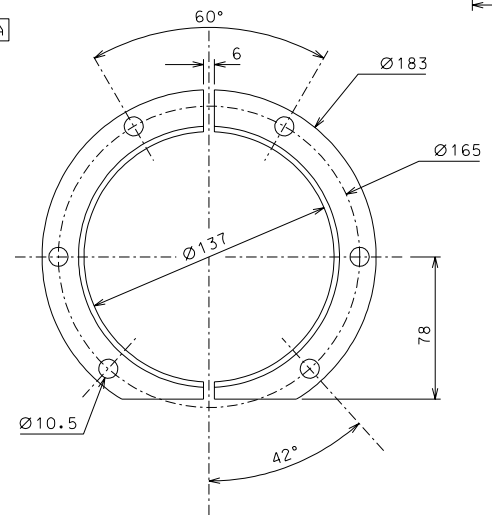
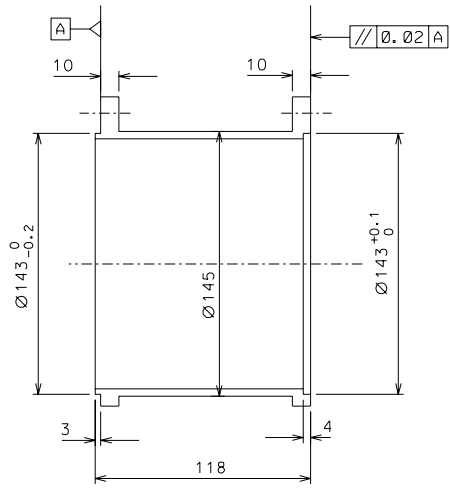
30



X = 9.5 reference for 1000 Kg load, adjust according to required load



66



NOTE: The details 93 and 30 must be aligned and slip fit with the details 71, 67, 29

modified holes part 29-30-66-67		18-07-06
modified dimension part 67		07-06-06
ref.	note	date signature
modifications		
67	2	AISI 304 1/2
66	2	AISI 304 1/2
30	4	maraging 1/1
29	2	AISI 304 1/2
ref.	pieces	mat. and treatments scale

General machining tolerances UNI 5307-63								
Dimensions	< 6	> 6-30	> 30-120	> 120-315	> 315-1000	> 1000-2000	> 2000-4000	> 4000
Linear Toli.	± 0,1	± 0,2	± 0,3	± 0,5	± 0,8	± 1,2	± 2	± 3
angular Toli.	± 1'	± 30'	± 20'	± 10' referred to the shortest side				
designed for		R.De Salvo						
draw. by		G. Gennaro-PROMEC						
date		8-01-05		scale		1/2		
title		HAM-OPTICAL BENCH						
LIGO PROJECT		LIGO-D051135-02-D						
INVERTED PENDULUM		date ¹ from		107		A 2		