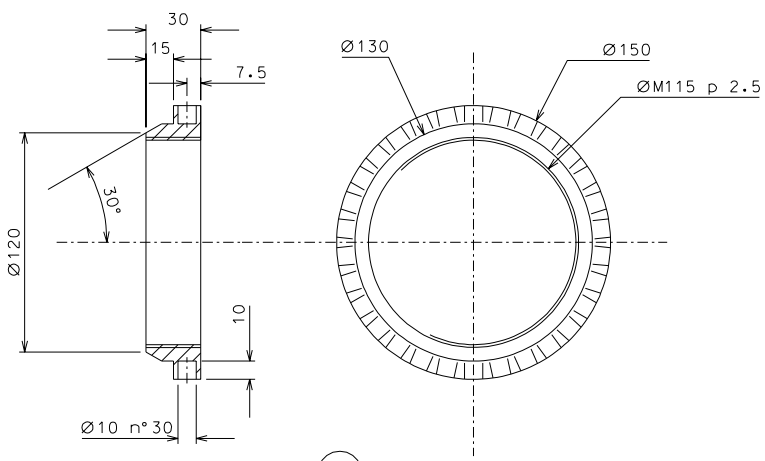
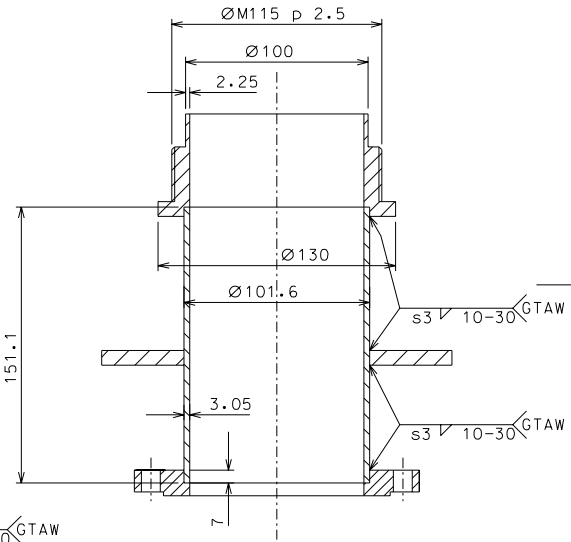
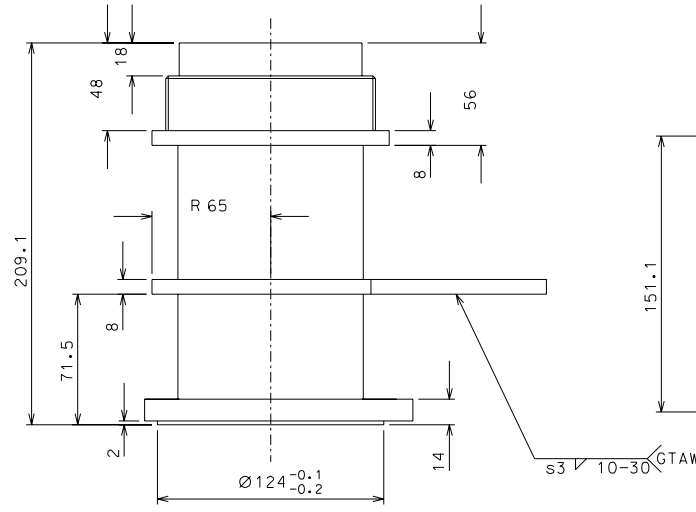


32

71



33

NOTE: The details 93 and 30 must be aligned and slip fit with the details 71, 67, 29

changed material part 33		17-08-06	
modified part 32		19-06-06	
added dimension		07-04-06	
ref.	note	date	signature
modifications			
71	2	AISI 304	1/2
33	4	AISI 304	1/2
32	4	AISI 304 L	1/2
ref.	pieces	mat. and treatments	scale

General machining tolerances UNI 5307-63								
Dimensions	< 6	= 6-30	> 30-120	> 120-315	> 315-1000	> 1000-2000	> 2000-4000	> 4000
Linear Toli.	± 0.1	± 0.2	± 0.3	± 0.5	± 0.8	± 1.2	± 2	± 3
angular Toli.	± 1'	± 30'	± 20'	referred to the shortest side				
designed for						R.De Salvo		
LIGO PROJECT						draw. by G. Gennaro-PROME		
title						date		
HAM-OPTICAL BENCH						9-01-05		
INVERTED PENDULUM						scale		
						1/2		
						LIGO-D051138-03-D		
						detail		
						107		
						A 2		