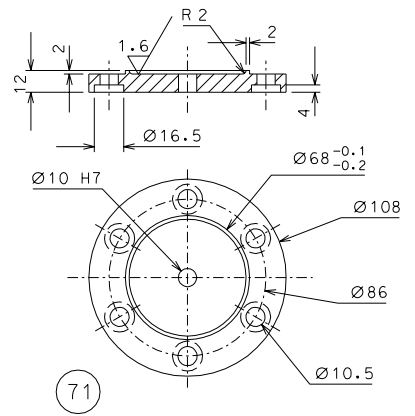
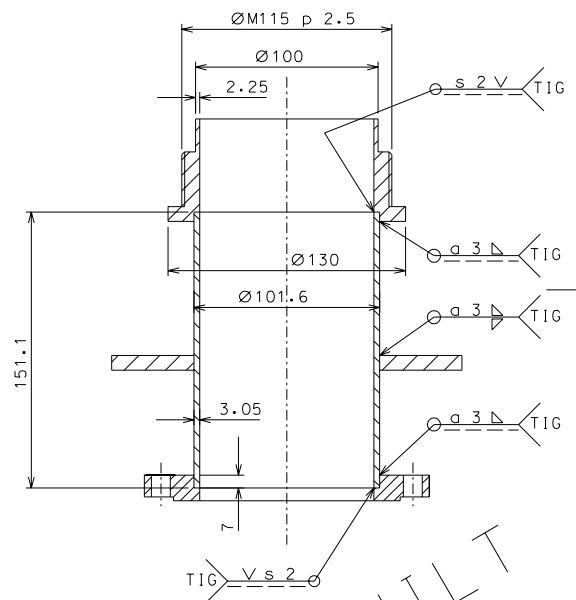
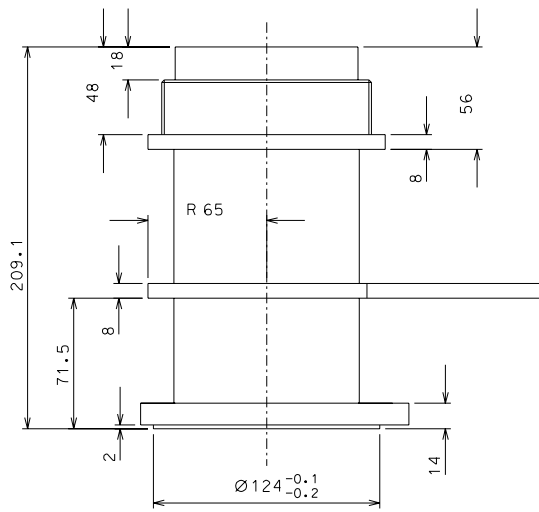


32

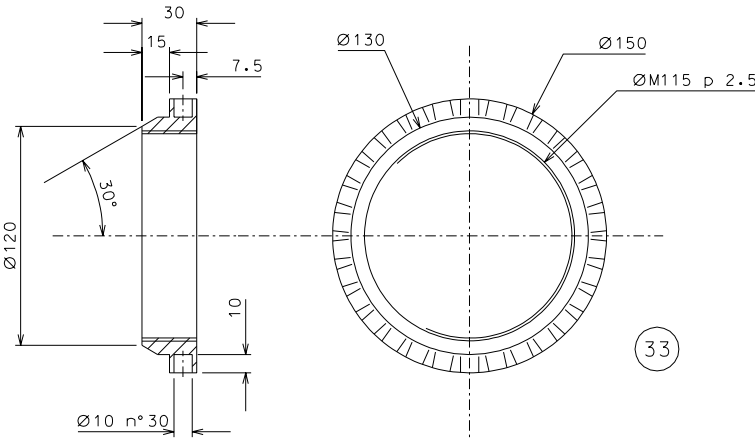


71



AS BUILT

NOTE: The details 93 and 30 must be aligned and slip fit with the details 71, 67, 29



33

changed type of welding	17-08-06		
changed material part 33	17-08-06		
modified part 32	19-06-06		
added dimension	07-04-06		

ref.	note	date	signature
modifications			
71	2	AISI 304	1/2
33	4	AISI 304	1/2
32	4	AISI 304 L	1/2
ref.	pieces	mat. and treatments	scale

General machining tolerances UNI 5307-63						
Dimensions	< 6	=6-30	>30-120	>120-315	>315-1000	>1000-2000
Linear Toli.	± 0.1	± 0.2	± 0.3	± 0.5	± 0.8	± 1.2
angular Toli.	± 1'	± 30'	± 20'	referred to the shortest side		

designed for		R.De Salvo	
draw. by		G. Gennaro-PROMECA	
date	9-01-05	scale	1/2
title		HAM-OPTICAL BENCH	
		INVERTED PENDULUM	
detail from	107		A 2