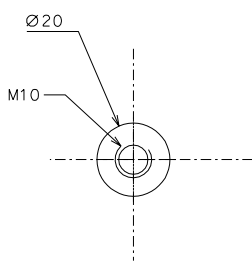
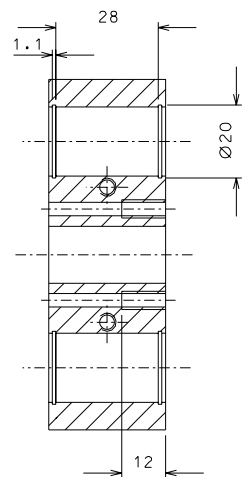
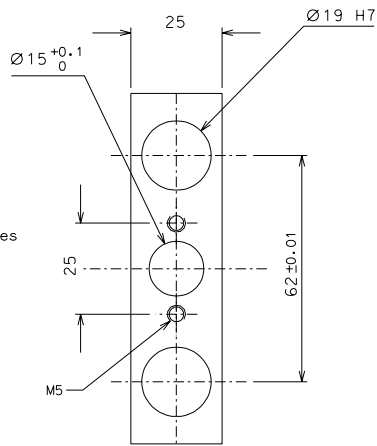
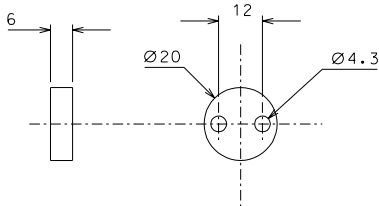
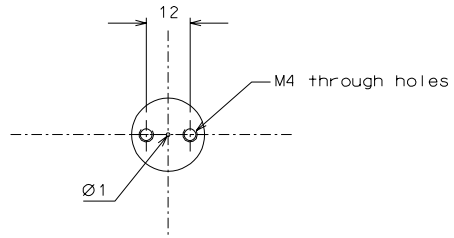
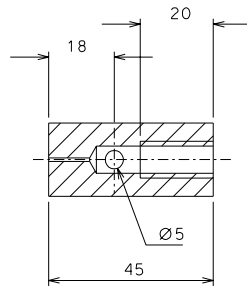


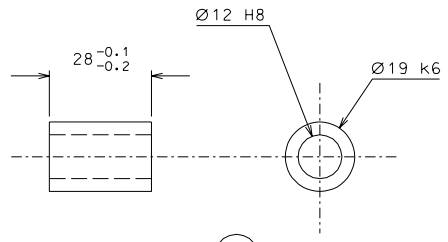
(44)



(49)

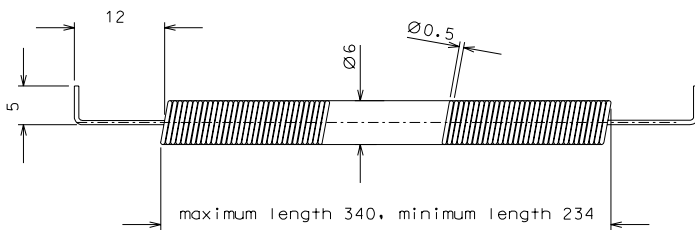


(48)



(52)

Note: Slip fit on part. 45 after assembly



(76)

ref.	note	date	signature
	addede dimensions spring	19-04-06	
modifications			
76	12	Cu Be	2/1
52	8	peek 1000	1/1
49	8	AISI 304	1/1
48	8	AISI 304	1/1
44	4	EN 6082	1/1
ref.	pieces	mat. and treatments	scale

General machining tolerances UNI 5307-63								
Dimensions	< 6	=6-30	>30-120	>120-315	=315-1000	>1000-2000	>2000-4000	>4000
linear Toli.	± 0.1	± 0.2	± 0.3	± 0.5	± 0.8	± 1.2	± 2	± 3
angular Toli.	± 1'	± 30'	± 20'	± 10' referred to the shortest side				
designed for							R.De Salvo	
draw. by							G. Gennaro-PROMECA	
date							12-01-05	scale 1/1
title							LIGO PROJECT	
HAM-OPTICAL BENCH							LIGO-D051139-01-D	
SLIDE							detail from 108-109	A 2