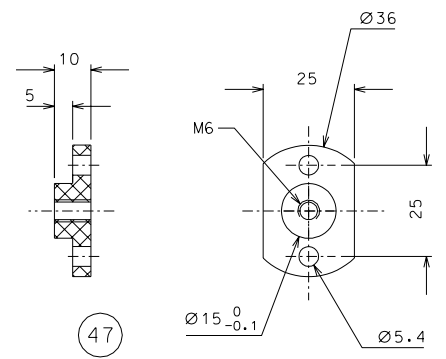
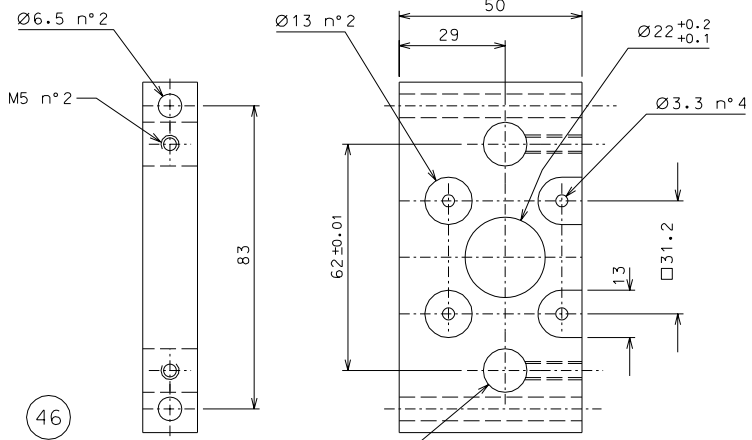


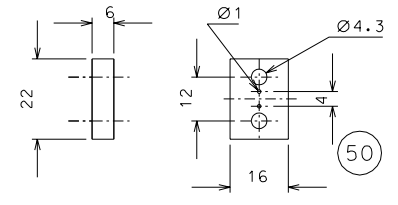
42



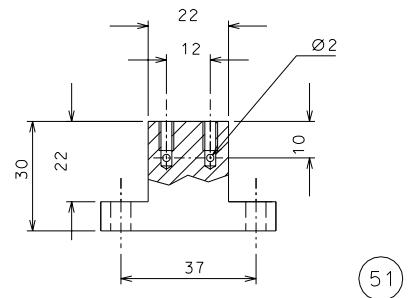
47



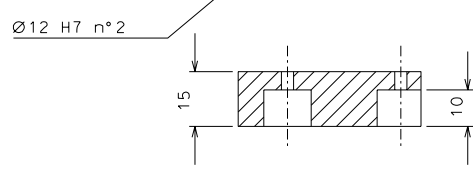
46



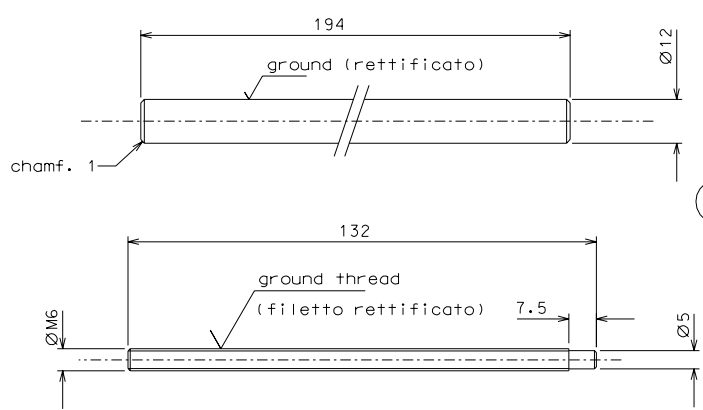
50



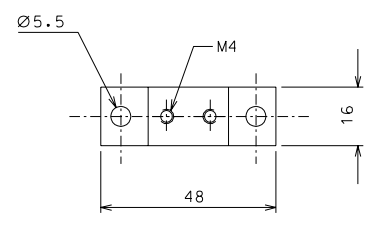
51



45



43



		eliminated incorrect dimension	04-05-06				
		modified number of parts	08-04-06				
		modified holes of motor	04-02-06				
ref.	note	date	signature				
modifications							
47	4	peek 1000	1/1				
46	4	EN 6082	1/1				
45	8	AISI 304	1/1				
43	4	AISI 304	1/1	51			
42	4	EN 6082	1/1	50			
ref.	pieces	mat. and treatments	scale	ref.	pieces	mat. and treatments	scale

General machining tolerances UNI 5307-63								
Dimensions	< 6	6-30	30-120	120-315	315-1000	>1000-2000	>2000-4000	>4000
Linear Toli.	± 0.1	± 0.2	± 0.3	± 0.5	± 0.8	± 1.2	± 2	± 3
angular Toli.	± 1'	± 30'	± 20'	± 10'				
referred to the shortest side								
designed for								
<b>R.De Salvo</b>								
draw. by								
<b>G. Gennaro-PROMECC</b>								
date				scale				
12-01-05				1/1				
title								
<b>HAM-OPTICAL BENCH</b>								
<b>SLIDE</b>								
ref. n°				sheet				
108				A 2				