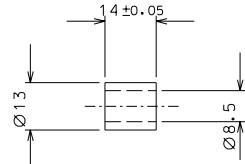
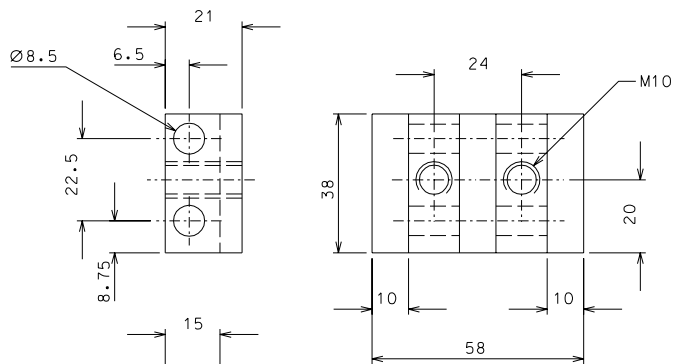


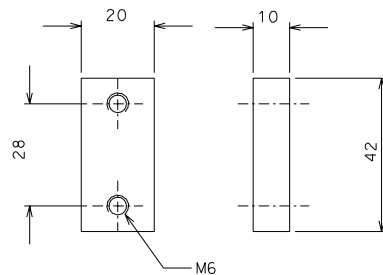
79



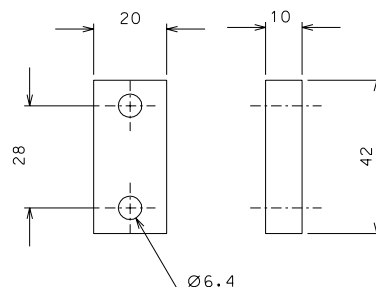
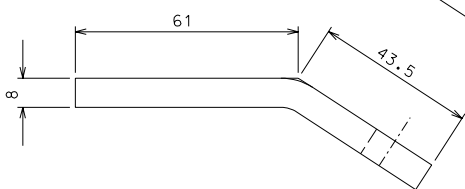
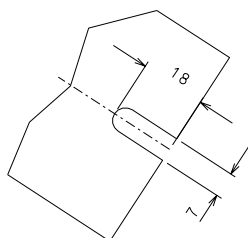
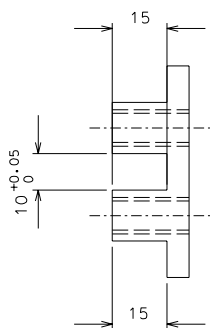
82



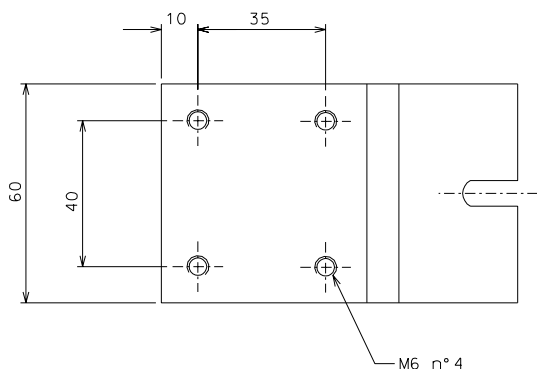
83



85



86



84

ref.	note	date	signature
modifications			
85	2	AISI 304	1/1
84	2	AISI 304	1/1
83	2	AISI 304	1/1
82	8	AISI 304	1/1
79	8	AISI 304	1/1
86	2	AISI 304	1/1
ref.	pieces	mat. and treatments	scale

General machining tolerances UNI 5307-63								
Dimensions	< 6	6-30	30-120	120-315	315-1000	>1000-2000	>2000-4000	>4000
Linear Toli.	± 0.1	± 0.2	± 0.3	± 0.5	± 0.8	± 1.2	± 2	± 3
angular Toli.	± 1'	± 30'	± 20'	± 10' referred to the shortest side				

designed for		R.De Salvo	
draw. by		G. Gennaro-PROMECA	
date		28-01-05	
scale		1/1	
title			
HAM-OPTICAL BENCH			
DETAIL MOUNTING BLADE			
ref. from		144	
A		2	