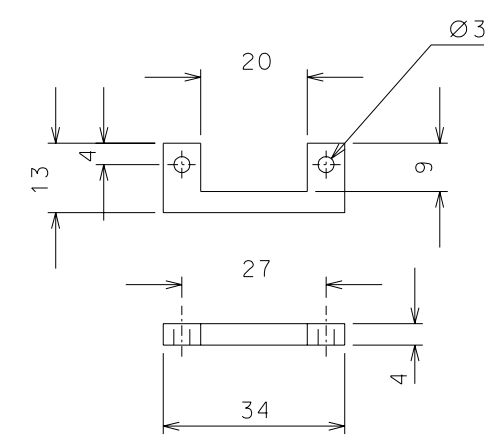
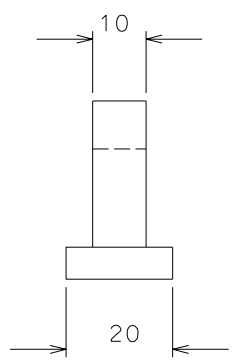
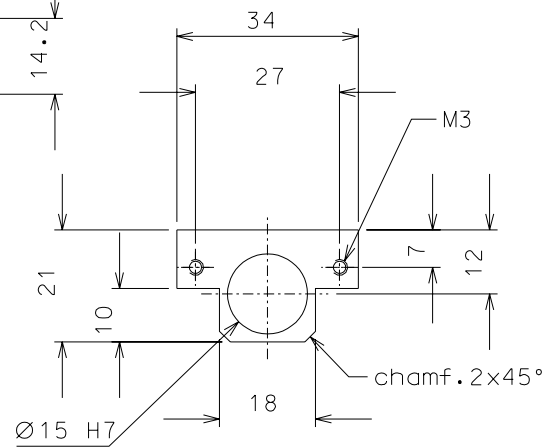
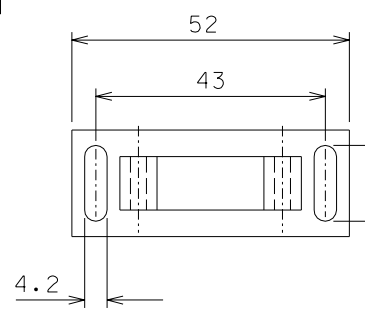


155



153

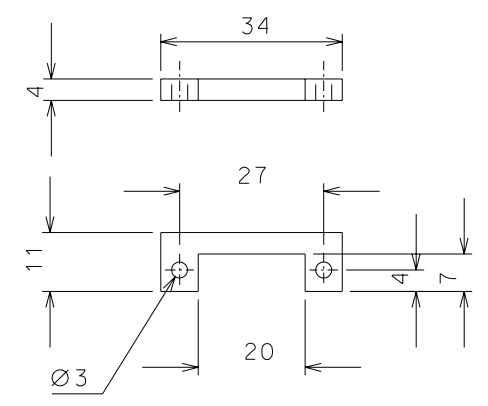


154

press fit onto part 147
clamp part 147 in 16 mm
lathe collet

ref.	note	date	signature
modifications			
155	16	EN 6082	1/1
154	16	EN 6082	1/1
153	16	EN 6082	1/1
151	16	EN 6082	1/1
ref.	pieces	mat. and treatments	scale

General machining tolerances UNI 5307-63								
Dimensions	< 6	>6-30	>30-120	>120-315	>315-1000	>1000-2000	>2000-4000	>4000
linear Toll.	±0.1	±0.2	±0.3	±0.5	±0.8	±1.2	±2	±3
angular Toll.	±1	±30'	±20'	±10' referred to the shortest side				
				designed for				
				R.De Salvo				
LIGO PROJECT				draw. by				
				G. Gennaro-PROMEC				
title HAM-OPTICAL BENCH BALANCE				date		scale		
				6-10-05		1/1		
detail from				LIGO-D051170-00-D				
				167-183		A 3		



151