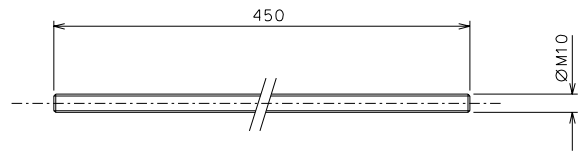
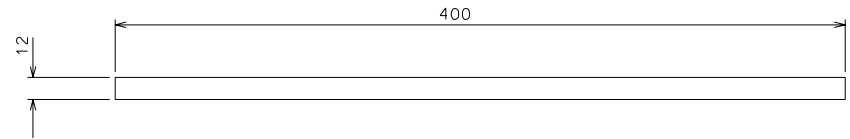
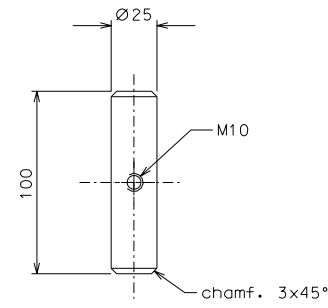


177

175



179



178

modified number pieces				26-02-06			
ref.	note			date	signature		
modifications							
179	1	inox	1/2				
178	1	inox	1/2				
177	1	Fe 340	1/2				
175	1	Fe 340	1/2				
ref.	pieces	mat. and treatments	scale	ref.	pieces	mat. and treatments	scale

General machining tolerances UNI 5307-63								
Dimensions	< 6	> 6-30	> 30-120	> 120-315	> 315-1000	> 1000-2000	> 2000-4000	> 4000
linear Toli.	± 0,1	± 0,2	± 0,3	± 0,5	± 0,8	± 1,2	± 2	± 3
angular Toli.	± 1'	± 30'	± 20'	± 10' referred to the shortest side				
designed for				R.De Salvo				
draw. by				G. Gennaro-PROMEC				
date				28-10-05		scale		1/2
title				LIGO PROJECT				
HAM-OPTICAL BENCH				LIGO-D051181-01-D				
LARGE BLADE TOOL				date ¹ from		180		A 2