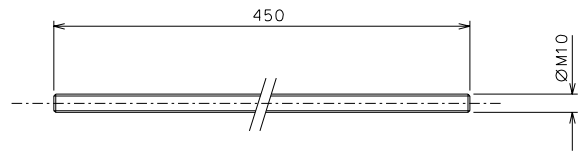
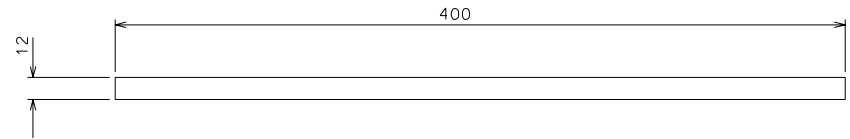
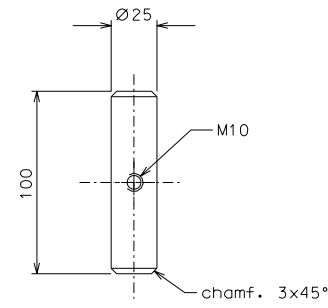


177

175



179



178

modified material detail 178		08-04-06	
modified number parts		26-02-06	
ref.	note	date	signature
modifications			
179	1	inox	1/2
178	1	EN 6082	1/2
177	1	Fe 340	1/2
175	1	Fe 340	1/2
ref.	pieces	mat. and treatments	scale
ref.	pieces	mat. and treatments	scale

General machining tolerances UNI 5307-63								
Dimensions	< 6	> 6-30	> 30-120	> 120-315	> 315-1000	> 1000-2000	> 2000-4000	> 4000
Linear Toli.	± 0,1	± 0,2	± 0,3	± 0,5	± 0,8	± 1,2	± 2	± 3
angular Toli.	± 1'	± 30'	± 20'	± 10' referred to the shortest side				
designed for						R.De Salvo		
draw. by						G. Gennaro-PROMEC		
date						28-10-05		
scale						1/2		
Title						LIGO PROJECT		
HAM-OPTICAL BENCH						LIGO-D051181-02-D		
LARGE BLADE TOOL						date ¹ from 180		
						A 2		