

Figure 1

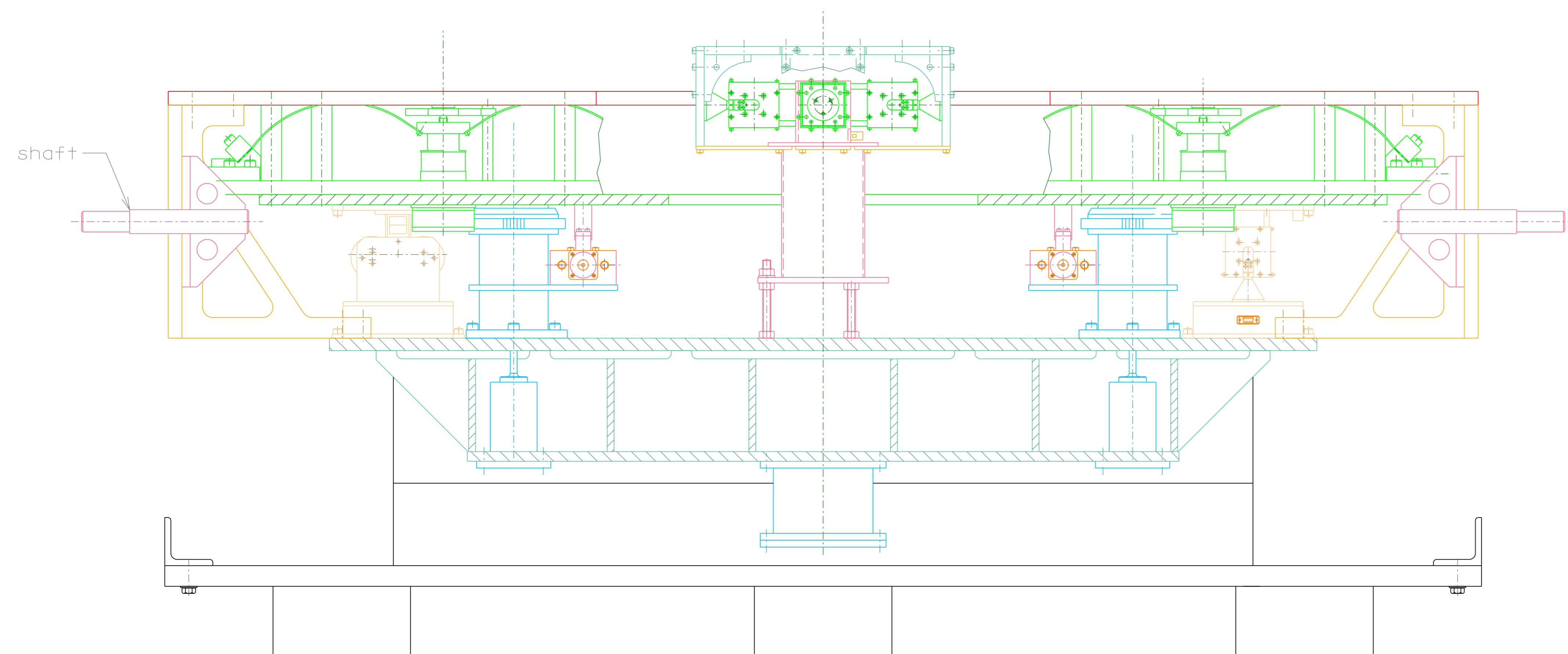


Figure 2-5

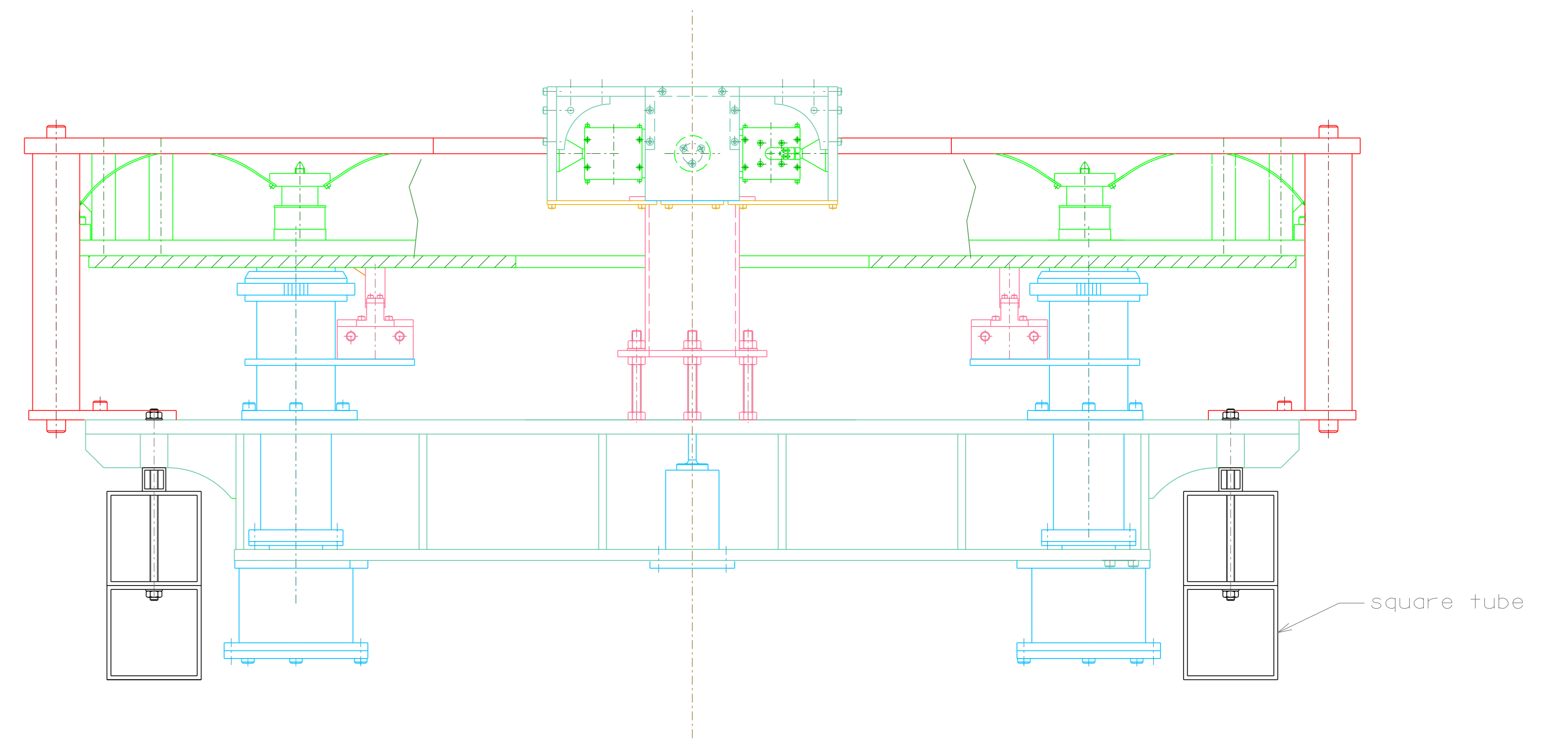


Figure 2

Assembling HAM SAS shipping crate:

1. With HAM SAS on trolley.
 2. Wrap HAM SAS in UHV aluminium foil, then wrap in polyethylene foil. Mount the square tubes below the bare structure, figure 1. Then double wrap in polyethylene foil. Include silica gel bags in both wraps. Seal all around with heat welding, except for shaft region.
 3. Bolt bottom crate below square tubes, figure 2.
 4. Bolt front and back of crate to bottom, and shim sides with polyethylene foam or polyethylene wrapped shims (3 to 5 mm thick), figure 3.
 5. Mount top on front and back, and on square tube shims, add polyethylene foam as needed, figure 4.
 6. Lift crate on fork lift from the front or the back.
 7. Remove shafts from HAM SAS side transport plates, figure 5.
 8. Wrap in aluminium foil the free parts, then sequentially seal the opened parts of both polyethylene wrapping layer.
 9. Mount sides on crate, with foam shim panels.
 10. Lower crate on floor.
- Unpacking, of course, will be the inverse process.

ref.	note	date	signature
modifications			
LIGO PROJECT		designed for	R.De Salvo
HAM-OPTICAL BENCH TRANSPORT		drawn by	G.Gennaro-PROMECC
		date	24-11-06
		title	LIGO-D051258-00-D
		scale	1/6
			A 1