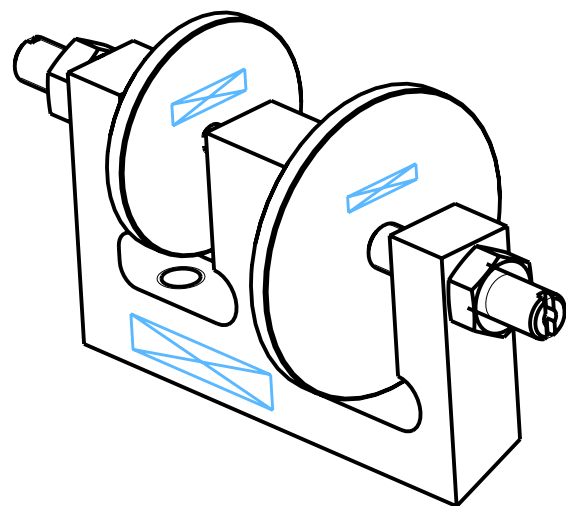
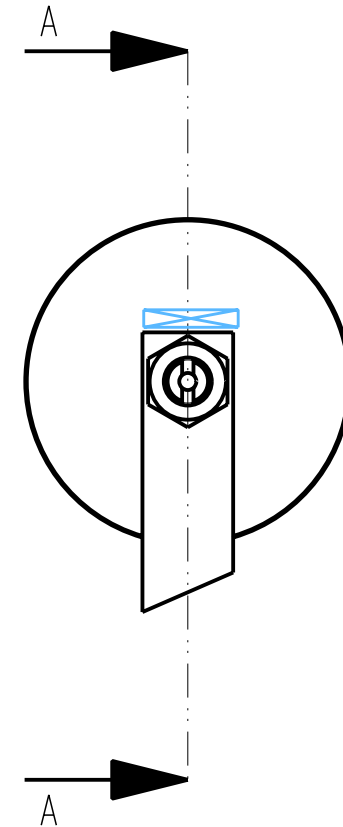
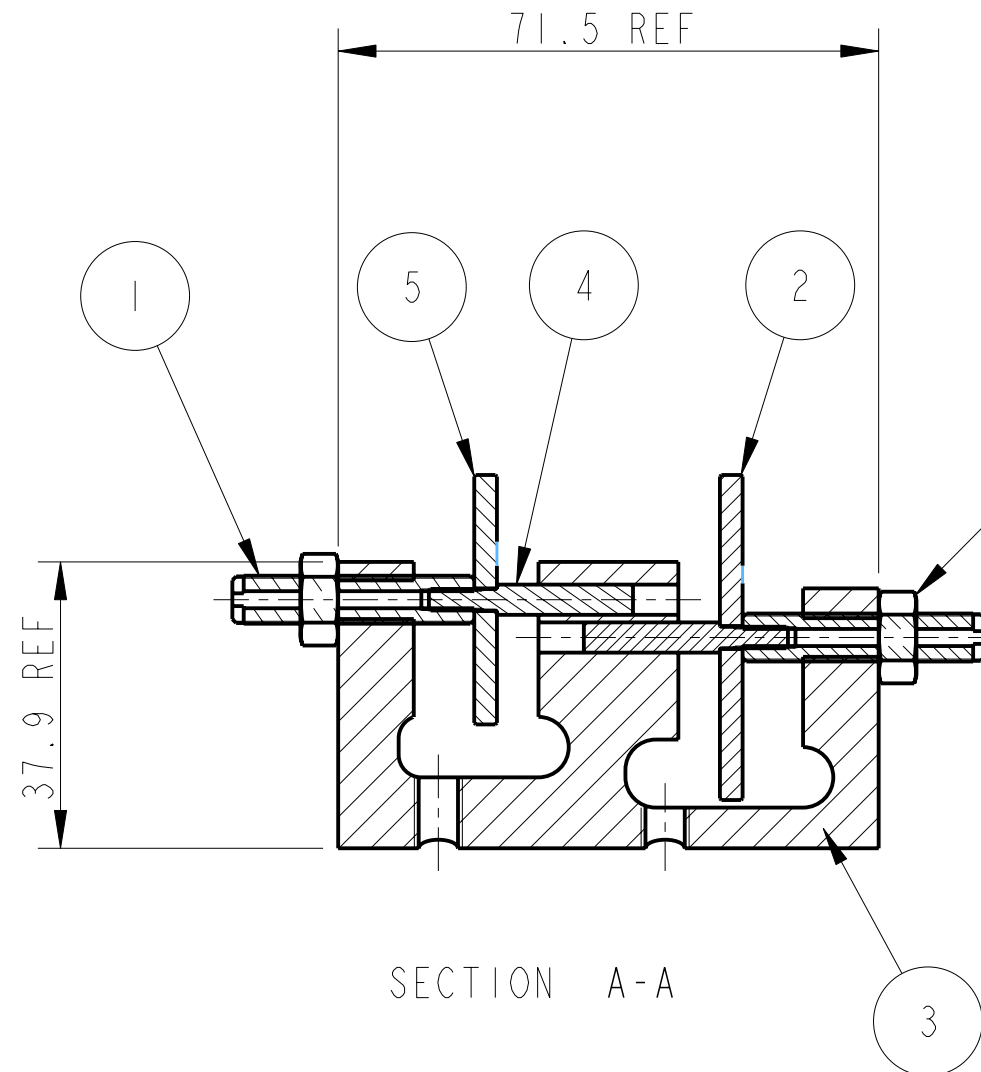


REV.	DATE	DCN #	DRAWING TREE #
A	30-OCT-06	E060260-00	.



ITEM	QTY	SPARE	TOTAL	PART NUMBER	DESCRIPTION	MATERIALS
1	2			D060466	SHAFT; UI MASS STOPS	PH BRONZE: -----
2	1			D060467	DISC - LARGE; UI MASS STOPS	ST. STEEL: 303/304/316
3	1			D060469	UI MASS BK STOP ASSY 2_BRACKET; .	AL. ALLOY: 5083 H4 OR 6061
4	2			D060483	LOCKING PIN; (UI MASS STOPS)	ST. STEEL: 303/304/316
5	1			D060484	DISC - SMALL; (UI MASS STOPS)	ST. STEEL: 303/304/316
6	2				1/4 20 UNC NUT; .	ST STEEL 300 SERIES

PARTS LIST

- NOTES: (UNLESS OTHERWISE SPECIFIED)
1. REMOVE ALL SHARP EDGES, R.02 MIN.
 2. DO NOT SCALE FROM DRAWING.
 3. ALL MACHINING FLUIDS SHALL BE WATER SOLUBLE AND FREE OF SULFUR, CHLORINE AND SILICONE, SUCH AS CINCINNATI MILACRON'S CIMTECH 410 (STAINLESS STEEL)
 4. SCRIBE, ENGRAVE OR STAMP DRAWING PARTNUMBER ON NOTED SURFACE OF PART AND A THREE DIGIT SERIAL NUMBER. SERIAL NUMBERS START AT 001 FOR THE FIRST PART AND PROCEED CONSECUTIVELY. USE .07" HIGH CHARACTERS. EXAMPLE: D020188- 001. A VIBRATORY TOOL MAY BE USED.

DIMENSIONS ARE IN mm [INCHES]
TOLERANCES:
X.XX ±0.2 mm
ANGULAR ±0.25 °

MATERIAL: SEE ITEMS LIST

FINISH: CLEAN
√μm [μin] Ra = -----

	NAME	DATE
DRAWN	NJS/FEL	02/AUG/06
CHECKED	J'OD	--/--/--
APPROVED	IW	--/--/--

CALIFORNIA INSTITUTE OF TECHNOLOGY
MASSACHUSETTS INSTITUTE OF TECHNOLOGY
IGR, GLASGOW UNIVERSITY GEO 600 GROUP
RUTHERFORD APPLETON LABORATORIES

SYSTEM **ADVANCED LIGO**

SUB-SYSTEM **SUS**

NEXT ASSY **QUAD N-PTYPE LOWER STRUCTURE**

PART NAME **UI MASS BK STOP ASSY - 2**

SIZE **B** DRG. NO. **D060468** REV **A.**

SCALE 1:1 PROJECTION: SHEET 1 OF 1