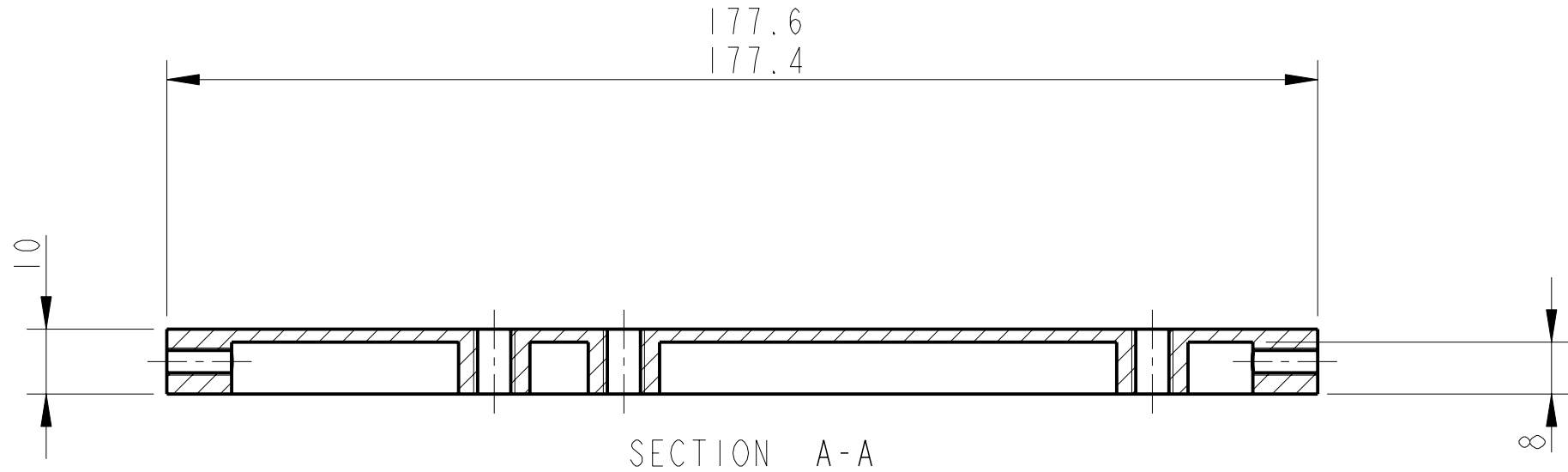
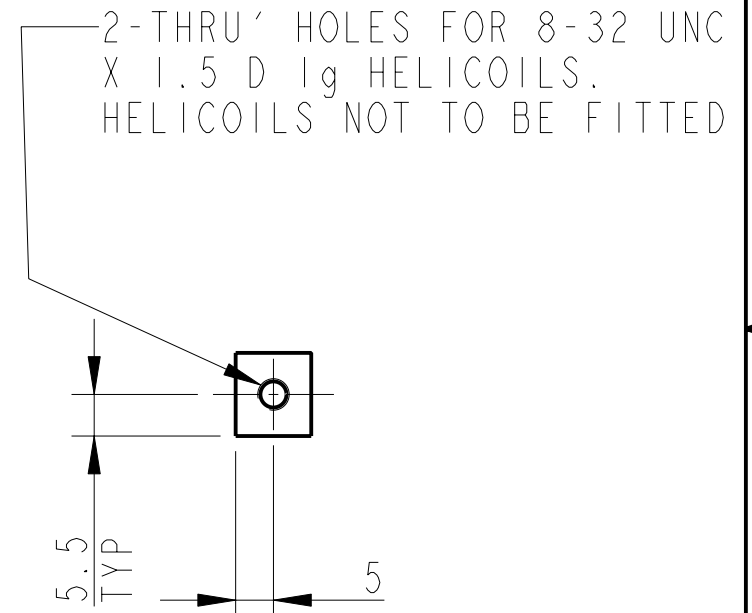
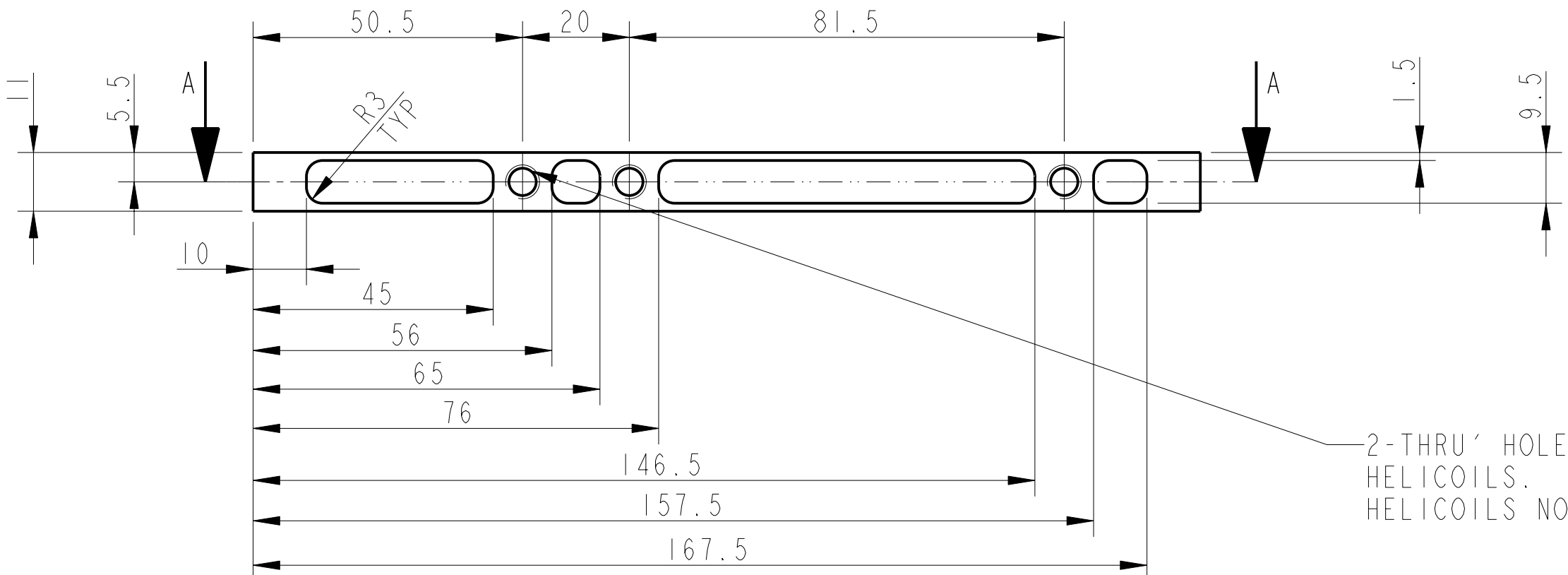


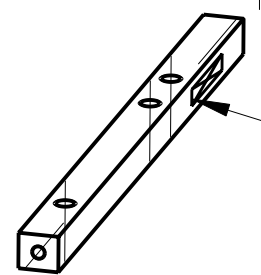
REV.	DATE	DCN #	DRAWING TREE #



SECTION A-A



2-THRU' HOLES FOR 1/4-20 UNC X 1.5 D 1g HELICOILS. HELICOILS NOT TO BE FITTED.



PART NO. (SEE NOTE 4) TO BE ETCHED OR STAMPED IN APPROX POSITION SHOWN.

SCALE 1:2

NOTES: (UNLESS OTHERWISE SPECIFIED)		CALIFORNIA INSTITUTE OF TECHNOLOGY MASSACHUSETTS INSTITUTE OF TECHNOLOGY 1GR, GLASGOW UNIVERSITY GEO 600 GROUP RUTHERFORD APPLETON LABORATORIES	
1. REMOVE ALL SHARP EDGES, R.02 MIN.		SYSTEM ADVANCED LIGO	
2. DO NOT SCALE FROM DRAWING.		SUB-SYSTEM SUS	
3. ALL MACHINING FLUIDS SHALL BE WATER SOLUBLE AND FREE OF SULFUR, CHLORINE AND SILICONE, SUCH AS CINCINNATI MILACRON'S CIMTECH 410 (STAINLESS STEEL)		NEXT ASSY TD-1103-207	
4. SCRIBE, ENGRAVE OR STAMP DRAWING PART NUMBER ON NOTED SURFACE OF PART AND A THREE DIGIT SERIAL NUMBER. SERIAL NUMBERS START AT 001 FOR THE FIRST PART AND PROCEED CONSECUTIVELY. USE .07" HIGH CHARACTERS. EXAMPLE: D020188- 001. A VIBRATORY TOOL MAY BE USED.		PART NAME UI MASS SIDE STOP MOUNT 3	
DIMENSIONS ARE IN mm [INCHES] TOLERANCES: X.XX ±0.2 mm ANGULAR ±0.25 °		MATERIAL: AL. ALLOY 5083 H4 OR 6061	
FINISH: CLEAN √μm [μin] Ra = 1.6		DRAWN: NJS/FEL 13/JULY/06	
CHECKED: J'OD		APPROVED: IW	
SCALE 1:1		PROJECTION:	
DRG. NO. D060473		SHEET 1 OF 1	