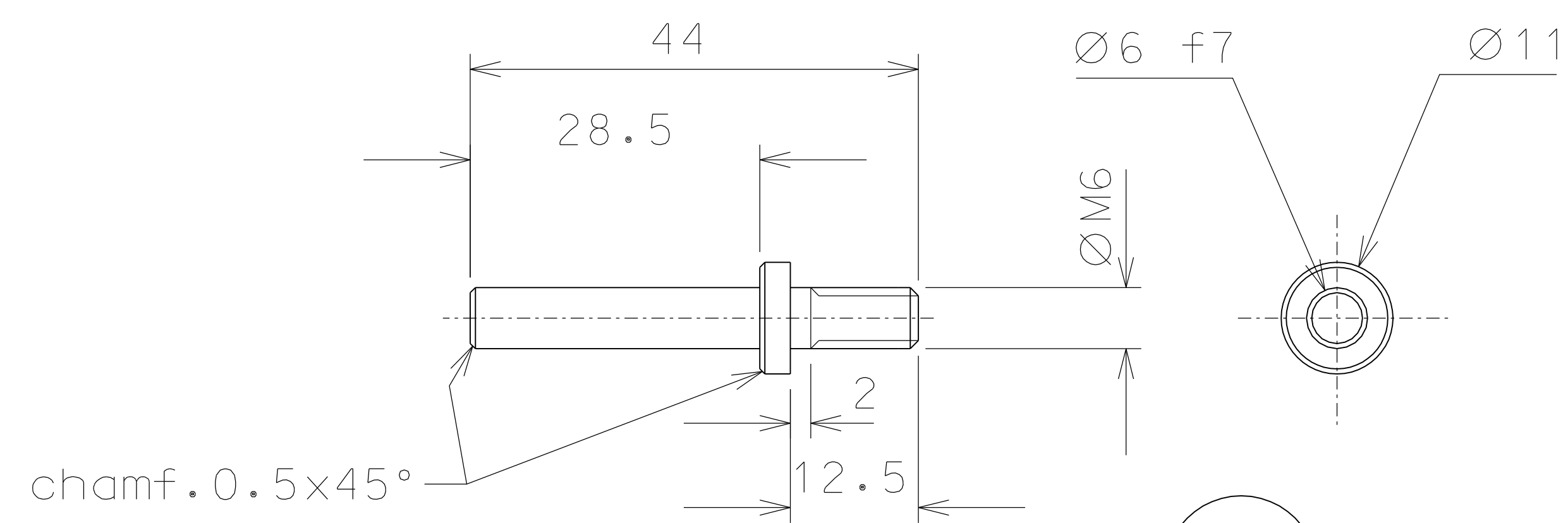
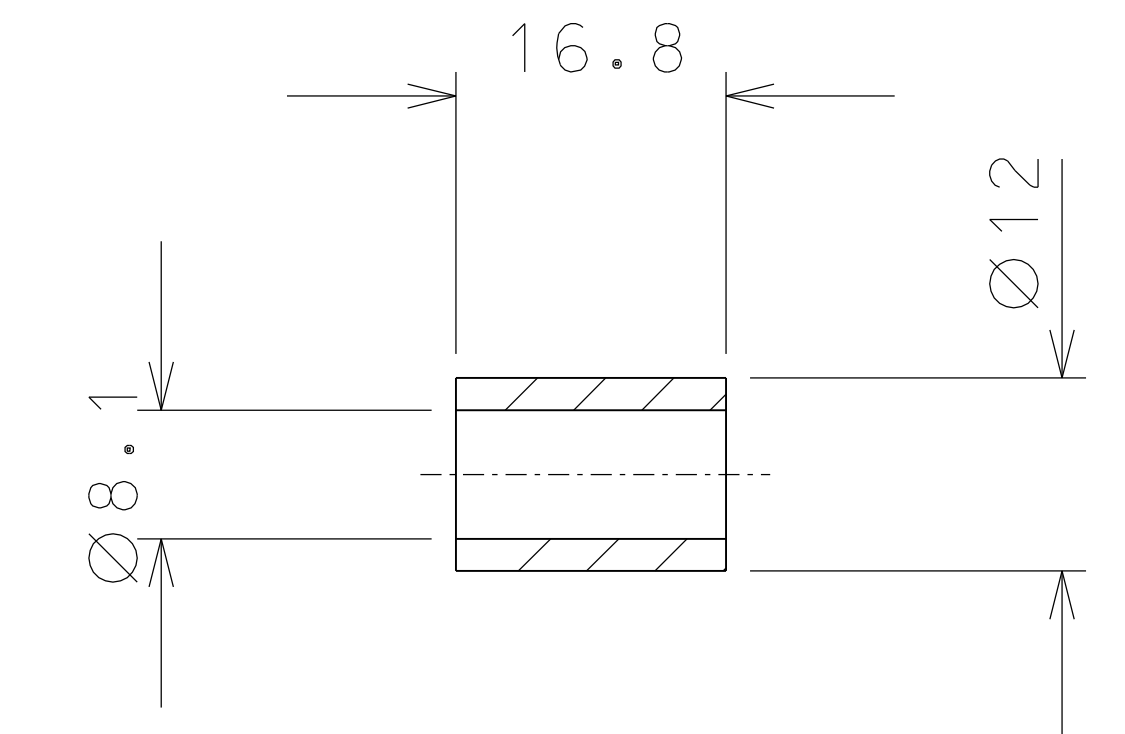


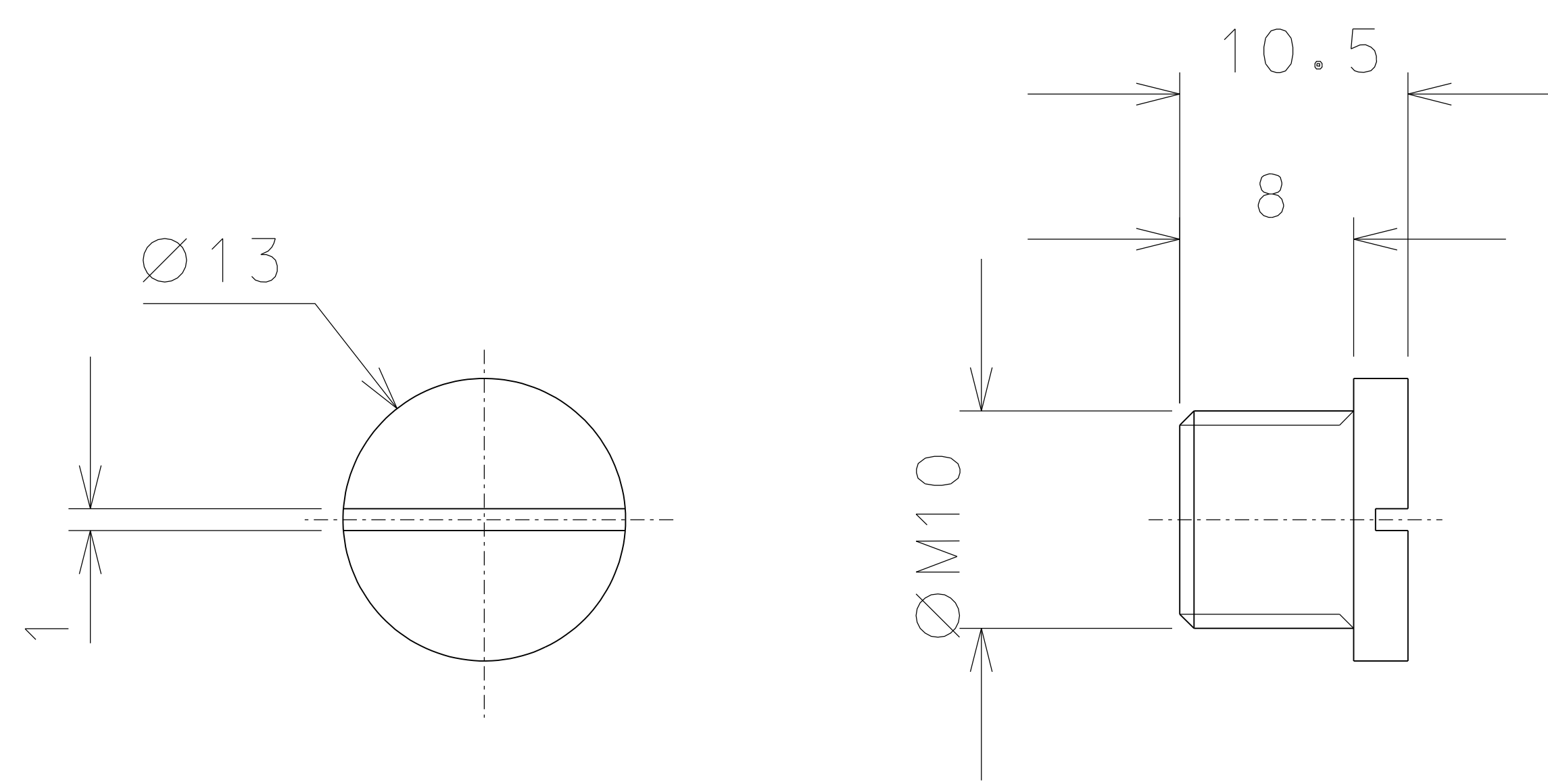
20



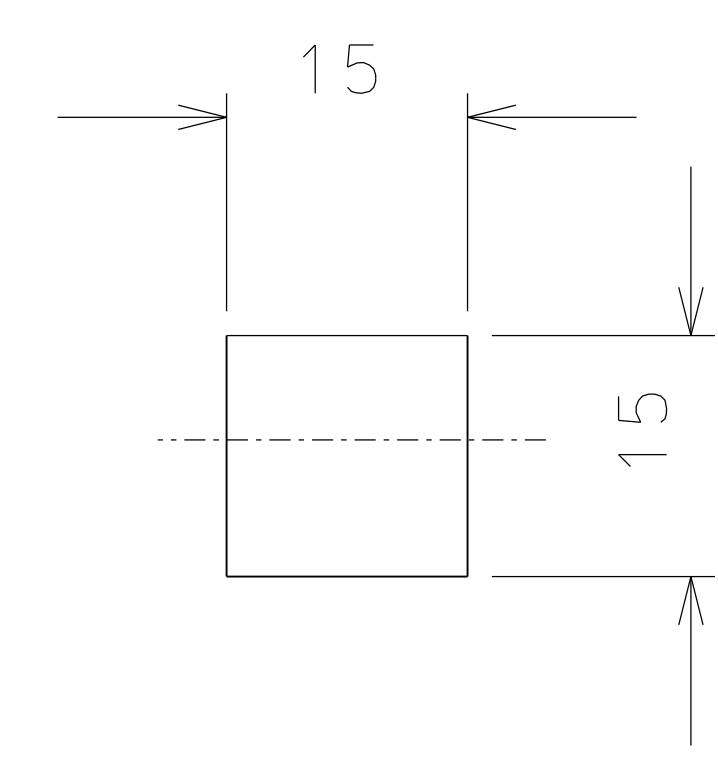
26



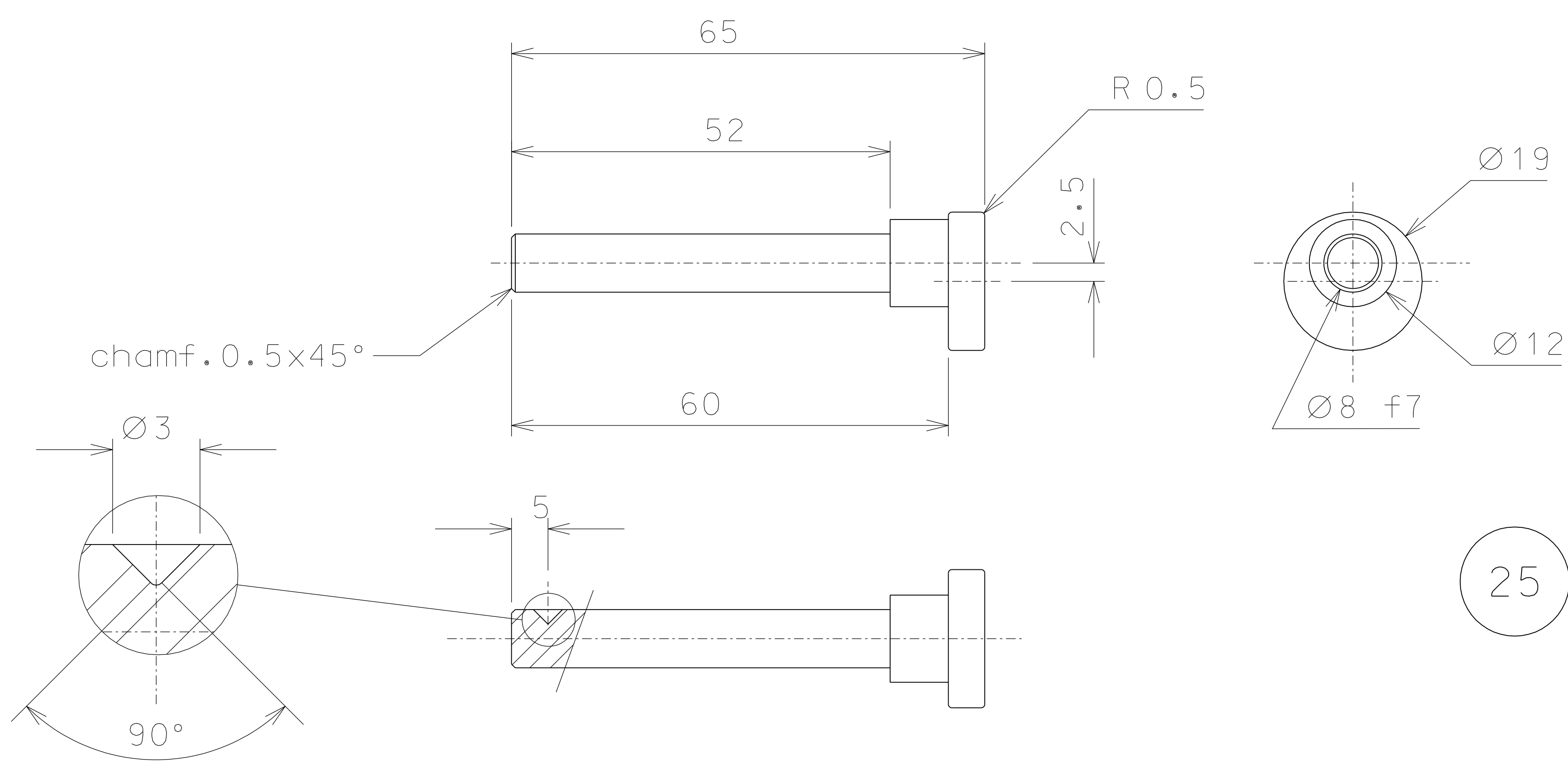
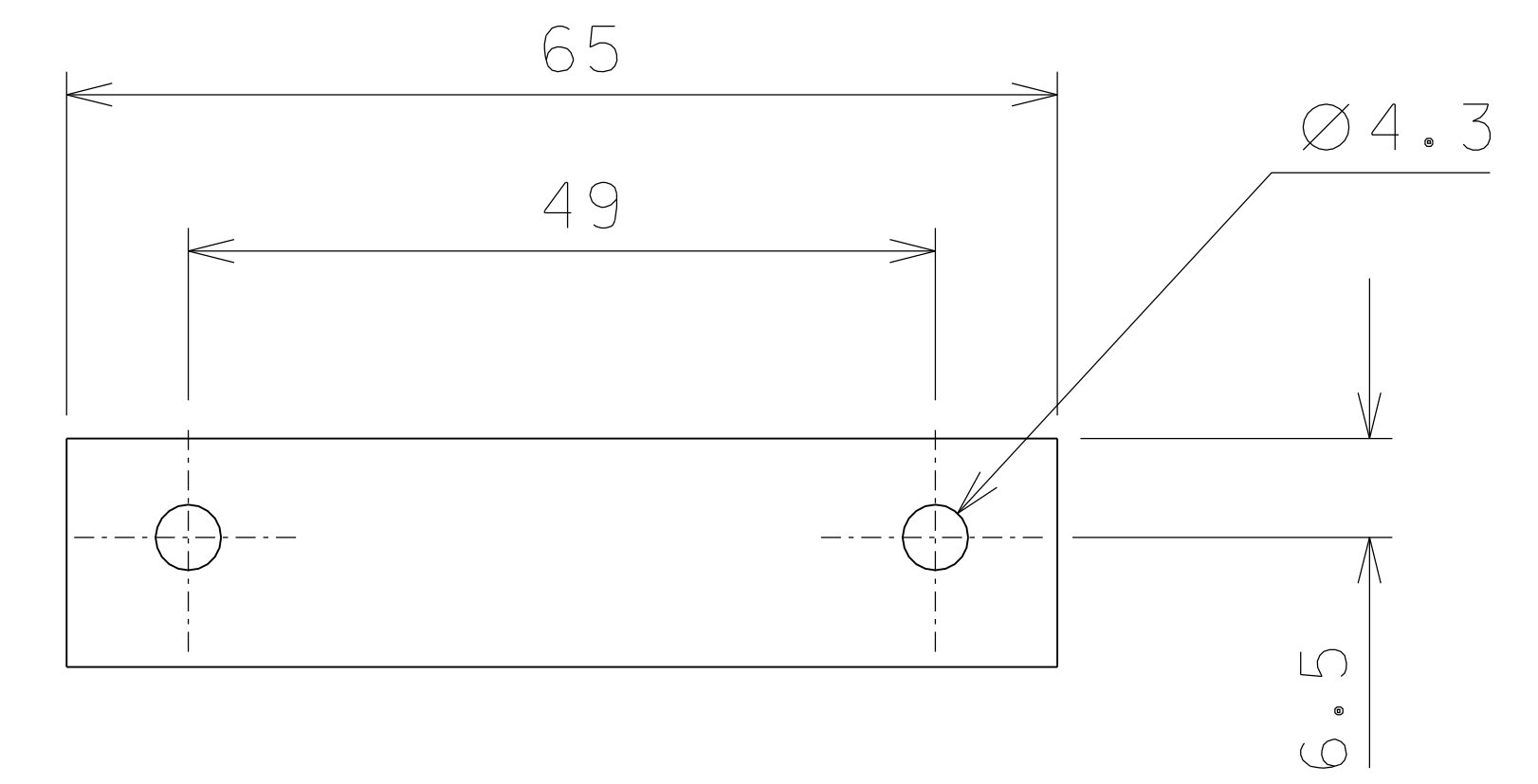
24



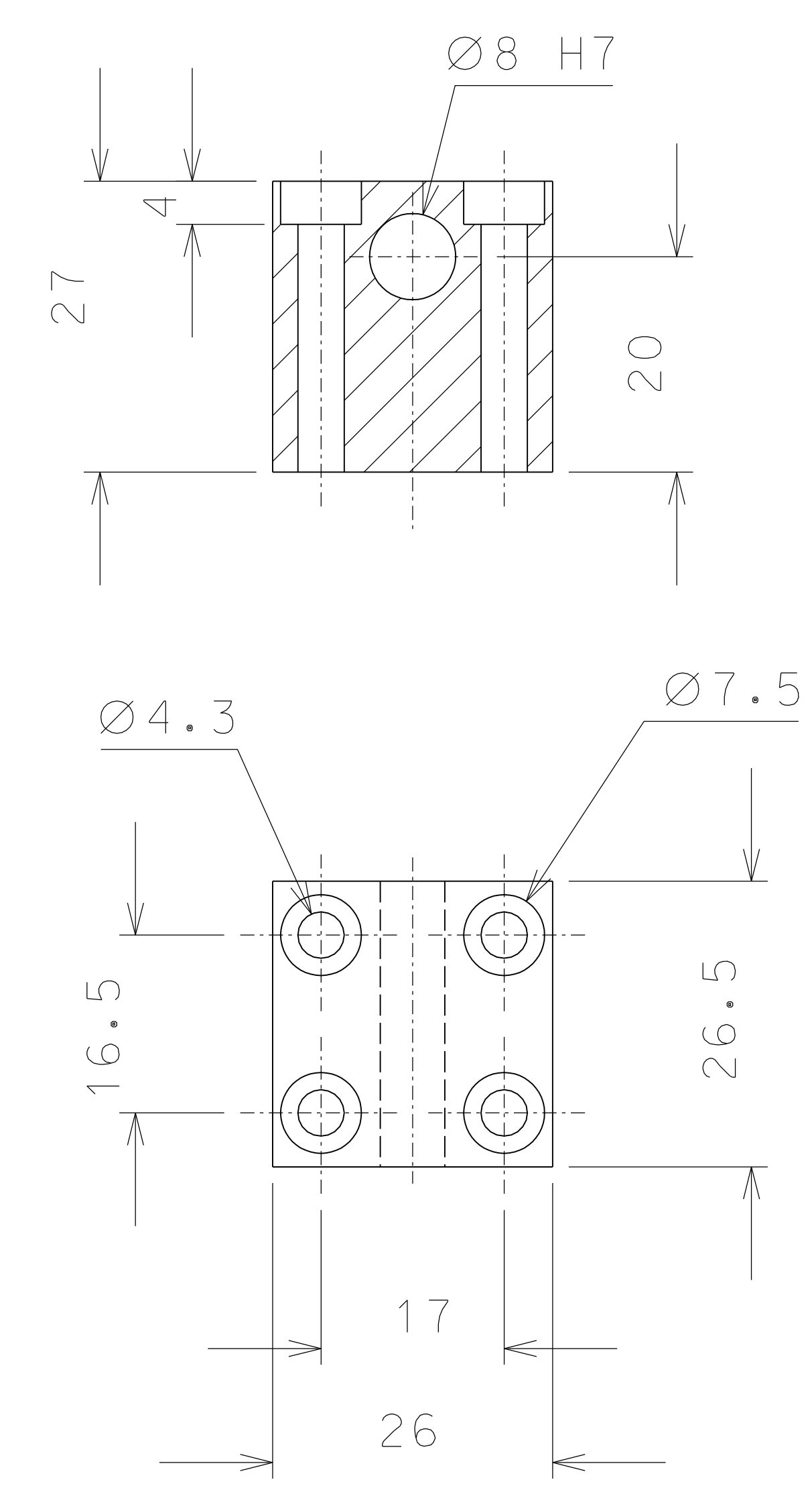
19



27



25



30

ref.	note	date	signature
modifications			
26	1	AISI 316	1/1
25	1	AISI 316	1/1
24	1	bronze B14	1/1
20	4	AISI 316	4/1
19	4	AISI 316	2/1
30	1	bronze B14	1/1
27	1	steel or B14	1/1
ref.	pieces	mat. and treatments	scale

General machining tolerances UNI 5307-63								
Dimensions	< 6	> 6-30	> 30-120	> 120-315	> 315-1000	> 1000-2000	> 2000-4000	> 4000
linear Toll.	± 0.1	± 0.2	± 0.3	± 0.5	± 0.8	± 1.2	± 2	± 3
angular Toll.	± 1	± 30'	± 20'	± 10' referred to the shortest side				

designed for	R.De Salvo		
draw. by	G. Gennaro-PROMECC		
date	8-04-08	scale	1/1
title	LIGO PROJECT		
	TILTMETER		
	DETAILS		
ref. from	1001	scale	A 2