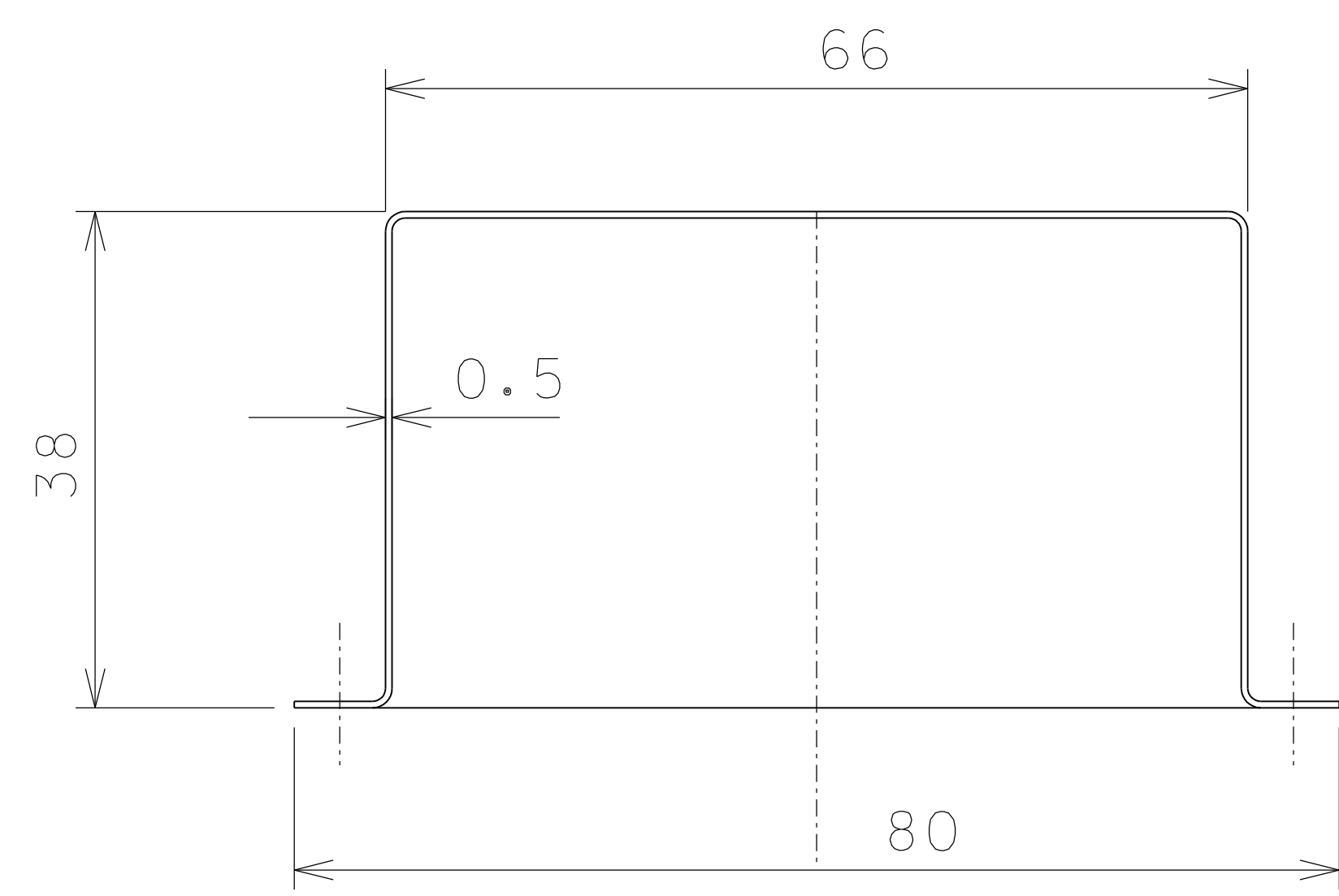
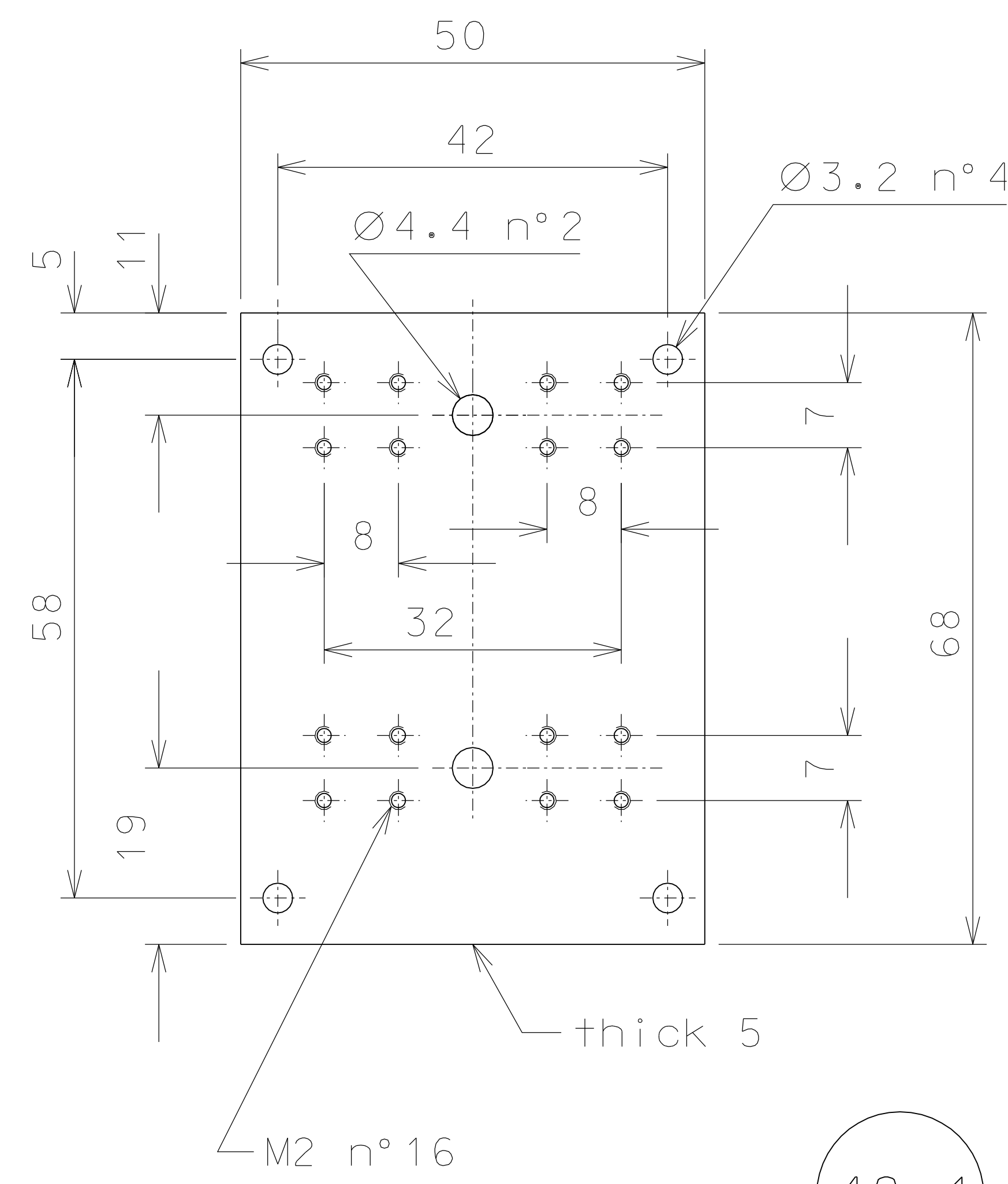
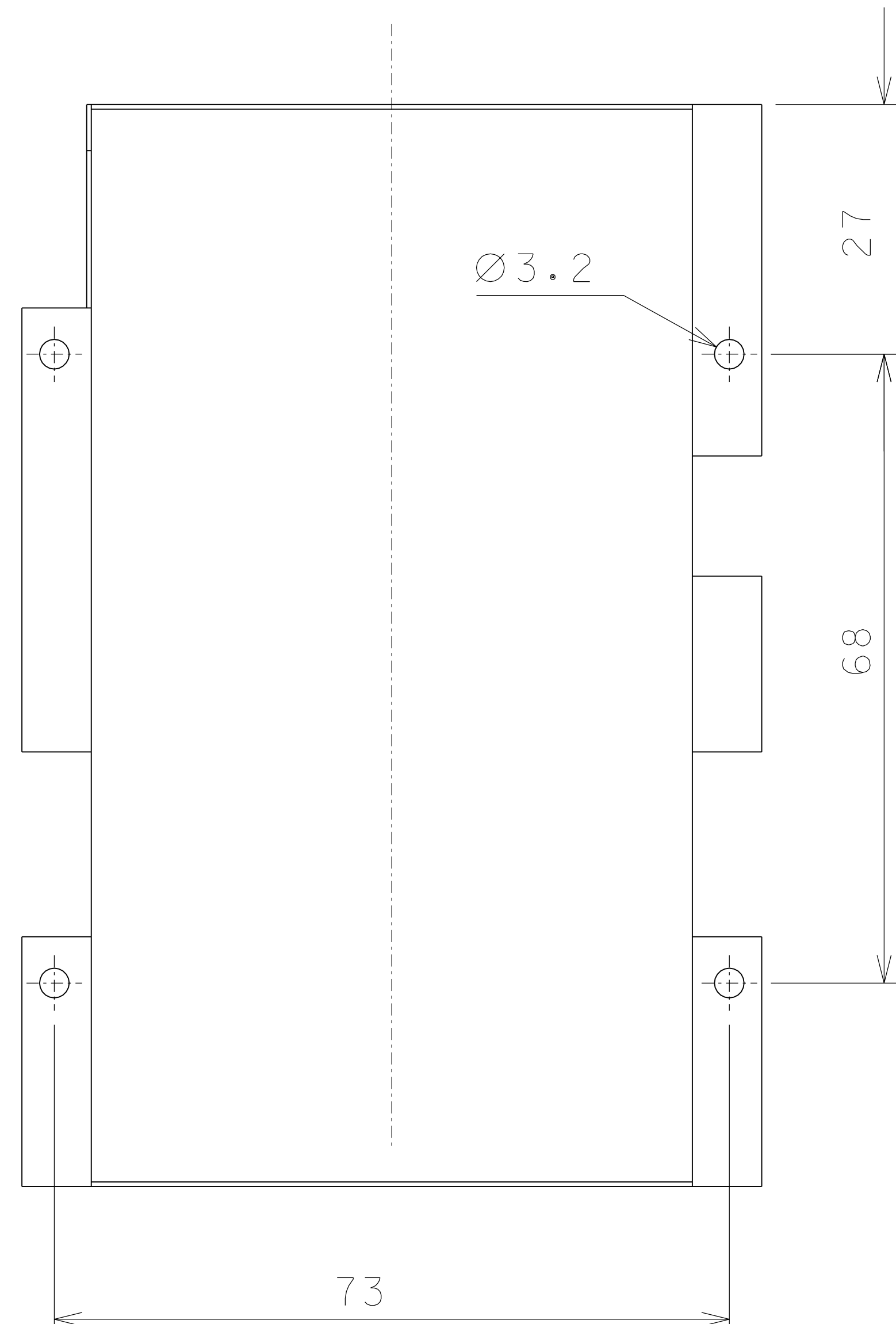
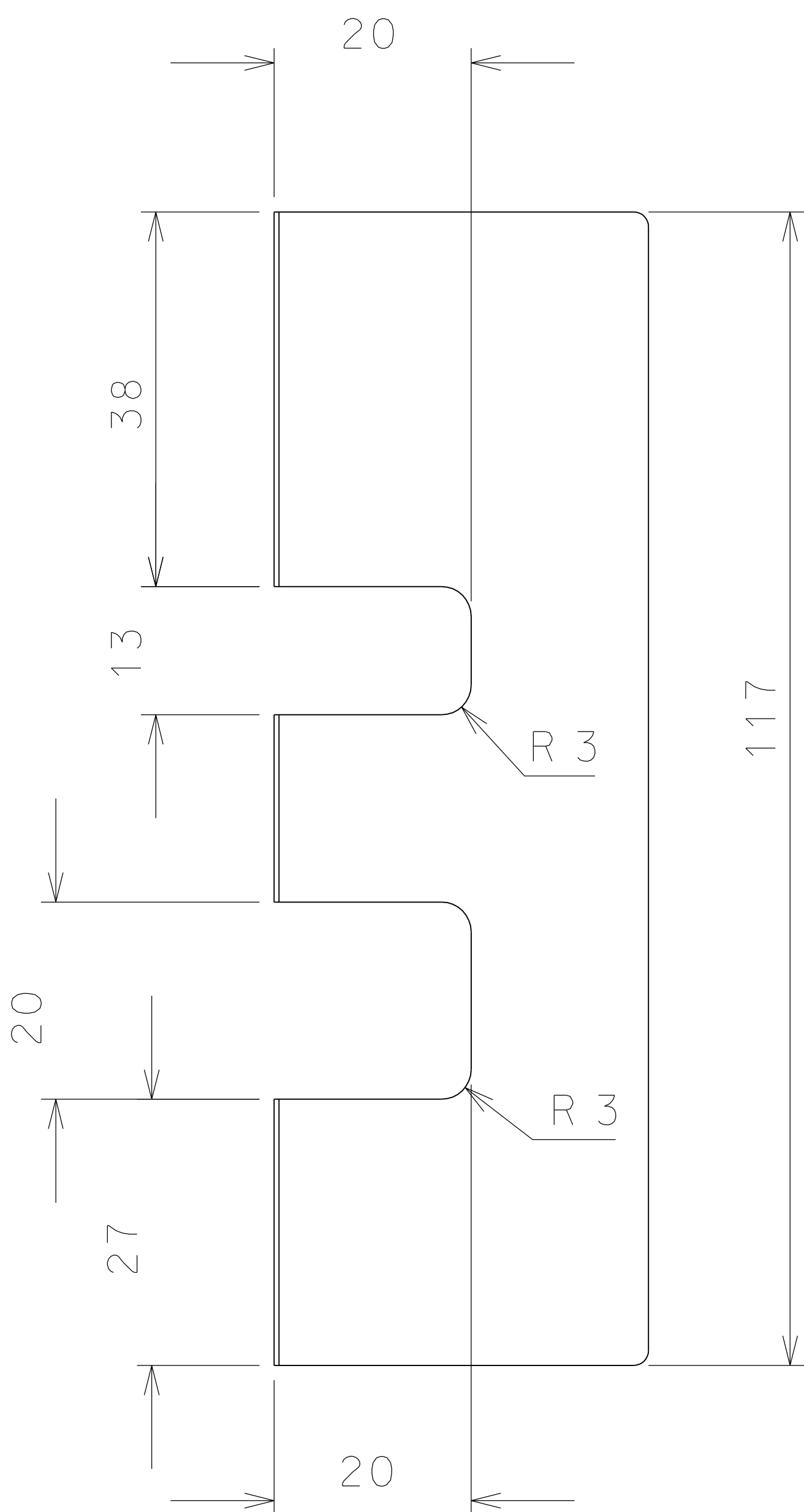


50

A = 11.5; B = 6.1; C = 5.4; D = 0.5; n°2 pieces
 A = 14.8; B = 7.7; C = 7; D = 0.5; n°2 pieces
 A = 17.8; B = 9.6; C = 9; D = 0.6; n°2 pieces

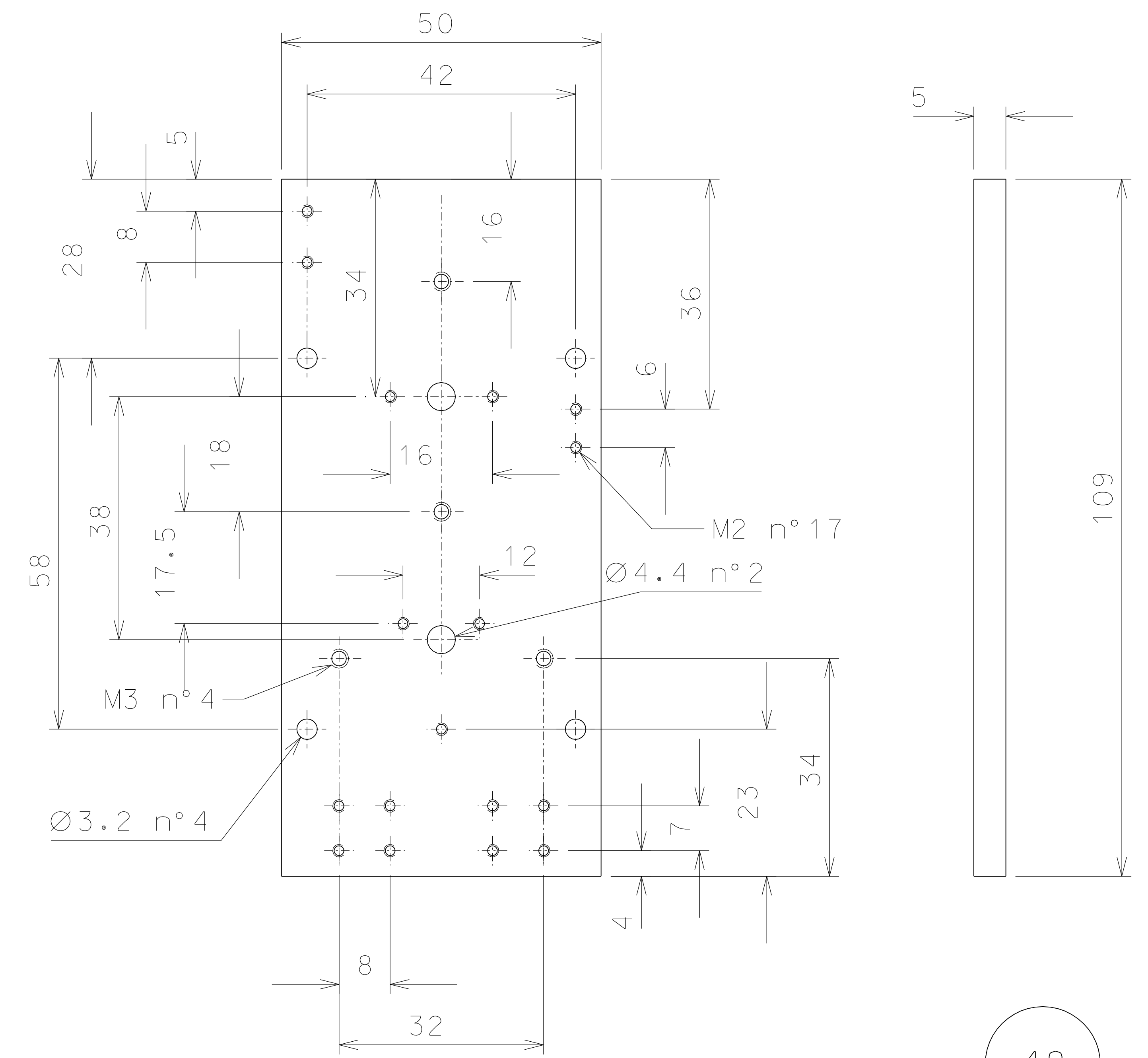


49

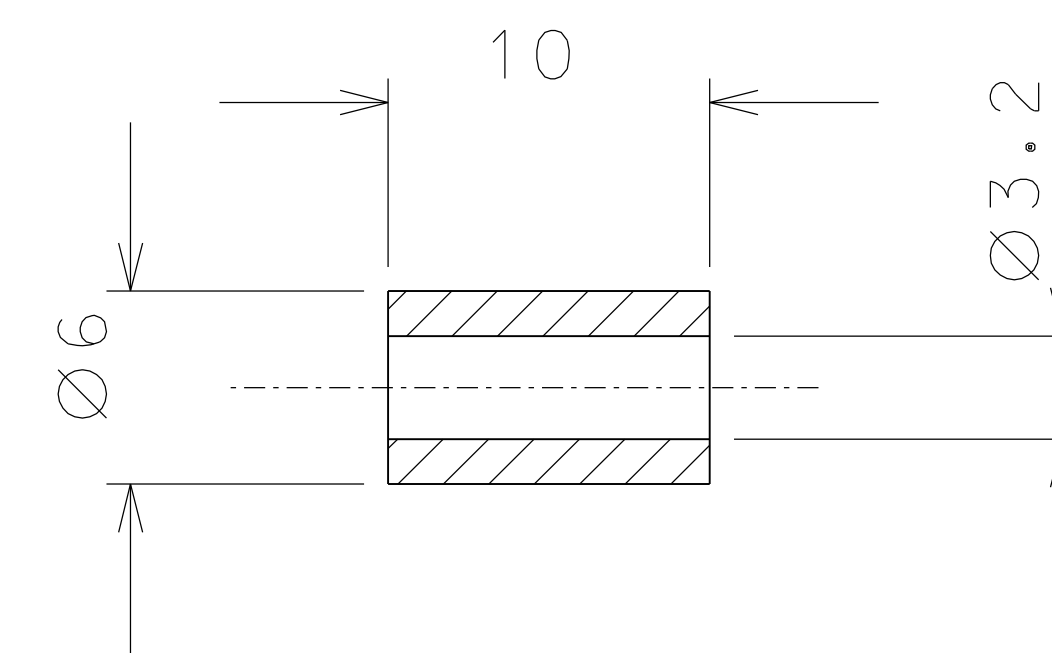
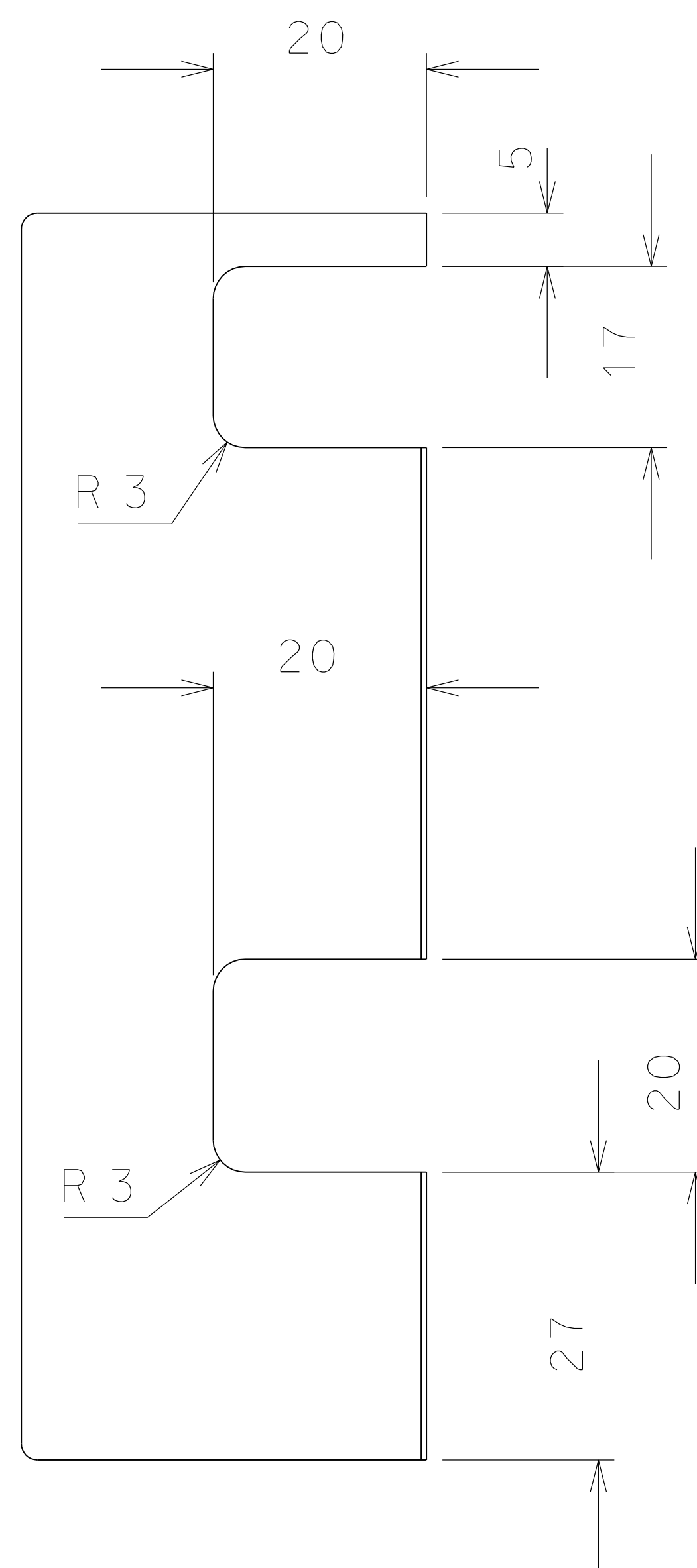


48.1

Use with LVDT version



48



47

ref.	note	date	signature
modifications			
50	2x3 peek	1/1	
49	1 DHFC copper	1/1	
48.1	1 peek	1/1	
48	1 peek	1/1	
47	4 peek	2/1	
ref.	pieces	mat. and treatments	scale
ref.	pieces	mat. and treatments	scale

General machining tolerances UNI 5307-63								
Dimensions	< 6	> 6-30	> 30-120	> 120-315	> 315-1000	> 1000-2000	> 2000-4000	> 4000
linear Toll.	± 0.1	± 0.2	± 0.3	± 0.5	± 0.8	± 1.2	± 2	± 3
angular Toll.	± 1	± 30'	± 20'	± 10' referred to the shortest side				
designed for		R.De Salvo						
draw. by		G. Gennaro-PROMECC						
date		8-05-08		scale		1/1		
title		TILTMETER DETAILS						
LIGO PROJECT		LIGO-D081016-00-D		detail from		1003 A 2		