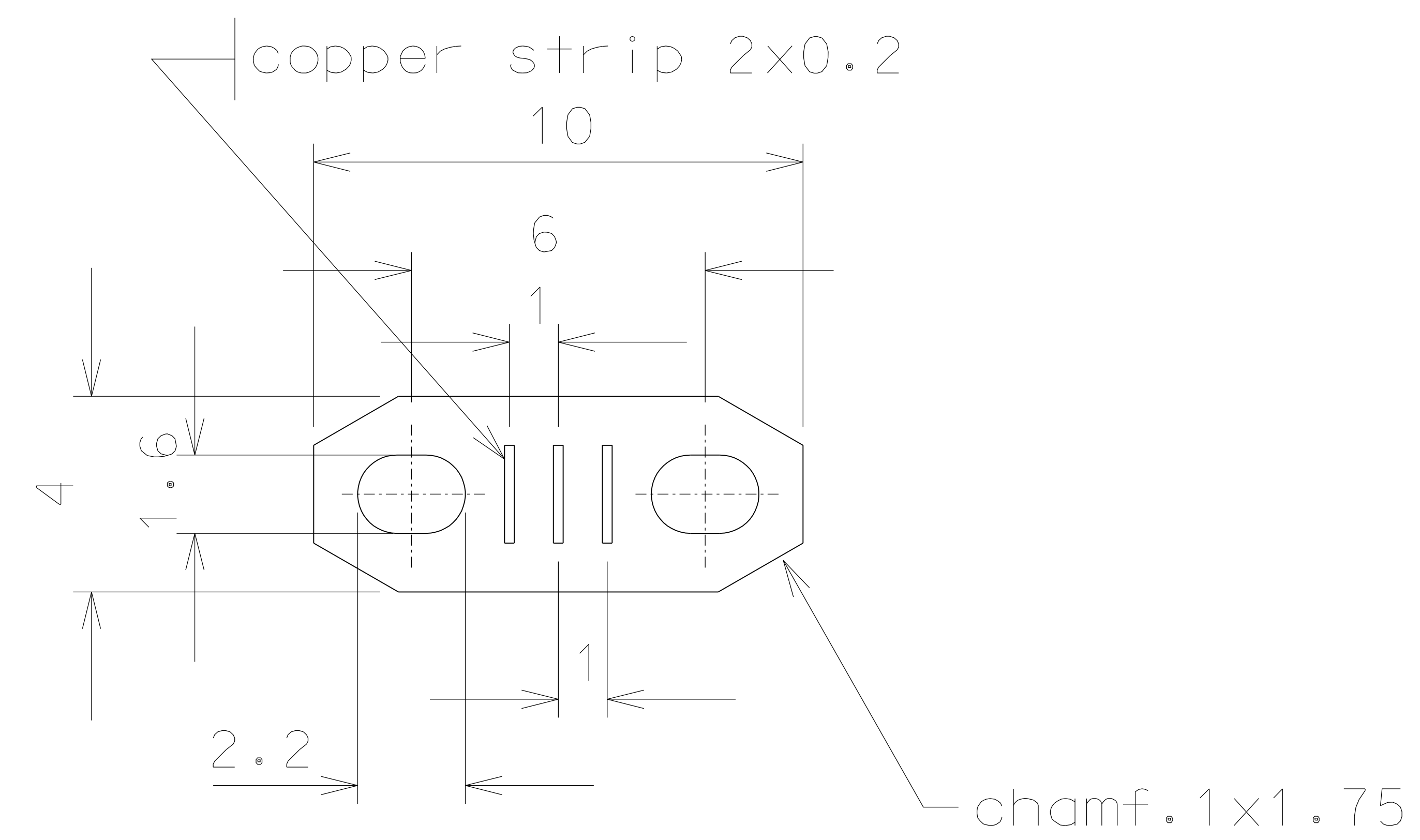
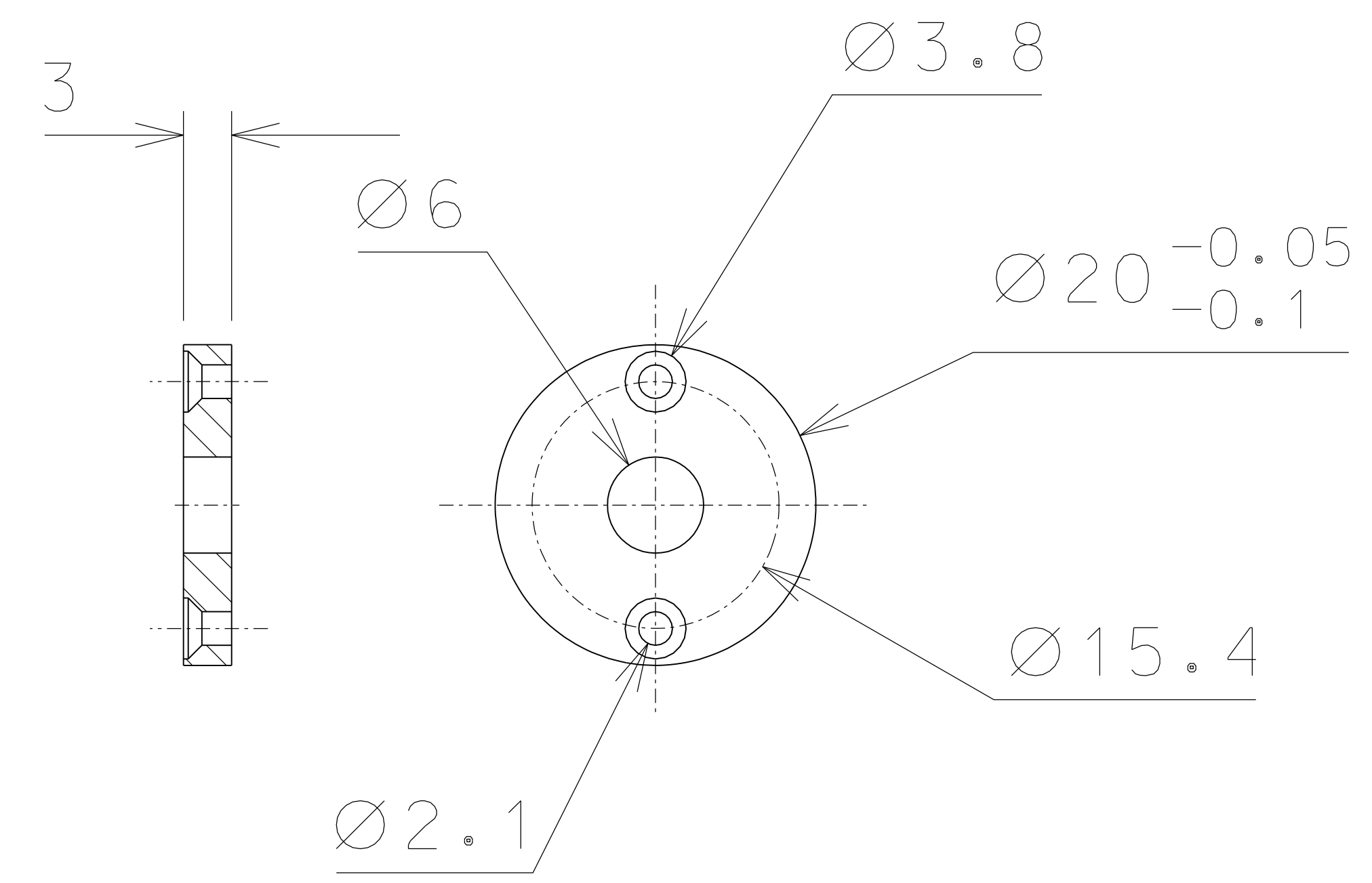
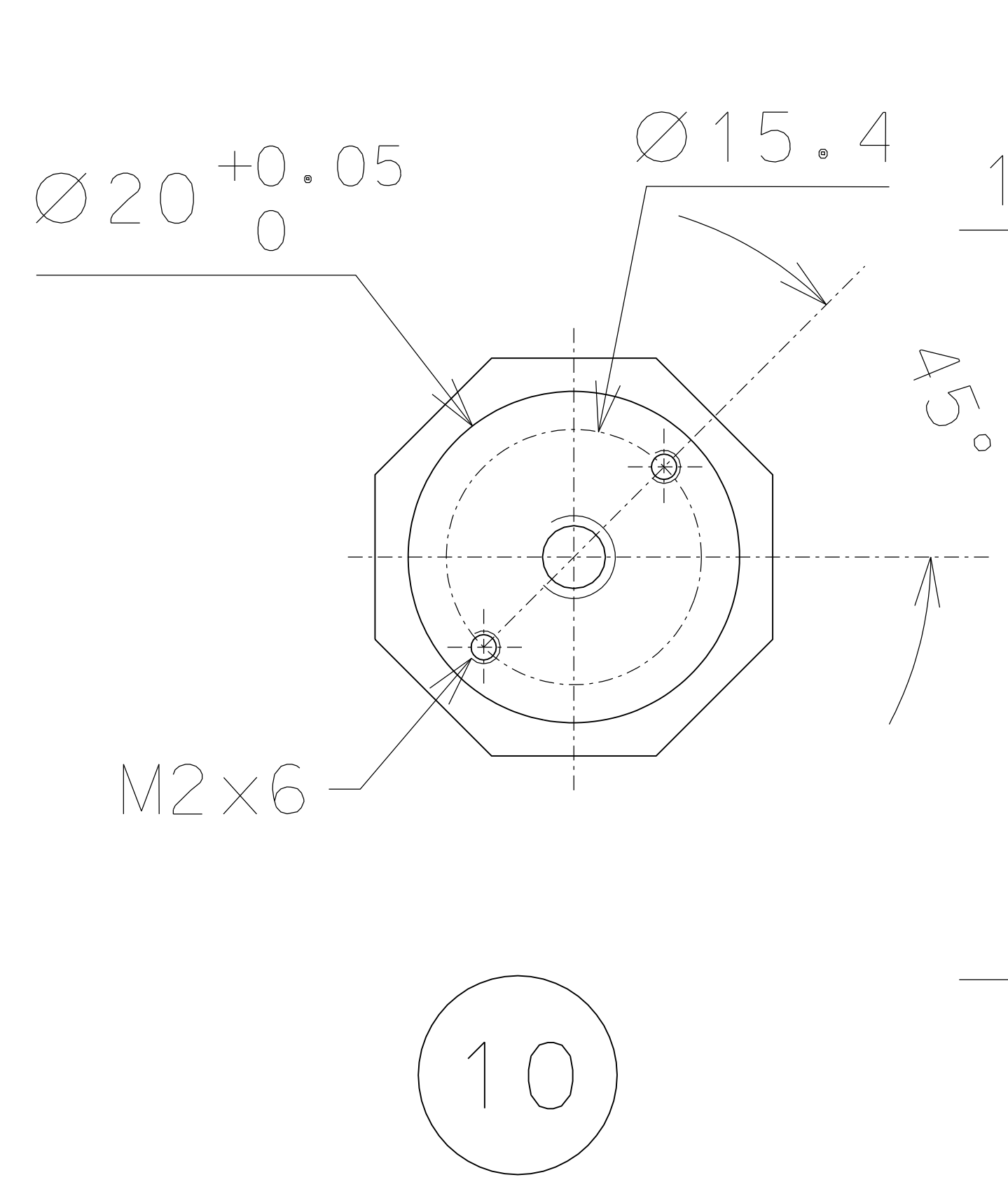
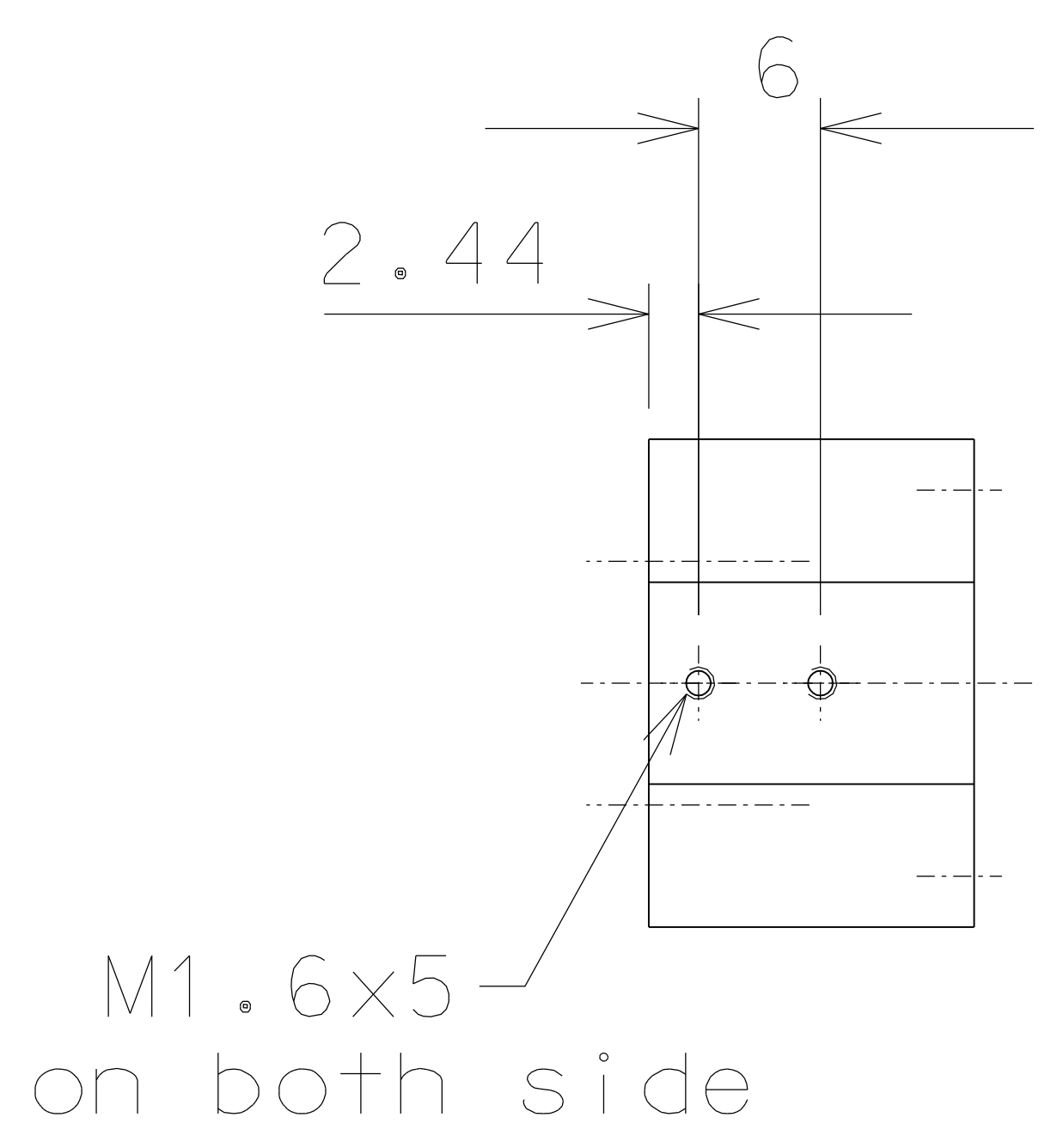


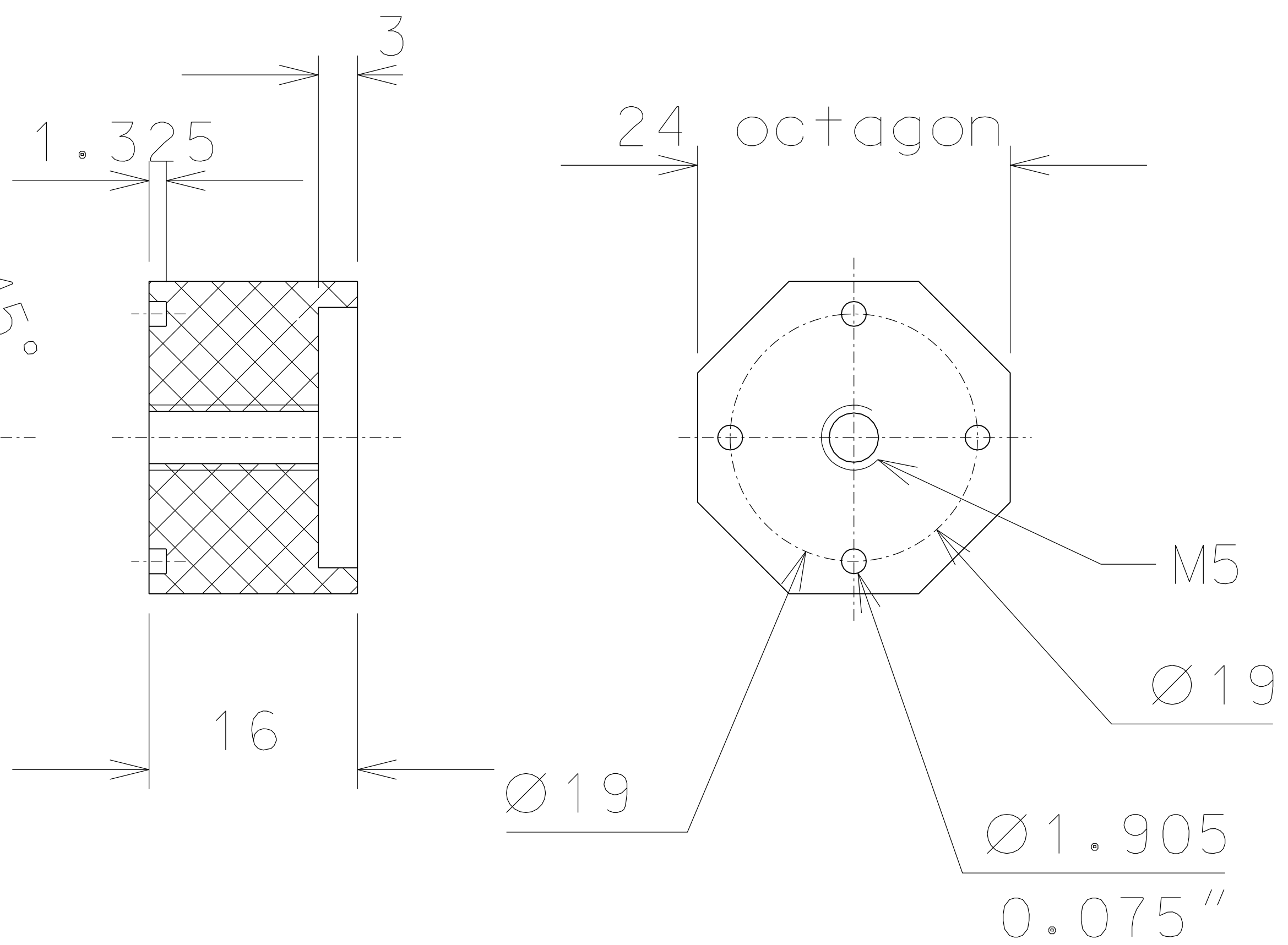
12



8

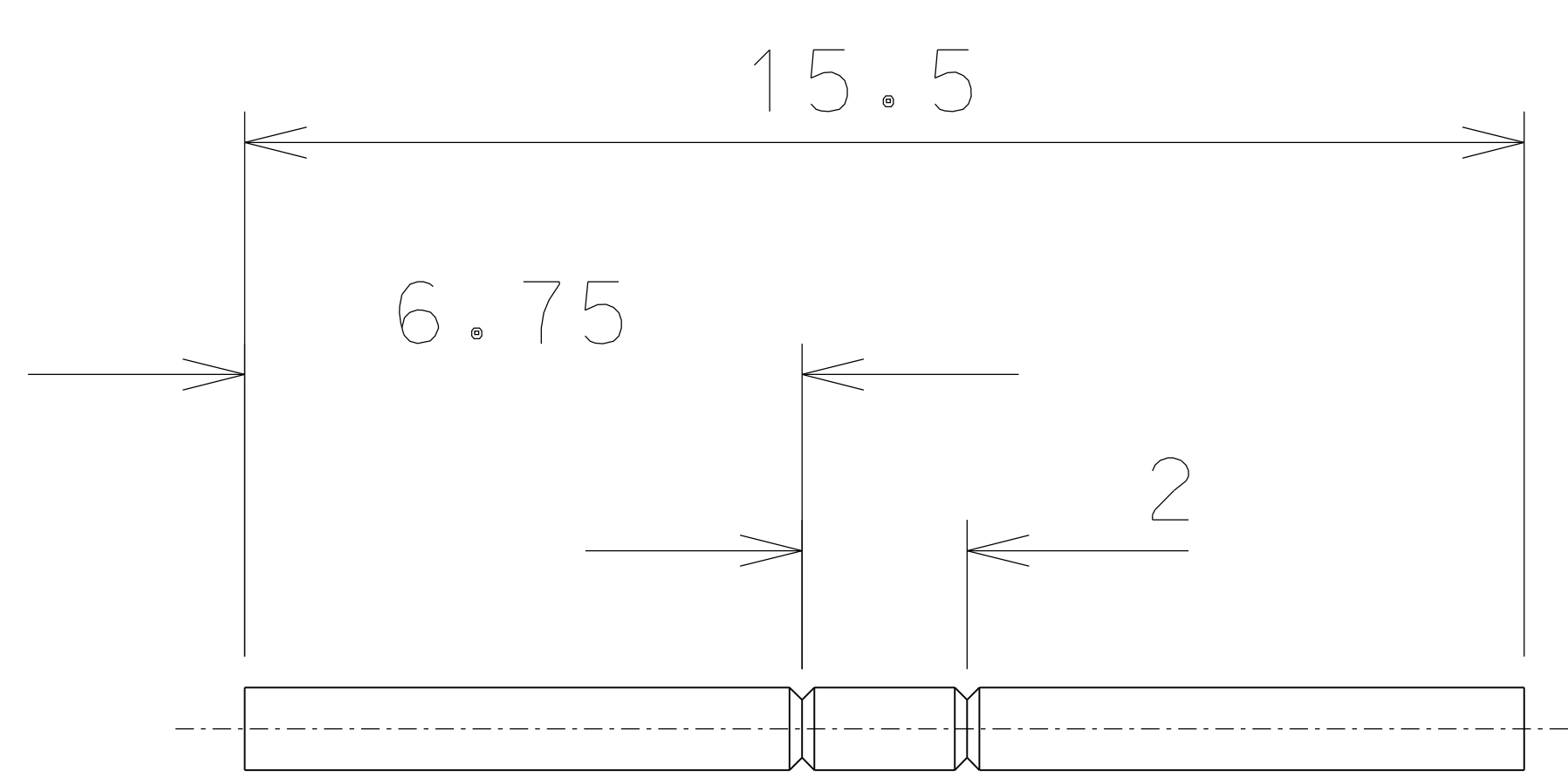


10

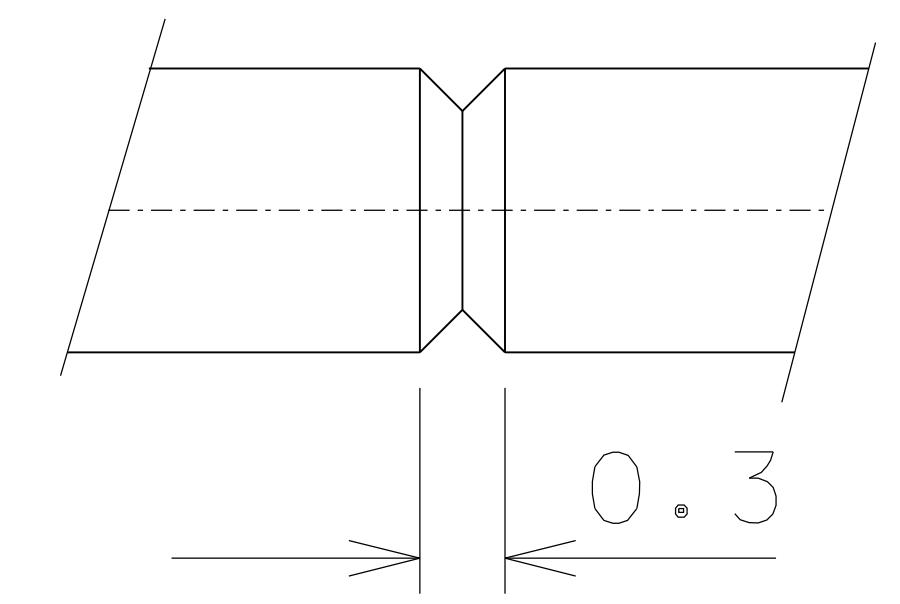


Screws of inox

detail	type	n°piec.
9	nut M5	16
10	set screw 10-32x 1/2" (brass)	4
12	self tapping screw M2x8	4
6	fillister head M1.6x2.5	32
7	fillister head M2.5x8	16
5	socket head M3x16	4
1-3-4	socket head M4x16	38
Screw's table		



13



gold plated

ref.	note	date	signature
modifications			
13	10	AISI 304	1/1
12	2	UHFC copper	1/1
10	2	peek	1/1
8	8	peek	4/1
ref.	pieces	mat. and treatments	scale

General machining tolerances UNI 5307-63									
Dimensions	< 6	>6-30	>30-120	>120-315	>315-1000	>1000-2000	>2000-4000	> 4000	
linear Toll.	±0.1	±0.2	±0.3	±0.5	±0.8	±1.2	±2	±3	
angular Toll.	±1	±30'	±20'	±10' referred to the shortest side					
				LIGO PROJECT				designed for <b>R.De Salvo</b>	
				MINI-TNI DETAILS				draw. by <b>G.Gennaro-PRMEC</b>	
date 13-10-08		scale 1/1							
LIGO-D081035-00-D		detail from 031 A 3							