

NOTES:

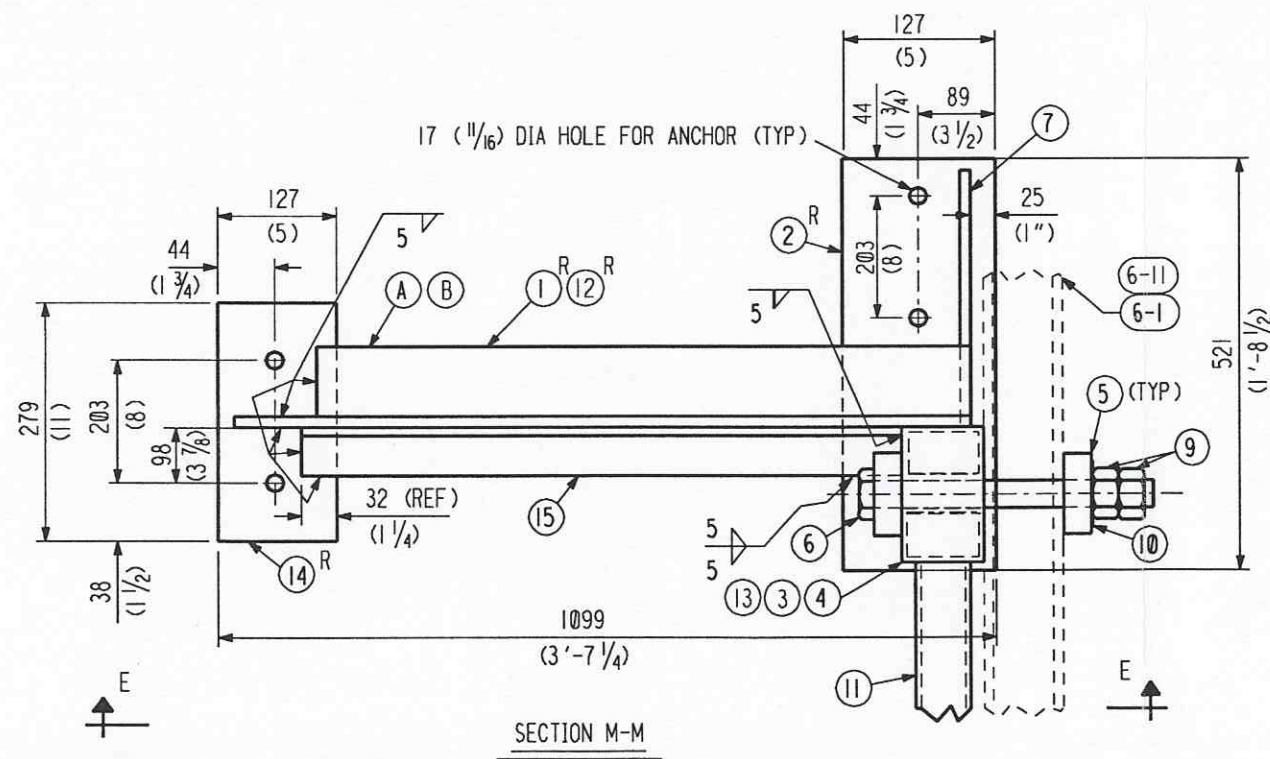
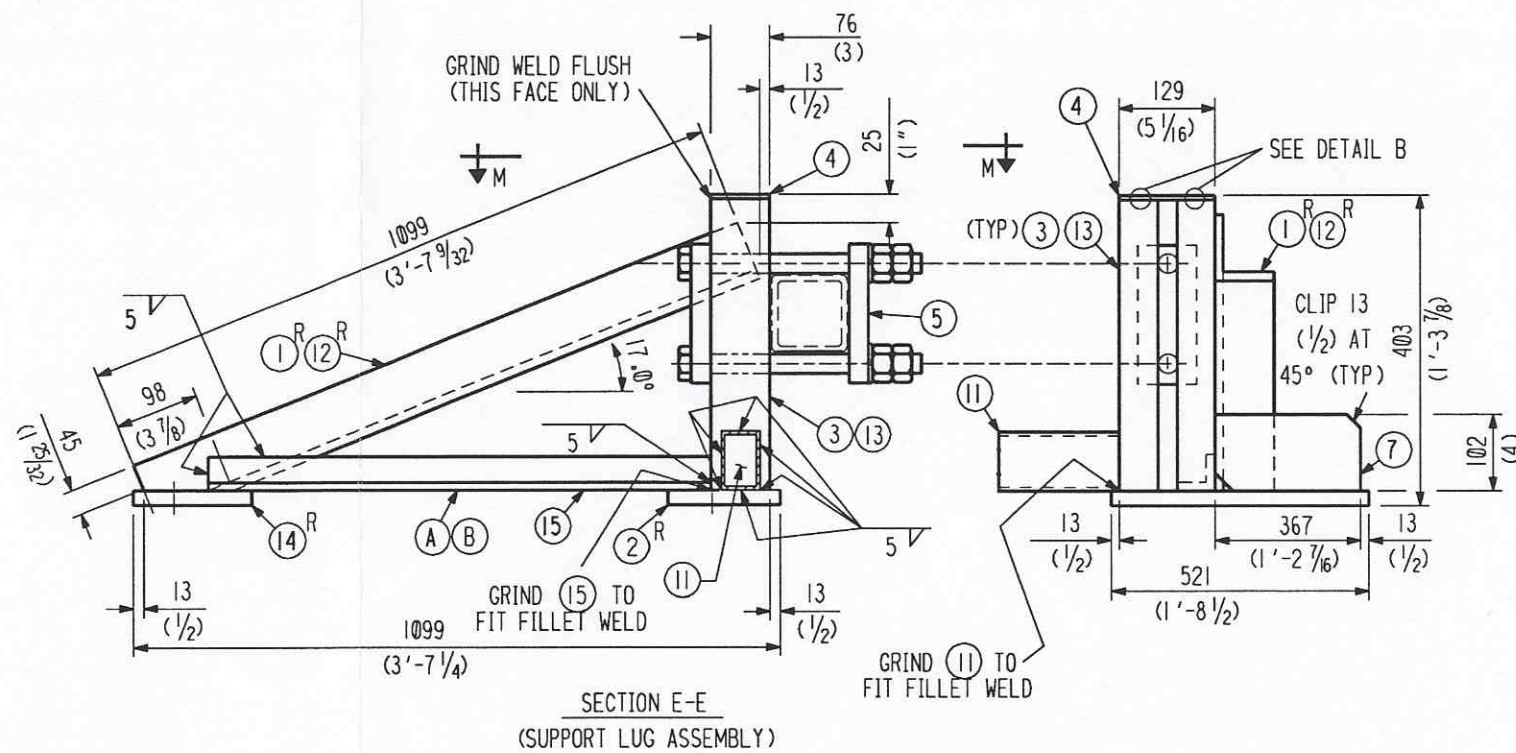
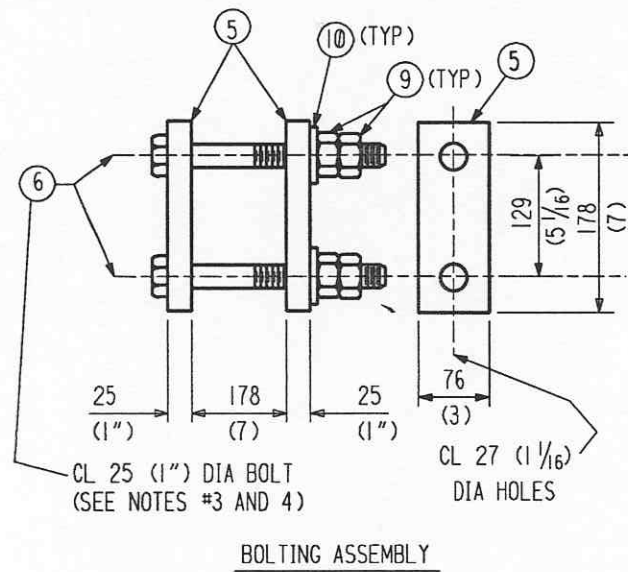
1. WORK THIS DWG WITH DWG #6 AND 7.
2. BILLED FOR ONE (1) FIXED SUPPORT. TOTAL OF (16) FIXED SUPPORTS NEAR TERM. AND (376) FIXED SUPPORTS AWAY FROM TERMINATION REQUIRED.
3. LUBRICATE BOLT THREADS AND BEARING SURFACE OF NUTS WITH LOCTITE NICKEL ANTI-SIEZE 771.
4. TIGHTEN BOLTS USING TURN OF THE NUT METHOD PER AISC (2/3 TURN).
5. PROVIDE TUBULAR MEMEBERS (THAT ARE CLOSED ON THE ENDS) WITH 6 (1/4) DIA. HOLES OR 13 (1/2) DIA. RATHOLES ON ANY TWO OPPOSITE SIDES AT TUBE ENDS AS REQUIRED FOR GALVANIZING.

INDICATES CHANGE FROM PREVIOUS ISSUE

SHIP PC	MARK	ASSM PC	DESCRIPTION	LENGTH MM	SPEC	ID
1	8-A		FIXED SUPPORT LUG (AWAY FROM TERM.)		M4	
	8-1 R/L	2	L 76 X 76 X 5 X SK (3 X 3 X 3/16 X 3'-7 9/32)	1099	A36	C
	8-2 R/L	2	BAR 127 X 13 (5 X 1/2 X 1'-8 1/2 LONG) W/ HOLES	521	A36	C
	8-3	4	TUBE 76 X 50 X 5 (3 X 2 X 3/16 X 1'-3 1/8)	384	*	C
	8-4	2	PL 76 X 6 (3 X 1/4 X 5 1/16)	129	A36	C
	8-7	2	PL SK X 13 (1/2)		A36	C
	8-11	1	TUBE 76 X 50 X 5 (3 X 2 X 3/16 X 2'-2 15/16)	684	*	C
	8-14 R/L	2	BAR 127 X 13 (5 X 1/2) W/ HOLES	279 (11)	A36	C
	8-15	2	L 51 X 51 X 6 (2 X 2 X 1/4 X 3'-0)	914	A36	C
1	8-B		FIXED SUPPORT LUG (NEAR TERMINATION)		M4	
	8-2 R/L	2	BAR 127 X 13 (5 X 1/2 X 1'-8 1/2 LONG) W/ HOLES	521	A36	C
	8-4	2	PL 76 X 6 (3 X 1/4)	129	A36	C
				(5 1/16)		
	8-7	2	PL SK X 13 (1/2)		A36	C
	8-11	1	TUBE 76 X 50 X 5 (3 X 2 X 3/16 X 2'-2 15/16)	684	*	C
	8-12 R/L	2	L 76 X 76 X 7 X SK (3 X 3 X 1/4 X 3'-7 9/32)	1099	A36	C
	8-13	4	TUBE 76 X 50 X 7 (3 X 2 X 1/4 X 1'-3 1/8)	384	*	C
	8-14 R/L	2	BAR 127 X 13 (5 X 1/2) W/ HOLES	279 (11)	A36	C
	8-15	2	L 51 X 51 X 6 (2 X 2 X 1/4 X 3'-0)	914	A36	C
4	8-5		PL 76 X 25 THK (3 X 1) W/HOLES	178 (7)	A36	C
4	8-6		BOLT 25 (1") DIA HVY HEX THREAD LENGTH = 127 (5)	292	***	Ac
8	8-8		EXPANSION ANCHORS 15 (5/8) DIA HILTI KB II 58-6 W/ 1Ø2 (4) EMBEDMENT DEPTH OR EQ.	152 (6)	CS ZINC- PLATED	C
8	8-9		NUT 25 (1") DIA HVY HEX		**	Ac
4	8-10		WASHER 25 (1") DIA		F436	Ac
			* = A500 GR.B			
			** = A563 - C3 OR DH3 (NOT GALV.)			
			*** = A325 TYPE 3 (NOT GALV.)			
			M4 = SEE SPEC C-SUPT-1			

<b>APPROVED</b>	
<i>M. Tellalian</i>	6-28-96
CBI	DATE
_____	_____
CALTECH	DATE

BY: DTR 6-28-96 CHKD: MTL 3-11-96 DATE: 3-11-96		REV. ENTIRE DRAWING TO INCORPORATE NEW DESIGN	
BY: DTR 6-28-96 CHKD: MTL 6-28-96 DATE: 6-28-96		ADDED MATERIAL ID FOR PC. 9. REV. SPEC. FOR PC. 10.	
BY: DTR 5-18-96 CHKD: CST 5-18-96 DATE: 5-18-96		REV. ENTIRE DRAWING	
<b>CBI</b>			
LIGO BEAM TUBE HANFORD, WA AND LIVINGSTON, LA BEAM TUBE FIXED SUPPORT SUPPORT LUG ASS'Y & SECTION DETAILS			
CUSTOMER'S NO BY WAW CHKD DET DATE 3-8-94 M.L. TELLALIAN ENGINEERING ASSIGNED		SUPPLIER'S / PURCHASER'S NO CONTRACT NO 953571 DWG 8 SHT 1 REV 8 D	
0950037-08-B			



<b>APPROVED</b>	
<i>M. Tellalian</i>	6-28-96
CBI	DATE
CALTECH	DATE

<b>CBI</b>		<small>SUPPLIER'S / PURCHASER'S NO</small>	
LIGO BEAM TUBE HANFORD, WA AND LIVINGSTON, LA			
BEAM TUBE FIXED SUPPORT SUPPORT LUG ASS'Y & SECTION DETAILS			
<small>CUSTOMER'S NO</small>		<small>CONTRACT NO</small>	
BY WAW CHKD DET DATE 3-8-94		953571	
M.L. TELLALIAN		DWG 8 REV	
ENGINEERING ASSIGNED		SHT 2 REV 8D	

55710208.DGN

INDICATES CHANGE FROM PREVIOUS ISSUE