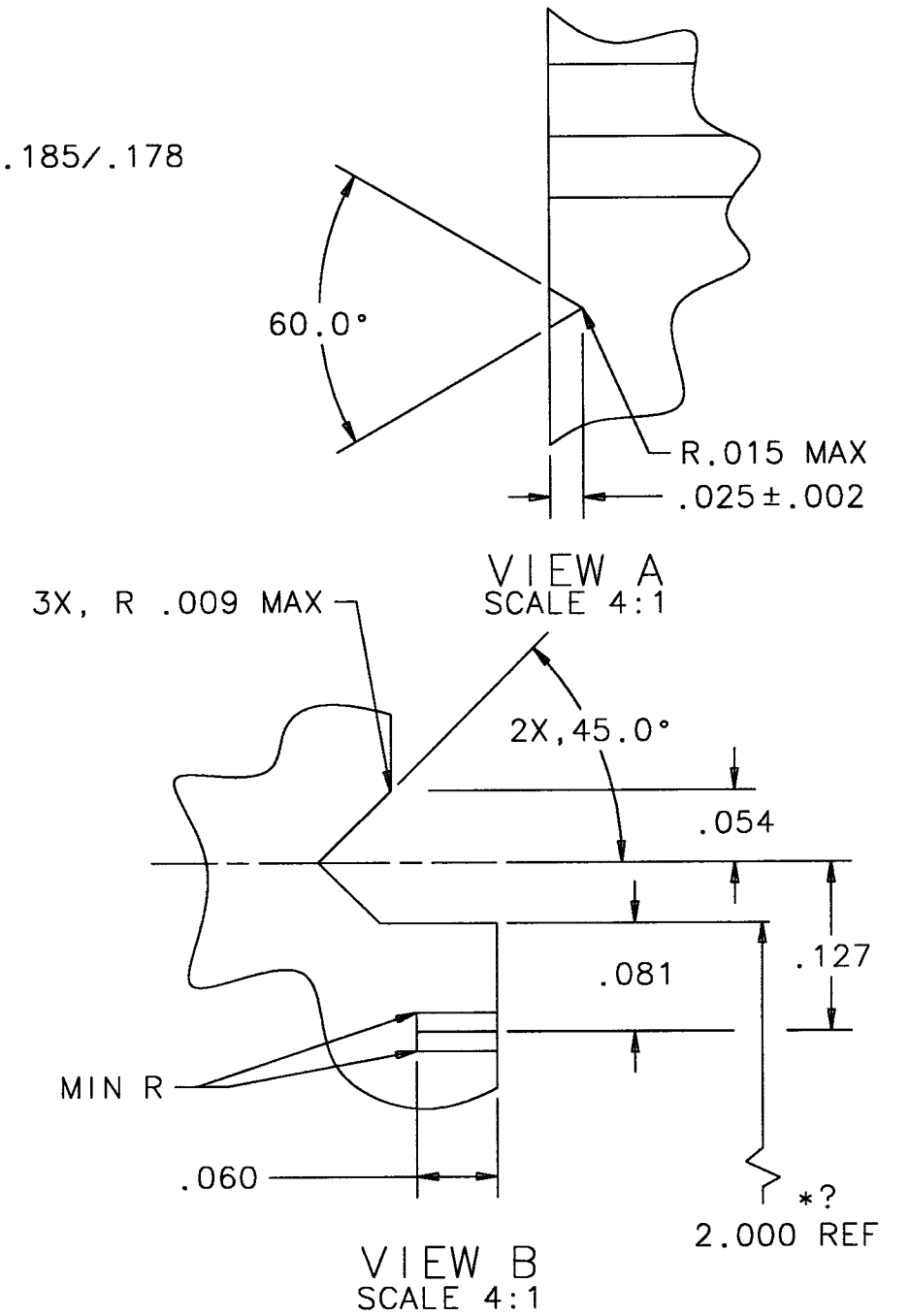
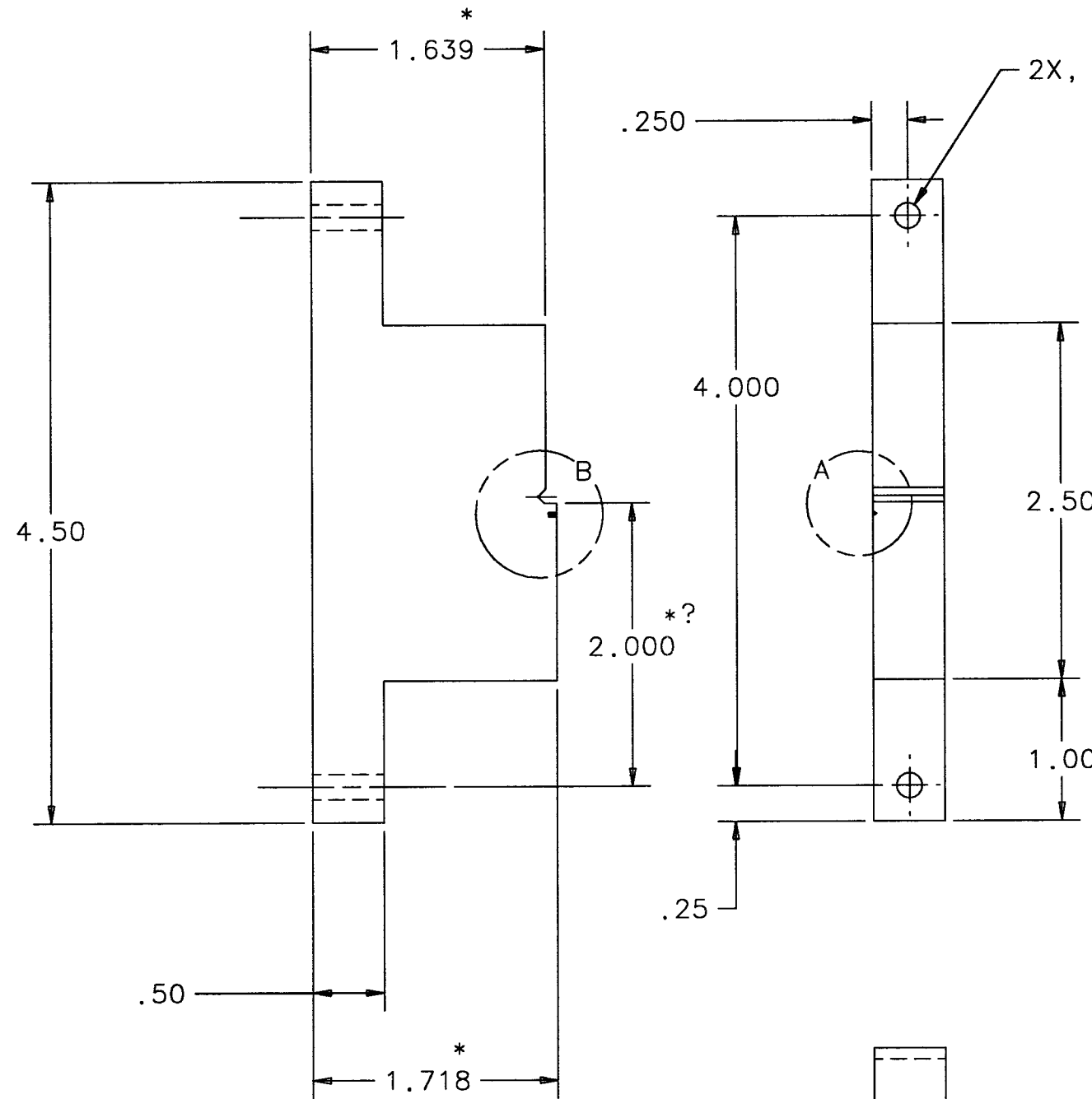
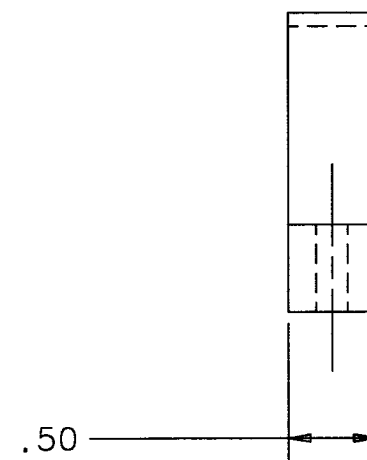


NOTES:

1. DIMENSIONS IN INCHES.
2. TOLERANCES: XX: ± 0.01
XXX: ± 0.005
ANGLES: $\pm 1^\circ$
3. MATERIAL: ALUM 6061-T6
4. BREAK ALL SHARP EDGES.



* DIMENSIONS THAT WILL CHANGE



FIXTURE, GUIDE RODS AND
SIDE ACTUATORS, BONDING
END TEST MASS
TWO DEGREE WEDGE
4" ϕ X 3.5" THICK

RIGHT BLOCK
D950160-01