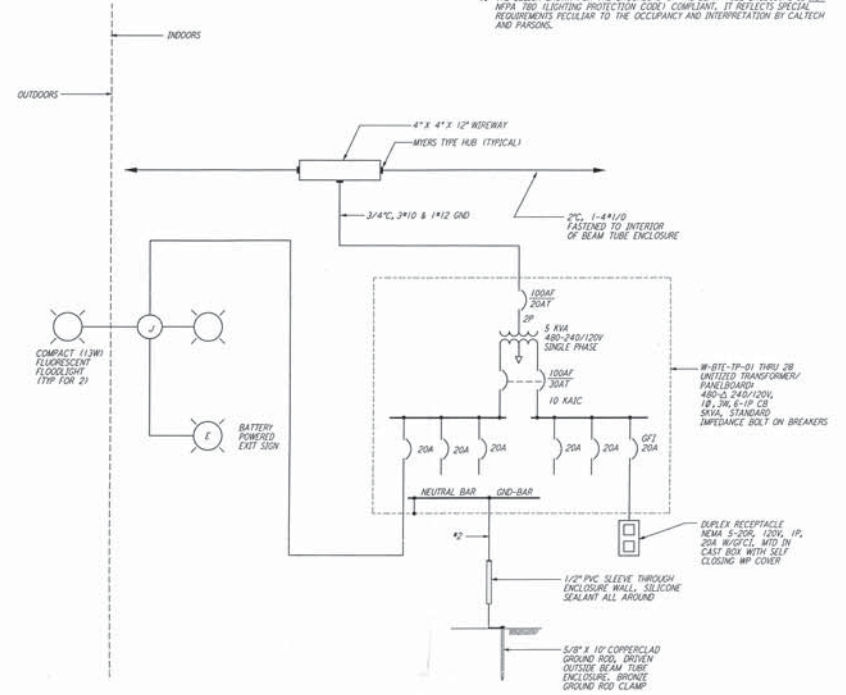
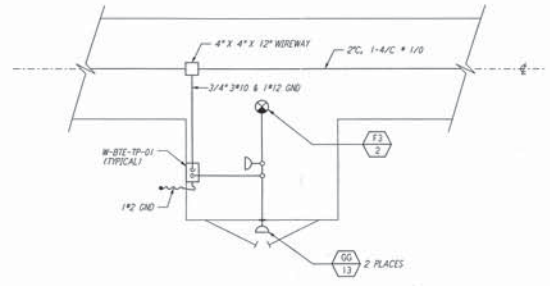


ELECTRICAL POWER CABLE AND CONDUIT/
 BRIDGING ACROSS BTE / BLDG JOINT



BTE SERVICE ENTRANCE
 ELECTRICAL POWER PANEL AND LIGHTS



BTE PLAN

NOTES:

1. THE DESIGN SHOWN FOR THE GROUNDING OF THE BEAM TUBE ENCLOSURE IS NOT NFPA 700 LIGHTING PROTECTION CODE COMPLIANT. IT REFLECTS SPECIAL REQUIREMENTS PECULIAR TO THE OCCUPANCY AND INTERPRETATION BY CALTECH AND PARSONS.

This document and the design it covers are the property of PARSONS. They are loaned only with the borrower's expressed written agreement that they will not be reproduced, copied, loaned, exhibited, or used in any other way, except by written consent from PARSONS to the borrower.

NO.	DATE	BY	CHKD	ENGR	PROJ	DESCRIPTION
B	4-19-96	J.G.	J.C.	J.C.	TOM	FINAL DESIGN REVIEW & BID
A	10-31-95					PRELIMINARY DESIGN REVIEW

DRAWN	J.G.
CHECKED	
ENGINEER	
PROJ	

PARSONS
 100 WEST WALNUT STREET
 PASADENA, CALIFORNIA

LIGO
 CALIFORNIA INSTITUTE OF TECHNOLOGY
 MASSACHUSETTS INSTITUTE OF TECHNOLOGY

LASER INTERFEROMETER
 GRAVITATIONAL-WAVE OBSERVATORY
 SITE NO. 1 - HANFORD, WASHINGTON

TITLE	NONE	PP150969	8094
PROJECT	WA-E-403		