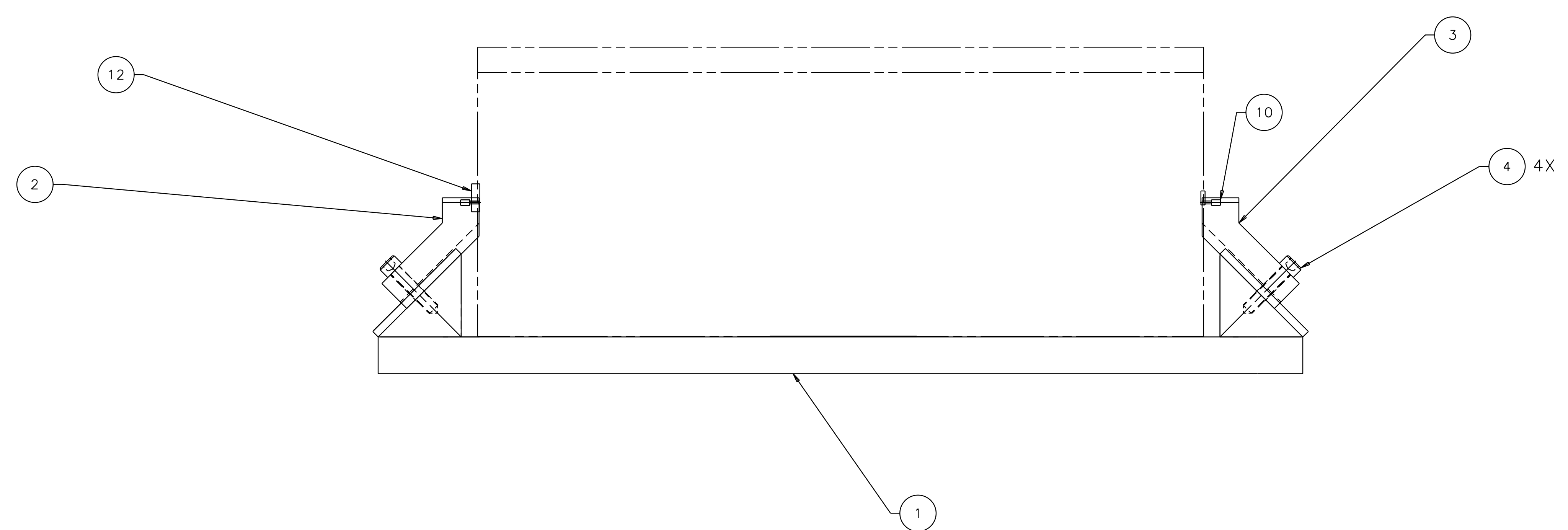
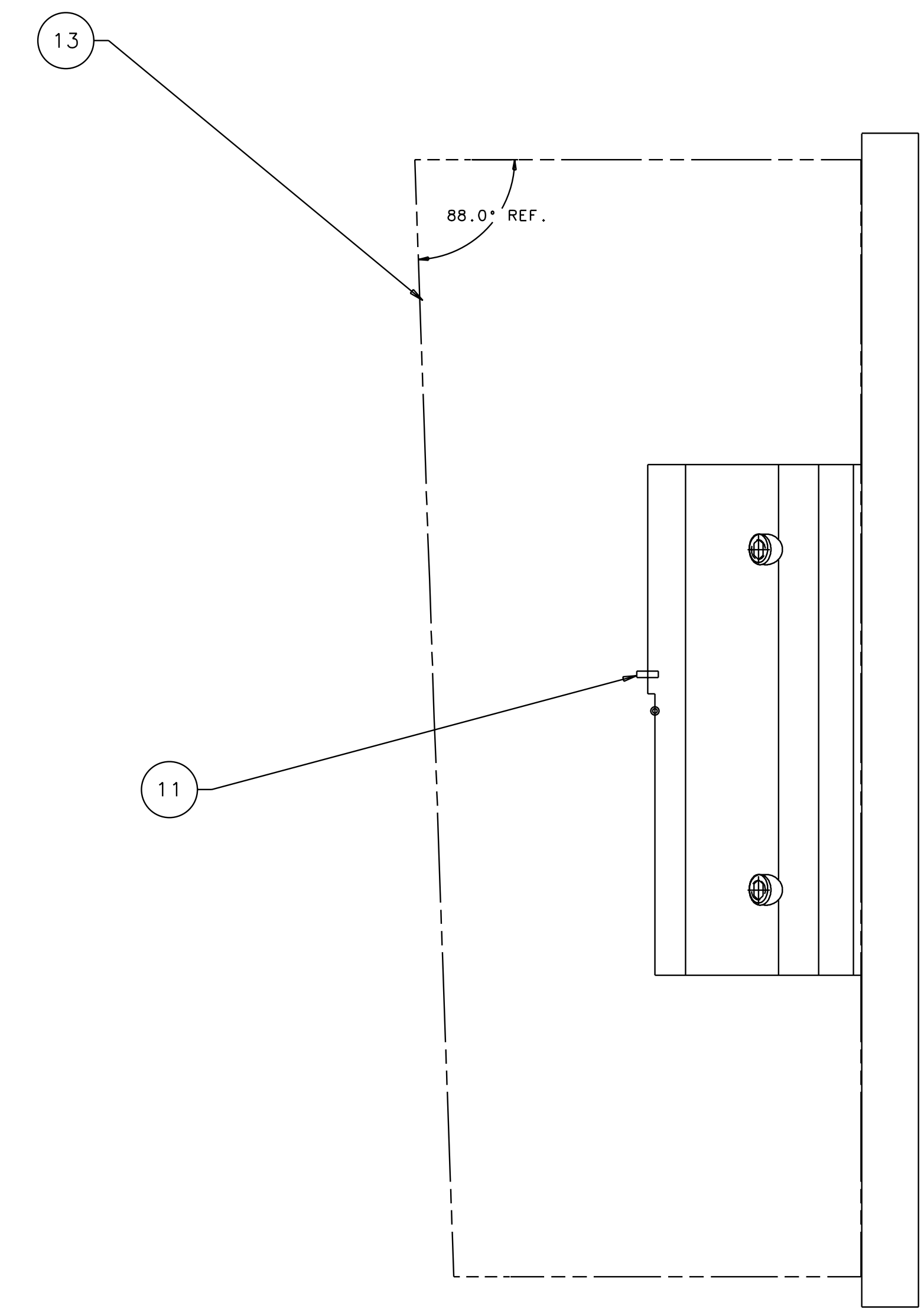
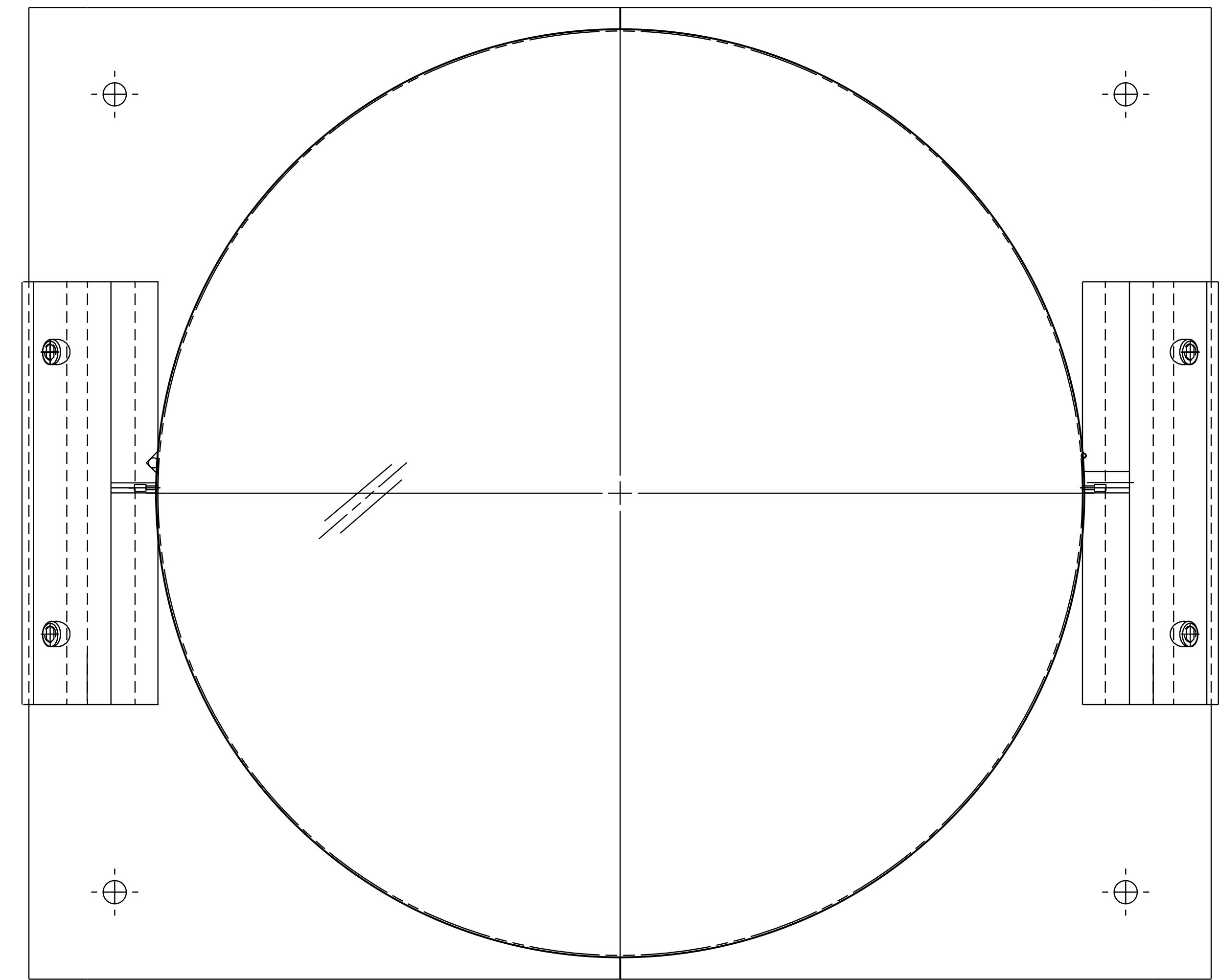


1 2 3 4 5 6 7 8

NOTES: (UNLESS OTHERWISE SPECIFIED)
 1. THIS FIXTURE IS TO BE USED WITH AN OPTIC THAT IS $\phi 9.84''$ X $3.94''$ THICK ($\phi 25\text{cm}$ x 10cm THICK) WITH A 2 DEGREE, THICK-SIDE-UP ORIENTED WEDGE.
 2. CLOSE SLIP FIT.
 3. THE RIGHT BLOCK, TOP IS USED TO MOUNT THE GUIDE ROD AND THE LEFT BLOCK, TOP IS USED TO MOUNT THE WIRE STANDOFF.
 4. USE OF THIS FIXTURE IS COVERED IN LIGO-E970154.
 5. SPECIFICATIONS COVERING THE FABRICATION OF THIS ASSEMBLY ARE DETAILED IN LIGO-E970155, THE LARGE OPTIC SUSPENSION (LOS) FIXTURES AND COMPONENTS FABRICATION SPECIFICATION.

REV	DATE	DRAWN BY	CHECKED	DCC	DCN/DESCRIPTION
A	2/13/98	J. Hazel			E980016/INITIAL RELEASE
B	8-14-98	J. Romie			E980227/SEE DCN
C	9-22-98	J. Romie			E980249/ADD HOLES ON BASE
D	2-9-01	J. Romie			E010027/CHANGE OPTIC PICTORIAL



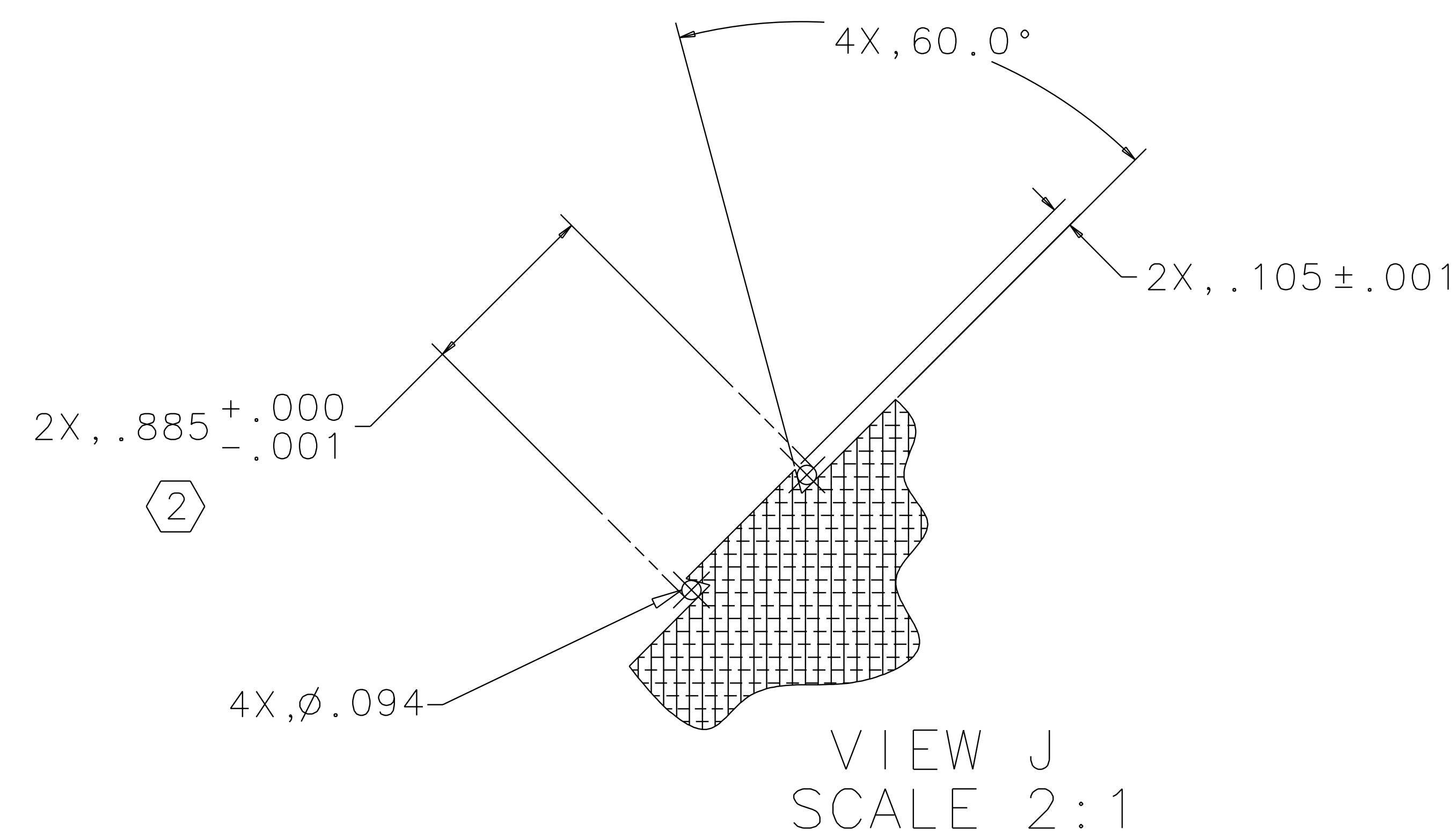
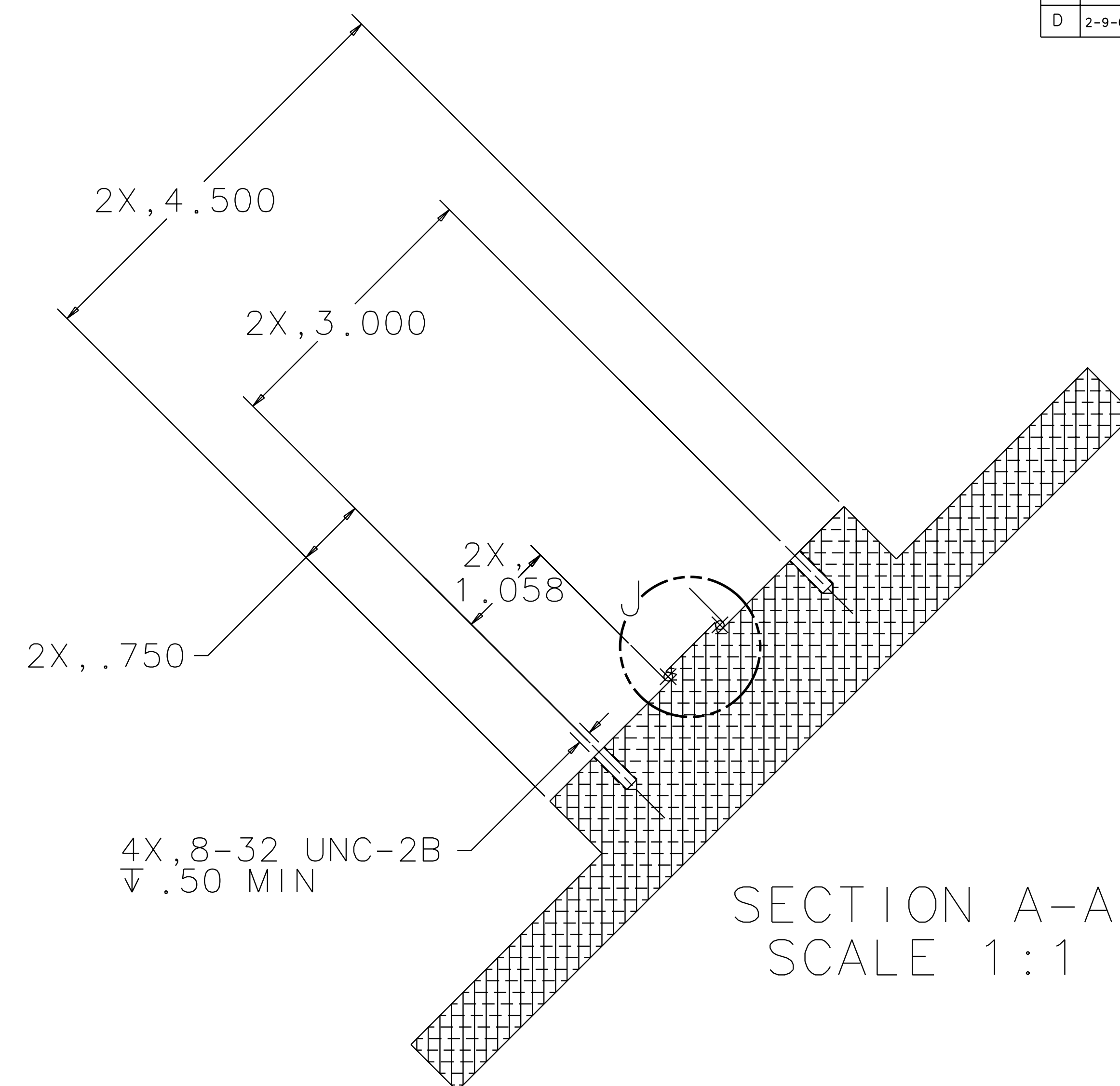
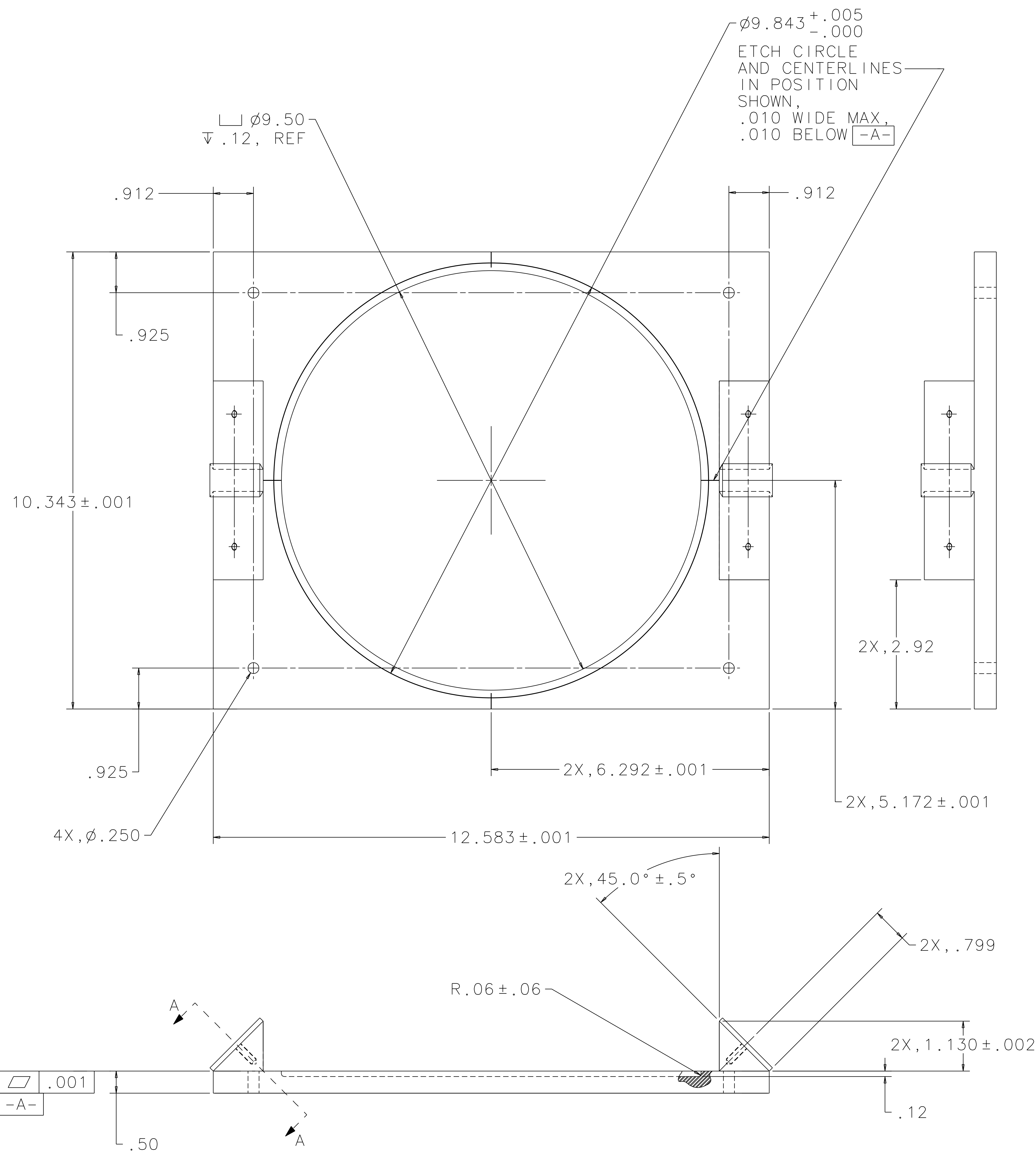
REF	QTY	PART OR IDENTIFYING NO.	NOMENCLATURE OR DESCRIPTION	MATERIAL SPECIFICATION	ITEM NO.
			OPTIC		13
			WIRE STANDOFF		12
			GUIDE ROD		11
			MAGNET/STANDOFF ASSEMBLY		10
					9
					8
					7
					6
					5
4			SCREW_SHCS_#8-32 x .75	STAINLESS STEEL	4
1		DETAIL, SHEET 3	RIGHT BLOCK, TOP		3
1		DETAIL, SHEET 3	LEFT BLOCK, TOP		2
1		DETAIL, SHEET 2	BASE PLATE		1

UNLESS OTHERWISE SPECIFIED DIMENSIONS ARE IN INCHES		APPROVALS		DATE	LIGO CALIFORNIA INSTITUTE OF TECHNOLOGY MASSACHUSETTS INSTITUTE OF TECHNOLOGY	
FRACTIONS	DECIMALS	DECIMALS	ANGLES		TITLE	
0.XX \pm 0.01		J. Hazel		5/96	GUIDE ROD FIXTURE	
0.XXX \pm 0.005						
ANGLES \pm 0.5°						
DO NOT SCALE DRAWING						
NEXT ASSEMBLY		MATERIAL		FINISH		
D960132, D970560, D970507						
FILE LOCATION						
/home/dcc/docs/D960147.pdf						

SCALE	1/1	SHEET	1 OF 3
-------	-----	-------	--------

1 2 3 4 5 6 7 8

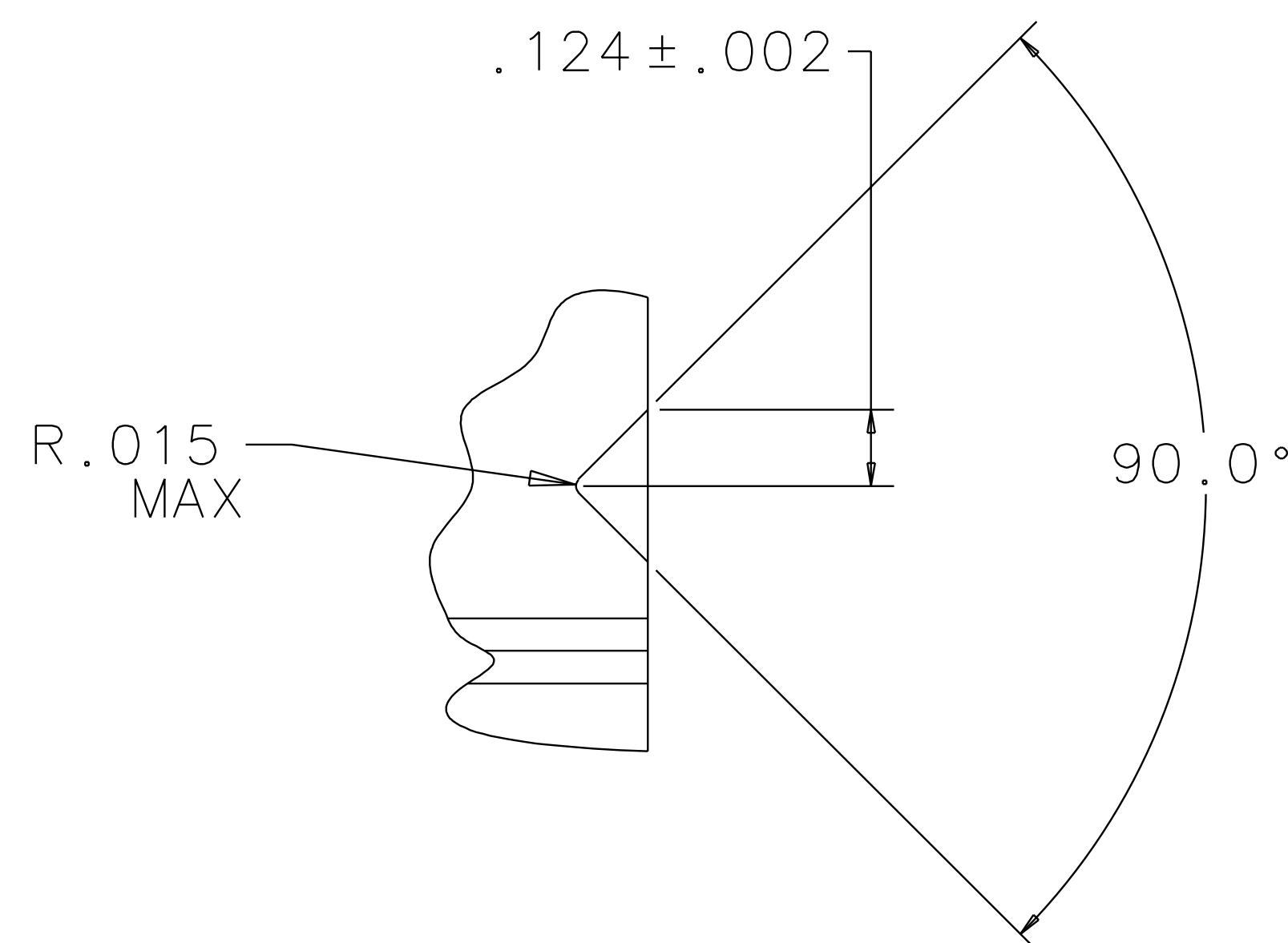
REV	DATE	DRAWN BY	CHECKED	DCC	DCN/DESCRIPTION
A	2/13/98	J. Hazel			E980016/INITIAL RELEASE
B	8-14-98	J. Romie			E980227/SEE DCN
C	9-22-98	J. Romie			E980249/ADD HOLES TO BASE
D	2-9-01	J. Romie			E010027/CHANGE OPTIC PICTORIAL



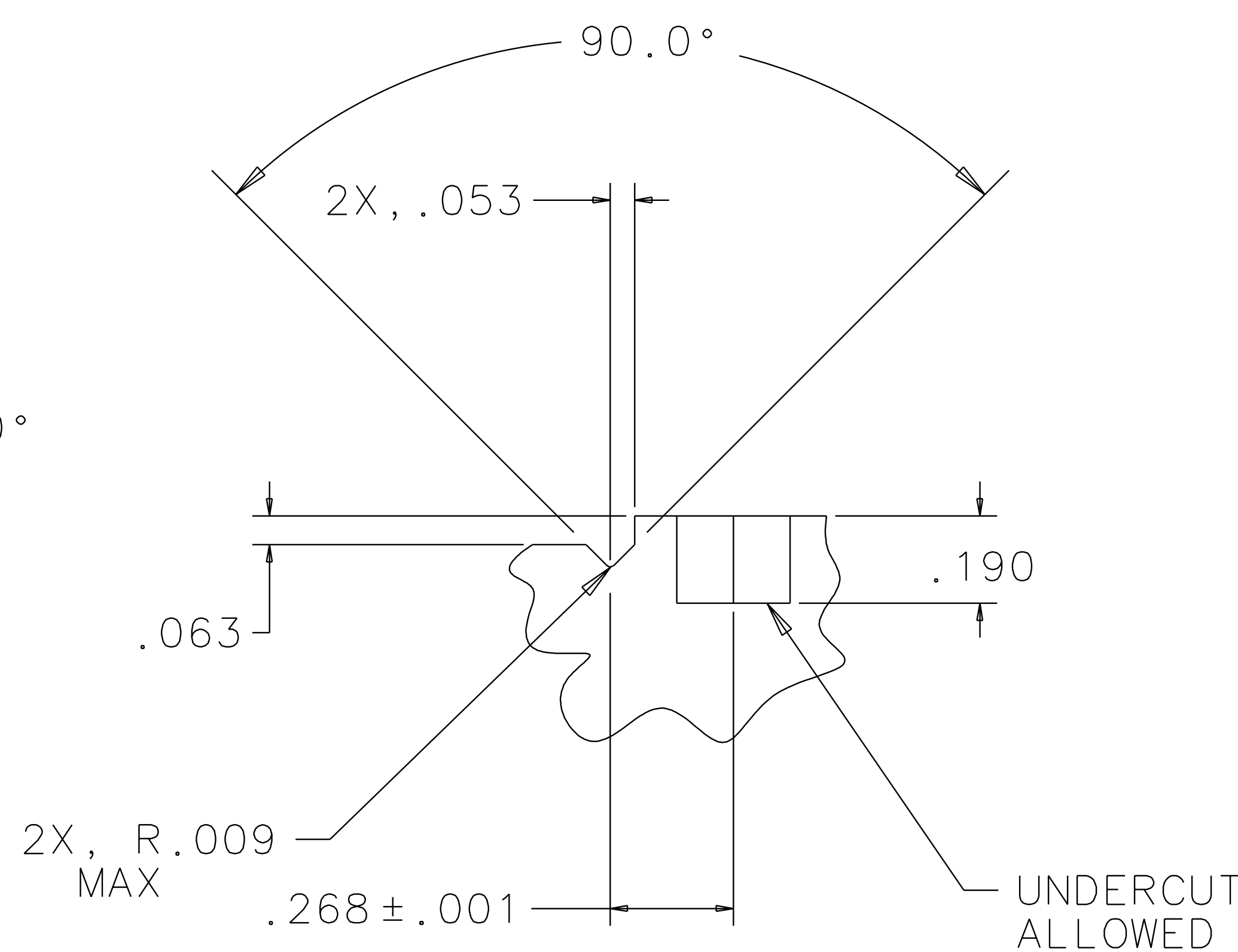
BASE PLATE
MATERIAL: 6061-T6 ALUM

QTY REQ	PART OR IDENTIFYING NO	NOMENCLATURE OR DESCRIPTION	MATERIAL SPECIFICATION	ITEM NO.
PARTS LIST				
UNLESS OTHERWISE SPECIFIED DIMENSIONS ARE IN INCHES				
TOLERANCES ARE:				
FRACTIONS	DECIMALS	ANGLES		
0.XX \pm 0.01				
0.XXX \pm 0.005				
		ANGLES \pm 0.5 $^\circ$		
DO NOT SCALE DRAWING				
APPROVALS		DATE	LIGO CALIFORNIA INSTITUTE OF TECHNOLOGY MASSACHUSETTS INSTITUTE OF TECHNOLOGY	
DRAWN J. Hazel		5/96	TITLE	
CHECKED			GUIDE ROD FIXTURE	
MATERIAL			SIZE	REV
FINISH			E	D
NEXT ASSEMBLY			SCALE	SHEET
FILE LOCATION			1:1	2 OF 3

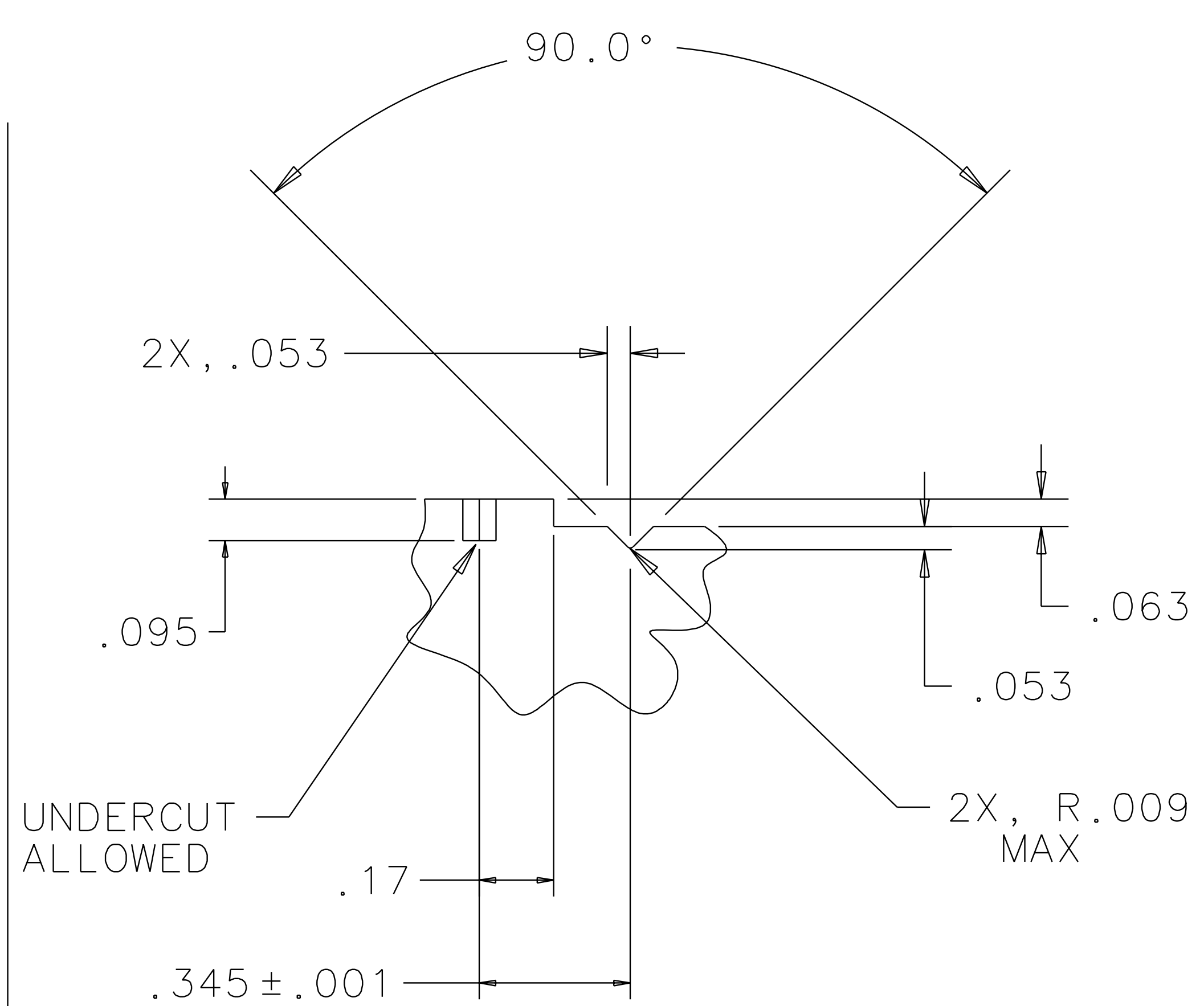
REV	DATE	DRAWN BY	CHECKED	DCC	DCN/DESCRIPTION
A	2/13/98	J. Hazel			E980016/INITIAL RELEASE
B	8-14-98	J. Romie			E980027/SEE DCN
C	9-22-98	J. Romie			E980249/ADD HOLES IN BASE
D	2-9-01	J. Romie			E010027/CHANGE OPTIC PICTORIAL



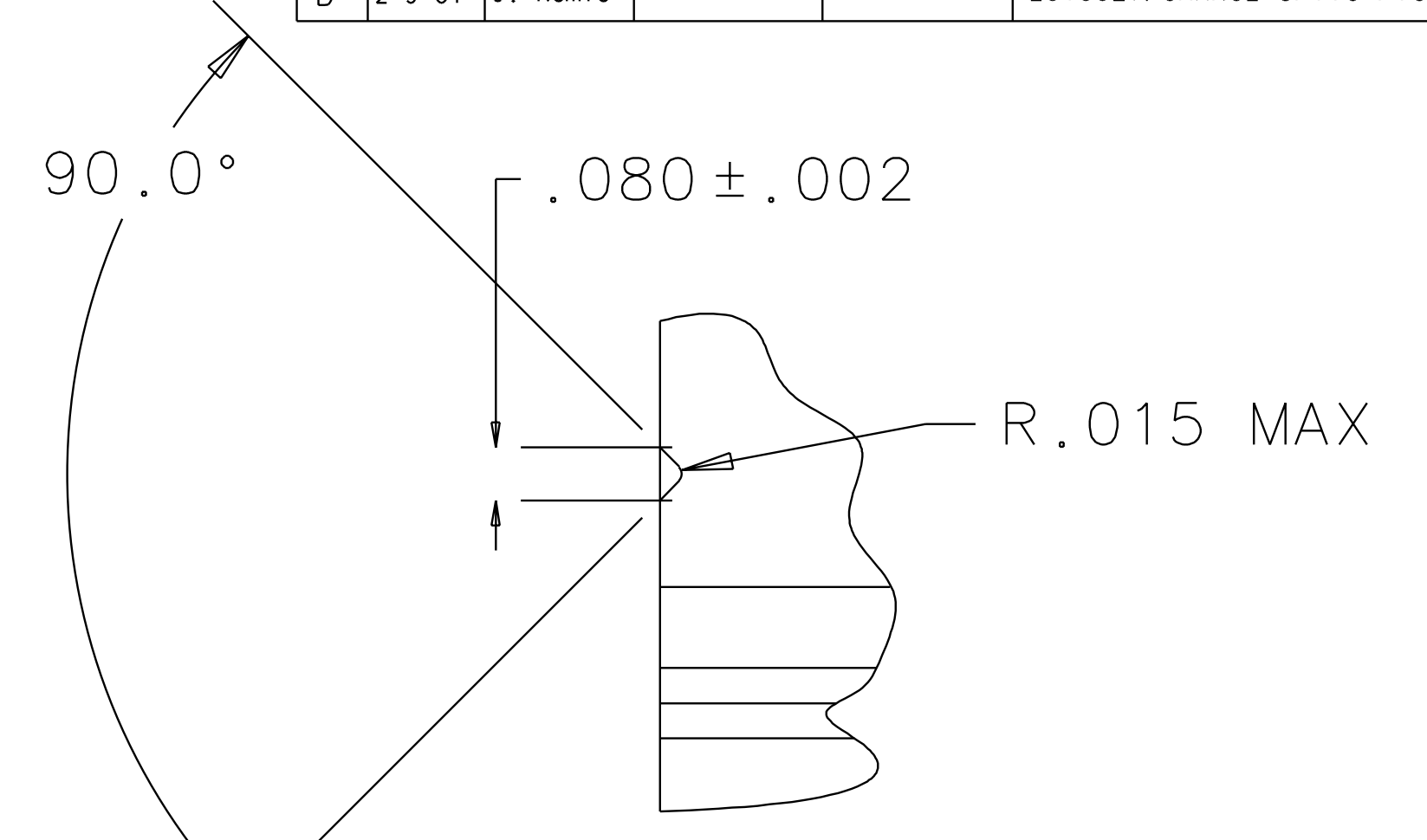
VIEW C
SCALE 4:1



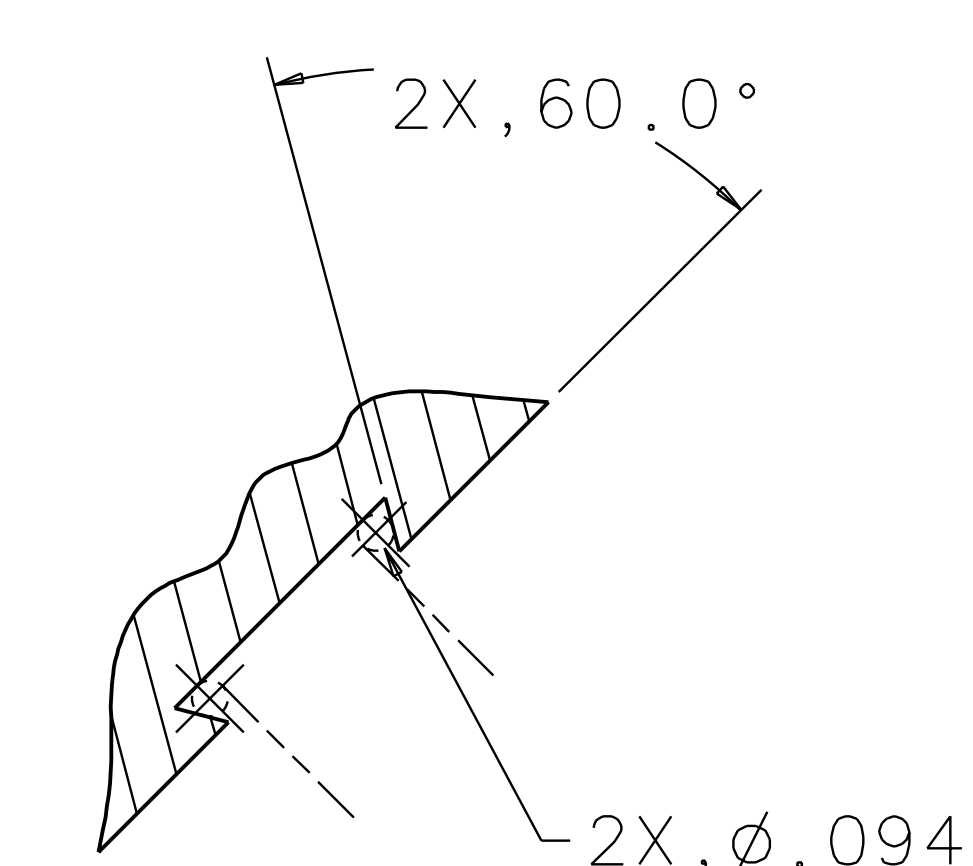
VIEW D
SCALE 4:1



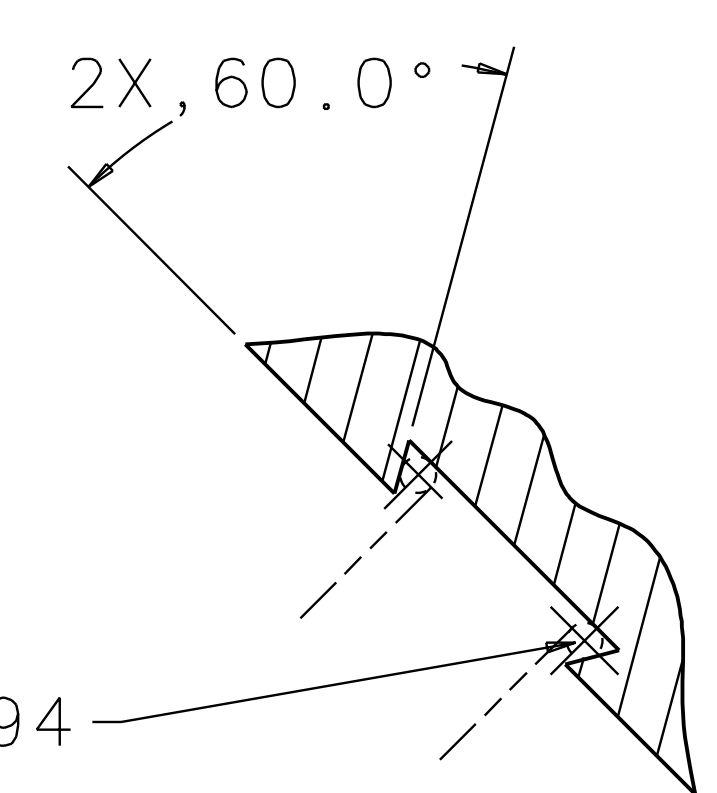
VIEW H
SCALE 4:1



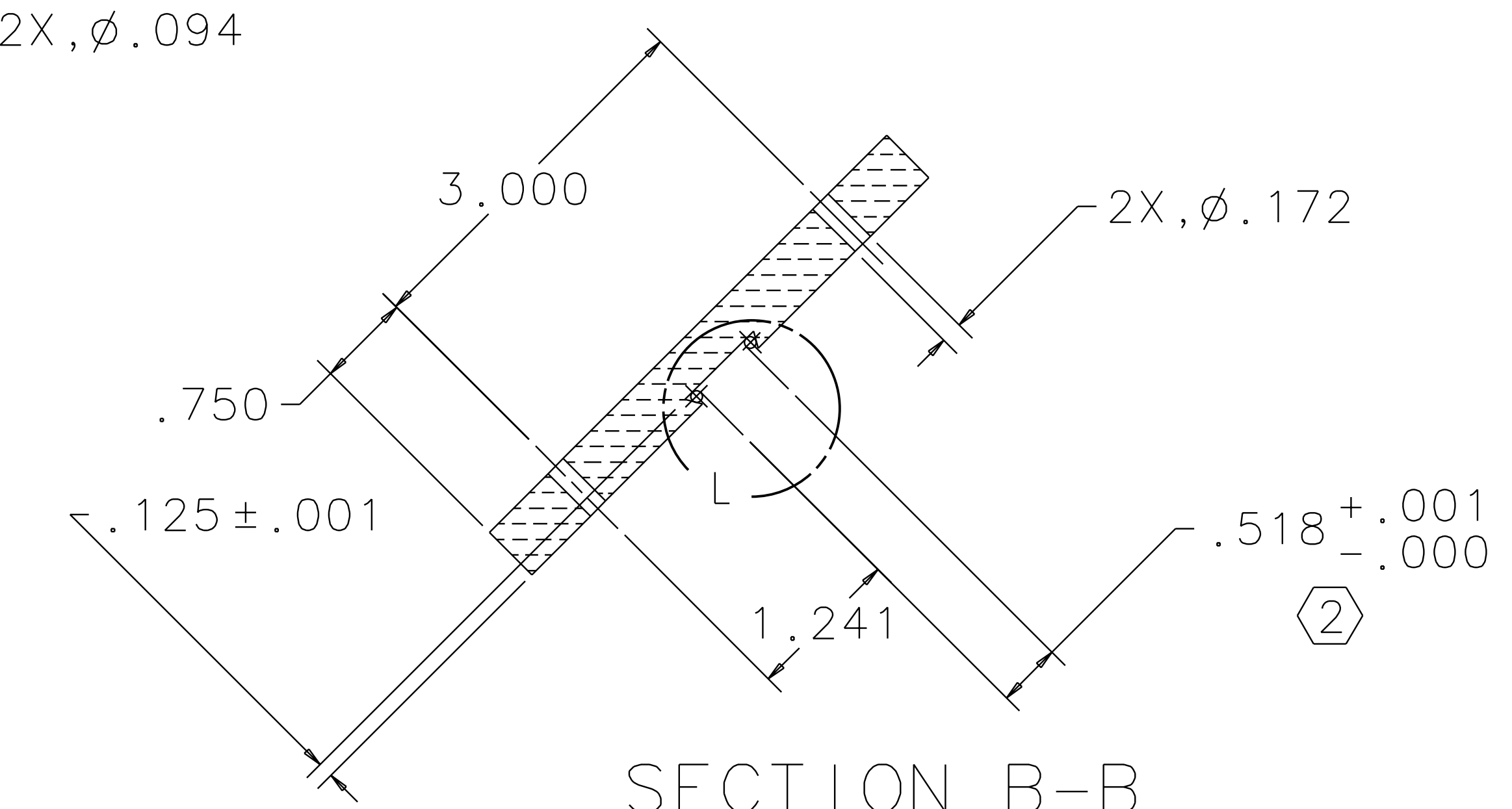
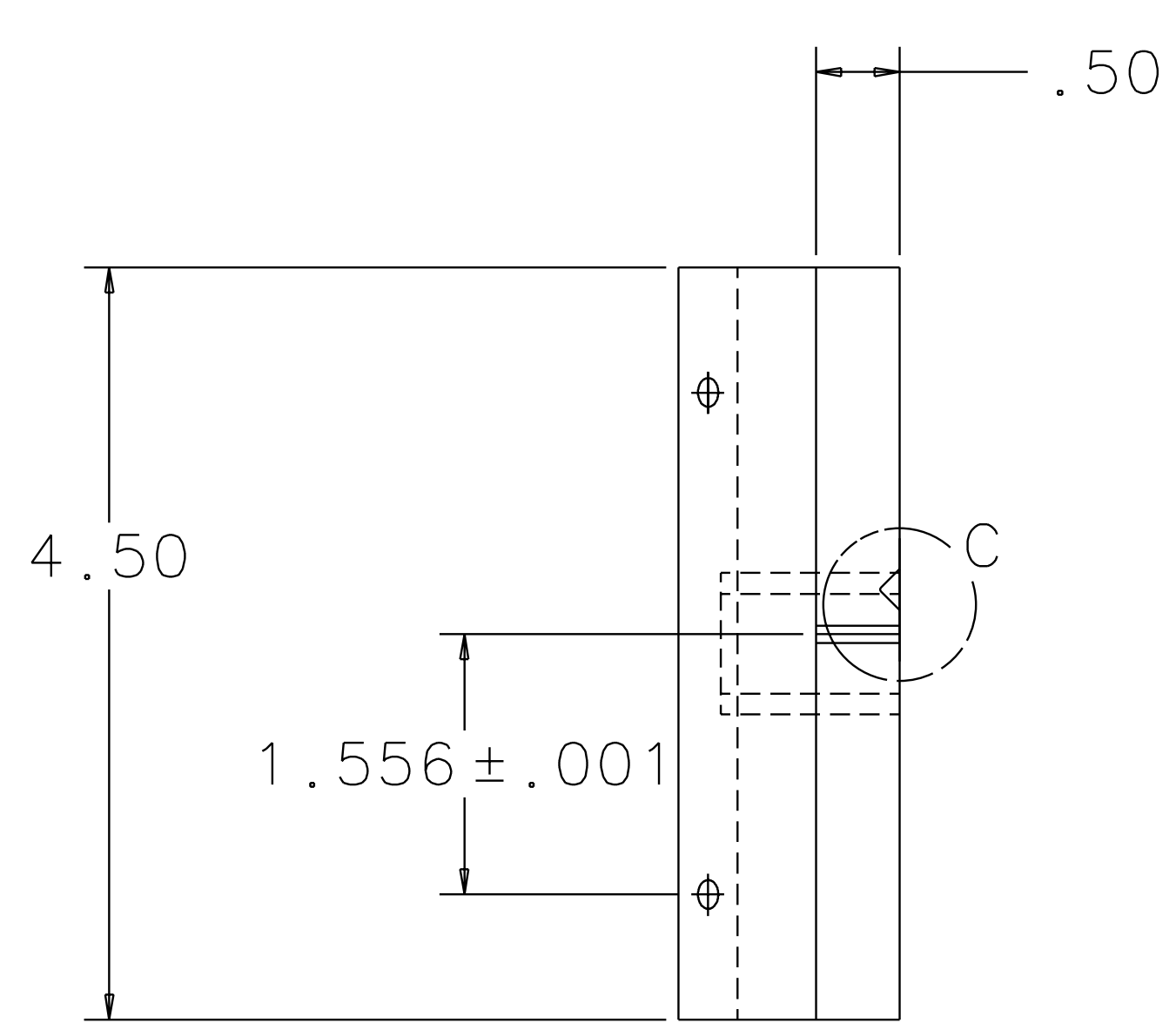
VIEW G
SCALE 4:1



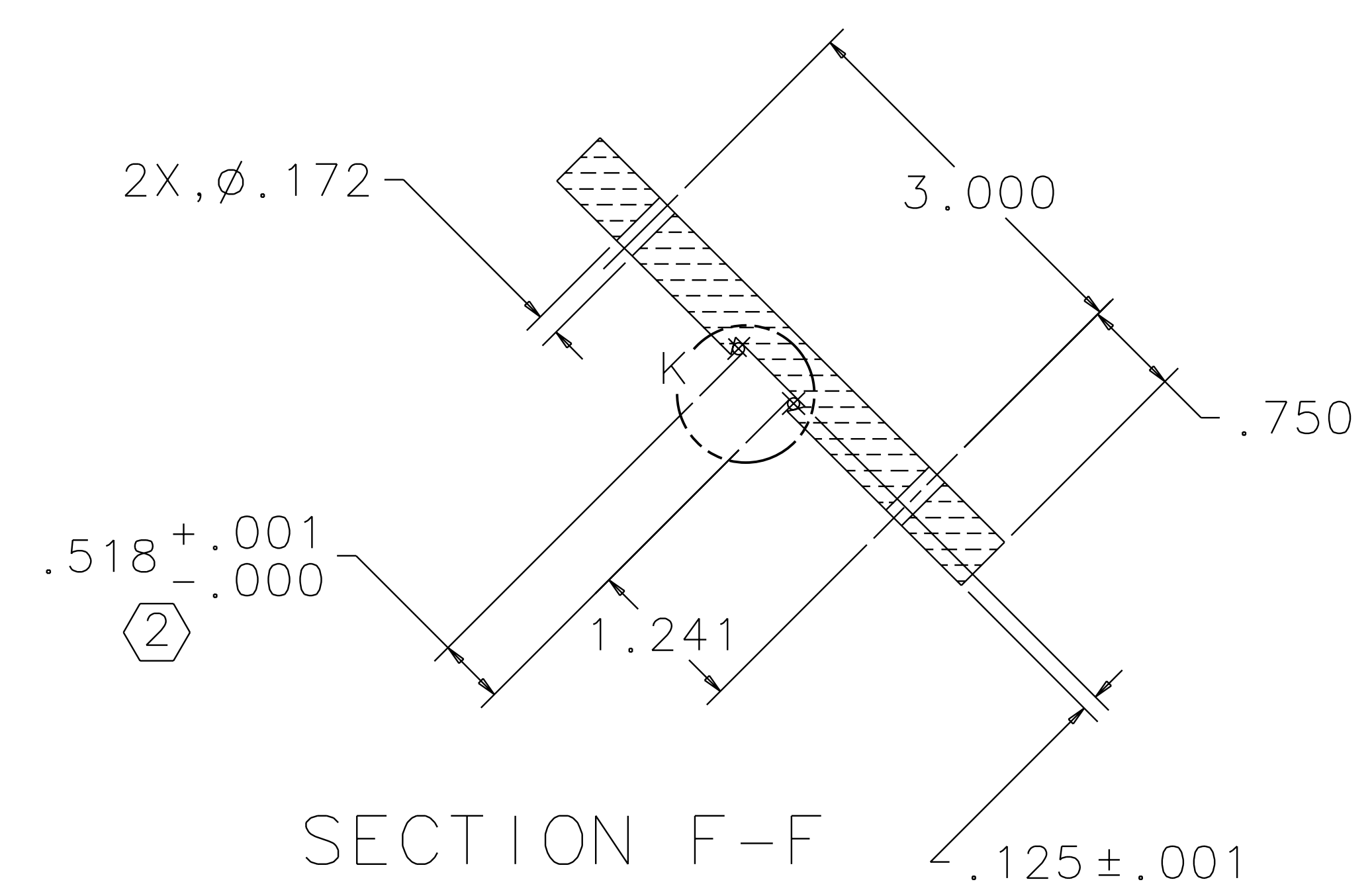
VIEW L
SCALE 2:1



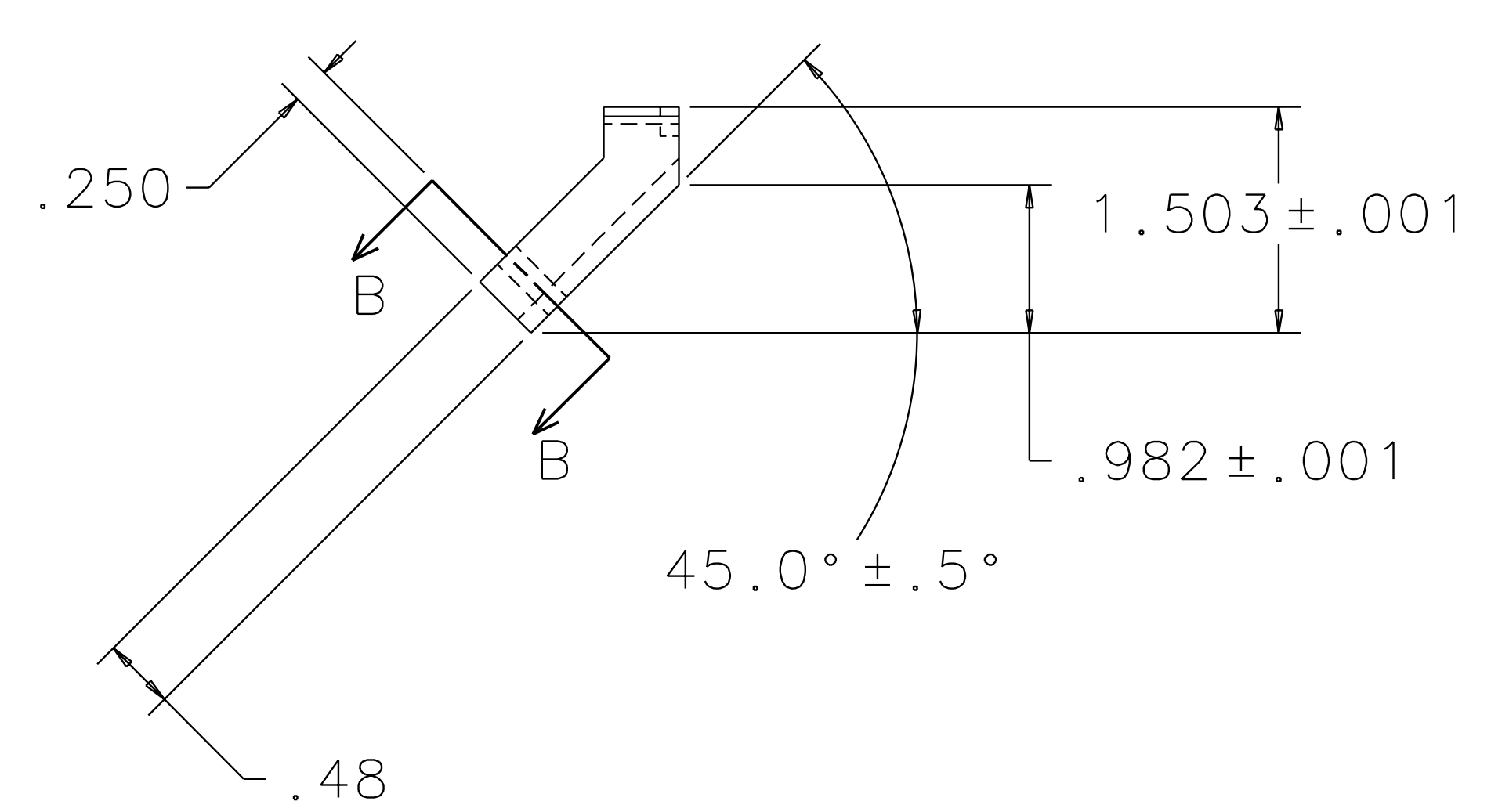
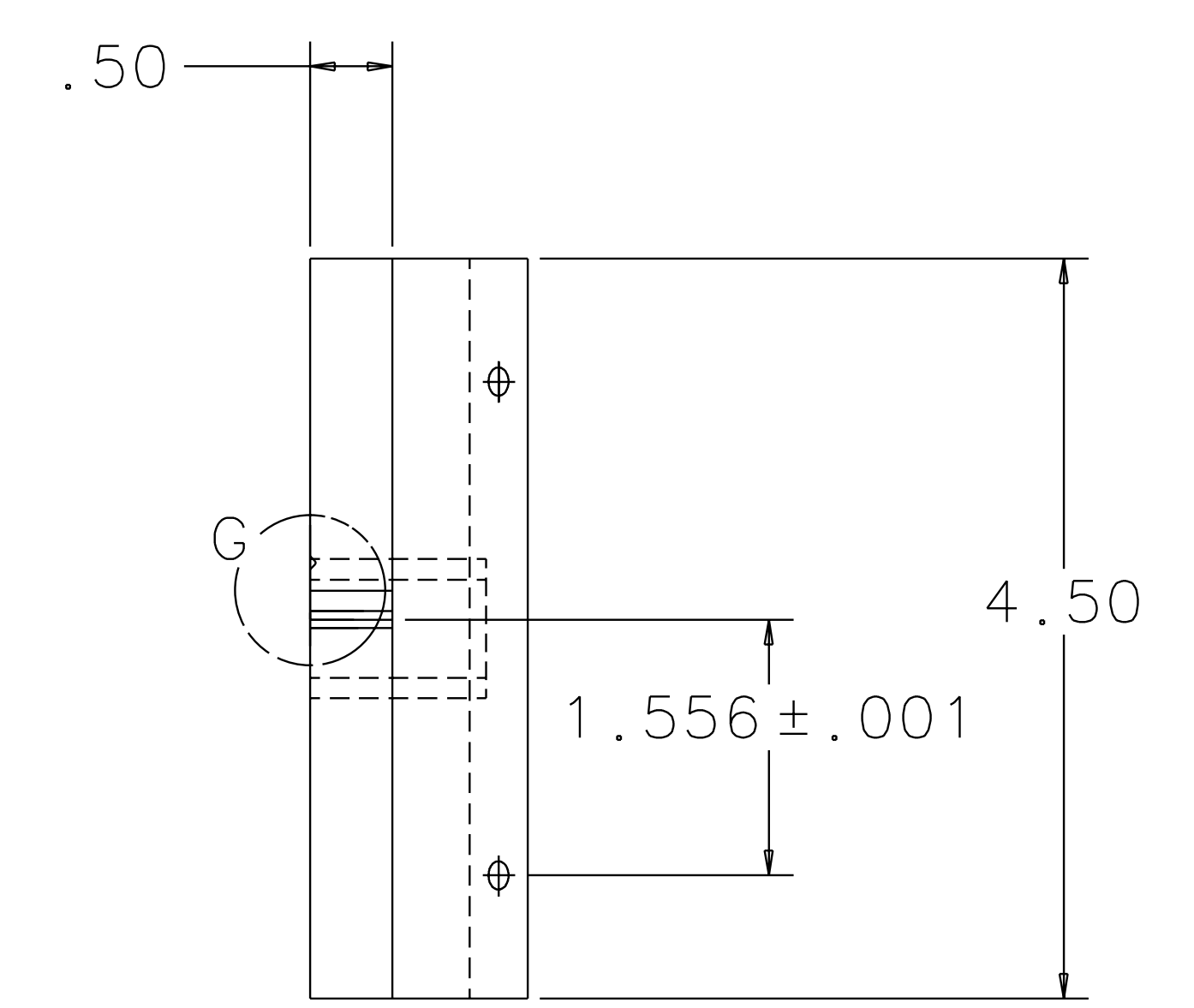
VIEW K
SCALE 2:1



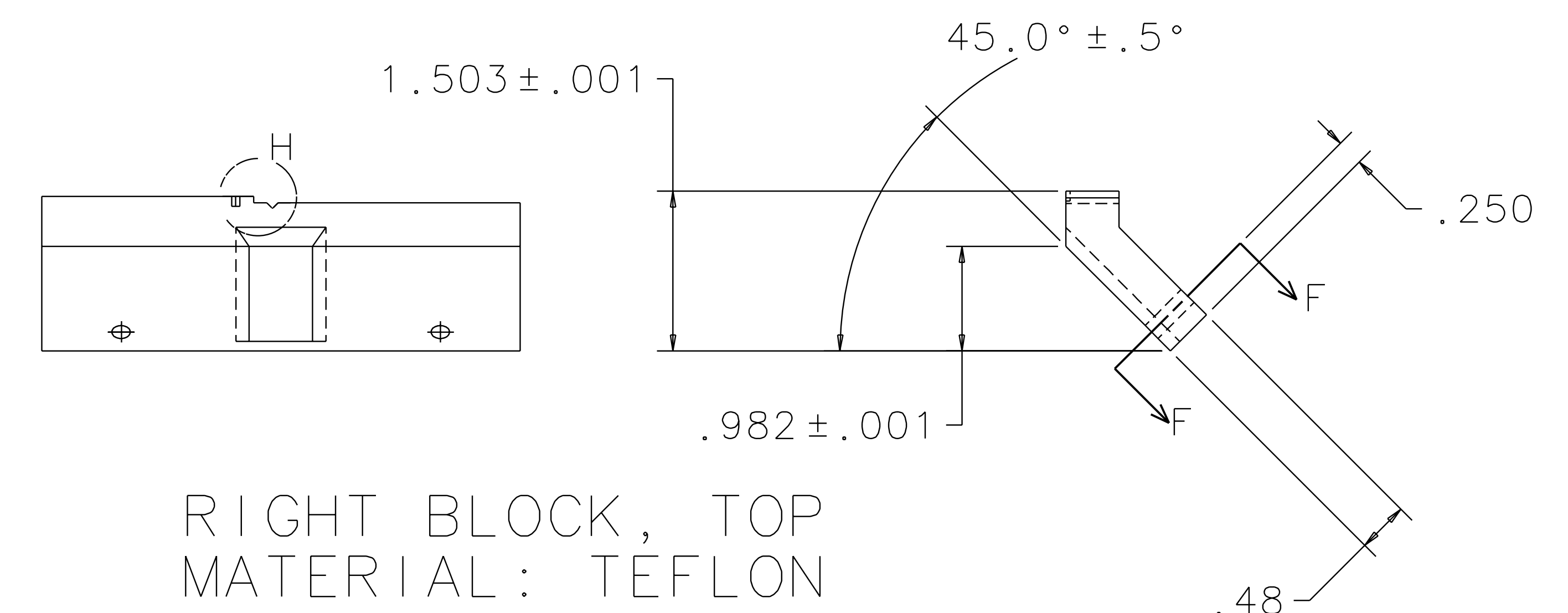
SECTION B-B



SECTION F-F



LEFT BLOCK, TOP
MATERIAL: TEFLON



RIGHT BLOCK, TOP
MATERIAL: TEFLON

QTY REQ	PART OR IDENTIFYING NO	NOMENCLATURE OR DESCRIPTION	MATERIAL SPECIFICATION	ITEM NO.
		GUIDE ROD FIXTURE		

APPROVALS	DATE	TITLE
J. Hazel	5/96	GUIDE ROD FIXTURE

UNLESS OTHERWISE SPECIFIED DIMENSIONS ARE IN INCHES	FRACCTIONS	DECIMALS	ANGLES
0.XX ± 0.01	0.XXX ± 0.005	ANGLES ± 0.5°	

DO NOT SCALE DRAWING	MATERIAL	FINISH	SCALE	SHEET
			1/1	3 OF 3