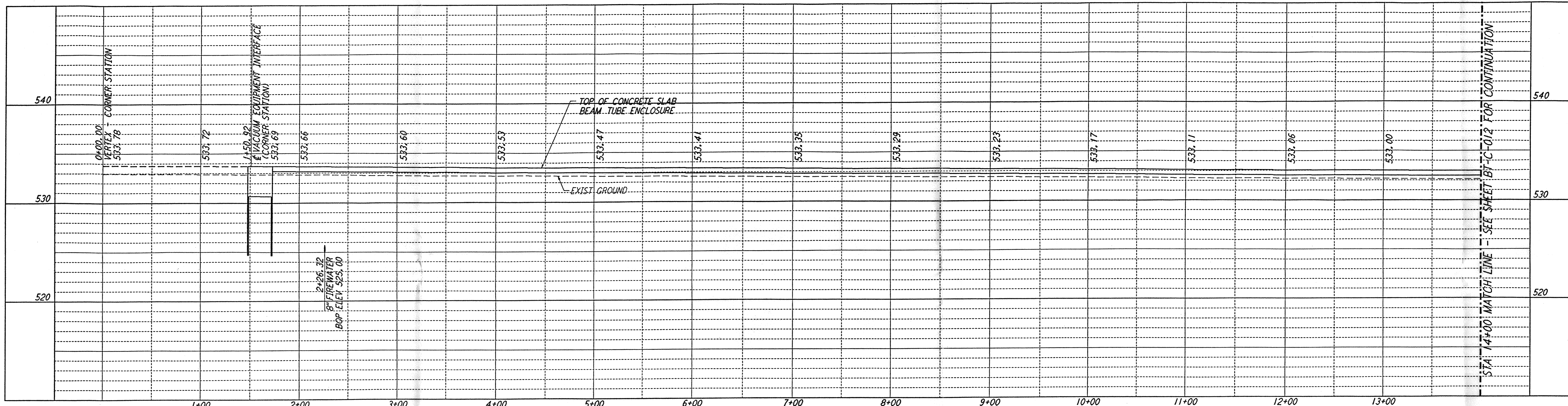
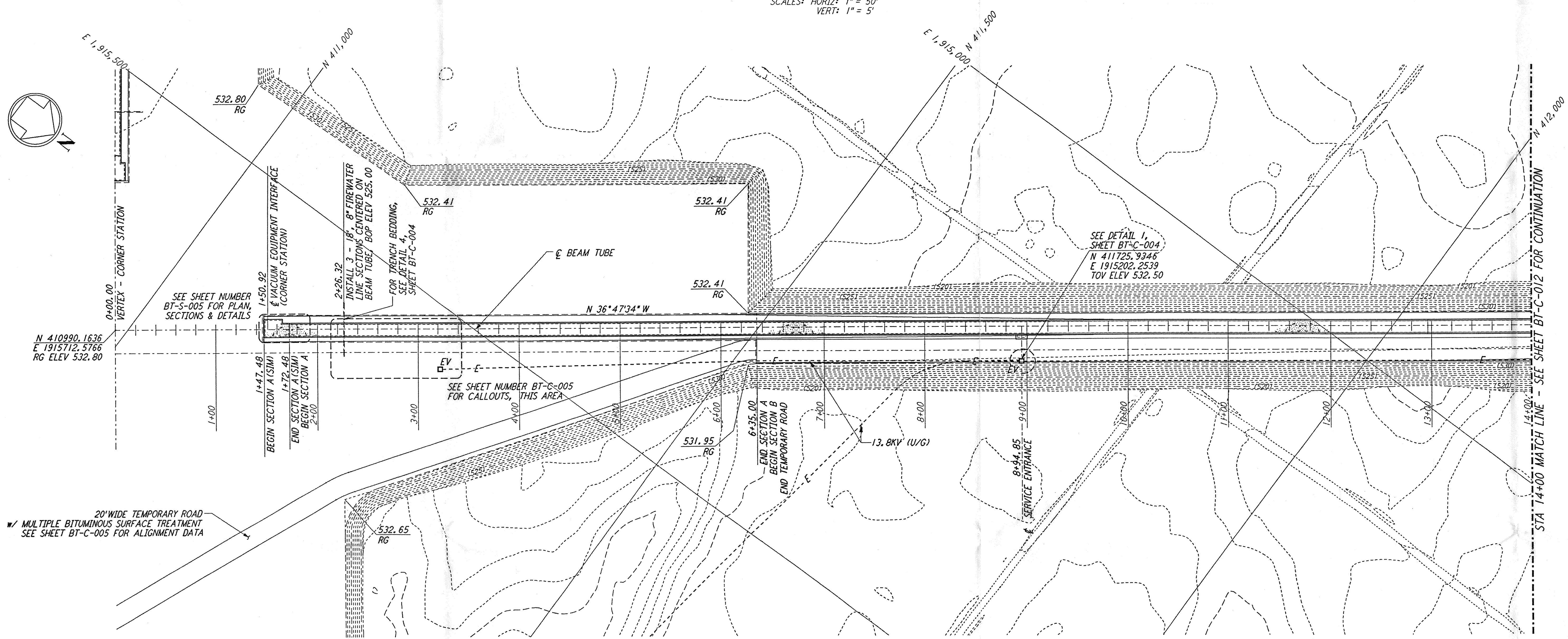


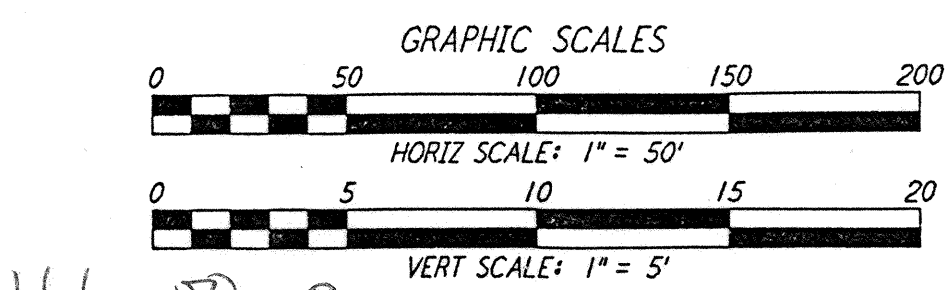
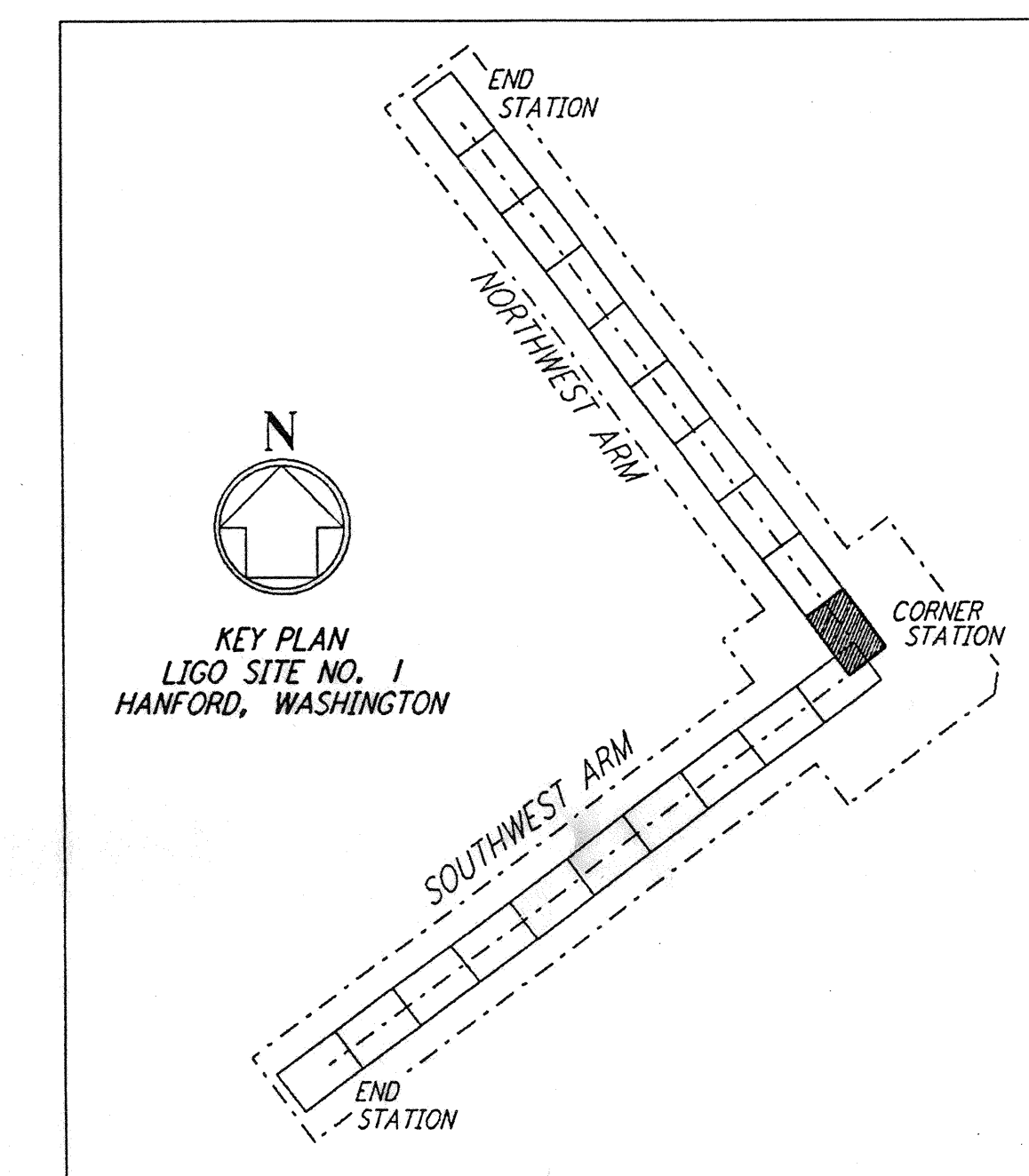
- NOTES:**
1. SEE SHEET BT-C-002 FOR GENERAL NOTES, LEGEND AND ABBREVIATIONS.
  2. SEE SHEET BT-C-004 FOR TYPICAL SECTIONS AND DETAILS.



**PROFILE**  
 SCALES: HORIZ: 1" = 50'  
 VERT: 1" = 5'



**PLAN**  
 SCALE: 1" = 50'

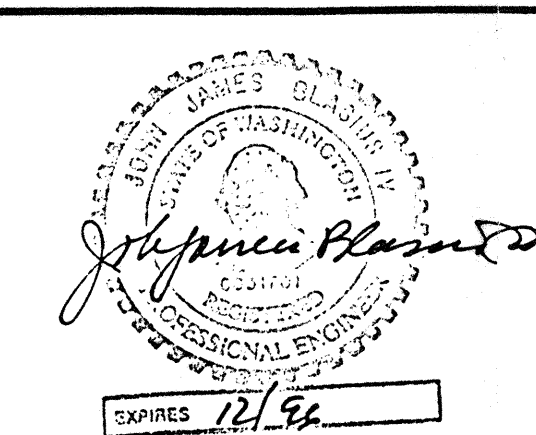


0960166-00-0

This document and the design it covers are the property of PARSONS. They are loaned only with the borrower's expressed written agreement that they will not be reproduced, copied, loaned, exhibited, or used in any other way, except by written consent from PARSONS to the borrower.

| DRAWING NO. | DESCRIPTION | NO. | DATE | BY | CHKD | ENGR | PROJ | DESCRIPTION |
|-------------|-------------|-----|------|----|------|------|------|-------------|
|             |             |     |      |    |      |      |      |             |

|                         |             |
|-------------------------|-------------|
| ISSUED FOR CONSTRUCTION |             |
| DRAWN                   | WRB 1-19-96 |
| CHECKED                 | WRB 1-19-96 |
| ENGINEER                | WRB 1-19-96 |
| PROJ                    | HLW 1-19-96 |



**PARSONS**  
 100 WEST WALNUT STREET  
 PASADENA, CALIFORNIA

**LIGO**  
 CALIFORNIA INSTITUTE OF TECHNOLOGY  
 MASSACHUSETTS INSTITUTE OF TECHNOLOGY

LASER INTERFEROMETER  
 GRAVITATIONAL-WAVE OBSERVATORY  
 BTE SITWORK & FABRICATION - HANFORD, WA

|  |           |                 |                |
|--|-----------|-----------------|----------------|
| TITLE  | SCALE     | CONTRACT NUMBER | PROJECT NUMBER |
| CIVIL NORTHWEST ARM PLAN AND PROFILE STA 0+00 TO STA 14+00 | AS NOTED  | PP150969        | 8094           |
| SHEET NUMBER   | REVISIONS |                 |                |
| <b>BT-C-011</b>  |           |                 |                |