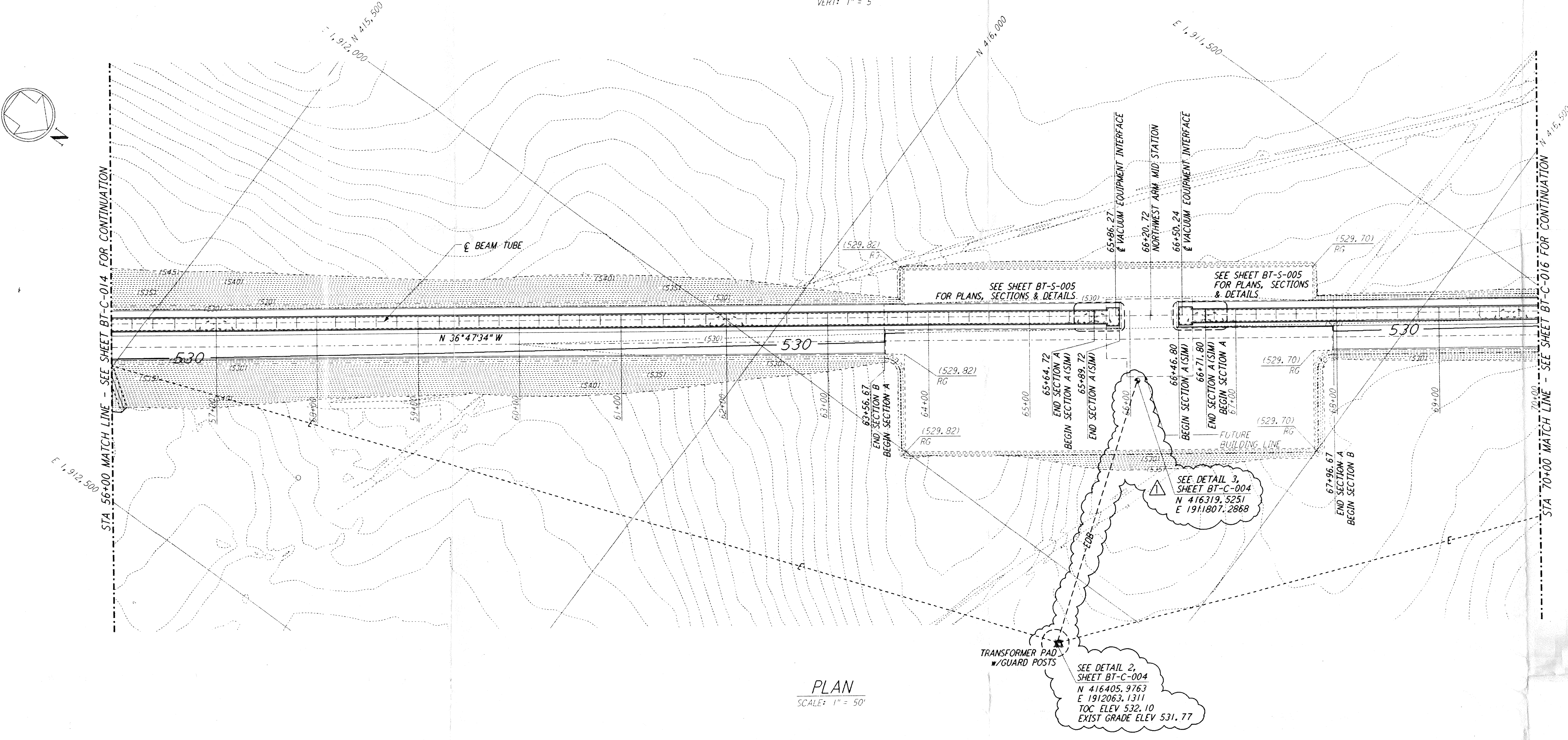
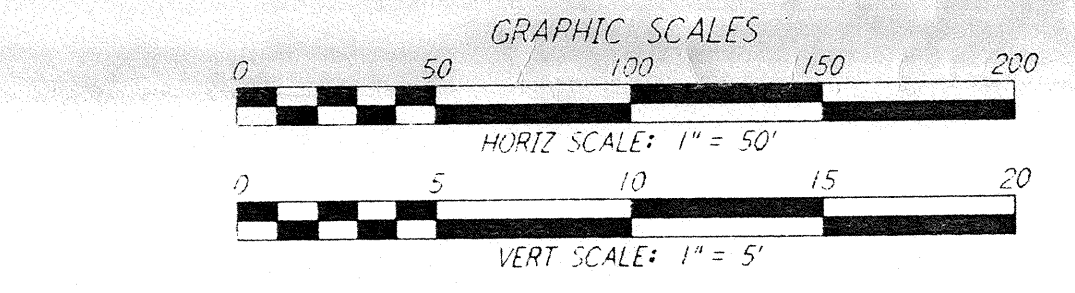
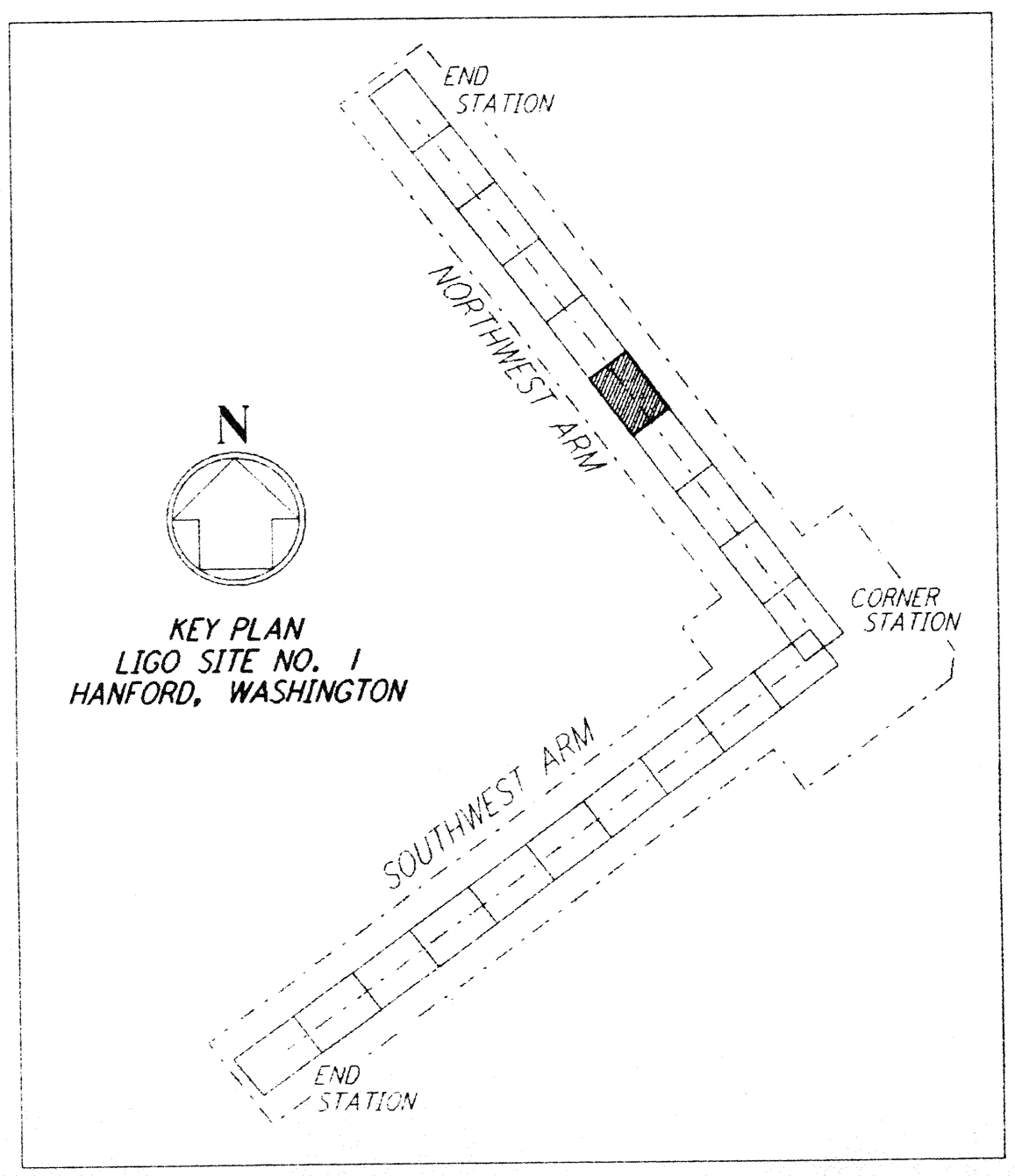


**PROFILE**  
 SCALES: HORIZ: 1" = 50'  
 VERT: 1" = 5'



**PLAN**  
 SCALE: 1" = 50'

- NOTES:**
- SEE SHEET BT-C-002 FOR GENERAL NOTES, LEGEND AND ABBREVIATIONS.
  - SEE SHEET BT-C-004 FOR TYPICAL SECTIONS AND DETAILS.



DRAWING NO.	DESCRIPTION	NO.	DATE	BY	CHK	ENGR	PROJ	DESCRIPTION
		1	2-29-96	WRB				CHANGE ORDER NO. 2

ISSUED FOR CONSTRUCTION			
DRAWN	WRB	1-19-96	
CHECKED	MP	1-19-96	
ENGINEER	JB	1-19-96	
PROJ	MDW	1-19-96	

*John M. Howard*  
 12/96

**PARSONS**  
 100 WEST WALNUT STREET  
 PASADENA, CALIFORNIA

**LIGO**  
 CALIFORNIA INSTITUTE OF TECHNOLOGY  
 MASSACHUSETTS INSTITUTE OF TECHNOLOGY

LASER INTERFEROMETER  
 GRAVITATIONAL-WAVE OBSERVATORY  
 BTE SITING & FABRICATION - HANFORD, WA

TITLE: CIVIL NORTHWEST ARM PLAN AND PROFILE  
 STA 56+00 TO STA 70+00

SCALE: AS NOTED  
 CONTRACT NUMBER: PPI50969  
 PROJECT NUMBER: 8094  
 SHEET NUMBER: BT-C-015

Date Received: 3/25/96	LIGO-D960170-01-01	Contract # 81-c-015	Rev. 1
TW #	LIGO	Approved	
Date	/ /	Approved	
TOW #	LIGO	Approved	
Date	/ /	Approved	
Gen'l Transmittal	LIGO	Approved	
Date	/ /	Approved	

PARSONS . They are loaned only with the borrower's expressed written agreement that they will

PARSONS . They are loaned only with the borrower's expressed written agreement that they will

REFERENCES

E  
 D  
 C  
 B  
 A