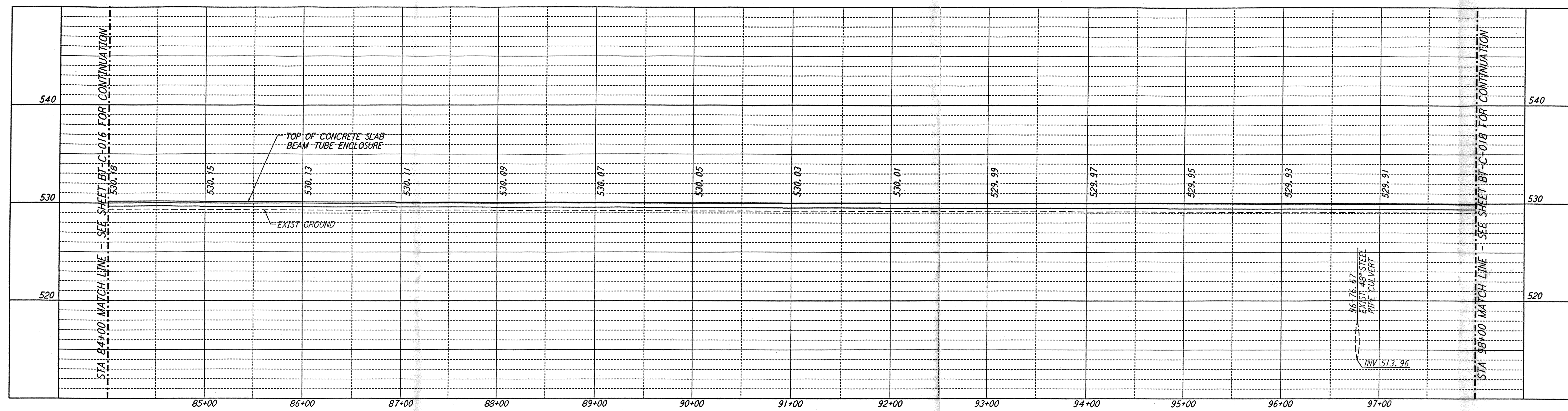
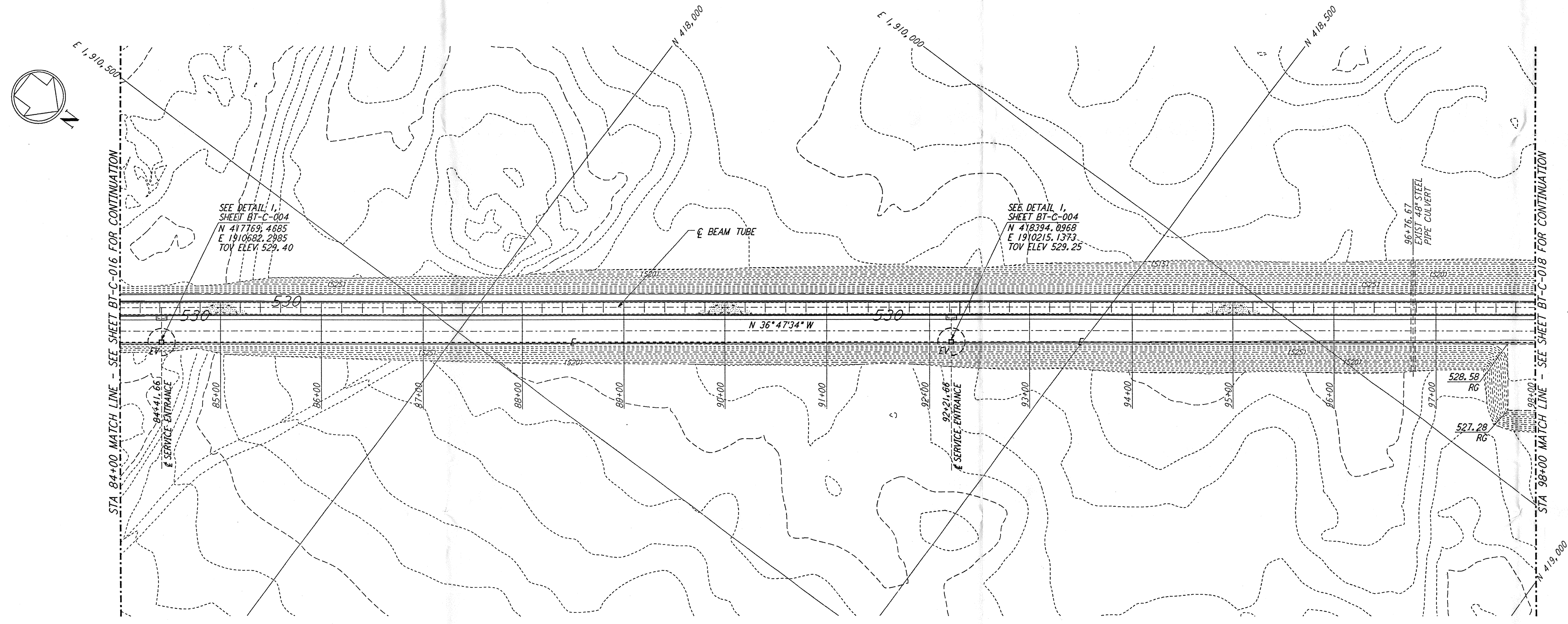


This document and the design it covers are the property of PARSONS. They are loaned only with the borrower's expressed written agreement that they will not be reproduced, copied, loaned, exhibited, or used in any other way, except by written consent from PARSONS to the borrower.

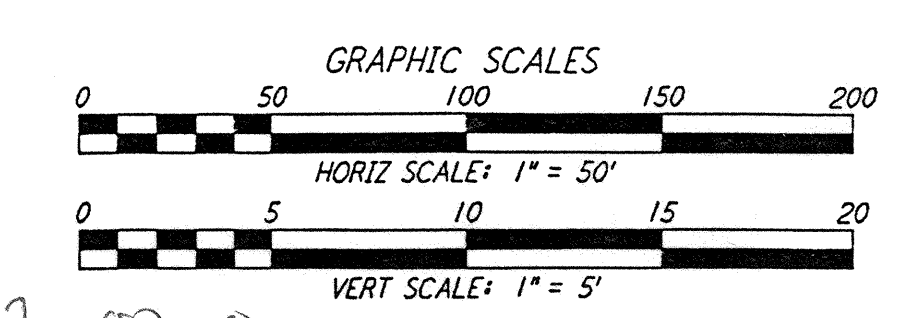
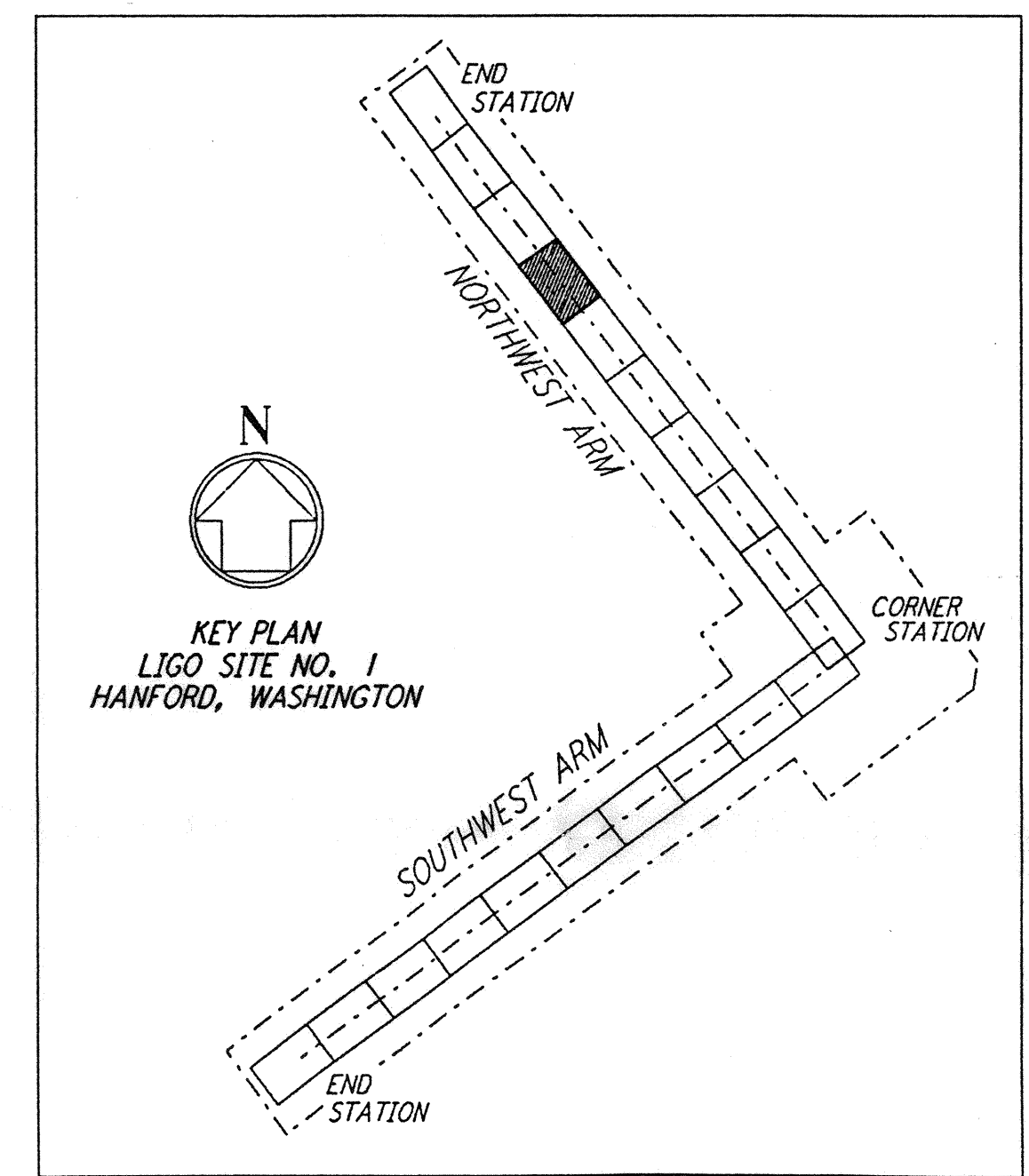


NOTES:
 1. SEE SHEET BT-C-002 FOR GENERAL NOTES, LEGEND AND ABBREVIATIONS.
 2. SEE SHEET BT-C-004 FOR TYPICAL SECTIONS AND DETAILS.

PROFILE
 SCALES: HORIZ: 1" = 50'
 VERT: 1" = 5'



PLAN
 SCALE: 1" = 50'



D960172-00-0

LASER INTERFEROMETER
 GRAVITATIONAL-WAVE OBSERVATORY
 BTE SITWORK & FABRICATION - HANFORD, WA

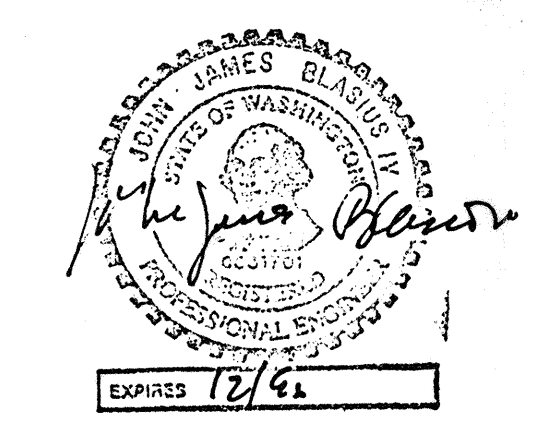
CIVIL
 NORTHWEST ARM
 PLAN AND PROFILE
 STA 84+00 TO STA 98+00

AS NOTED PPI50969 8094

BT-C-017

DRAWING NO.	DESCRIPTION	NO.	DATE	BY	CHKD	ENGR	PROJ	DESCRIPTION

ISSUED FOR CONSTRUCTION
 DRAWN WRB 1-19-96
 CHECKED JB 1-19-96
 ENGINEER JB 1-19-96
 PROJ (LIGO) 1-19-96



PARSONS
 100 WEST WALNUT STREET
 PASADENA, CALIFORNIA

LIGO
 CALIFORNIA INSTITUTE OF TECHNOLOGY
 MASSACHUSETTS INSTITUTE OF TECHNOLOGY

Jan 17 10:23:37 1996 s:\v\ce\bt-c-017.dgz