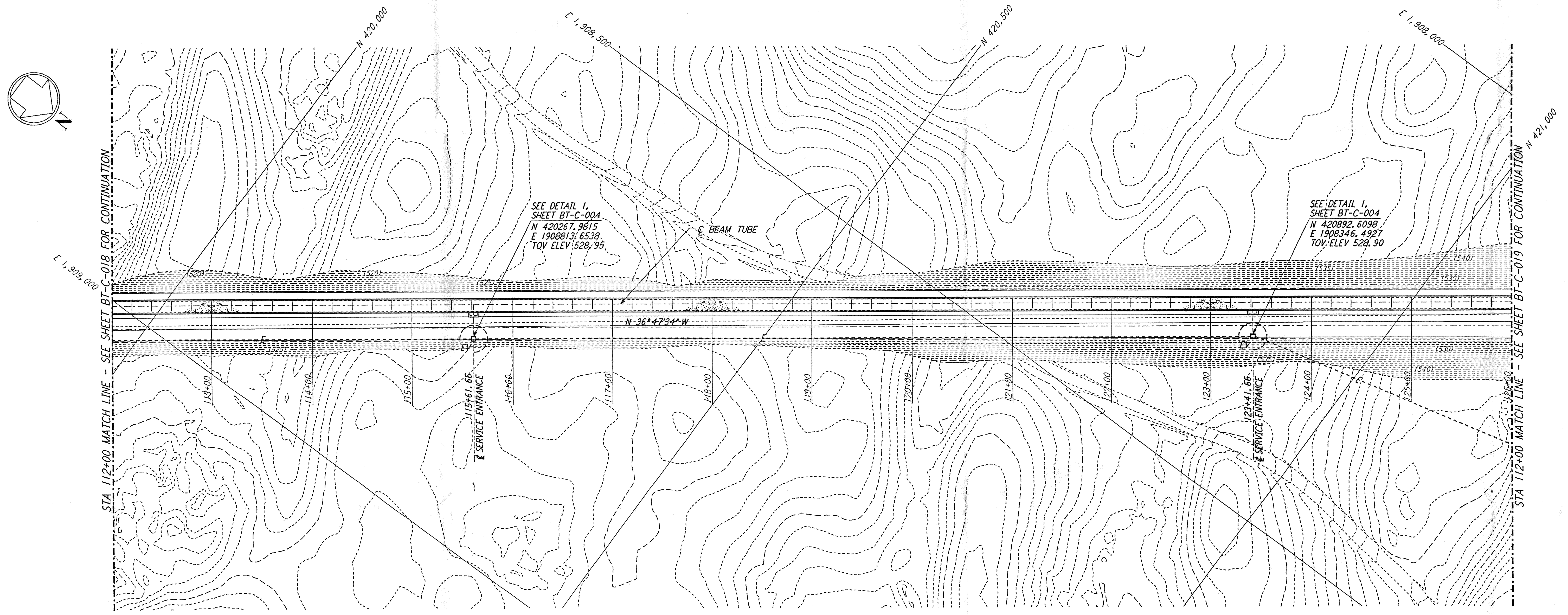
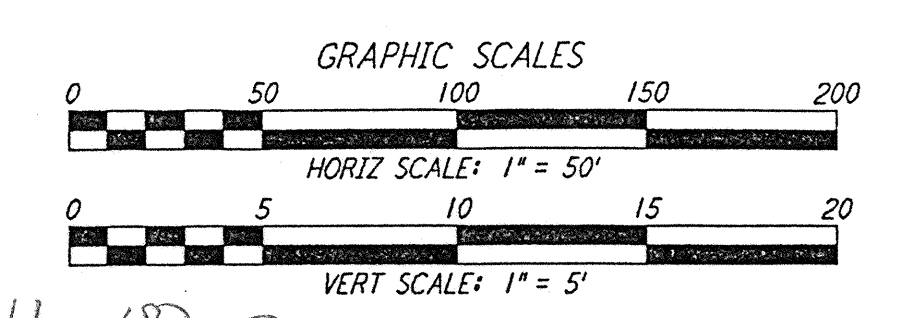
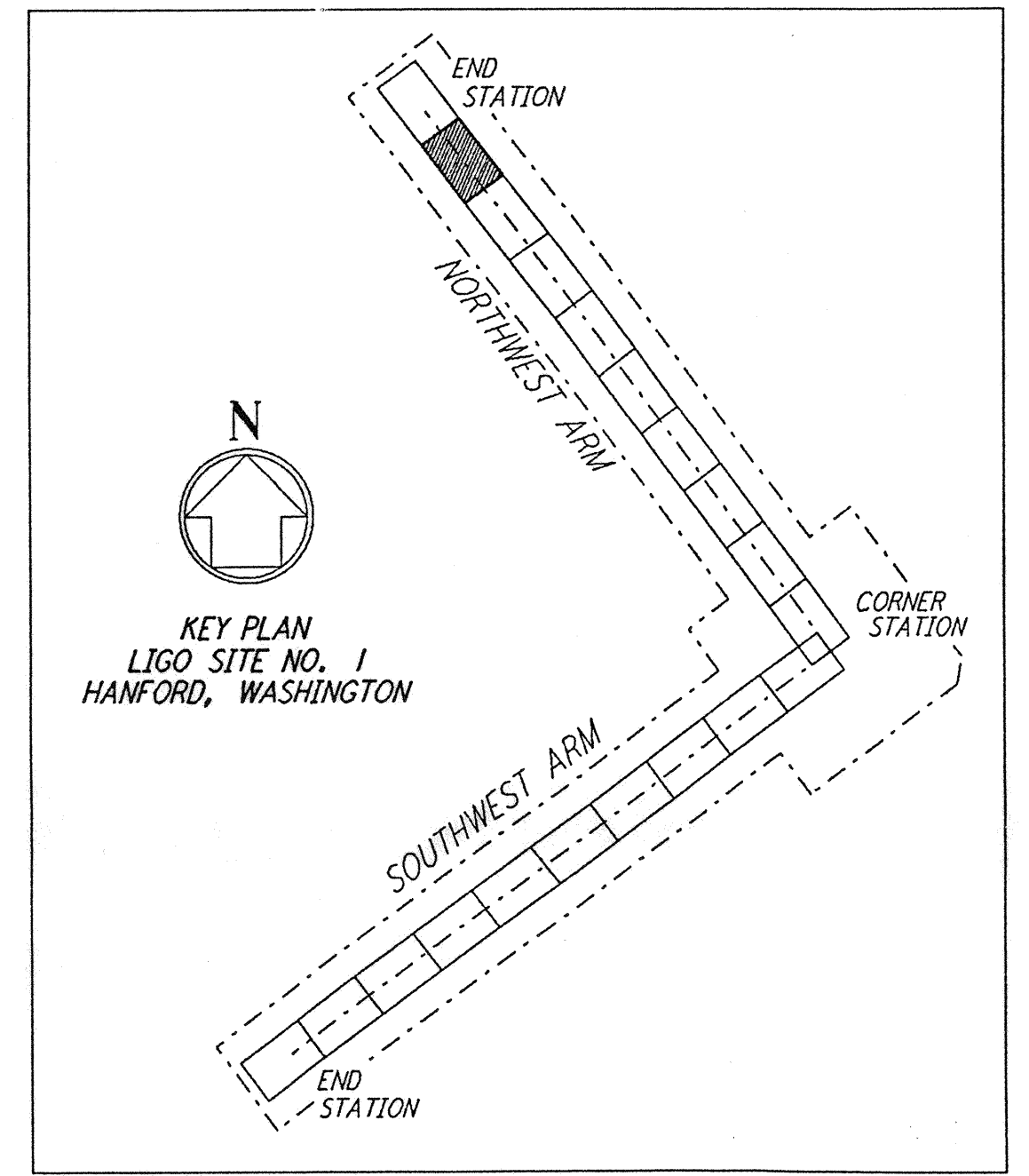


- NOTES:**
- SEE SHEET BT-C-002 FOR GENERAL NOTES, LEGEND AND ABBREVIATIONS.
  - SEE SHEET BT-C-004 FOR TYPICAL SECTIONS AND DETAILS.

**PROFILE**  
 SCALES: HORIZ: 1" = 50'  
 VERT: 1" = 5'



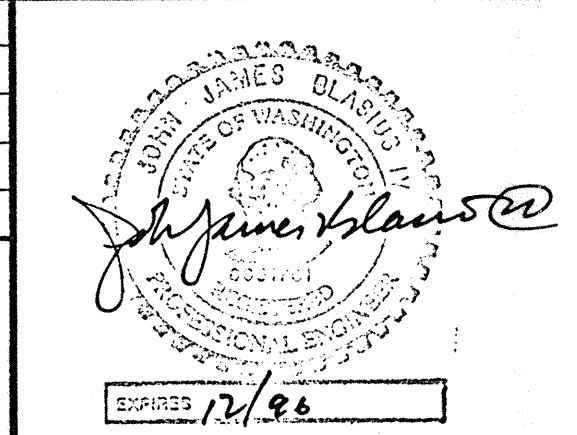
**PLAN**  
 SCALE: 1" = 50'



D960174-00-0

NO.	DATE	BY	CHKD	ENGR	PROJ	DESCRIPTION

ISSUED FOR CONSTRUCTION	
DRAWN	WRB 1-19-96
CHECKED	wp 1-19-96
ENGINEER	jb 1-19-96
PROJ	MW 1-19-96



**PARSONS**  
 100 WEST WALNUT STREET  
 PASADENA, CALIFORNIA

**LIGO**  
 CALIFORNIA INSTITUTE OF TECHNOLOGY  
 MASSACHUSETTS INSTITUTE OF TECHNOLOGY

LASER INTERFEROMETER  
 GRAVITATIONAL-WAVE OBSERVATORY  
 BTE SITWORK & FABRICATION - HANFORD, WA

TITLE	CIVIL NORTHWEST ARM PLAN AND PROFILE STA 112+00 TO STA 126+00
SCALE	AS NOTED
CONTRACT NUMBER	PP150969
PROJECT NUMBER	8094
SHEET NUMBER	<b>BT-C-019</b>

THIS DOCUMENT AND THE DESIGN IT REPRESENTS ARE THE PROPERTY OF PARSONS. They are loaned only with the permission of PARSONS. They are not to be used for any other project without the written consent of PARSONS. The user assumes all liability for any use of this document not intended by PARSONS.