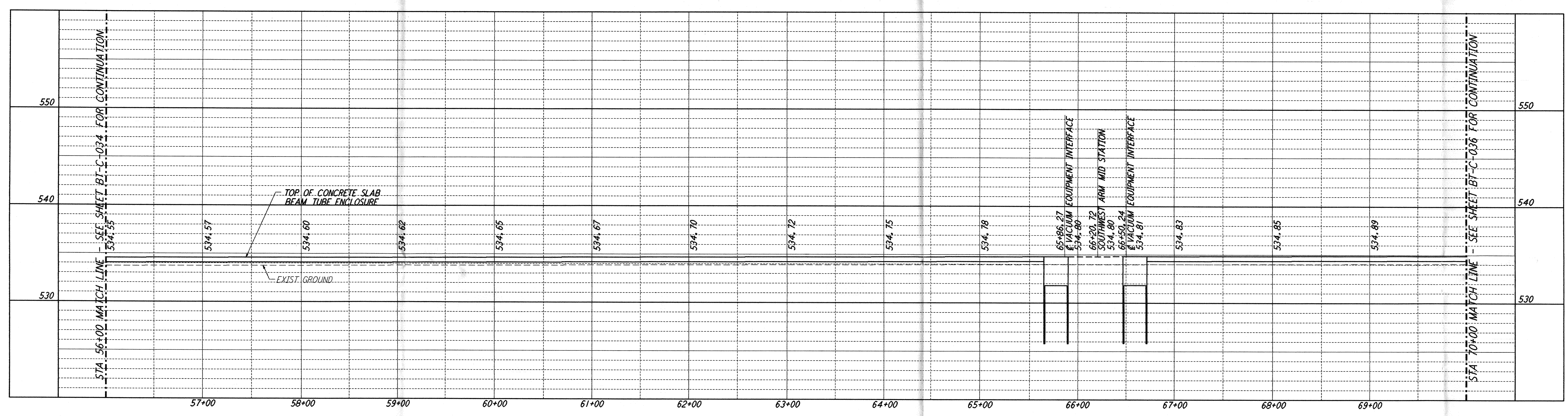
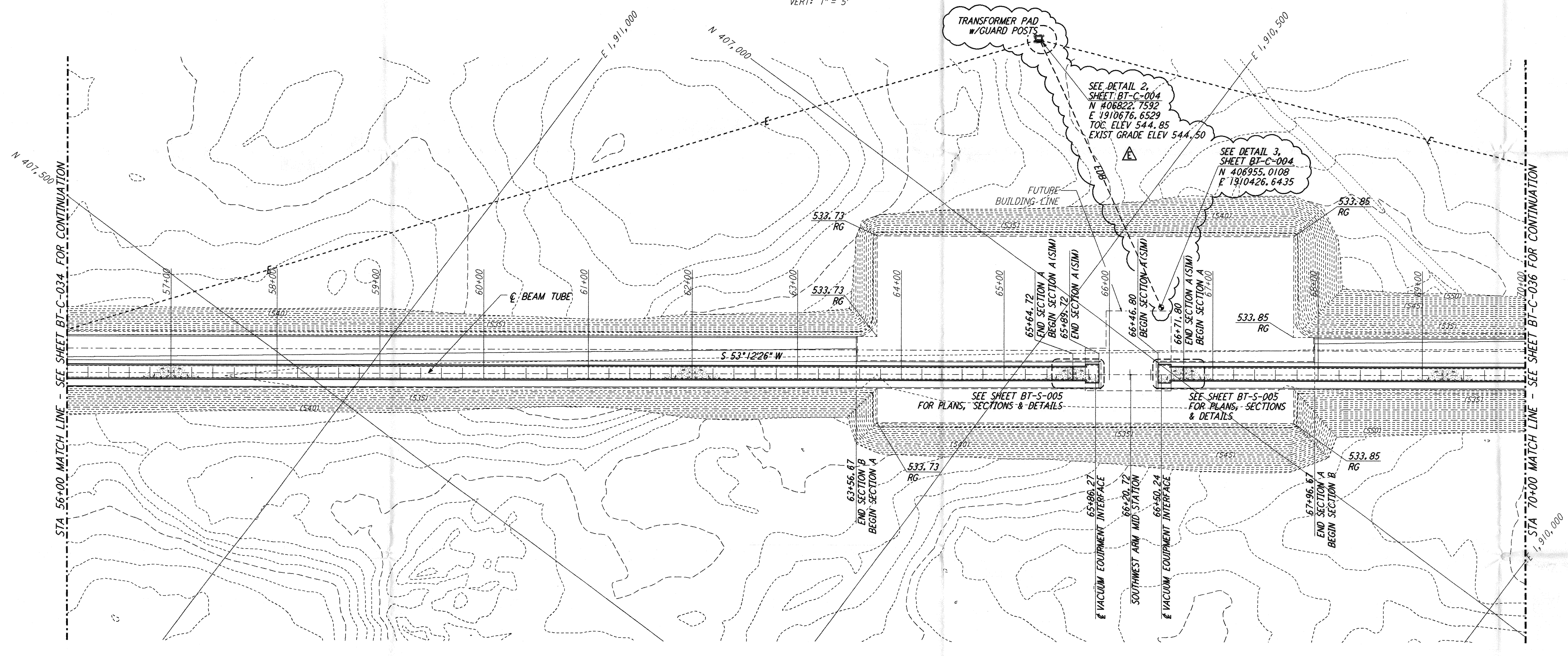


This document and the design it covers are the property of PARSONS. They are loaned only with the borrower's expressed written agreement that they will not be reproduced, copied, loaned, exhibited, or used in any other way, except by written consent from PARSONS to the borrower.

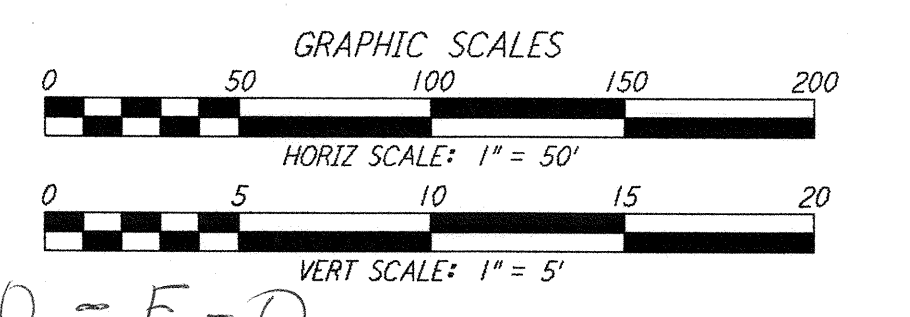
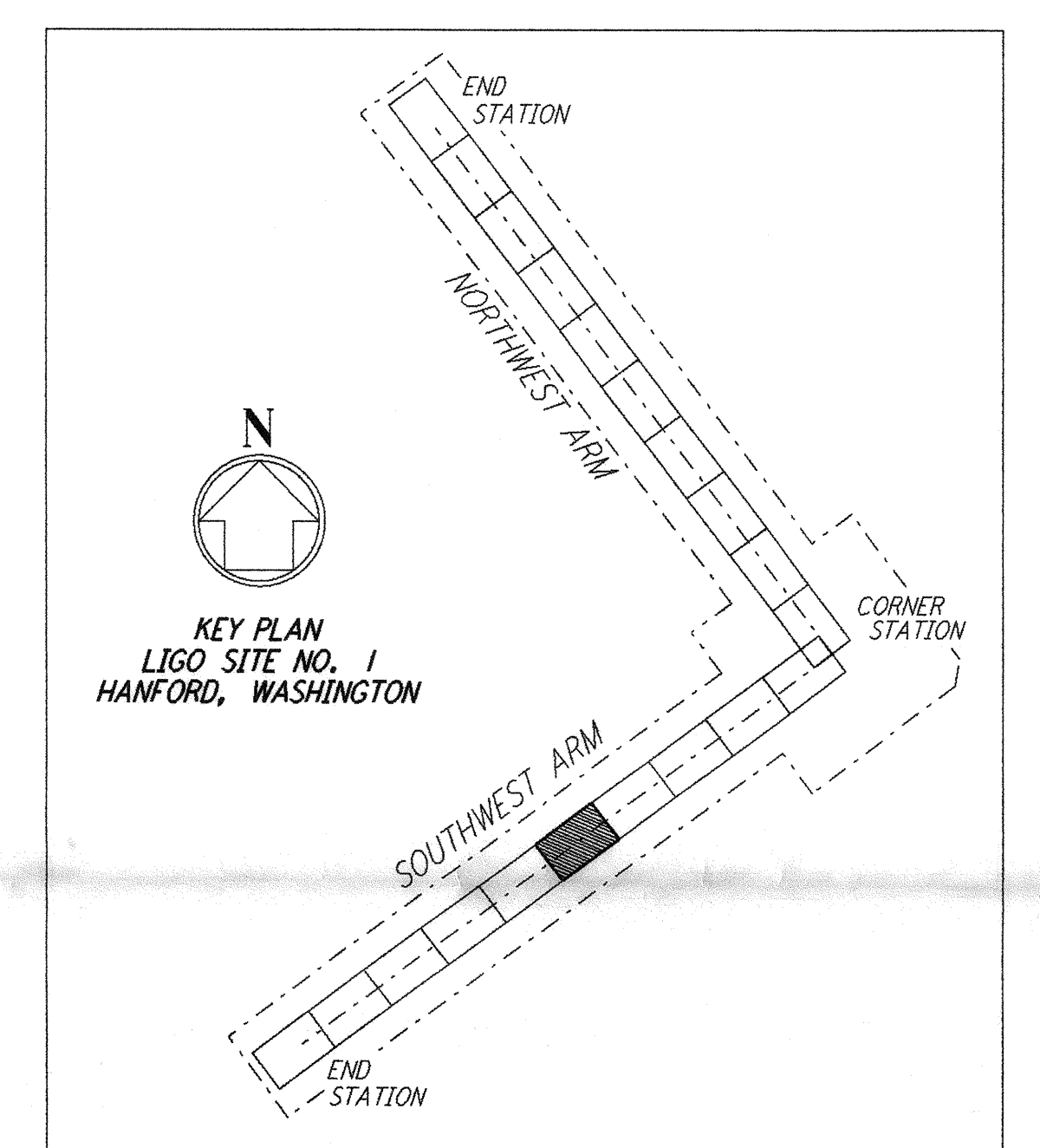
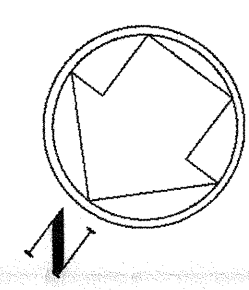


- NOTES:**
- SEE SHEET BT-C-002 FOR GENERAL NOTES, LEGEND AND ABBREVIATIONS.
 - SEE SHEET BT-C-004 FOR TYPICAL SECTIONS AND DETAILS.

PROFILE
 SCALES: HORIZ: 1" = 50'
 VERT: 1" = 5'



PLAN
 SCALE: 1" = 50'



NO.	DATE	BY	CHKD	ENGR	PROJ	DESCRIPTION
E	12/18/95	WRB				BID AMENDMENT 1
D	11/21/95	WRB				ISSUED FOR BID
C	11/6/95	WRB				FINAL DESIGN REVIEW
B	10/3/95	WRB				DRAFT FINAL DESIGN REPORT
A	8/14/95	WRB				PRELIMINARY DESIGN REPORT

DRAWN	WRB
CHECKED	
ENGINEER	
PROJ	

PARSONS
 100 WEST WALNUT STREET
 PASADENA, CALIFORNIA

LIGO
 CALIFORNIA INSTITUTE OF TECHNOLOGY
 MASSACHUSETTS INSTITUTE OF TECHNOLOGY

**LASER INTERFEROMETER
 GRAVITATIONAL-WAVE OBSERVATORY
 BTE SITWORK & FABRICATION - HANFORD, WA**

SOUTHWEST ARM
 PLAN AND PROFILE
 STA 56+00 TO STA 70+00

AS NOTED PPI50969 8094
BT-C-035

0960180 - E-D

I:\ligo\site\ce\bt\c035.dwg 12/18/95 10:13:29 LIGOBTF3.BDR