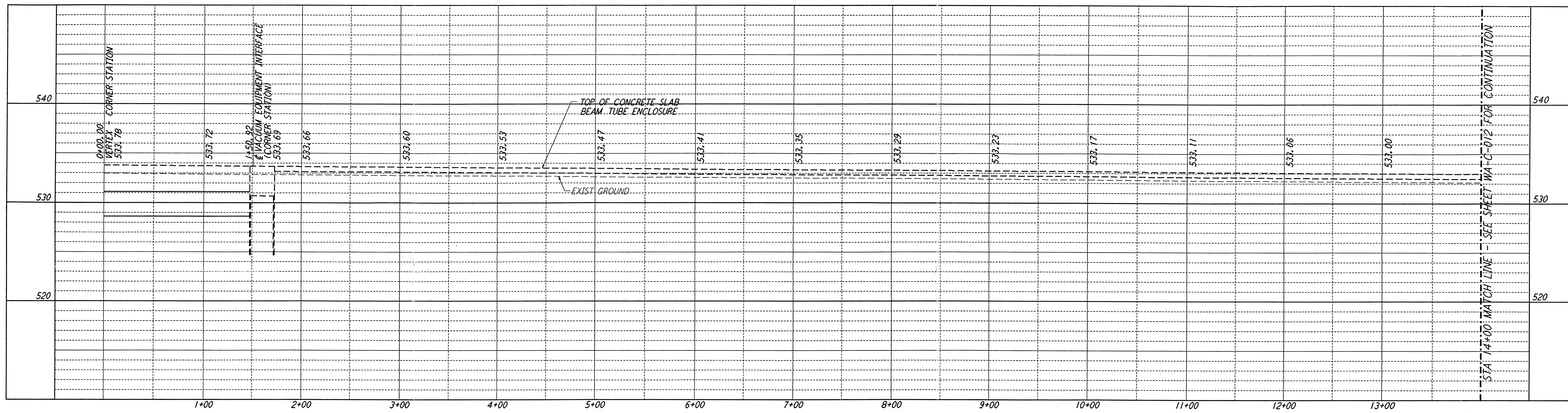
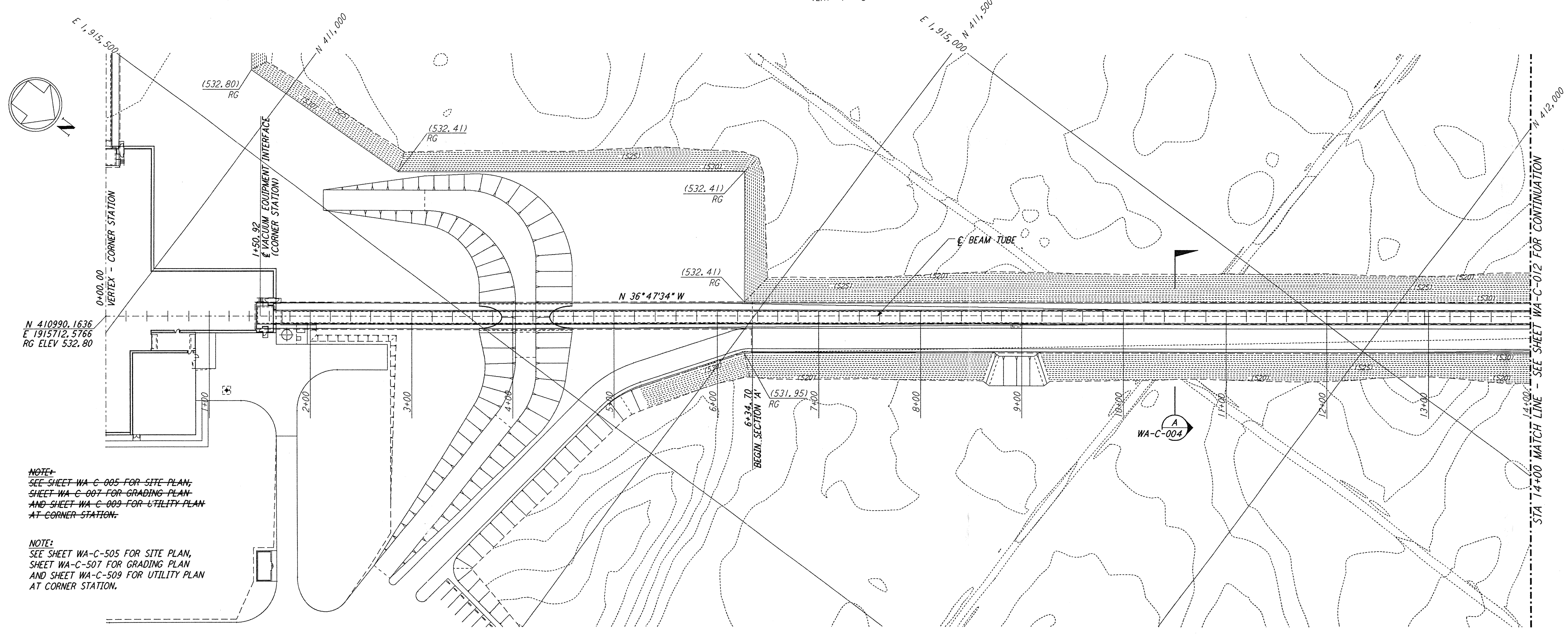


NOTES:  
 1. SEE SHEET WA-C-002 FOR GENERAL NOTES, LEGEND AND ABBREVIATIONS.



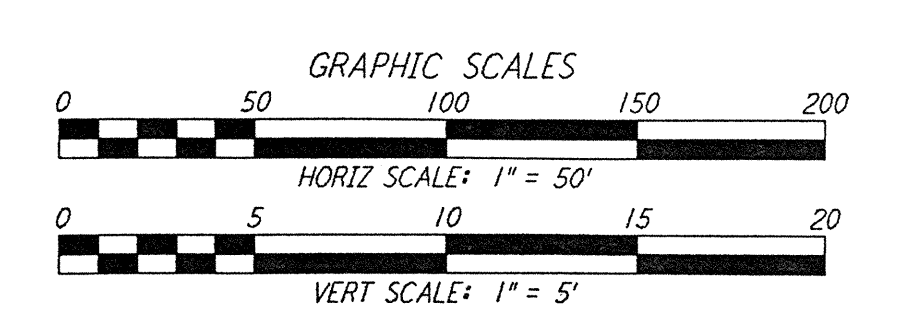
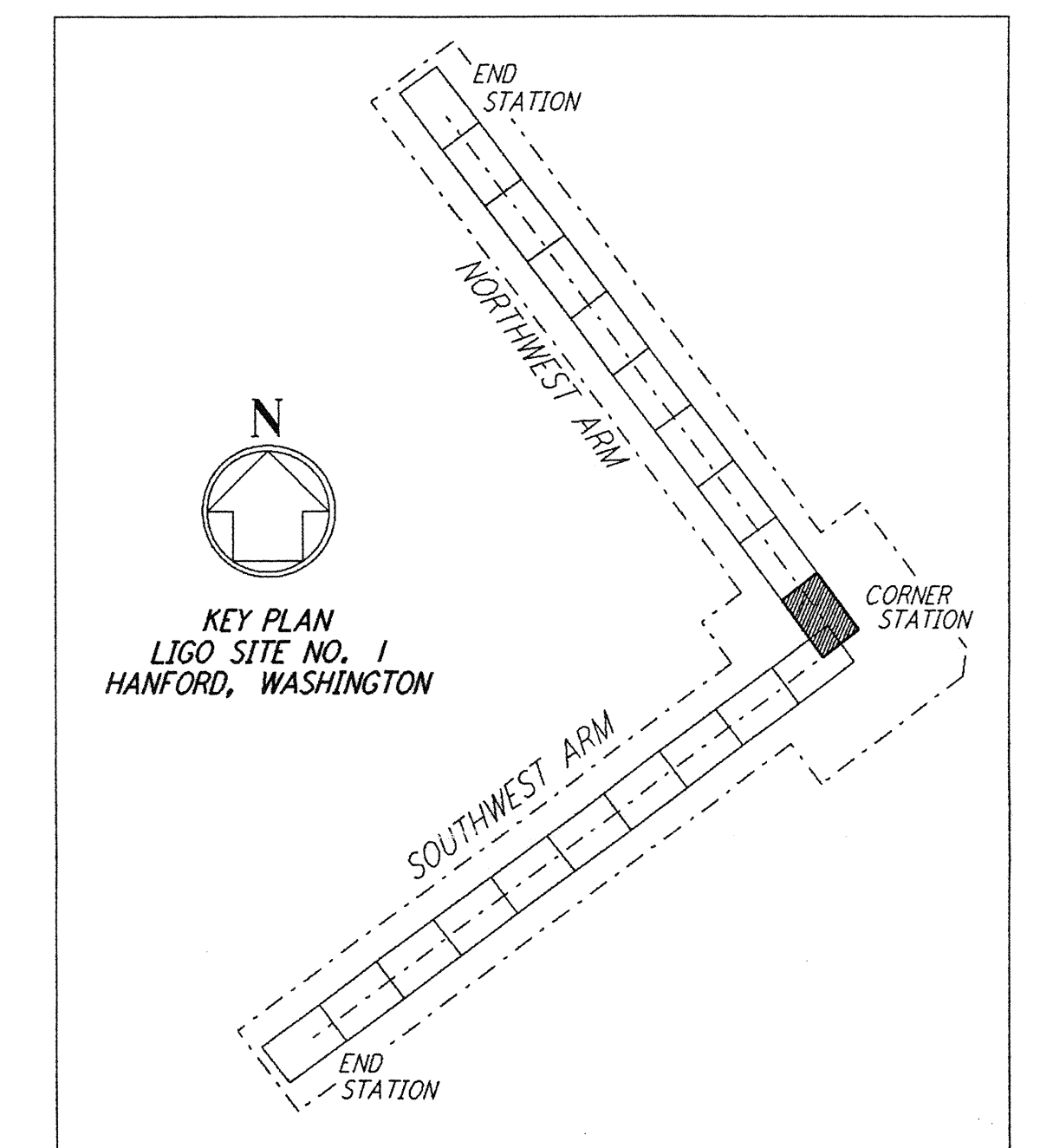
PROFILE  
 SCALES: HORIZ: 1" = 50'  
 VERT: 1" = 5'



PLAN  
 SCALE: 1" = 50'

NOTE:  
 SEE SHEET WA-C-005 FOR SITE PLAN,  
 SHEET WA-C-007 FOR GRADING PLAN  
 AND SHEET WA-C-009 FOR UTILITY PLAN  
 AT CORNER STATION.

NOTE:  
 SEE SHEET WA-C-505 FOR SITE PLAN,  
 SHEET WA-C-507 FOR GRADING PLAN  
 AND SHEET WA-C-509 FOR UTILITY PLAN  
 AT CORNER STATION.



NO.	DATE	BY	CHKD	ENGR	PROJ	DESCRIPTION
B	4/19/96	WRB				FINAL DESIGN REVIEW & BID
A	10/31/95	WRB				PRELIMINARY DESIGN REVIEW

DRAWN	WRB
CHECKED	
ENGINEER	
PROJ	

**PARSONS**  
 100 WEST WALNUT STREET  
 PASADENA, CALIFORNIA

**LIGO**  
 CALIFORNIA INSTITUTE OF TECHNOLOGY  
 MASSACHUSETTS INSTITUTE OF TECHNOLOGY

LASER INTERFEROMETER  
 GRAVITATIONAL-WAVE OBSERVATORY  
 SITE NO. 1 - HANFORD, WASHINGTON

TITLE: CIVIL NORTHWEST ARM PLAN AND PROFILE STA 0+00 TO STA 14+00

SCALE: AS NOTED  
 CONTRACT NUMBER: PPI50969  
 PROJECT NUMBER: 8094

SHEET NUMBER: **WA-C-011**

not be reproduced, copied, loaned, exhibited, or used in any other way, except by written consent from PARSONS to the borrower.

This document and the design it covers are the property of PARSONS. They are loaned only with the borrower's expressed written agreement that they will

I:\LIGO\site\ce\wac011.dgz

E  
 D  
 C  
 B  
 A