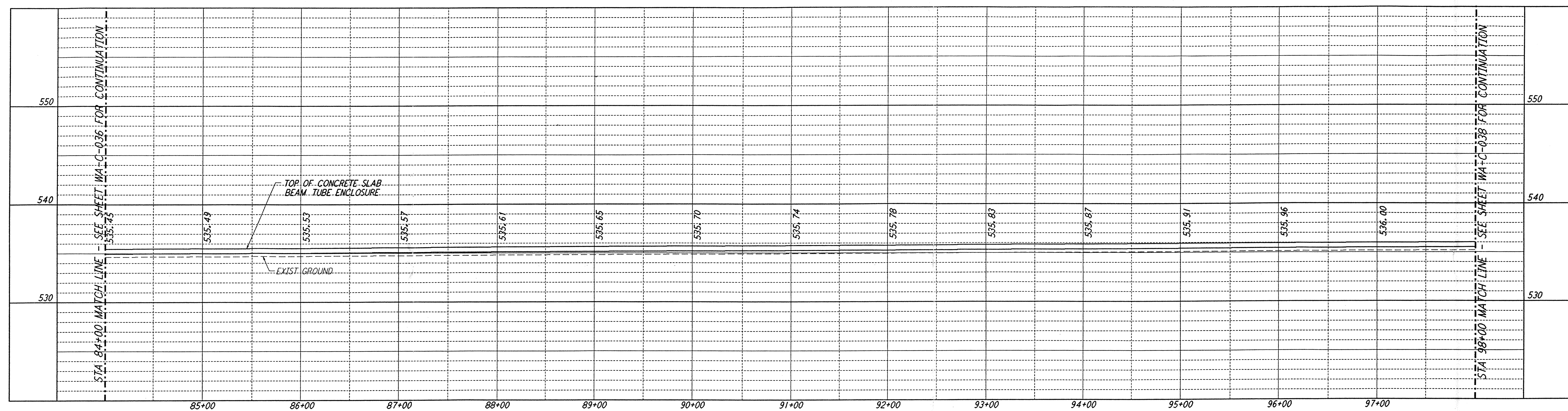
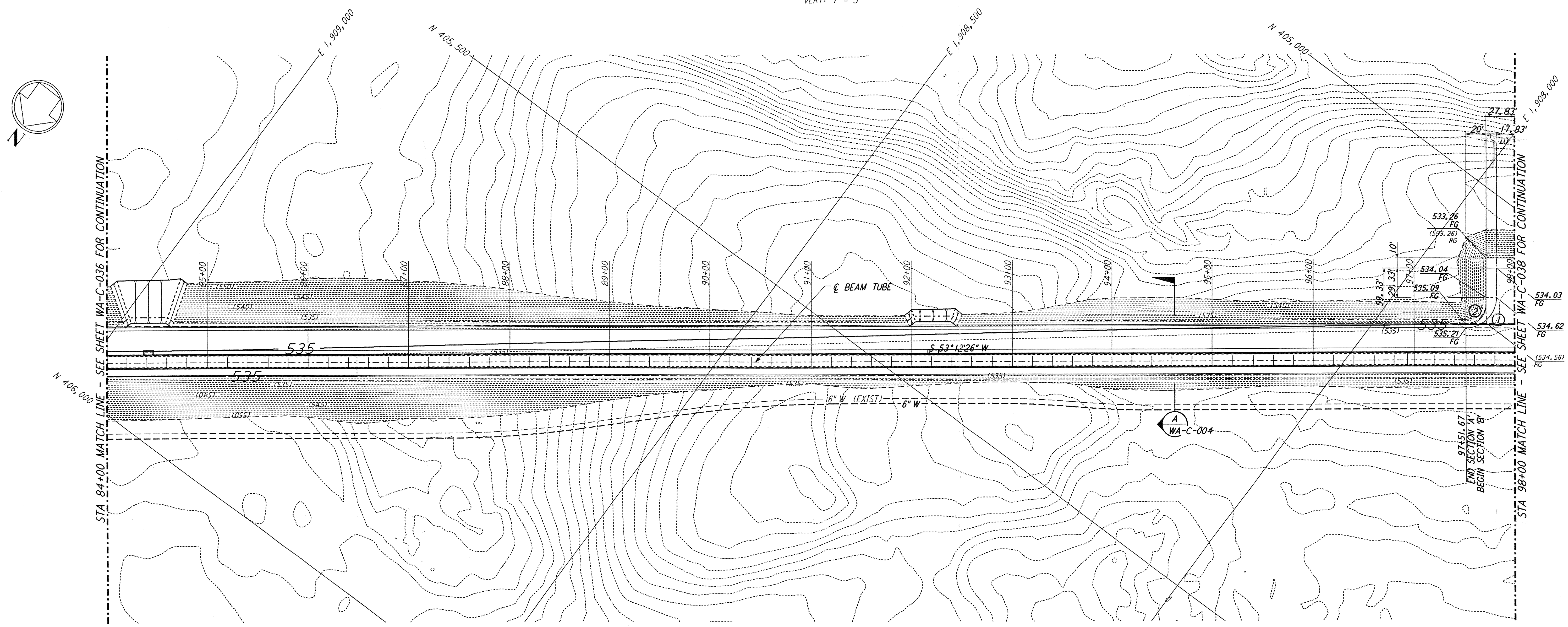


This document and the design it covers are the property of **PARSONS**. They are loaned only with the borrower's expressed written agreement that they will not be reproduced, copied, loaned, exhibited, or used in any other way, except by written consent from **PARSONS** to the borrower.



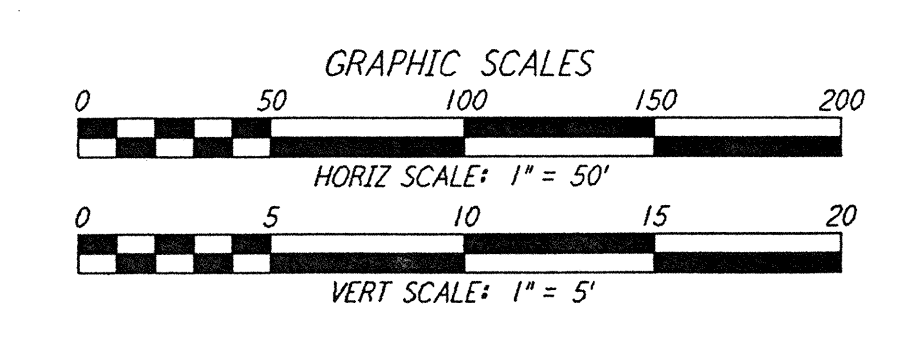
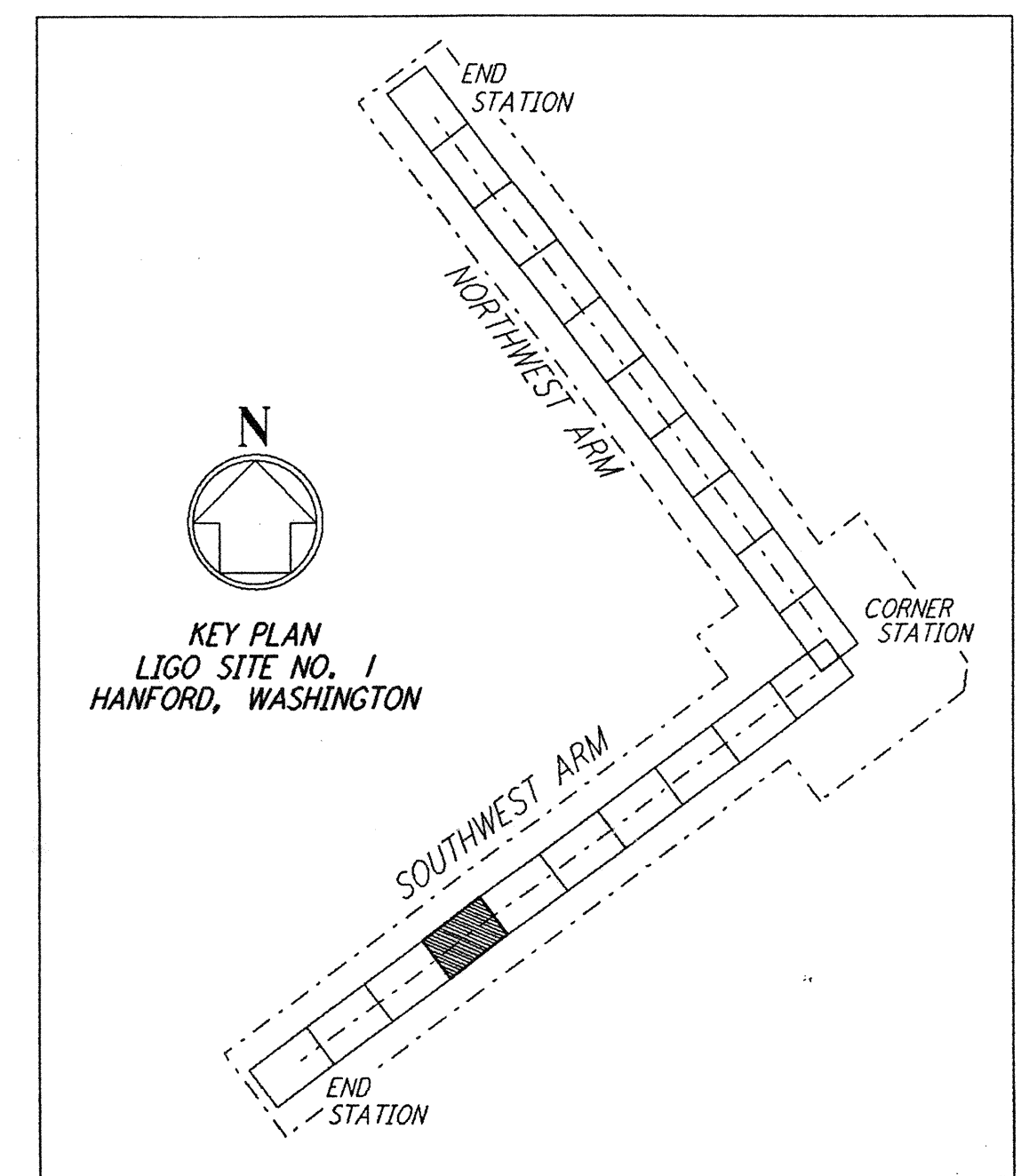
PROFILE
 SCALES: HORIZ: 1" = 50'
 VERT: 1" = 5'



PLAN
 SCALE: 1" = 50'

NOTES:
 1. SEE SHEET WA-C-002 FOR GENERAL NOTES, LEGEND AND ABBREVIATIONS.

| CURVE DATA | | | | |
|------------|-----------|--------|---------|--------|
| Δ | RADIUS | LENGTH | TANGENT | |
| 1 | 90°00'00" | 30' | 47.12' | 30.00' |
| 2 | 90°00'00" | 20' | 31.42' | 20.00' |



| NO. | DATE | BY | CHKD | ENGR | PROJ | DESCRIPTION |
|-----|----------|-----|------|------|------|---------------------------|
| B | 4/19/96 | WRB | W | | | FINAL DESIGN REVIEW & BID |
| A | 10/31/95 | WRB | | TDM | | PRELIMINARY DESIGN REVIEW |

| | |
|----------|-----|
| DRAWN | WRB |
| CHECKED | |
| ENGINEER | |
| PROJ | |

PARSONS
 100 WEST WALNUT STREET
 PASADENA, CALIFORNIA

LIGO
 CALIFORNIA INSTITUTE OF TECHNOLOGY
 MASSACHUSETTS INSTITUTE OF TECHNOLOGY

LASER INTERFEROMETER
 GRAVITATIONAL-WAVE OBSERVATORY
 SITE NO. 1 - HANFORD, WASHINGTON

| | | | |
|--|----------|-----------------|----------------|
| TITLE | AS NOTED | CONTRACT NUMBER | PROJECT NUMBER |
| CIVIL SOUTHWEST ARM PLAN AND PROFILE STA 84+00 TO STA 98+00 | PP150969 | 8094 | |

WA-C-037