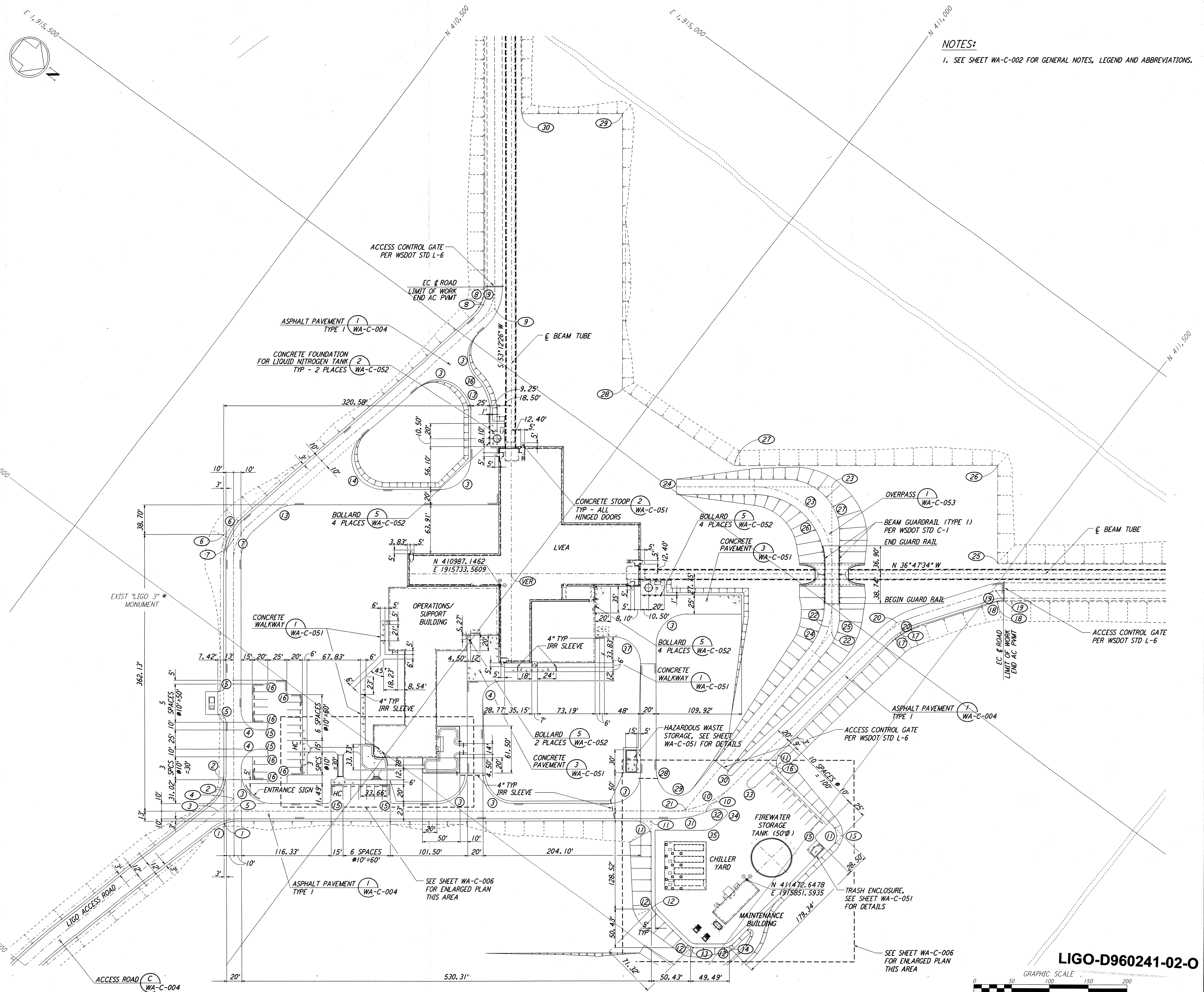


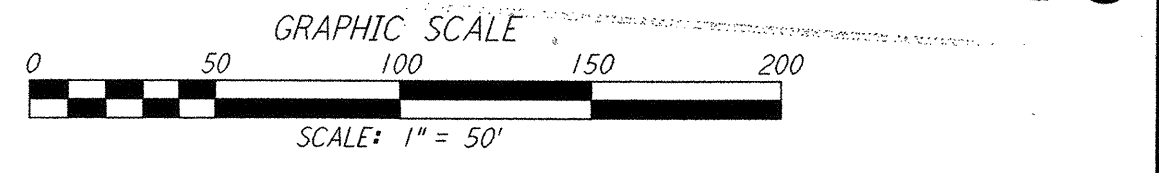
This document and the design it covers are the property of PARSONS. They are loaned only with the borrower's expressed written agreement that they will not be reproduced, copied, loaned, exhibited, or used in any other way, except by written consent from PARSONS to the borrower.

CURVE DATA					
Δ	RADIUS	LENGTH	TANGENT	REMARK	
1	38°30'03"	52'	34.94'	18.16'	EDGE OF PAD (EXIST)
2	51°29'57"	52'	46.74'	25.08'	EDGE OF PAD (EXIST)
3	90°00'00"	40'	62.83'	40.00'	
4	90°00'00"	25'	39.27'	25.00'	
5	90°00'00"	10'	15.71'	10.00'	
6	48°19'28"	75'	63.26'	33.65'	EDGE OF PAD (EXIST)
7	48°19'28"	62'	52.29'	27.81'	∅ ROAD
8	48°19'28"	50'	42.17'	22.73'	EDGE OF PAD (EXIST)
9	48°19'28"	63'	53.14'	28.26'	∅ ROAD
10	45°00'00"	110'	86.39'	45.26'	∅ ROAD
11	90°00'00"	20'	31.42'	20.00'	EDGE OF PAD
12	45°00'00"	20'	15.71'	8.28'	EDGE OF PAD
13	41°40'32"	40'	29.09'	15.22'	
14	138°19'28"	40'	96.57'	105.09'	
15	90°00'00"	5'	7.85'	5.00'	
16	90°00'00"	2'	3.14'	2.00'	
17	26°44'20"	100'	46.67'	23.77'	EDGE OF PAD
18	18°15'59"	50'	15.94'	8.04'	EDGE OF PAD (EXIST)
19	18°15'40"	64.33'	20.51'	10.34'	∅ ROAD
20	26°44'20"	110'	51.33'	26.14'	∅ ROAD
21	180°00'00"	30'	94.25'	-	
22	39°00'00"	100'	68.07'	35.41'	∅ OVERPASS
23	90°00'00"	100'	157.08'	100.00'	∅ OVERPASS
24	39°00'00"	90'	61.26'	31.87'	INSIDE EDGE OVERPASS
25	39°00'00"	70'	47.65'	24.79'	OUTSIDE EDGE OVERPASS
26	90°00'00"	90'	141.37'	90.00'	INSIDE EDGE OVERPASS
27	90°00'00"	70'	109.96'	70.00'	OUTSIDE EDGE OVERPASS
28	35°09'14"	40'	24.54'	12.67'	
29	105°50'48"	25'	46.18'	33.08'	
30	174°00'06"	4'	12.15'	-	
31	24°55'02"	120'	52.19'	26.51'	
32	42°34'55"	25'	18.58'	9.74'	
33	180°00'00"	6'	18.85'	-	
34	117°20'08"	5'	10.24'	8.21'	
35	45°00'00"	25'	19.64'	10.36'	
36	41°40'32"	65'	47.28'	24.74'	
37	90°00'00"	35'	54.98'	35.00'	

COORDINATES			
VER	NORTH	EAST	REMARK
	410990.1636	1915712.5766	VERTEX (HORIZONTAL INTERSECTION BEAM TUBE CENTERLINES)
1	410884.9628	1916195.0154	PI EDGE OF PAD (EXIST)
2	410861.9569	1916164.4961	PI EDGE OF PAD (EXIST)
3	410870.9685	1916189.2481	∅ ROAD INTERSECTION
4	410877.6535	1916163.7780	∅ ROAD INTERSECTION
5	410887.4715	1916176.9055	∅ ROAD INTERSECTION
6	410660.2510	1915894.8000	PI EDGE OF PAD (EXIST)
7	410674.1544	1915891.6843	PI ∅ ROAD
8	410750.4475	1915452.7184	PI EDGE OF PAD (EXIST)
9	410764.7074	1915447.8560	PI ∅ ROAD
10	411376.9911	1915810.7953	PI ∅ ROAD
11	411327.9433	1915863.7117	PI EDGE OF PAD
12	411397.1283	1915956.2176	PI EDGE OF PAD
13	411467.7144	1915966.3985	PI EDGE OF PAD
14	411507.3455	1915936.7584	PI EDGE OF PAD
15	411537.0138	1915731.0468	PI EDGE OF PAD
16	411404.3866	1915711.9182	PI EDGE OF PAD
17	411438.7429	1915473.7112	PI EDGE OF PAD
18	411513.7640	1915366.3479	PI EDGE OF PAD (EXIST)
19	411503.3335	1915356.2497	PI ∅ ROAD
20	411426.7403	1915465.8629	PI ∅ ROAD
21	411354.4782	1915825.6459	∅ ROAD INTERSECTION
22	411366.0265	1915526.0024	PI ∅ ROAD
23	411252.5814	1915374.3189	PI ∅ ROAD
24	411092.4208	1915494.1049	PI ∅ ROAD
25	411483.8178	1915326.3078	PI EDGE OF PAD (EXIST)
26	411407.1550	1915223.8040	PI EDGE OF PAD (EXIST)
27	411134.8810	1915427.4380	PI EDGE OF PAD (EXIST)
28	410958.8720	1915434.2010	PI EDGE OF PAD (EXIST)
29	410743.2600	1915145.9110	PI EDGE OF PAD (EXIST)
30	410640.7560	1915222.5730	PI EDGE OF PAD (EXIST)



NOTES:
 1. SEE SHEET WA-C-002 FOR GENERAL NOTES, LEGEND AND ABBREVIATIONS.



LIGO-D960241-02-0

DRAWING NO.	DESCRIPTION	NO.	DATE	BY	CHKD	ENGR	PROJ	DESCRIPTION
2	5/15/98	WRB	YB	ML	MDW			ISSUED FOR AS-BUILT
1	2-28-97	WRB	ML	JB	MDW			ADDED WALK/WALL OPENING, REVISED GRADING

FOR CONSTRUCTION
 DRAWN WRB 10/5/95
 CHECKED ML 7/9/96
 ENGINEER JB 7/9/96
 PROJ MDW 7/9/96

AS-BUILT DRAWINGS

PARSONS
 100 WEST WALNUT STREET
 PASADENA, CALIFORNIA

LIGO
 CALIFORNIA INSTITUTE OF TECHNOLOGY
 MASSACHUSETTS INSTITUTE OF TECHNOLOGY

LASER INTERFEROMETER
 GRAVITATIONAL-WAVE OBSERVATORY
 SITE NO. 1 - HANFORD, WASHINGTON

CIVIL
 CORNER STATION
 PLOT PLAN

SCALE: 1" = 50'
 CONTRACT NUMBER: PPI50969
 PROJECT NUMBER: 8094
WA-C-505